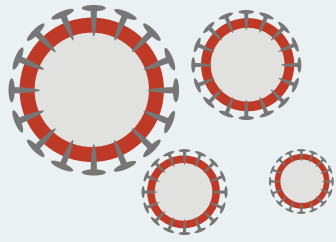


COVID-19 EMERGENCY CASH TRANSFERS

ECT



Progress towards achieving the **SDGs** has been undermined by the **COVID-19 pandemic**

PROGRAMME GOAL



Reduction of the social and economic impact of COVID-19 on poor and vulnerable households

COVID-19 EMERGENCY CASH TRANSFER PROGRAMME

Led by the Government of the Republic of Zambia. Supported by UNICEF, ILO, UNDP, WFP, Plan International, ChildFund and the Zambia Red Cross Society

CONTROL OF THE PANDEMIC IS THREATENED BY

Widespread **poverty**



Lack of **access to information**



Lack of means to adhere to **disease control measures**, such as **handwashing** and **social distancing**



Increased burden on families due to **extra expenditure on medication** and **hygiene** as well as **loss of earnings**



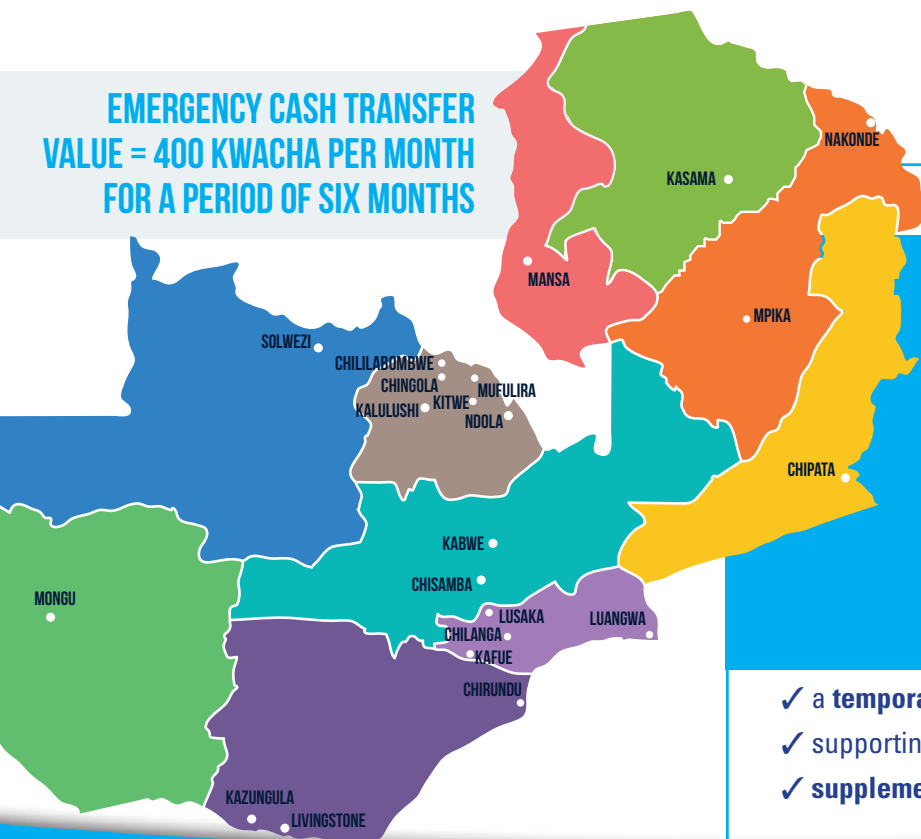
Multiple **overlapping deprivations**



Loss of income



**EMERGENCY CASH TRANSFER
VALUE = 400 KWACHA PER MONTH
FOR A PERIOD OF SIX MONTHS**



The COVID-19 ECT programme

Bi-monthly payments | **K800**

OR

Tri-monthly payments | **K1200**

OR

One off payment | **K2400**

DEPENDING ON THE DISTRICT

- ✓ a temporary emergency social assistance intervention
- ✓ supporting **204,000 vulnerable households** in 22 districts
- ✓ **supplementing** the regular Social Cash Transfer programme

Three shock-responsive social protection strategies:

1

VERTICAL EXPANSION:



Provide Emergency Cash to households already enrolled on the SCT programme to cope with the emergency

2

HORIZONTAL EXPANSION:



Additional beneficiaries for the duration of the emergency such as:

- Informal Economy Workers
- Orphans and vulnerable children
- Persons with disability or illness
- Households with a member of 65 years old and above
- Female headed households with at least two children

3

ALIGNMENT:



Link the C-ECT to other parts of the overall COVID-19 response, such as:

- Hygiene promotion
- Nutrition
- Protection
- Public health
- Disability inclusion

For more information, please contact:

Director, Social Welfare
Kennedy Mumba • Kennedy.Mumba@mcdsw.gov.zm
Principal Information Education and Communications Officer
Weka Banda • Weka.Banda@mcdsw.gov.zm

Or write to:

Ministry of Community Development and Social Services,
Private Bag W252 Community House, Sadzu Road, LUSAKA

The programme is financially supported by ChildFund International, EU Humanitarian Aid, the European Union, the Federal Republic of Germany through KFW, the International Federation of the Red Cross/Red Crescent movement, Ireland, the Swedish International Development Cooperation Agency, the United Kingdom of Great Britain and Northern Ireland.