

<b>Step 1</b>	<b>Proper Registration to Turkish Database:</b> All your household members are required to hold an identity card number starting with «99» issued by the Presidency of Migration Management with their address and other details updated.
<b>Step 2</b>	<b>Visit to SASFs or Türk Kızılay Service Centers:</b> One of the members in your family above 18 years old should apply for CCTE at <b>Social Assistance and Solidarity Foundation</b> or Türk Kızılay Service Center in the district where you are registered.
<b>Step 3</b>	<b>Application to the CCTE Programme:</b> Give the PMM ID cards of all your family members to the officials at the SASF or Türk Kızılay SC. Fill in correctly the application form and submit it to the SASF or Türk Kızılay SC officials.
<b>Step 4</b>	<b>Informed Consent Document:</b> In order for your data to be inquired by the system automatically, all the members of your family above the age of 18 and residing at the same address as you should sign the «Informed Consent Document.»
<b>Step 5</b>	<b>Eligibility Assessment:</b> Local Board of Trustees will give the decision for the application as soon as possible depending on the workload. Meanwhile, visits by SASF workers to your house may take place in order to verify the information in your application from.
<b>Step 6</b>	<b>Announcement Assessment:</b> Applicants will be notified through SMS messages to be sent to their mobile number registered in the system or informed by SASF usually within 3 months from application.
<b>Step 7</b>	<b>Regular Attendance to School:</b> Being assessed as eligible is not sufficient for regular payment: <b>If you want to receive payment regularly, your child should not miss school more than 4 days in a month, unexcused.</b>
<b>Step 8</b>	<b>Issuing of KIZILAYKART:</b> Beneficiaries will be issued a <b>KIZILAYKART</b> and receive an SMS informing which Halkbank branch or Türk Kızılay Service Center they can collect their card from.
<b>Step 9</b>	<b>Payment:</b> Cash will be sent to your <b>KIZILAYKART</b> every two months ( <b>usually January, March, May, July, September and November</b> ) as long as your family remain eligible for the program and your child goes to school regularly.



Funded by European Union Humanitarian Aid

## EXTENSION OF CONDITIONAL CASH TRANSFER FOR EDUCATION (CCTE) PROGRAMME TO SYRIANS AND OTHER REFUGEES

The CCTE Programme is a national social programme implemented by the Republic of Türkiye Ministry of Family and Social Services since 2003. Foreigners residing in Türkiye (*Syrian families under temporary protection or other refugees*), who are assessed as eligible can also benefit from the CCTE support for every month that their child attends school regularly.

**Ali**

Ali is a primary school boy. If Ali attends school regularly, the support will be **55 TL per one month.** (From kindergarten to 8th Grade)

**Amira**

Amira is a primary school girl. If Amira attends school regularly, the support will be **60 TL per one month.** (From kindergarten to 8th Grade)

**Fathi**

Fathi is a high school boy. If Fathi attends school regularly, the support will be **70 TL per one month.** (9th - 12th Grades)

**Fatma**

Fatma is a high school girl. If Fatma attends school regularly, the support will be **90 TL per one month.** (9th - 12th Grades)

**Families receive cash every two months as their children attend school regularly.**

### 1. WHO IS ELIGIBLE FOR THE CCTE PROGRAMME?

Application is open to all families regardless of their nationality. The eligibility criteria are the same for every applicant.

- 1- All members of the family must be registered in Türkiye,
- 2- The family must not have any regular income at the time of application including no high value or income generating assets,
- 3- No member of the family must have social security, and
- 4- The family must have at least one school-going child at the time of application.



The extension of the CCTE program to Syrians and other refugees is made possible through financial support from EU Humanitarian Aid, the Bureau of Population, Refugees, and Migration (PRM) of the US State Department and the Government of Norway.

## 2. HOW CAN I BECOME A BENEFICIARY OF THE CCTE PROGRAMME?

Prior to making the application for the CCTE Programme, foreigners not already registered in Türkiye must first do the following:

- 1- Each household member must hold an identity card starting with 99 issued by the Provincial Directorate of Migration Management (PDMM),
- 2- Minimum one child from the household must be enrolled in a public school or Accelerated Learning Programme (ALP),
- 3- Address and all other details must be updated.

One of your family members should then go to the Social Assistance and Solidarity Foundation (SASF) or a Türk Kızılay Service Center (SC) in the area where you are registered. He or she should be above 18 years old.

### Once at the SASF or Türk Kızılay Service Center

- ✓ Please present the Presidency of Migration Management (PMM) ID cards of all your family members to the officials;
- ✓ Fill in correctly the application form and submit it to the SASF of Türk Kızılay SC officials;
- ✓ Usually the mother of the child / children will be defined as the primary cardholder for the CCTE Programme. However, for Syrians and other refugees applying / benefiting from the ESSN Programme as well as the CCTE Programme, a common primary cardholder will be defined for both programmes. This may be the mother, father or another adult in the household;
- ✓ Please sign the documents presented.
- ✓ Result of the application will be shared within 3 months.
- ✓ You will also be notified on the status of your application through SMS message to your mobile phone number registered in the system.

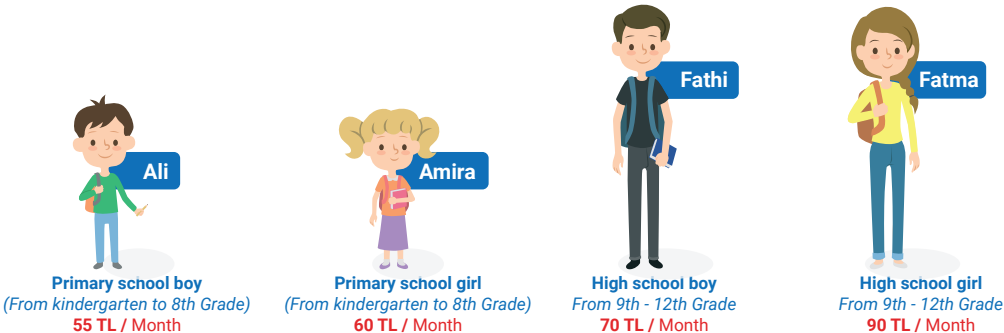
(Your number should be up-to-date to receive your application result. Phone numbers can only be updated via SASFs or Türk Kızılay SCs.)

## 3. MY APPLICATION FOR THE CCTE WAS SUCCESSFUL; NOW WHAT?

- ✓ KIZILAYKART from Halkbank will be issued in the name of the family member who applied for the programme.
- ✓ Please note that if you already hold a KIZILAYKART, you will continue using the same card.
- ✓ You will be notified about all the processes through SMS messages to your mobile number registered in the system.

## 4. HOW MUCH CASH WILL I RECEIVE AND WITH WHAT FREQUENCY?

- ✓ Payments in the CCTE are made per school-going child per school month.
- ✓ The cash will be transferred to your KIZILAYKART.
- ✓ The transfer will be done once every two months (usually in January, March, May, July, September and November) as long as you remain eligible for the CCTE and your child keeps attending school regularly.
- ✓ The amount of cash you will receive in any payment period depends on the gender and the classes of the school-going children in the family:

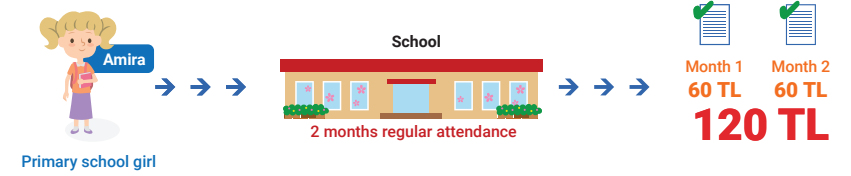


- ✓ The amount of cash received in a certain payment period depends on the school attendance of the child in preceding months. This means, the payments will only be made for months in which she or he attends school regularly.

For example, meet AMIRA, she is a girl attending 3<sup>rd</sup> grade in Primary School.

### Scenario 1:

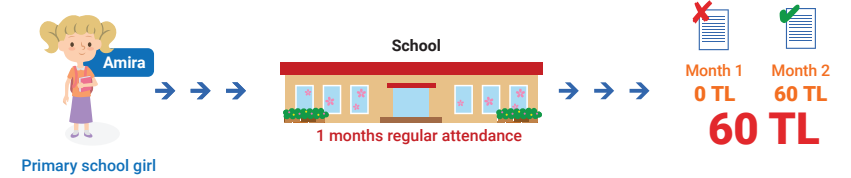
When Amira has attended school regularly in both of the 2 previous months assessed:



The family will get 120 TL in that payment period: 2 months X 60 TL = 120 TL

### Scenario 2:

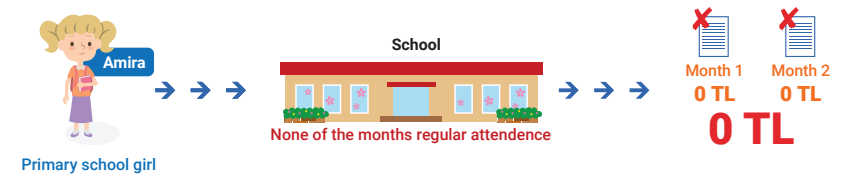
When Amira has attended school regularly in 1 of the 2 previous months assessed:



The family will get 60 TL in that payment period: 1 months X 60 TL = 60 TL

### Scenario 3:

When Amira has attended school regularly in neither of the 2 previous months assessed:



The family will get 0 TL in that payment period: 0 months X 60 TL = 0 TL

In addition to these monthly amounts, you might get extra support at the beginning of each school term.

As the above scenarios show: You will continue receiving regular CCTE payments if your child attends school regularly every month.

Please remember your child should not miss school more than 4 days in one month.