

## Humanitarian Needs Overview Findings



**15.6 million**  
People in need



**7.2 million**  
Children in need



**2.5 million**  
People with disabilities



**97%** of locations are in severe, extreme or catastrophic severity scale



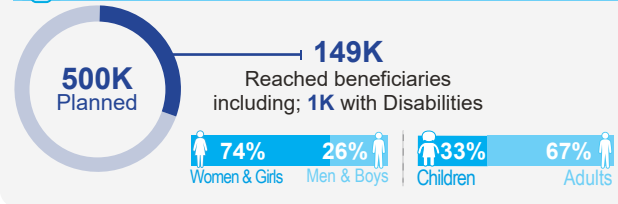
**100%** of PIN live in severe, extreme or catastrophic severity scale



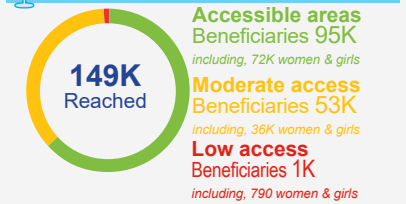
**10.3 million**  
People living in vulnerable residents

## Beneficiaries Reached Analysis & Funding Status

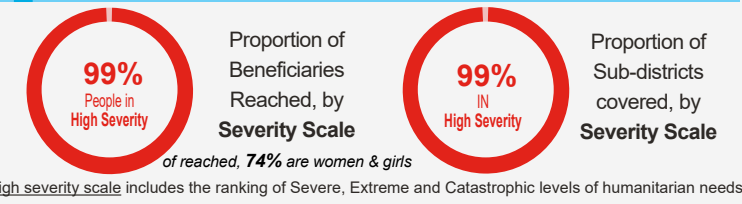
### Beneficiaries versus Planned Target



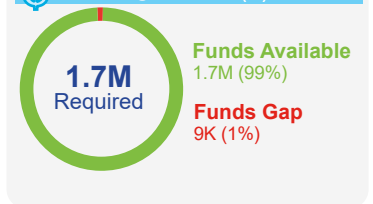
### Beneficiaries, by Access Quality



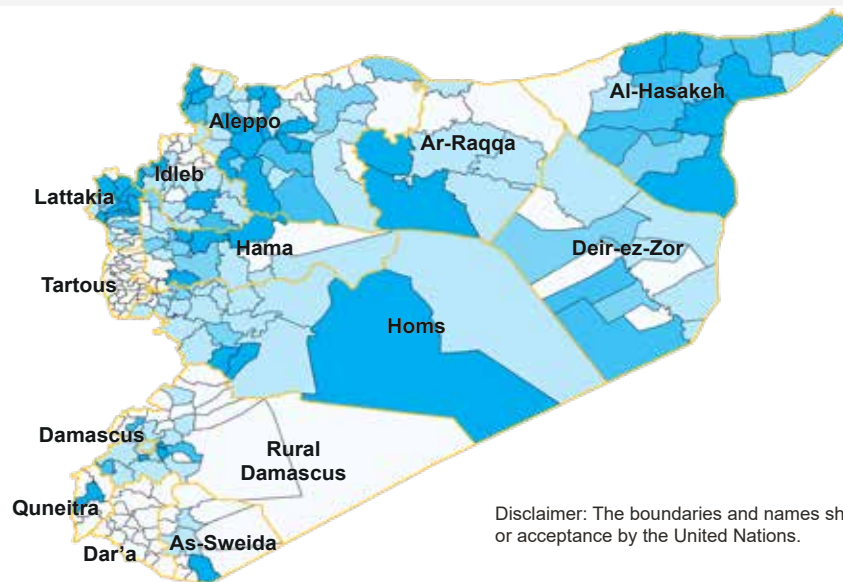
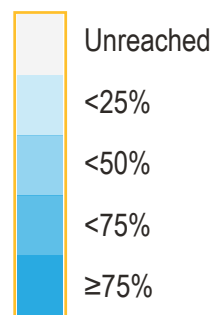
### SBC Reach and Coverage, by Severity Scale



### Funding Status (\$)



## PROPORTION OF PLANNED BENEFICIARIES REACHED BY SUB-DISTRICT



### Geographical Coverage

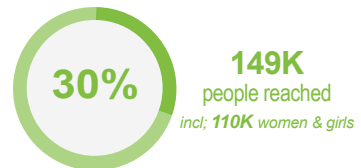
- 12 Governorates reached; out of 14
- 159 Sub districts reached; out of 270
- 823 Locations reached; out of 8,364

Disclaimer: The boundaries and names shown, and designations used, on this map do not imply official endorsement or acceptance by the United Nations.

**ACHIEVED RESULTS,** by indicators

**REACHED**

**TARGET**



**500K** *\*incl; 350K women & girls* People engaged in reflective dialogue through community platforms