

2026 Humanitarian Needs Overview Findings



15.6 million
People in need



7.2 million
Children in need



2.5 million
People with disabilities



5.55 million
Internally displaced people



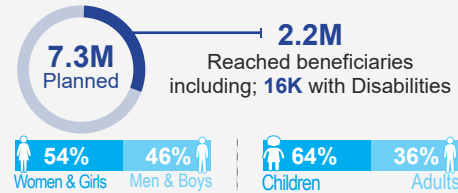
10.3 million
People living in vulnerable residents



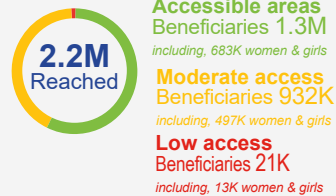
97% of locations are in severe, extreme or catastrophic severity scale

Beneficiaries Reached Analysis & Funding Status

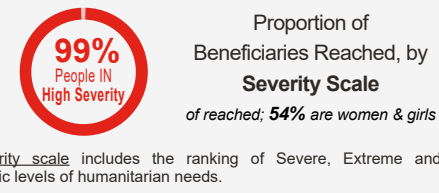
Beneficiaries versus Planned Target



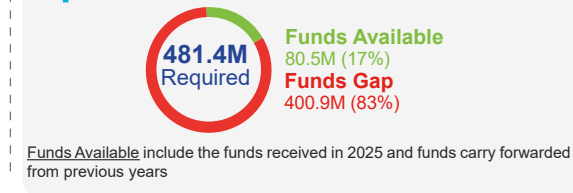
Beneficiaries, by Access Quality



Beneficiaries, by Severity Scale



Funding Status (\$)



By programme, proportion of people in need reached versus planned targets

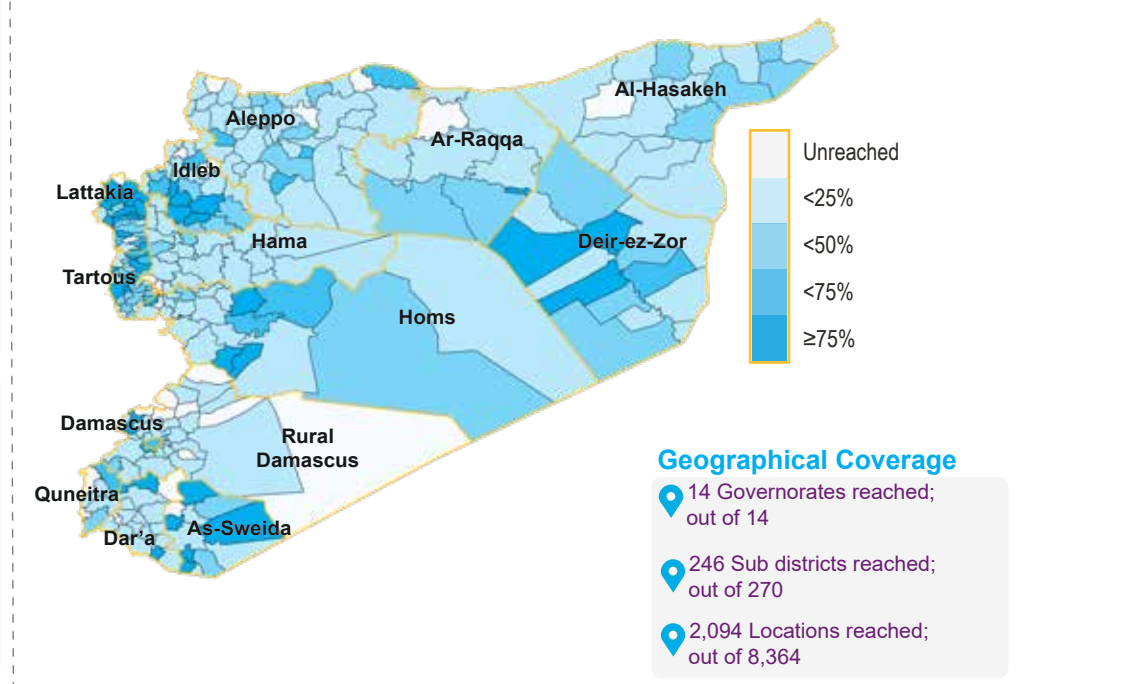
Programme	Proportion Reached	Target
Health	10%	4.2M
Nutrition	6%	3M
WASH	28%	4.5M
Education	13%	3M
Child Protection	13%	900K
Adolescent Development	9%	300K
Social Protection	19%	150K

Highlights

- 2.2M beneficiaries reached in 3 months of 2026, including 1.4M children and 453K women.
- 953K people reached in most severely affected and moderate to access areas which represents 43% of reached people in need of humanitarian assistance.
- The overall progress reach is On-Track with targets to be reached as planned by end of the year.

Reference:
 - 2026 Syria Humanitarian Needs Overview
 - 2026 Syria Humanitarian Action for Children

PROPORTION OF PLANNED BENEFICIARIES REACHED BY SUB-DISTRICT



Disclaimer: The boundaries and names shown, and designations used, on this map do not imply official endorsement or acceptance by the United Nations.