

Humanitarian Needs Overview Findings



15.3 million
People in need



4.4 million
Adolescents in need



2.6 million
People with disabilities



97% of locations are in severe, extreme or catastrophic severity scale



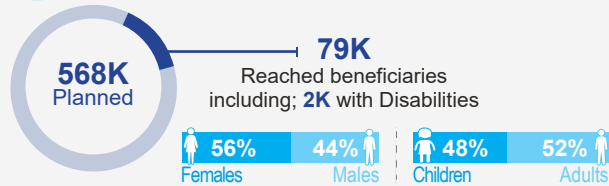
99% of People live in severe, extreme or catastrophic severity scale



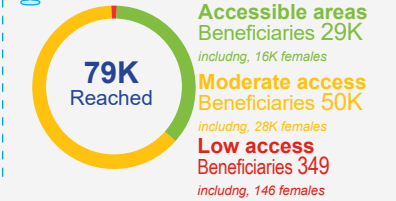
2.05 million
People living in IDP camps

Beneficiaries Reached Analysis & Funding Status

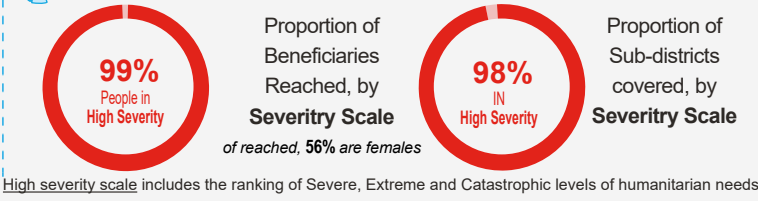
Beneficiaries versus Planned Target



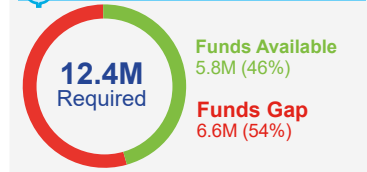
Beneficiaries, by Access Quality



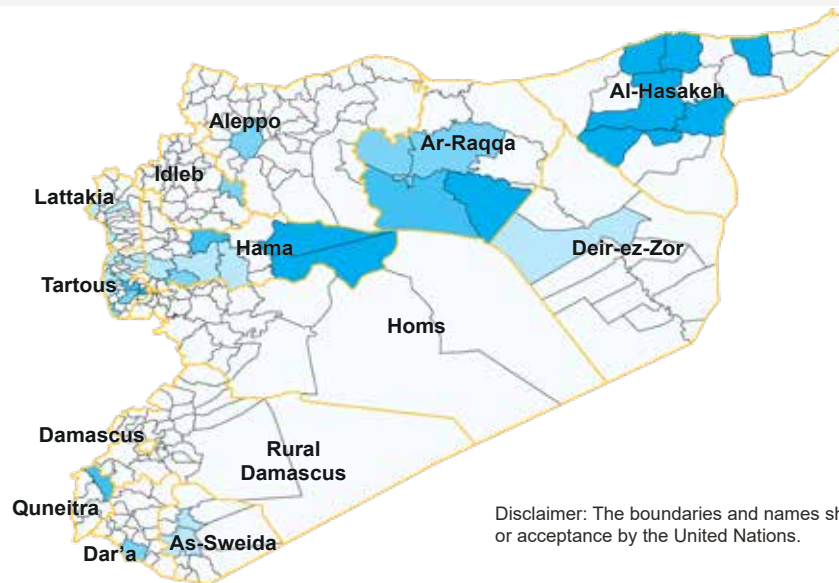
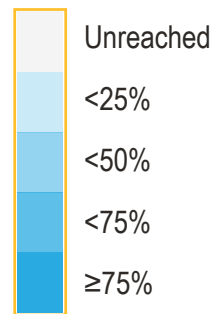
ADAP Reach and Coverage, by Severity Scale



Funding Status (\$)



PROPORTION OF PLANNED BENEFICIARIES REACHED BY SUB-DISTRICT



Geographical Coverage

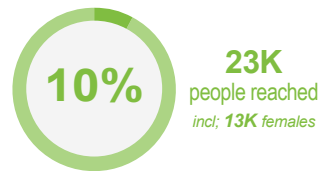
- 12 Governorates reached; out of 14
- 40 Sub districts reached; out of 270
- 68 Locations reached; out of 8,100

Disclaimer: The boundaries and names shown, and designations used, on this map do not imply official endorsement or acceptance by the United Nations.

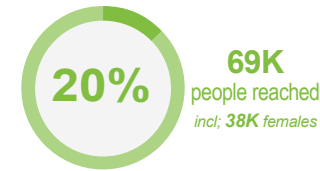
ACHIEVED RESULTS, by indicators

REACHED

TARGET



225K *incl; 113K females* Affected adolescents and youth aged 10 to 24 years receiving life-skills and citizenship education and employability skills



343K *incl; 173K females* Adolescents and youth aged 10 to 24 years promoting social cohesion and civic engagement at the community