

Ongoing conflict and increasing mass displacements in South Sudan

April 2026

Abuk Nyanachie, a 26-year-old mother of one from Northern Jonglei, traveled to Awerial after being displaced due to recent fighting in Jonglei. She is now in Marik IDP camp for safety.

© UNICEF/South Sudan/Lou Nelson

The Situation

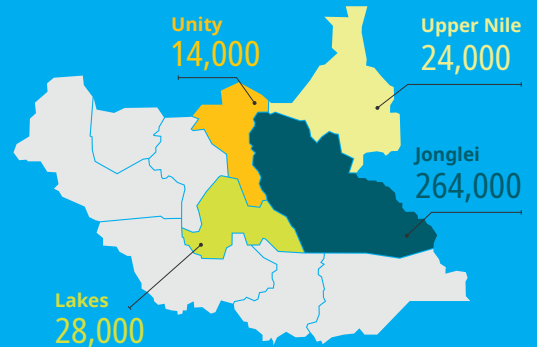
As of March 2026, conflict continues to escalate in South Sudan, particularly in Jonglei State, driving a rapidly deteriorating humanitarian situation. More than 330,000 people have been displaced by ongoing fighting and airstrikes, the vast majority of them women and children. Displacement is increasingly spilling into neighbouring Lakes and Upper Nile states, placing overwhelming pressure on already fragile communities and overstretched basic services, with some areas at risk of reaching a breaking point.

At the same time, UNICEF's humanitarian response over the next six months remains critically underfunded, directly constraining the scale and speed of life-saving assistance. As a result, the most vulnerable children are being left without access to essential health care, nutrition, safe water, and protection services.

Without an urgent scale-up, already fragile service systems risk collapse, leaving hundreds of thousands of children without life-saving support. With the rainy season approaching, access will become increasingly limited, and the window to prevent a deeper humanitarian crisis is rapidly closing.

Population movement since December 2025

Total IDPs



Source: IOM

Impact on Children and Women

43 UNICEF-supported facilities were looted or destroyed in January and February 2026, including **28 health facilities in Jonglei alone, disrupting services for over 132,000 people** and severely limiting access to basic healthcare for displaced populations and host communities.

The acute malnutrition of 24.3 per cent—well above emergency thresholds—has been recorded in Duk and Twic East. In hard-to-reach areas such as Pading, Pathai, Pieri, and Yuai, the collapse of basic services has left women and children without access to healthcare, safe water, sanitation, or protection support.

The risk of rapid cholera spread is increasing due to displacement and poor water, sanitation, and hygiene conditions. Cases continue to rise in Ayod, Duk, Uror, and Panyijar, contributing to a growing outbreak. **From January to mid-April 2026, the most severely affected counties—Uror, Awerial, and Ayod—recorded case fatality rates of 15.4%, 7.7%, and 4%, respectively,** likely driven by insecurity, disrupted health services, and looting of facilities.

Grave violations against children have sharply increased since 2022, with 2025–2026 data indicating a return to civil war-level harm. Many incidents remain unreported, pointing to a severe and underrecognized protection crisis.



No Safe Water



Lack of Sanitation



No Healthcare & Protection



104,122
Cholera cases

(South Sudan cholera data since 2024 as of 19 April 2026)



1,668
Deaths reported



24.3%
Global Acute Malnutrition
in Duk and Twic East



Severe Hunger & Inaccessible areas
Such as Pading, Pathai, Pieri, and Yuai.



43
UNICEF supported health facilities were looted or destroyed



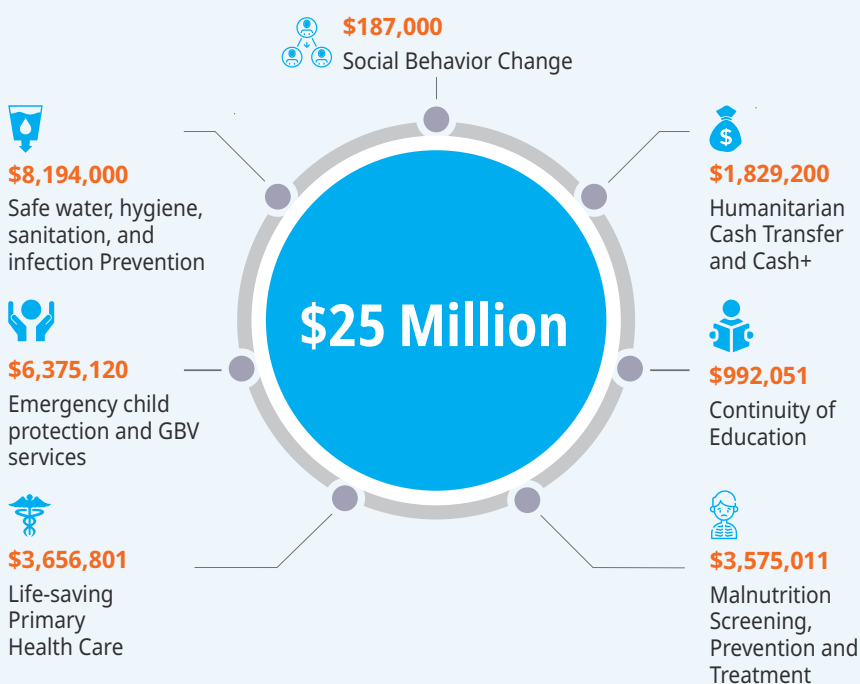
2025–2026
Grave violations against children
data trending towards civil-war levels of abuse

UNICEF Response Strategy

UNICEF's 6-month emergency response is delivering urgent humanitarian assistance in Jonglei, Upper Nile, and Unity States, addressing the needs of displaced populations and host communities while strengthening protection-focused interventions. UNICEF is reaching affected communities through established field locations, outreach to surrounding areas, and rapid response missions for populations in the most insecure and hard-to-reach locations.

To ensure an immediate scale-up of life-saving assistance, **UNICEF has mobilized internal resources through an emergency loan mechanism** to front load the response in the most affected areas. However, **without additional funding, this scale-up cannot be sustained at the level required.**

Immediate Funding requirements



UNICEF's response will aim to reach

200,000 – 250,000

people of which

51% are **children**



With donor support, UNICEF can provide

- 85 USD** → Emergency WASH kit for one household (buckets, water treatment, soap, filter cloth, MHM kit).
- 200 USD** → 8 weeks of treatment for one child with severe acute malnutrition (outpatient program).
- 5,000 USD** → Rehabilitate a handpump for 500 people.
- 15,000 USD** → Vitamin A and deworming tablets for 21,425 children.
- 20,000 USD** → Teaching and learning materials for 3,000 students (solar radios, school-in-a-box).
- 48,000 USD** → Emergency Child Protection & GBV case management for 480 children and women (family tracing, reunification, monitoring).
- 85,000 USD** → Drill a solarized borehole with 6-tap mini water yard to reduce queues and GBV risks, serving 3,000 people.



On 27 March 2026, in Marik IDP Camp in Awerial County, South Sudan, displaced families—mainly women and children—are sheltering after fleeing recent conflict and bombardments in northern Jonglei State. Most arrived from Twic East and Duk, crossing the River Nile on local boats.

Marik is one of nine IDP camps in Awerial County, which, together with surrounding host communities, currently hosts around 29,000 displaced people.

© UNICEF/South Sudan/Lou Nelson

Christopher Konig
Donor Relations Specialist
UNICEF South Sudan
koenig@unicef.org

Angela Travis
Communication Chief
UNICEF South Sudan
atavis@unicef.org

unicef 
for every child