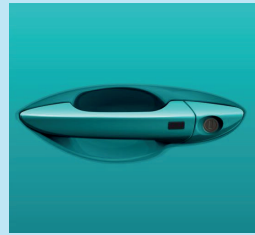


CORONAVIRUS

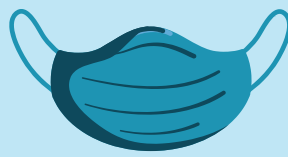
GOLDEN RULES FOR SCHOLAR TRANSPORT



Transport must be sanitised at least twice a day



Door handles, windows armrests sanitised after every load



The driver and all learners must wear a mask at all times

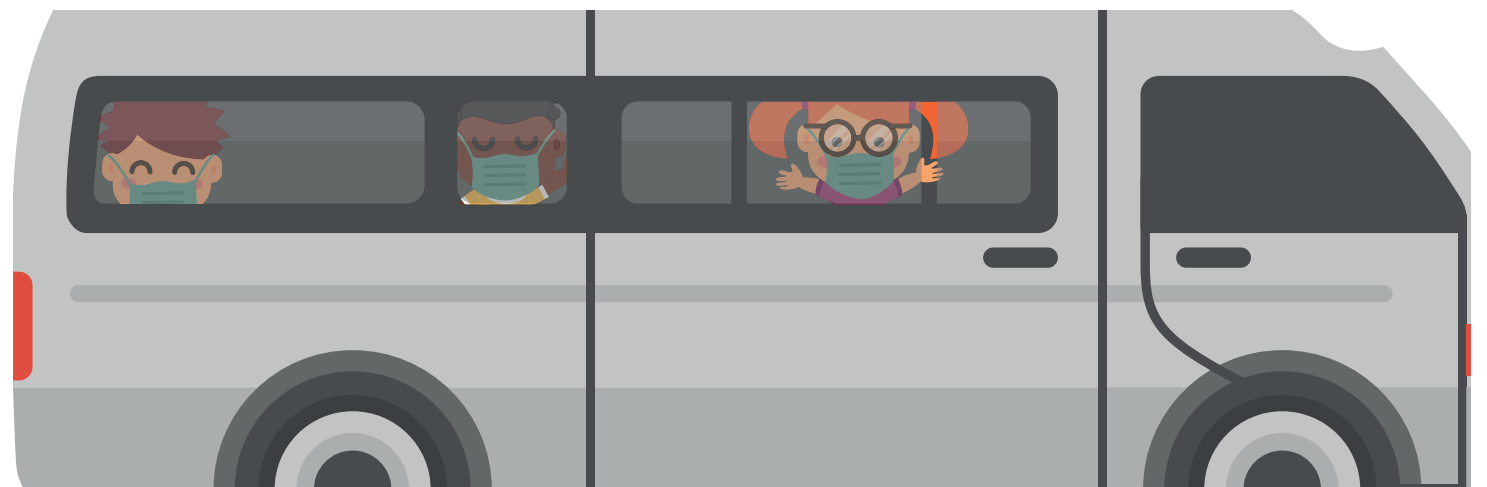


No sharing of stationery amongst learners or teachers



No sharing of food or eating utensils

Scholar transport must comply with the directions issued by the Department of Transport



All learners and drivers must sanitise their hands before getting into the transport



The driver's temperature is checked in the morning and afternoon