

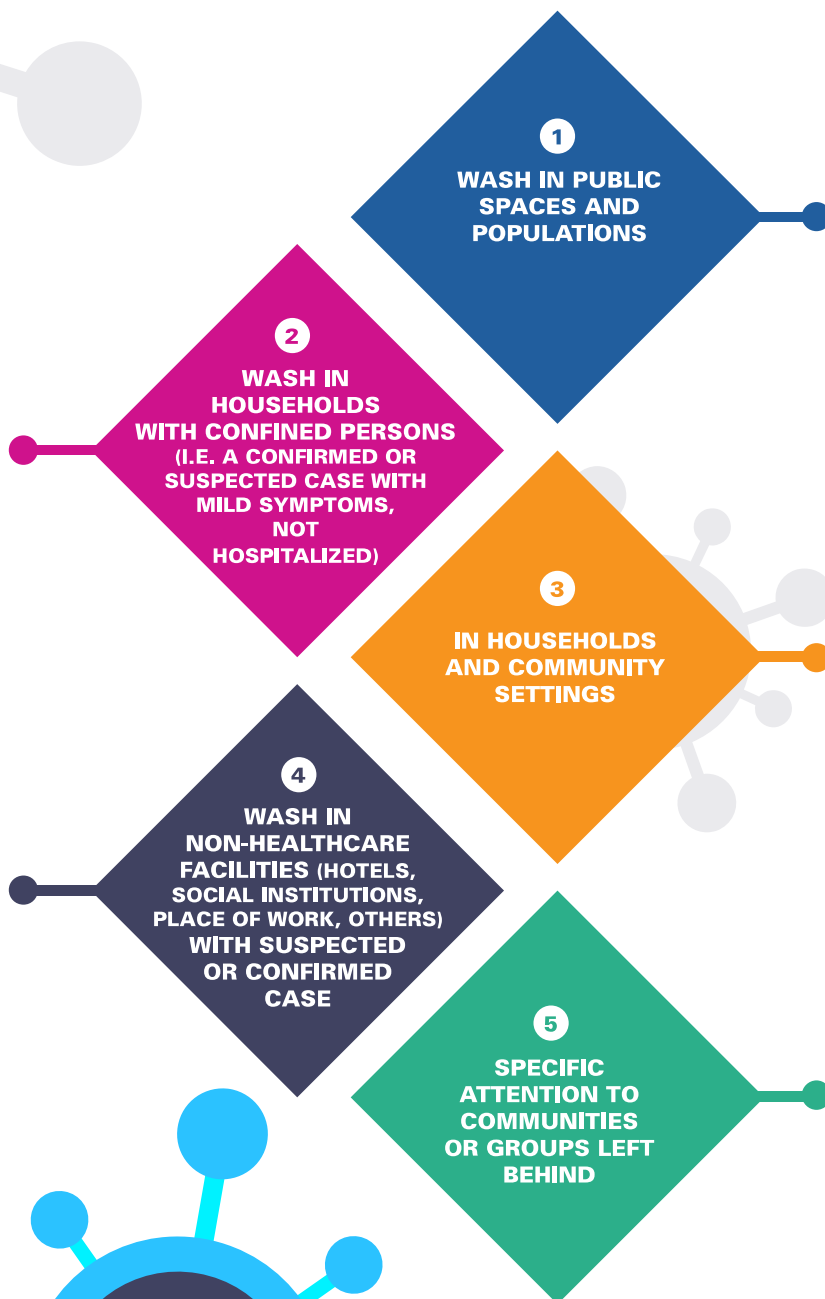
COVID-19

GN3

Measures in Households and Public spaces

- Ensure continuous water supply in adequate quantities for personal hygiene and cleaning
- Ensure dedicated handwashing and sanitation facilities
- Ensure basic hygiene materials, by direct in-kind support to households or through the Ministry of Health/ community organisations. An IPC kit should include: soap or hand sanitizer, commercial detergent and chlorine-based products, gloves, mop and bucket or basin; in areas where there is no running tap water, a bucket with a tap can be added for use as a home hand washing facility.
- Regular cleaning of often-touched surfaces in the household
- In collaboration with UNICEF's C4D, ensure households have guidance on how to use the materials to break COVID-19 transmission routes

- Continuous access to water, ensuring equal access to all
 - Ensuring access to dedicated handwashing and sanitation facilities
- Ensuring the use of dedicated sanitation facilities for suspected cases
- Ensuring the availability and use of hygiene and cleaning materials
- Regular cleaning of often-touched surfaces in public spaces



- Ensure that water is available at all times in public places where the risk of transmission of COVID -19 is likely to be highest. Ensure taps are regularly disinfected
- All water used within communities should have a residual concentration of free chlorine of ≥ 0.5 mg/l after at least 30 min contact time; storage containers must be regularly cleaned
- Hand hygiene facilities including products (water, soap, or hand sanitizers, sinks or bucket with tap) should be in place and easily accessible in all community settings
- Hand hygiene must be performed after touching surfaces; touching doors handles; going to the bathroom; before eating; and after blowing your nose, coughing, or sneezing
- Promotion of cough and sneeze etiquette
- For marketplaces, places of worship, social institutions, prisons, regular hand washing with soap and water is necessary to avoid infection and transmitting it
- Regular cleaning of often-touched surfaces in public spaces with commercial chlorine-based products or chlorine bleach solution
- Train community members on why, when and how to wash hands frequently

- Adequate WASH measures should achieve two main objectives
 - The exposure to the disease is reduced in vulnerable community settings and public spaces: the main targeted intervention is availability of hand washing facilities, together with continuous availability of water for hygiene and cleaning purposes
 - The transmission of the disease is reduced in home and community settings: personal and interpersonal hygiene practices, cleaning and simple disinfection should be intensified
- Determine community settings and public spaces most likely to be exposed to the disease
- Train Community Health Workers and local Volunteers
- Support or reinforce existing WASH monitoring systems

- Improve sanitary conditions of
 - Residences for elderly, disabled persons, homeless people, and orphanages
 - Refugees or migrants camps, IDPs settings both formal and informal
- Ensure the prevention of sexual abuse and harassment