



**NUTRITION WING**  
Ministry of National Health Services,  
Regulations and Coordination  
Government of Pakistan

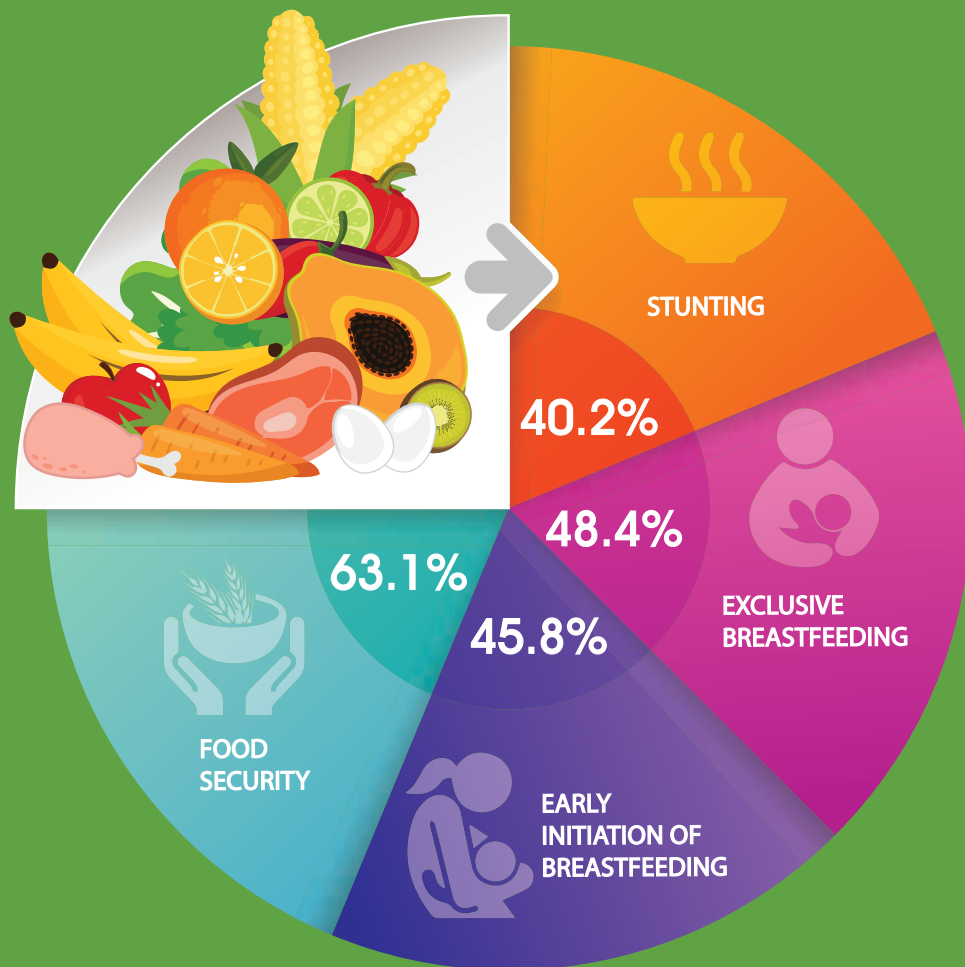
# NATIONAL NUTRITION SURVEY 2018

## KEY FINDINGS REPORT





# TOPLINE RESULTS



Permission is required to reproduce any part of this publication. Please contact UNICEF Pakistan, Nutrition Section

All Rights Reserved: UNICEF Pakistan

Photographs: UNICEF Pakistan

Designed by Human Design Studios

## Introduction

The 2018 Pakistan National Nutrition Survey (NNS 2018), the largest national nutrition survey, in Pakistan. It is designed to provide to policymakers, programme managers and academicians a unique set of nutrition-related data including environmental, anthropometric and biochemical indicators. The study group included children, women of reproductive age (WRA) and adolescent boys and girls. NNS 2018 is the fifth national nutrition survey since 1965, but the first to yield district-representative data and to include adolescents and a component on water.

NNS 2018 employed a cross-sectional survey design at the household level. It used a mixed-method data collection methodology with both quantitative and qualitative approaches.

The sample design provides district level estimation at the national level for urban and rural localities and by gender, for the four provinces (Punjab, Sindh, Balochistan and Khyber Pakhtunkhwa, KP); and for the regions (Azad Jammu and Kashmir, AJK, and Gilgit-Baltistan, GB), KP-NMD and Islamabad Capital Territory (ICT).

A national, province and district representative sample of 76,742 children (aged 0–59 months), 145,847 adolescents (10–19 years) and 145,324 WRA (15–45 years) was selected from 115,600 households.





# Household Sampled

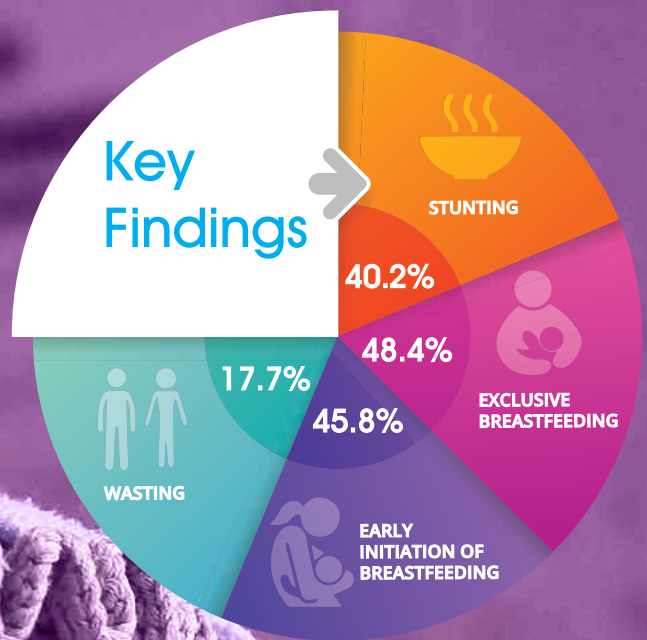
	Households					Women (15-49 years)			Adolescent (10-19 years)		Children under 5		
	Sampled	Occupied	Interviewed	Household response rate	Eligible	Interviewed	Women's response rate	Eligible	Eligible	Eligible	Eligible	Mothers/ caretakers interviewed	Under-5's response rate
National	Total	110146	105704	100304	94.9	155614	123092	79.1	64829	81324	68493	84.2	
	Urban	33328	31908	29858	93.6	47155	37367	79.2	18314	22999	19641	85.4	
	Rural	76818	73796	70446	95.5	108459	85725	79.0	46515	58325	48852	83.8	
Punjab	Total	40452	38825	37086	95.5	55491	44409	80.0	20575	28139	24281	86.3	
	Urban	13312	12712	12016	94.5	18515	14644	79.1	6592	8893	7565	85.1	
	Rural	27140	26113	25070	96.0	36976	29765	80.5	13983	19246	16716	86.9	
Sindh	Total	18768	18149	17156	94.5	25895	20977	81.0	11664	14802	13082	88.4	
	Urban	10027	9702	9003	92.8	14068	11241	79.9	5823	7033	6233	88.6	
	Rural	8741	8447	8153	96.5	11827	9736	82.3	5841	7769	6849	88.2	
KP	Total	13710	13246	12222	92.3	20166	16110	79.9	9144	9736	8232	84.6	
	Urban	2803	2722	2464	90.5	4189	3316	79.2	1699	1952	1640	84.0	
	Rural	10907	10524	9758	92.7	15977	12794	80.1	7445	7784	6592	84.7	
Balochistan	Total	18145	17230	16315	94.7	24874	20302	81.6	10483	14165	11879	83.9	
	Urban	4011	3751	3495	93.2	5699	4625	81.2	2310	2938	2431	82.7	
	Rural	14134	13479	12820	95.1	19175	15677	81.8	8173	11227	9448	84.2	
ICT	Total	1356	1304	1205	92.4	1792	1473	82.2	657	965	826	85.6	
	Urban	659	632	582	92.1	817	654	80.0	281	482	405	84.0	
	Rural	697	672	623	92.7	975	819	84.0	376	483	421	87.2	
KP-TD	Total	3595	3559	3355	94.3	5229	3475	66.5	2319	2463	1707	69.3	
	Urban	199	197	188	95.4	324	201	62.0	112	114	72	63.2	
	Rural	3396	3362	3167	94.2	4905	3274	66.7	2207	2349	1635	69.6	
AJK	Total	8449	7910	7579	95.8	12039	9229	76.7	4750	5634	4614	81.9	
	Urban	1579	1484	1417	95.5	2246	1786	79.5	796	979	847	86.5	
	Rural	6870	6426	6162	95.9	9793	7443	76.0	3954	4655	3767	80.9	
GB	Total	5671	5481	5386	98.3	10128	7117	70.3	5237	5420	3872	71.4	
	Urban	738	708	693	97.9	1297	900	69.4	701	608	448	73.7	
	Rural	4933	4773	4693	98.3	8831	6217	70.4	4536	4812	3424	71.2	

For the biochemical assessment, 31,828 blood samples for WRA and 31,828 samples for children were planned to analyse. For water quality a sample size of 31,828 was estimated based on the prevalence of coliform and E. coli contamination of water.

## Planned Survey Sample

Province/ Region	PSUs	HHs	Blood Samples		Urine Samples		Water Samples
			WRA	Children	WRA	Children	
Balochistan	794	15,880	7,297	7,297	745	745	7,297
KP	807	16,140	5,096	5,096	807	807	5,096
KP-NMD	377	7,540	2,070	2,070	377	377	2,070
Punjab	2,051	41,020	7,704	7,704	2,051	2,051	7,704
Sindh	945	18,900	5,656	5,656	945	945	5,656
ICT	68	1,360	340	340	68	68	340
GB	328	6,560	2,640	2,640	190	190	2,640
AJK	410	8,200	1,025	1,025	597	597	1,025
<b>Grand Total</b>	<b>5,780</b>	<b>115,600</b>	<b>31,828</b>	<b>31,828</b>	<b>5,780</b>	<b>5,780</b>	<b>31,828</b>

# CHILDREN UNDER FIVE YEARS OF AGE



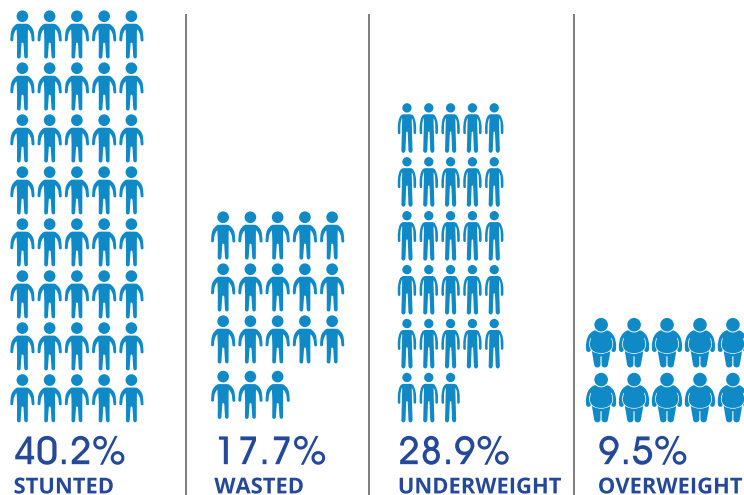
A total of 68,493 mothers/caretakers of children under five were interviewed. Of these, 24,209 children under two years were assessed for infant and young child feeding (IYCF) practices. Of these children, 50.9% were boys and 49.1% girls. About 36.4% lived in urban localities and 63.6% in rural areas. About 55.8% of the mothers of the sampled children were illiterate and 42.5% children belonged to the lowest two wealth quintiles.

## NUTRITIONAL STATUS OF CHILDREN UNDER FIVE YEARS OF AGE

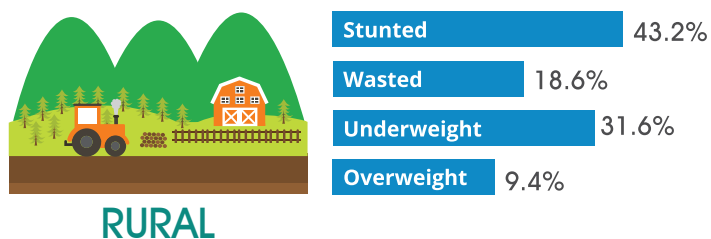
- STUNTING
- WASTING
- UNDERWEIGHT
- OVERWEIGHT

In Pakistan, four out of ten children under five years of age are stunted while 17.7% suffer from wasting. The double burden of malnutrition is becoming increasingly apparent, with almost one in three children underweight (28.9%) alongside a high prevalence of overweight (9.5%) in the same age group. The prevalence of overweight among children under five has almost doubled over seven years, increasing from 5% in 2011 to 9.5% in 2018.

### Prevalence of Malnutrition (Children Under Five)



### Prevalence of Malnutrition by Locality (Urban/Rural)

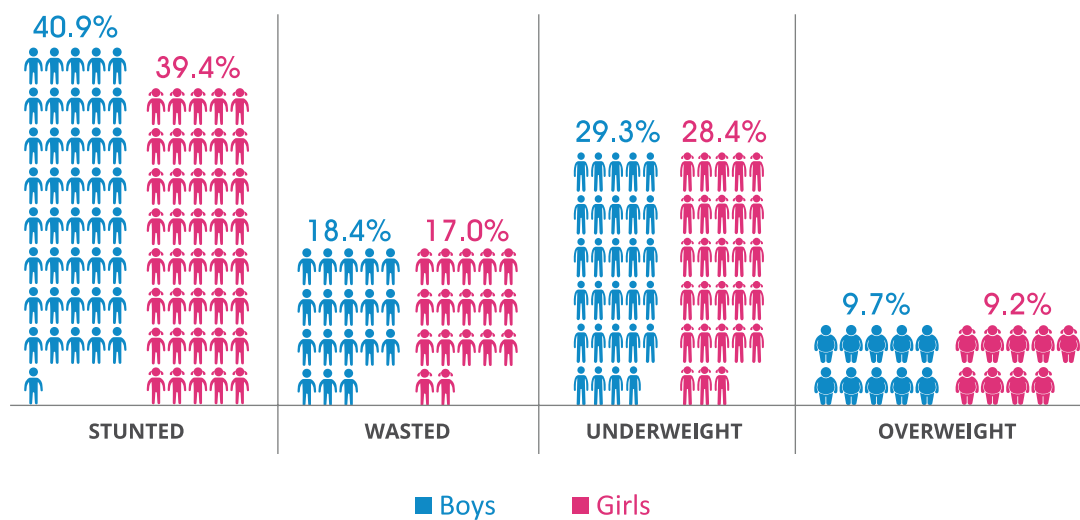






The pattern of distribution of malnutrition among boys and girls remains the same, with boys being more affected than girls by all forms of malnutrition. Children living in urban areas suffer more from undernutrition (wasting, stunting and wasting) than their peers in rural areas. Overweight affects children equally, irrespective of locality.

### Prevalence of Malnutrition by Gender



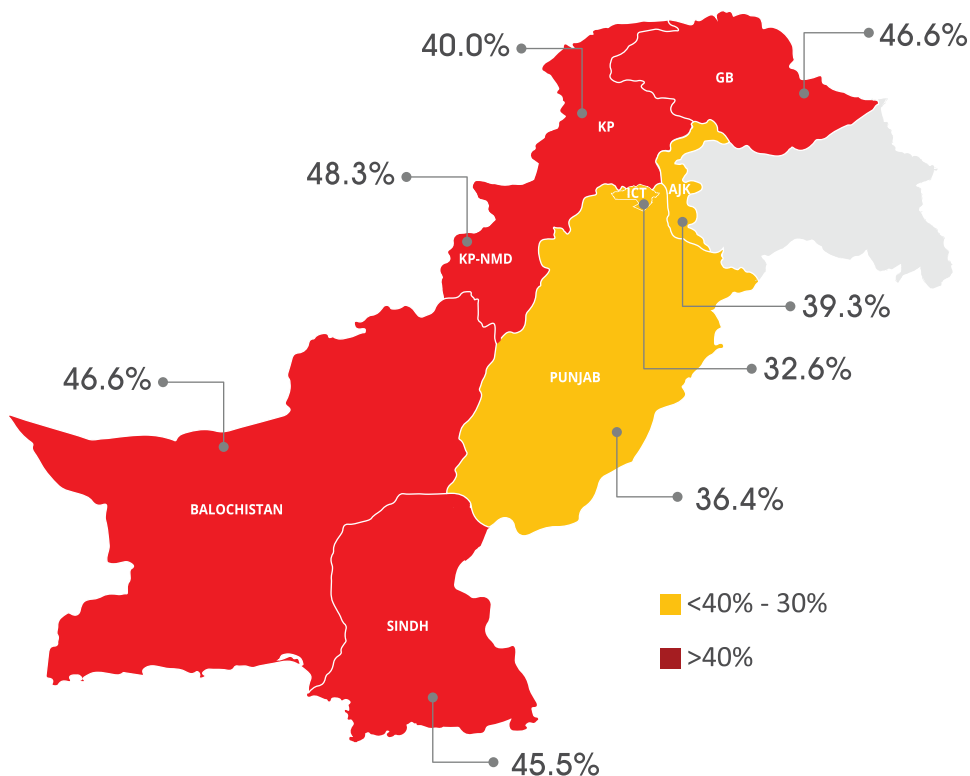


## STUNTING

Stunting is a major problem in Pakistan, with 12 million children with low height for age. To ensure that this form of malnutrition does not continue to compromise the human capital required to sustain the socioeconomic development of Pakistan, stunting reduction is a top national priority.

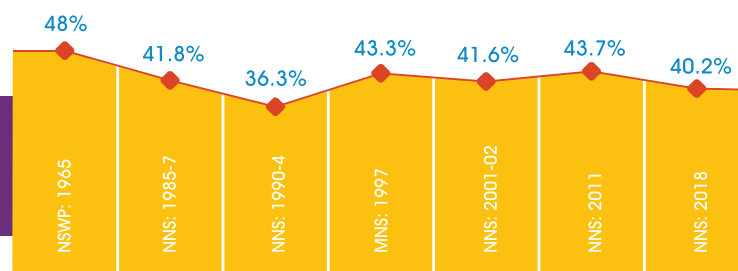
The national average (40.2%) masks provincial disparities. The prevalence of stunting varies from 32.6% in ICT to 48.3% in KP-NMD. The prevalence of stunting among young children in Sindh, Balochistan, KP-NMD and GB is higher than the national average.

### Prevalence of Stunting by Province/Region



The prevalence of stunting improved from 1965 (48%) to 1994 (36.3%) but deteriorated from 2001 (41.6%) to 2011 (43.7%). In 2018, at 40.2%, it remains at a global critical level. The average annual reduction rate is estimated at 0.5%, too slow to significantly reduce the stunting rate in Pakistan.

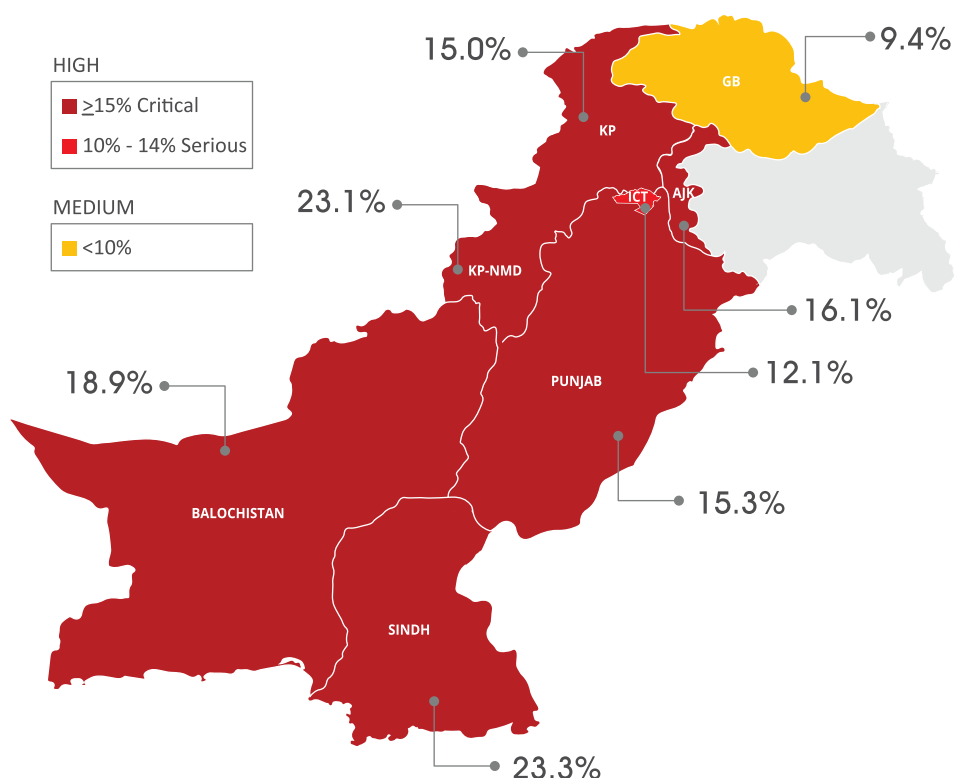
### Trends of Stunting in Pakistan



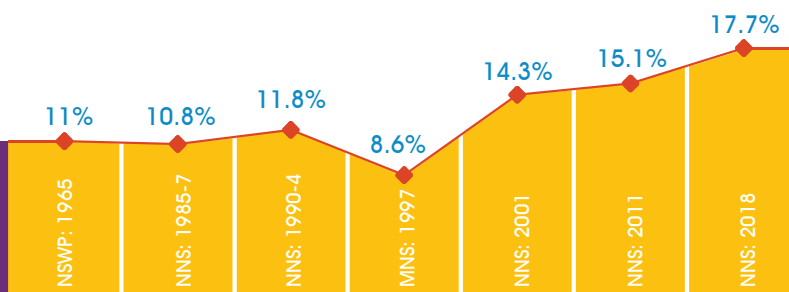
## WASTING

Since 1997, the prevalence of low weight for height among young children is on the rise, from 8.6% in 1997 to 15.1% in 2011 and 17.7% in 2018. Despite improvements in other socioeconomic indicators, acute malnutrition remains in a state of nutrition emergency. This is the highest rate of wasting in Pakistan's history.

### Prevalence of Wasting by Province/Region



### Trends of Wasting in Pakistan

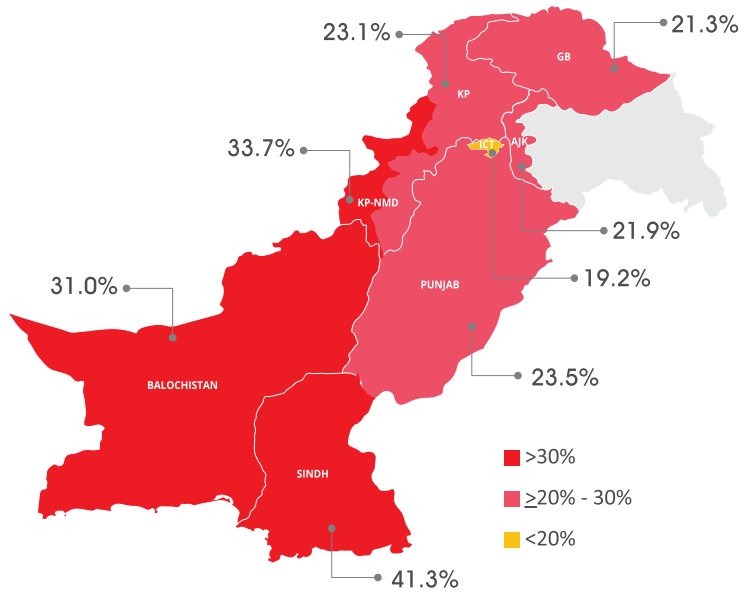


This form of malnutrition is most prevalent in Sindh (23.3%) and KP-NMD (23.1%), whereas GB and ICT have the lowest proportion of children with wasting, at 9.4% and 12.1% respectively. Sindh, Balochistan and KP-NMD have a higher prevalence of wasting than the national average. The prevalence of wasting among children under five in all provinces/regions excluding ICT and GB exceeds the emergency threshold (15%).

## UNDERWEIGHT

The prevalence of underweight among children under five years of age (i.e. weight for age below 2 z-score) is high in all provinces/regions, from 19.2% in ICT to 41.3% in Sindh. The prevalence of underweight is below 20% only in ICT.

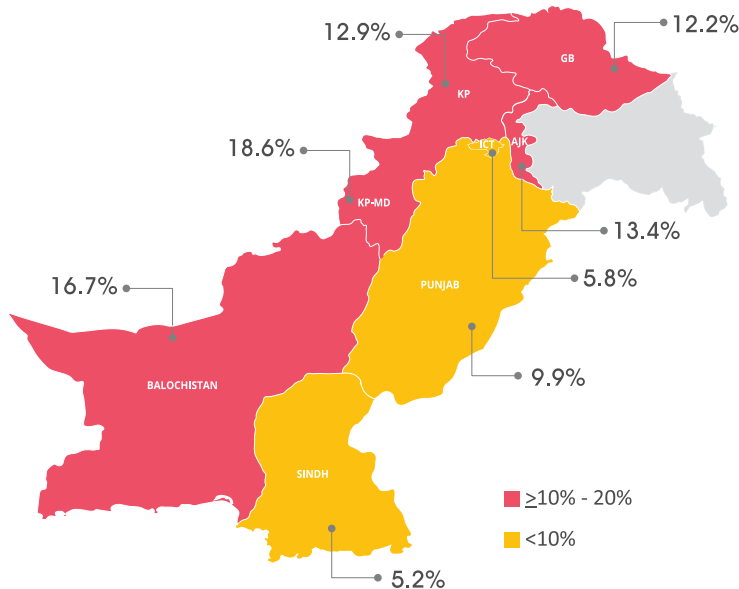
### Prevalence of Underweight by Province/Region



## OVERWEIGHT

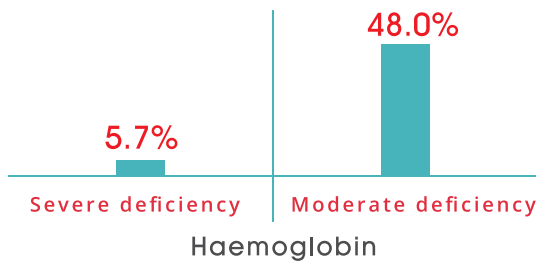
The study estimated the proportion of overweight children under five to be 9.5%, twice the target set by the World Health Assembly. Prevalence is highest in KP-NMD (18.7%) and Balochistan (16.7%), and lowest in Sindh (5.2%) and ICT (5.8%). The prevalence of overweight among young children exceeds 10% in KP, Balochistan, KP-NMD, AJK and GB.

### Prevalence of Overweight by Province/Region



# MICRONUTRIENT DEFICIENCIES IN CHILDREN UNDER FIVE YEARS OF AGE

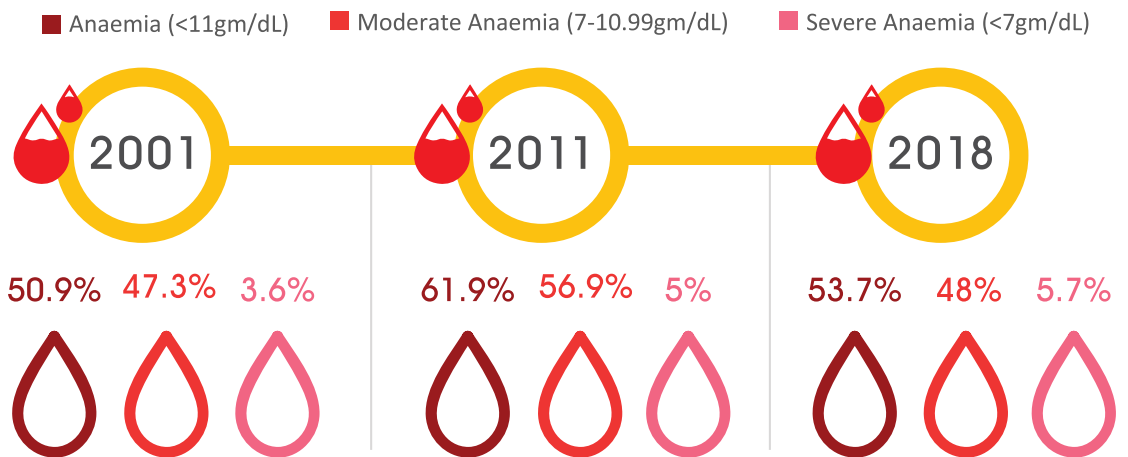
## Anaemia in Children Under Five



More than half (53.7%) of Pakistani children are anaemic and 5.7% are severely anaemic. The prevalence of anaemia is slightly higher (54.2%) amongst boys than girls (53.1%). Children in rural areas are more likely to be anaemic (56.5%) than in urban areas (48.9%). A similar pattern was observed for severe anaemia (rural: 5.9%; urban: 5.2%).

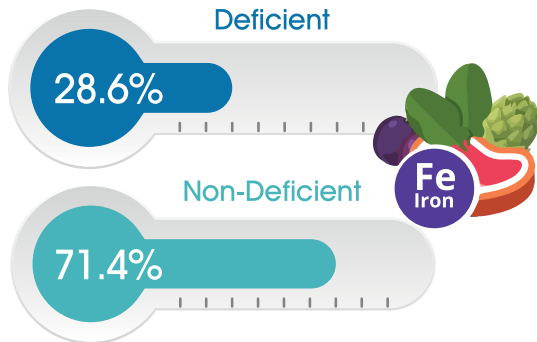
## Trends of Anaemia in Pakistan

The prevalence of anaemia has been consistently high since 2001 when it stood at 50.9%, then rose to 61.9% in 2011, and declined to 53.7% in 2018.



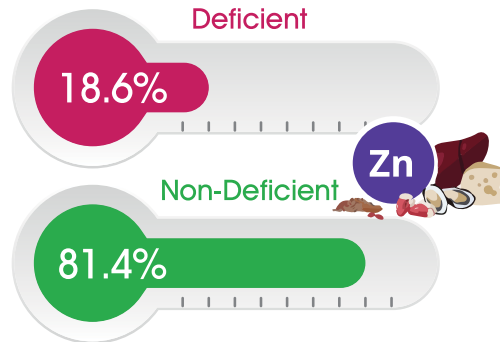
### Iron Deficiency Anaemia Among Children Under Five

The prevalence of iron deficiency anaemia is 28.6% with a slightly higher proportion (29.1%) among boys than girls, and in rural (28.9%) than urban populations.



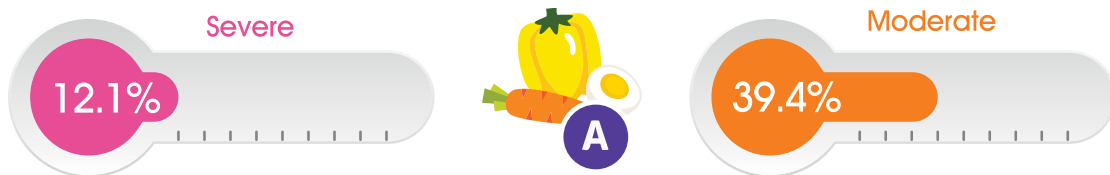
### Zinc Deficiency Among Children Under Five

The prevalence of zinc deficiency is 18.6%, with similar proportions among boys and girls. Rural children have a slightly higher prevalence (19.5%) than those in urban areas (17.1%).



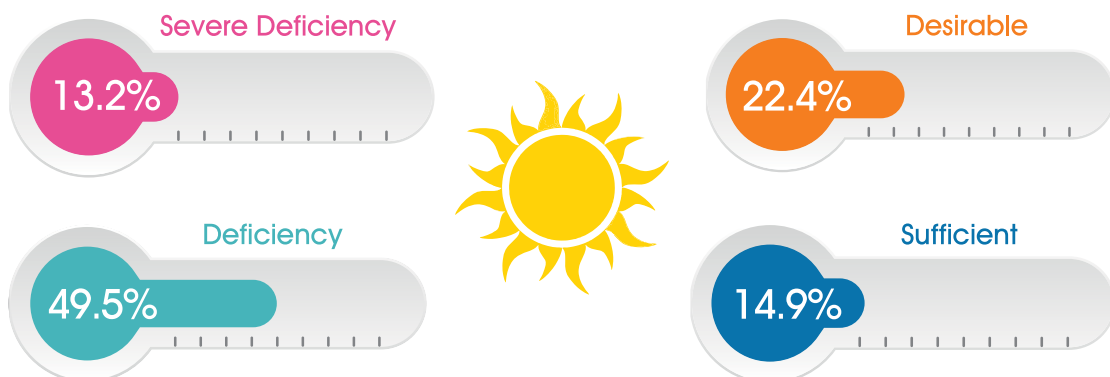
### Vitamin A Deficiency Among Children Under Five

About 51.5% of children have vitamin A deficiency, of whom 12.1% have a severe deficiency. Prevalence is slightly higher (51.7%) among boys than in girls (51.3%).



### Vitamin D Deficiency Among Children Under Five

A high prevalence (62.7%) of vitamin D deficiency was observed. A significant proportion (13.2%) of children have a severe deficiency. The prevalence is slightly higher (63.1%) among girls than boys (62.4%).





## PROGRAMME COVERAGE

### DEWORMING

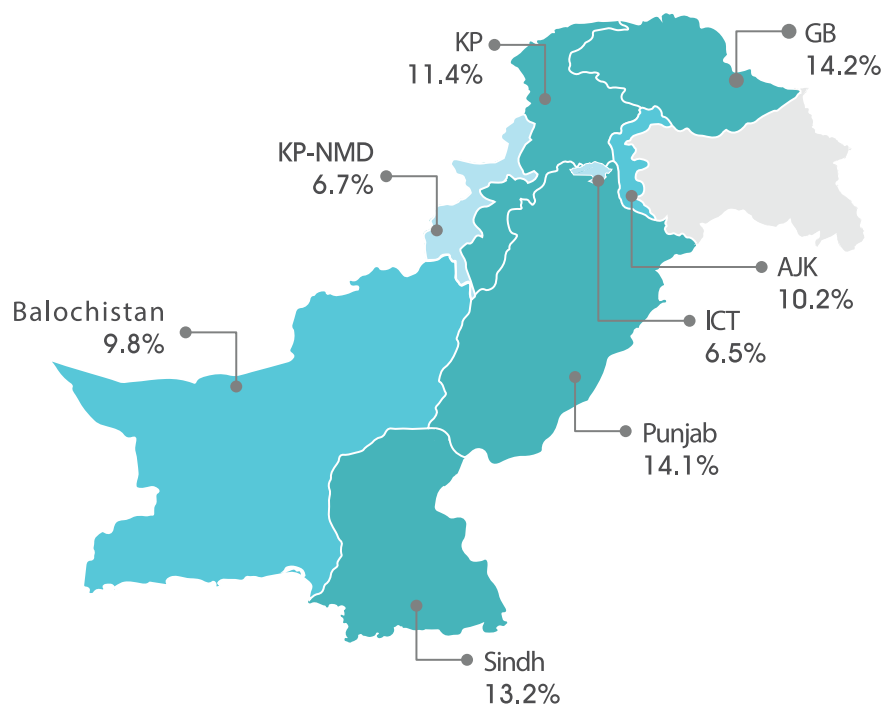
Only 13.1% children aged 24–59 months were reported to have been given deworming medication in the six months prior to the survey, with lower coverage in urban (10.7%) than in rural (14.5%) settings.

#### Deworming by Locality (Urban/Rural)



Deworming medication in last 6 months

#### Deworming by Province/Region



Coverage of deworming medication is highest in GB (14.2%) and Punjab (14.1%) and lowest in ICT (6.5%) and KP-NMD (6.7%).

## INFANT AND YOUNG CHILD FEEDING (IYCF) PRACTICES

### • BREASTFEEDING • COMPLEMENTARY FEEDING

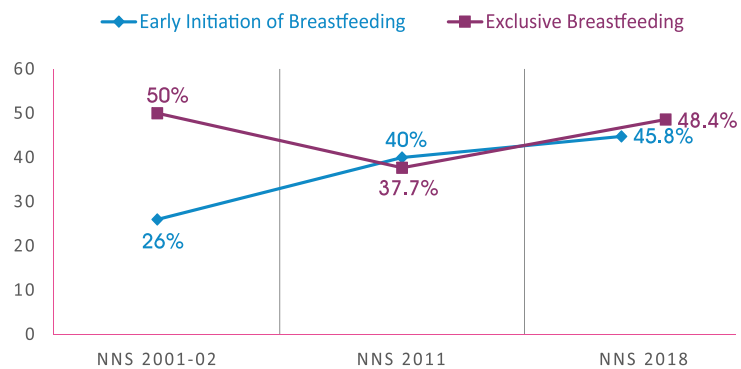
NNS 2018 finds that early initiation of breastfeeding, exclusive breastfeeding and continued breastfeeding show an upward trend from 2011, but most indicators related to complementary feeding are declining except the proportion of children receiving an adequately diversified diet.

### BREASTFEEDING

While there has been a steady increase in the proportion of children receiving breastmilk during the first hour after birth between 2011 and 2018, the trend for exclusive breastfeeding is not linear. From 50% in 2001, it decreased to 37.7% in 2011 and increased again to 48% in 2018, bringing Pakistan close to the World Health Assembly target of 50%.

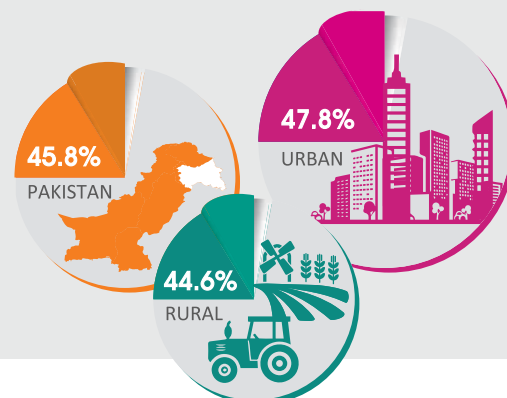


#### Breastfeeding Trends

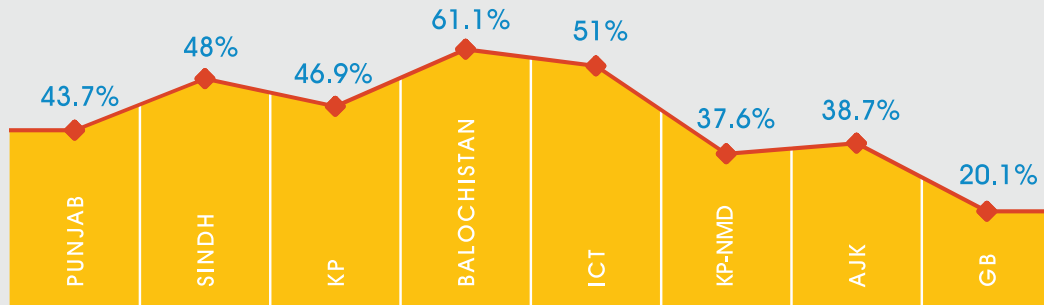


Nearly half (45.8%) of Pakistani babies start breastfeeding within the first hour of birth, an improvement of 6 percentage points from 2011. The practice of early initiation of breastfeeding is only three percentage points higher in urban areas than in rural areas.

#### Early initiation of breastfeeding (within first hour of birth)

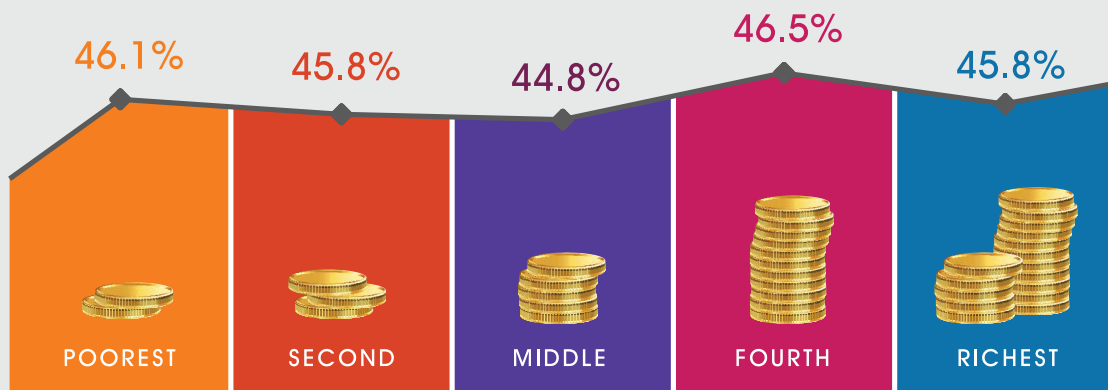


### Early Initiation of Breastfeeding (within first hour of birth) by Province/Region



The practice of early initiation of breastfeeding varies from 20.1% in GB to 61.1% in Balochistan.

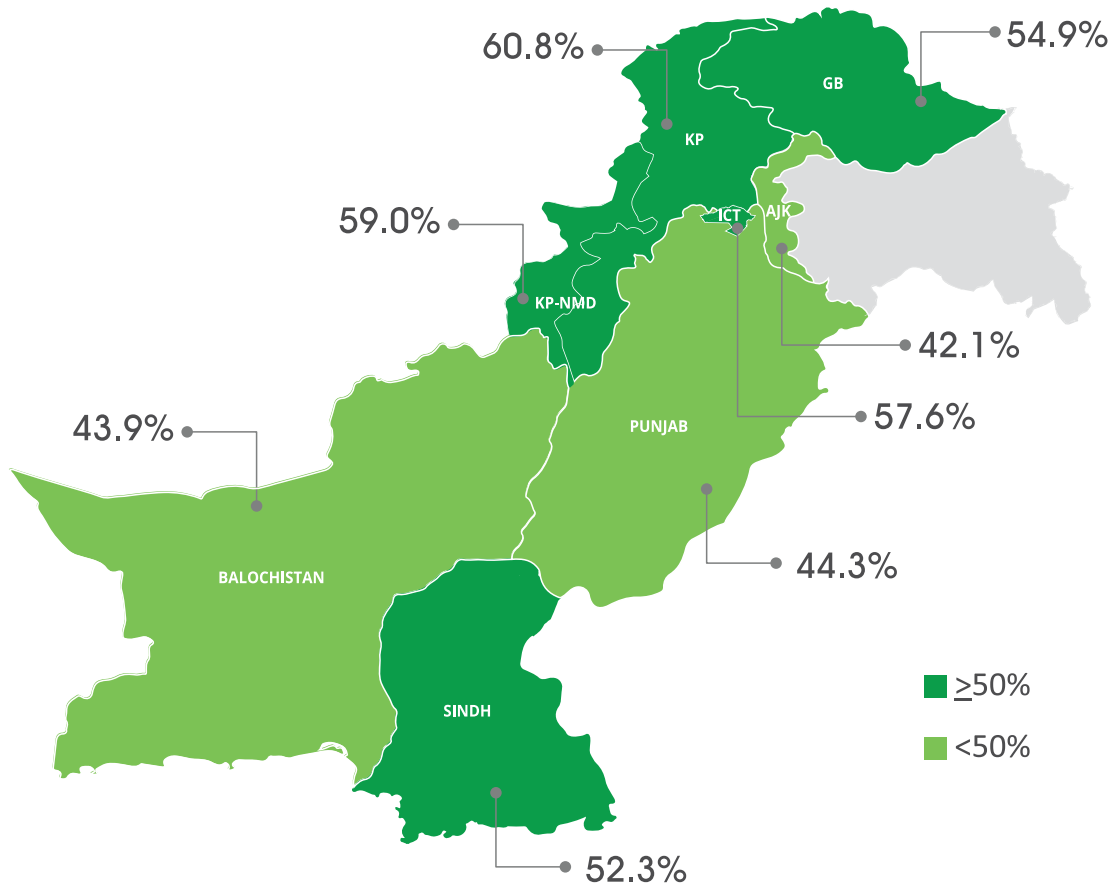
### Early Initiation of Breastfeeding (within first hour of birth) by Wealth Quintile



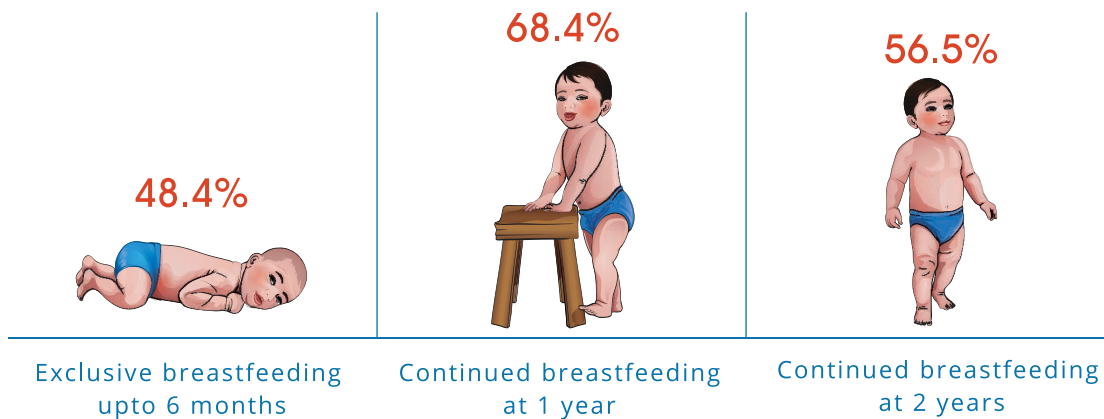
There is no significant correlation found between wealth and early initiation of breastfeeding.

### Exclusive Breastfeeding by Province and Region

The proportion of children who are exclusively breastfed for the first six months of life is highest in KP (60.7%) and KP-NMD (59.0%), and lowest in AJK (42.1%) and Balochistan (43.9%) respectively.



### Breastfeeding Practices in Pakistan

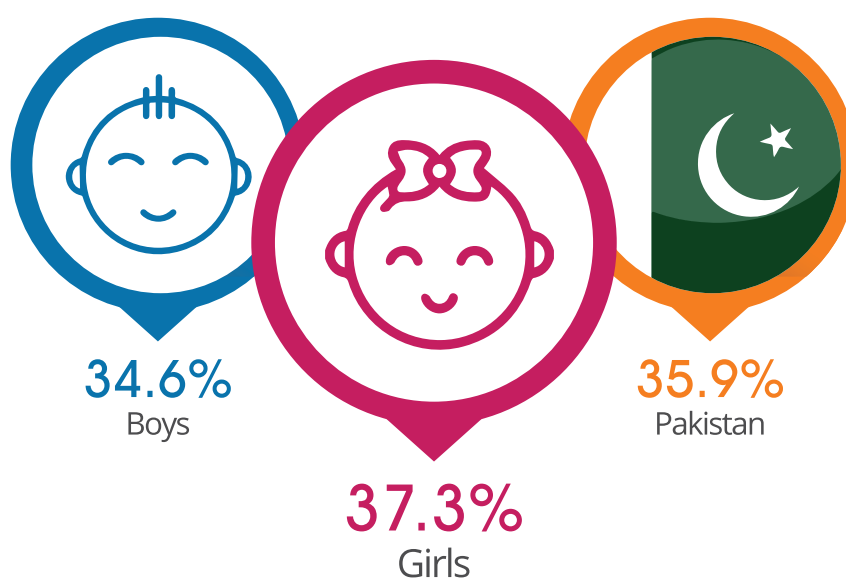


Prevalence of the practice of continued breastfeeding is highest at one year of age (68.4%) and thereafter decreases to 56.5% at two years of age. Relative to the rates in 2011 this represents a decrease from 77.3% and an increase from 54.3%, respectively.

## COMPLEMENTARY FEEDING PRACTICES IN PAKISTAN

Age-appropriate complementary feeding is an essential addition to breastfeeding after a child is six months of age. Quality complementary feeding is measured using three indicators: minimum dietary diversity, minimum meal frequency and minimum acceptable diet. NNS 2018 found all indicators to be far below acceptable levels.

### Age-Appropriate Complementary Feeding by Gender

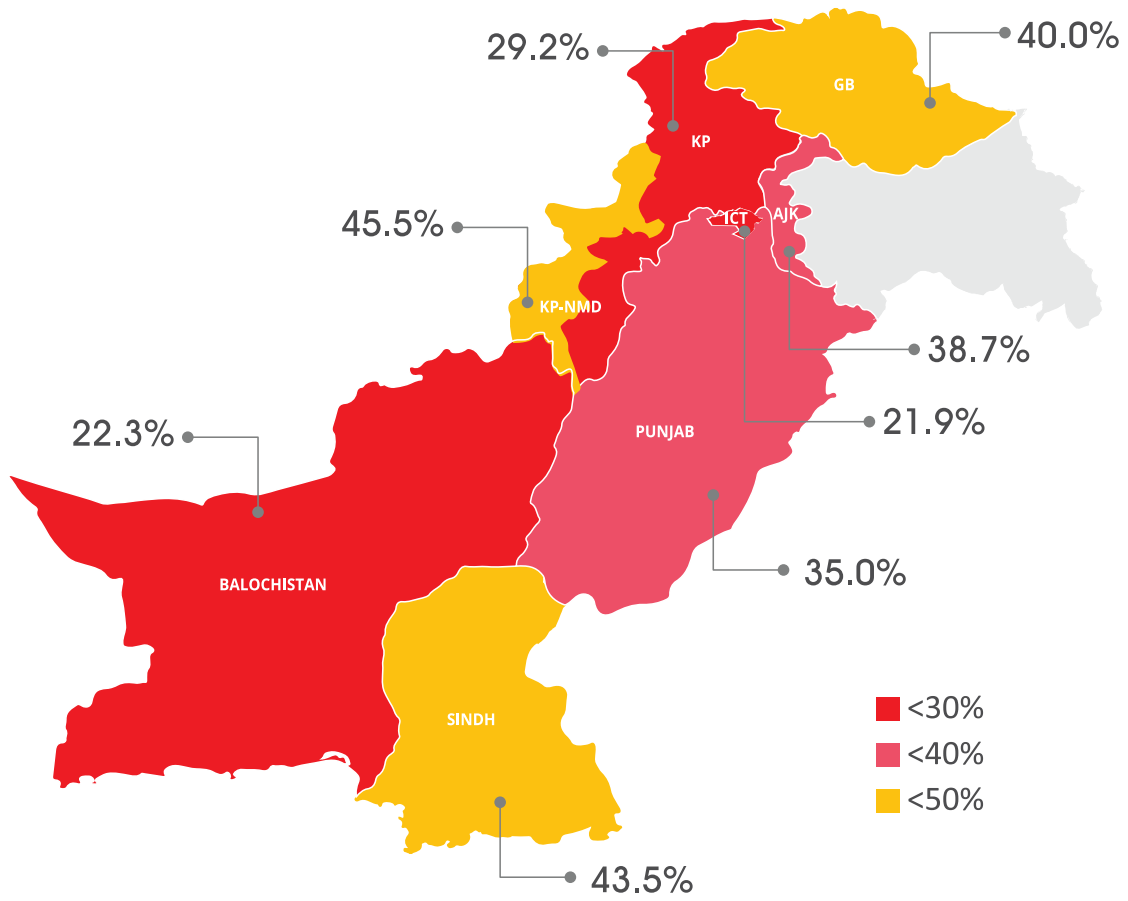


Only one of every three young children receives complementary food between 6–8 months of age. A smaller proportion of boys (34.6%) are introduced to complementary food at the right age compared to girls (37.3%).

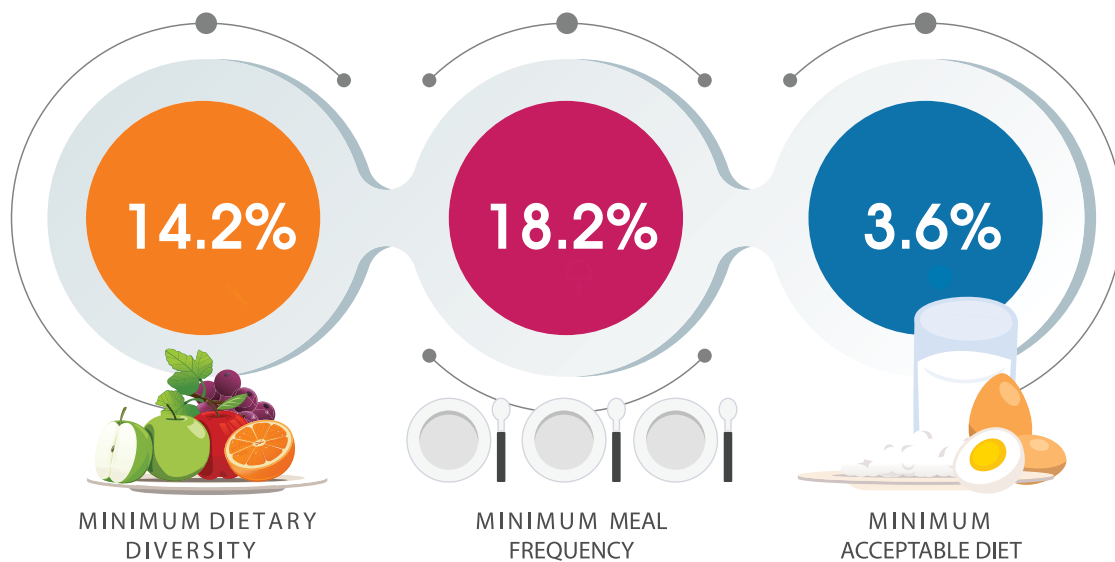
Some provinces/regions (Sindh and KP-NMD) perform better than others but timely introduction of complementary feeding needs significant improvement in across Pakistan.



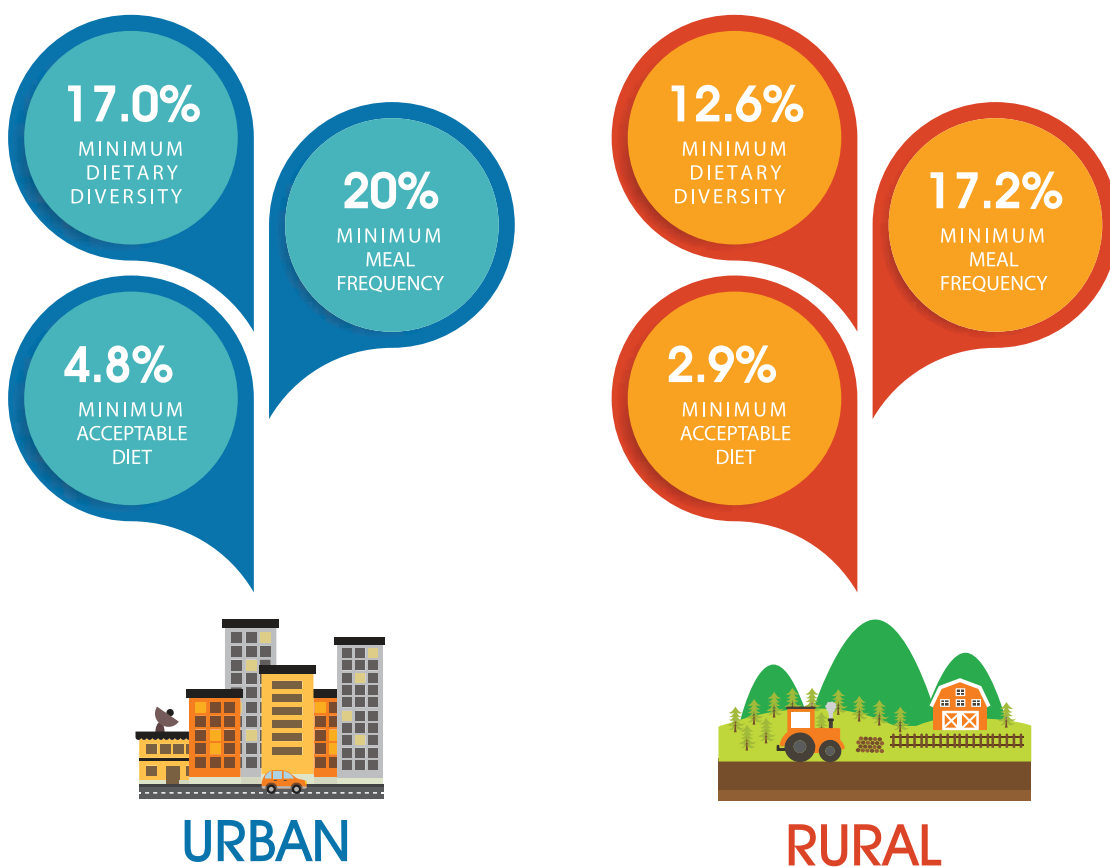
### Age-Appropriate Complementary Feeding by Province/Region



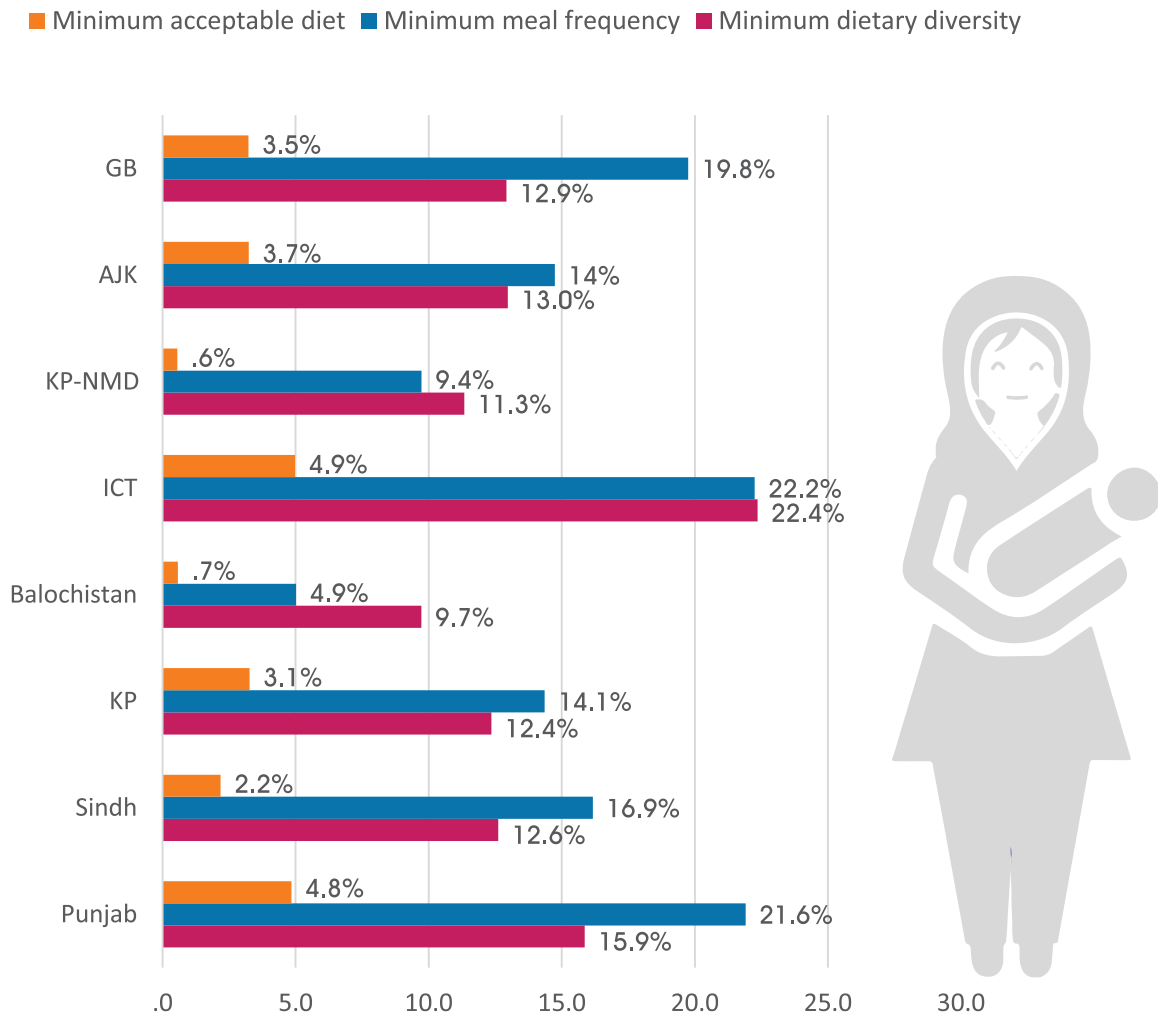
## Complementary Feeding in Pakistan



## By Locality (Urban/Rural)



## Complementary Feeding Practices by Province/Region

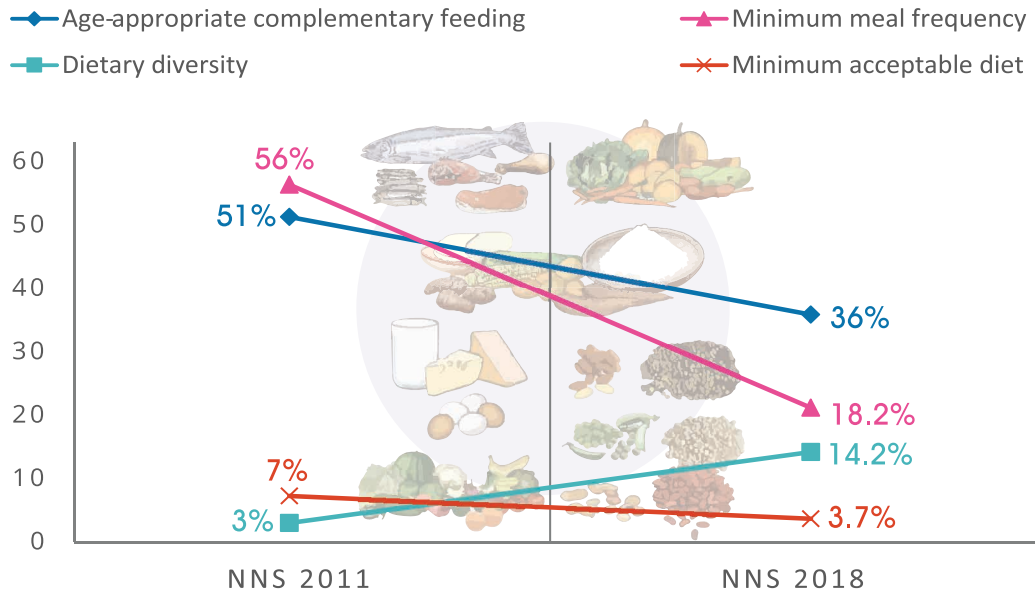


Over time, three of the four complementary indicators have declined significantly. This points to a need for robust and large-scale promotion of adequate complementary practices in Pakistan to contribute to reducing stunting among young children.

Only one in seven children (14.2%) aged 6–23 months receive a meal with minimum dietary diversity, with at least four different food groups. One in four children (18.2%) receives the minimum number of meals a day. Complementary foods that meet the requirements of a minimum acceptable diet to ensure optimal growth and development for children aged 6–23 months are provided to less than one in 20 children (3.6%). More children in urban areas receive adequate complementary foods than their peers in rural areas, but rates are critically low in both localities.



### Trends in Complementary Feeding



All complementary feeding indicators are far below acceptable levels

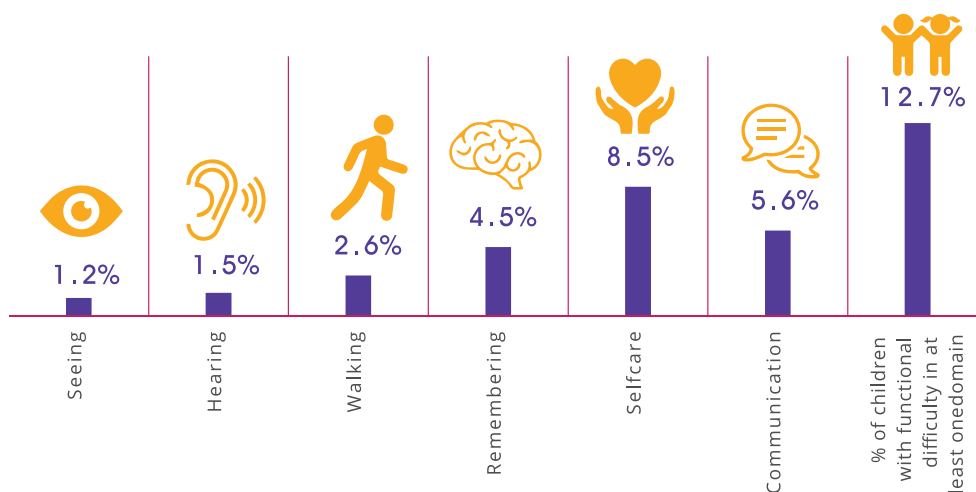


## DISABILITY AMONG CHILDREN AGED 24-59 MONTHS

The Washington Group on Disability Statistics determines functional disability among children aged 2–5 years based on six core functional domains. NNS 2018 found that 12.7% children have a functional disability in one of these six domains. Around 1.2% demonstrate functional disability in seeing, 1.5% in hearing, 2.6% in walking, 4.5% in remembering, 8.5% in selfcare and 5.6% in communication.

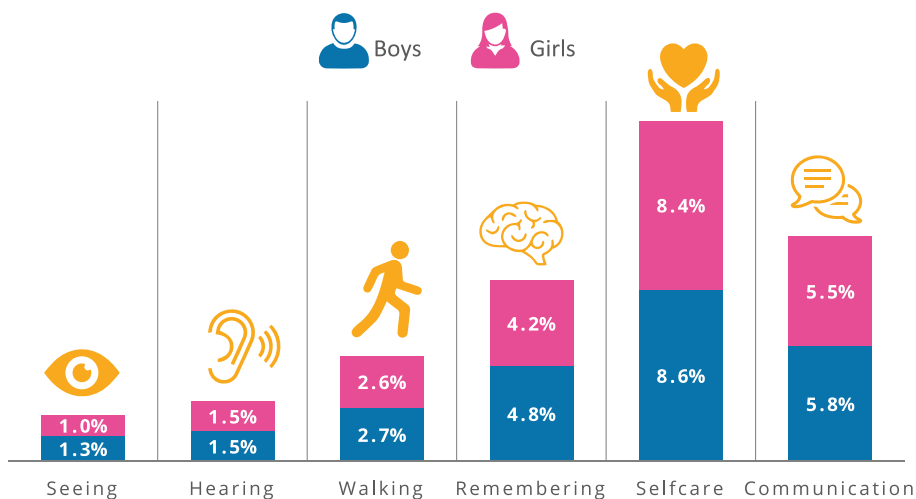


### Functional Disability Among Children Aged 24-59 Months



In Pakistan, boys are more likely to have a functional disability related to remembering. For all other types of functional disability, boys and girls are equally affected.

### Functional Disability Among Children Aged 24-59 Months by Gender







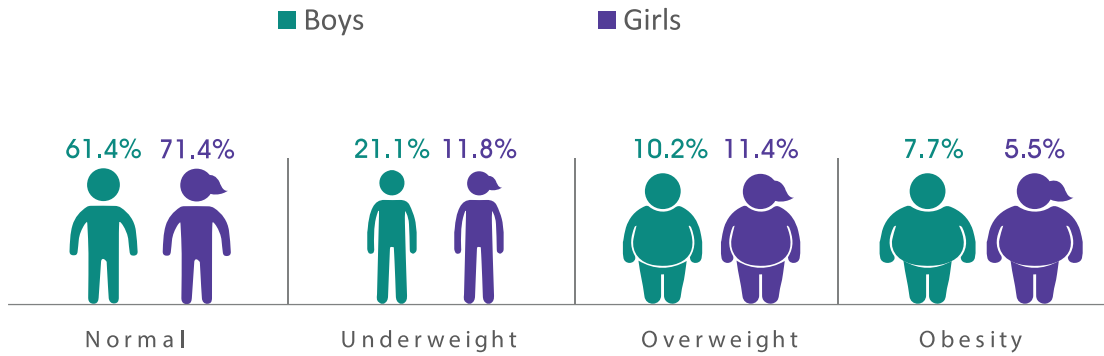
# ADOLESCENT GIRLS & BOYS (10-19 YEARS)

---

About two-thirds of the sampled adolescent girls aged 10–19 years (62.9%) lived in rural areas and 37.1% in urban areas. The majority of girls (94.7%) in the survey sample were never married while 5.2% were currently married. A large proportion (38%) of adolescent girls belonged to the two highest wealth quintiles. Of the sampled adolescent boys (10–19 years) 63.5% lived in rural areas and 36.5% in urban areas.

## ADOLESCENTS NUTRITION (10-19 YEARS)

### Nutritional Status of Adolescent Girls and Boys

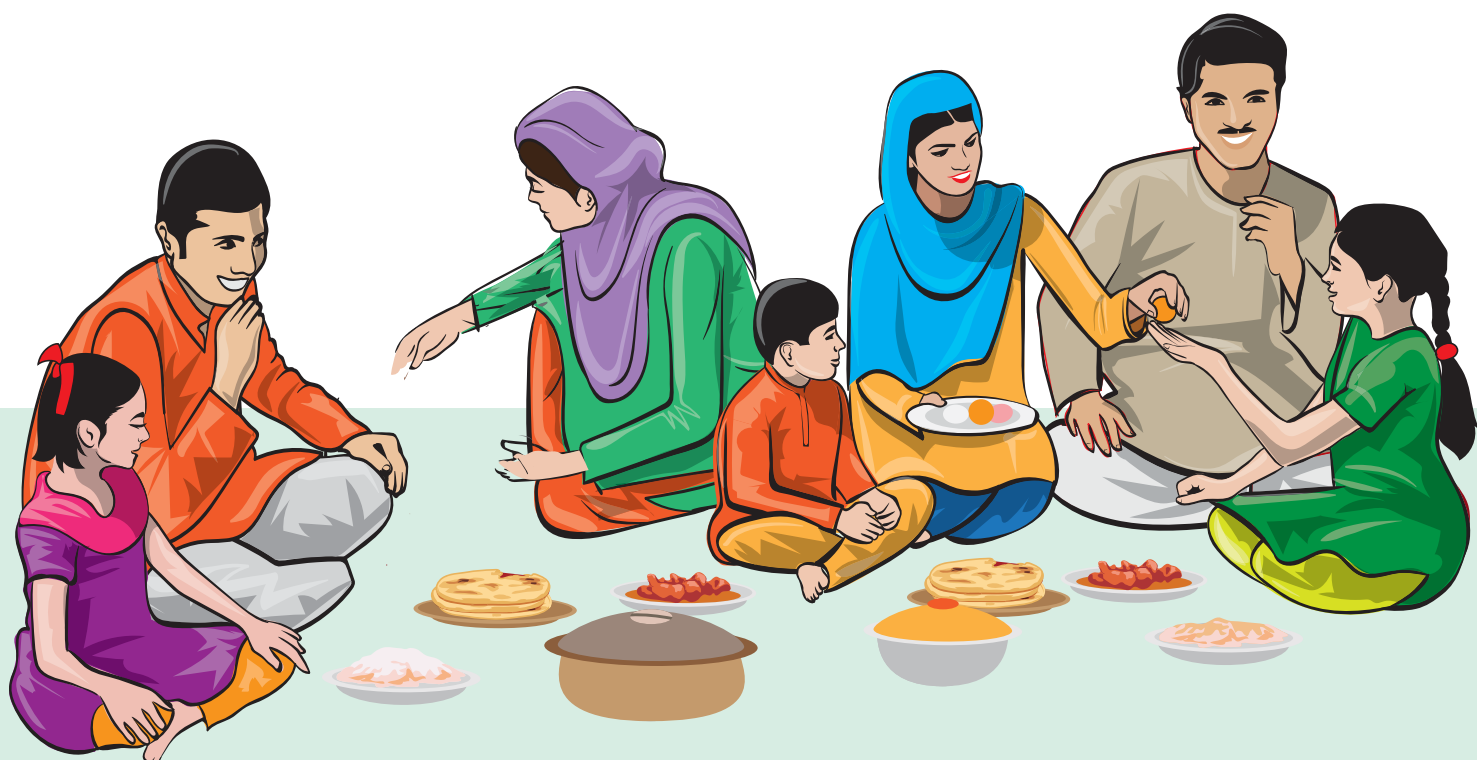
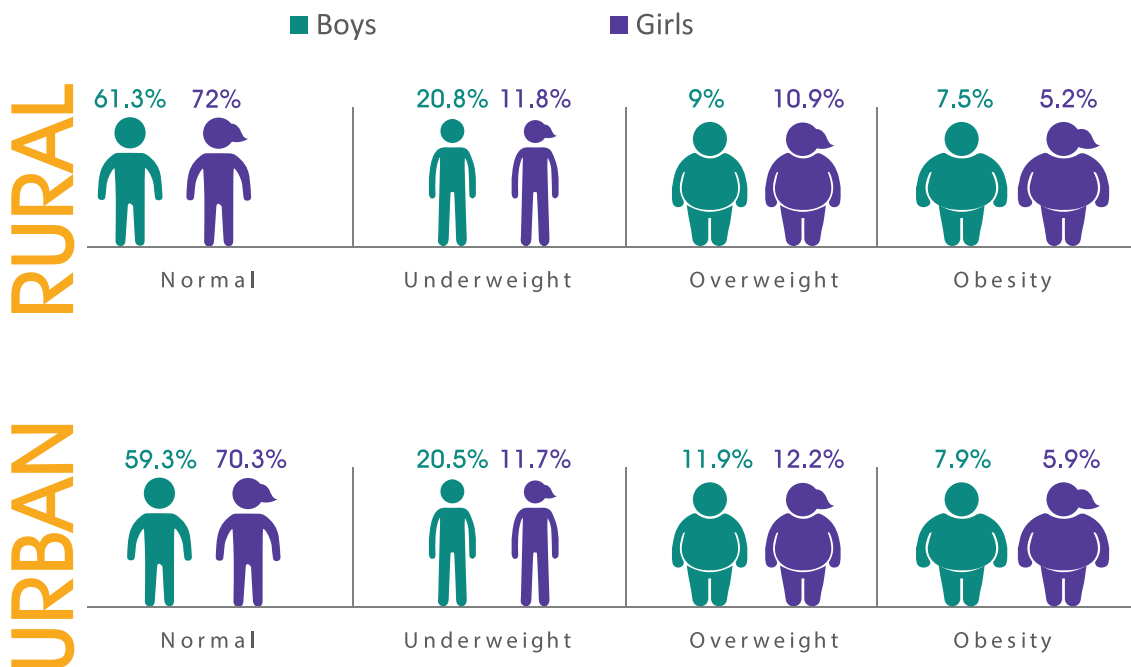


NNS 2018 shows that almost one in eight adolescent girls is underweight. Adolescent boys are more affected than adolescent girls, with one in five underweight.

More adolescent girls are overweight compared to their male peers, at 11.4% and 10.2% respectively. Obesity is a public health issue of concern in Pakistan, with 7.7% of adolescent boys and 5.5% of adolescent girls affected. Overweight and obesity affect adolescents similarly in both rural and urban areas of Pakistan.

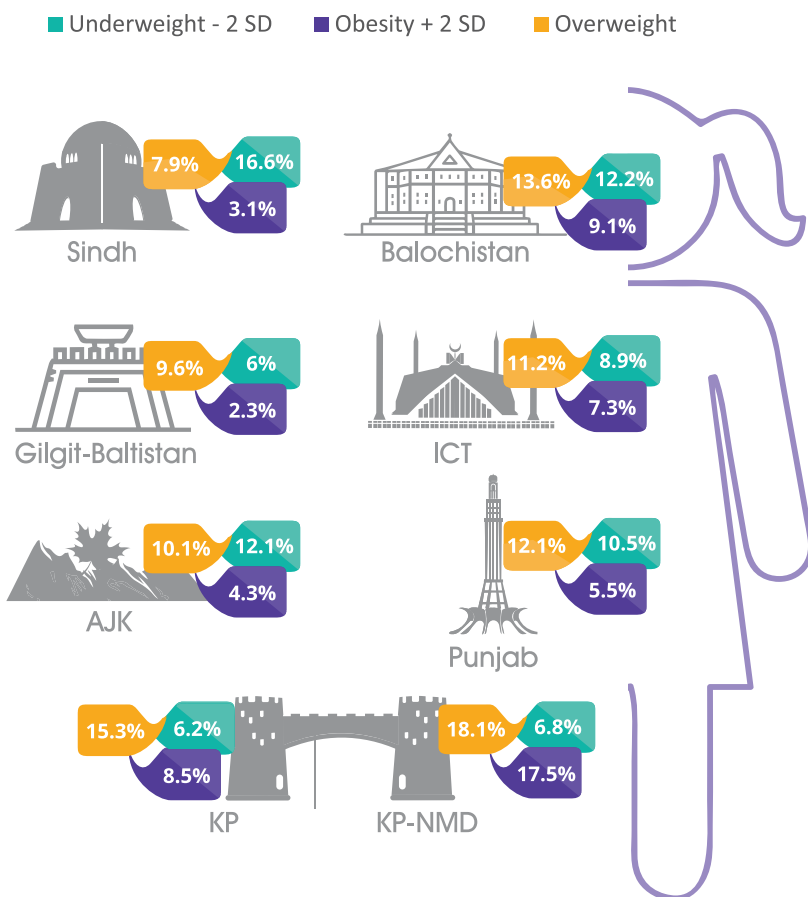


Nutritional Status of Adolescent Girls and Boys by Locality (Urban/Rural)



Across all of Pakistan's provinces/regions, the double burden of malnutrition – high prevalence of underweight combined with high prevalence of overweight or obesity – is a major concern and requires serious consideration to curb the incidence of noncommunicable diseases.

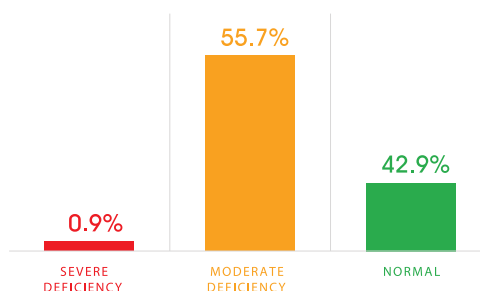
### Nutritional Status of Adolescent Girls by Province/Region



### Anaemia Among Adolescent Girls

More than half (56.6%) of adolescent girls in Pakistan are anaemic, however only 0.9% have severe anaemia. Adolescent girls in rural areas are more likely (58.1%) to be anaemic than their counterparts in urban areas (54.2%).

### Haemoglobin Status Among Adolescent Girls

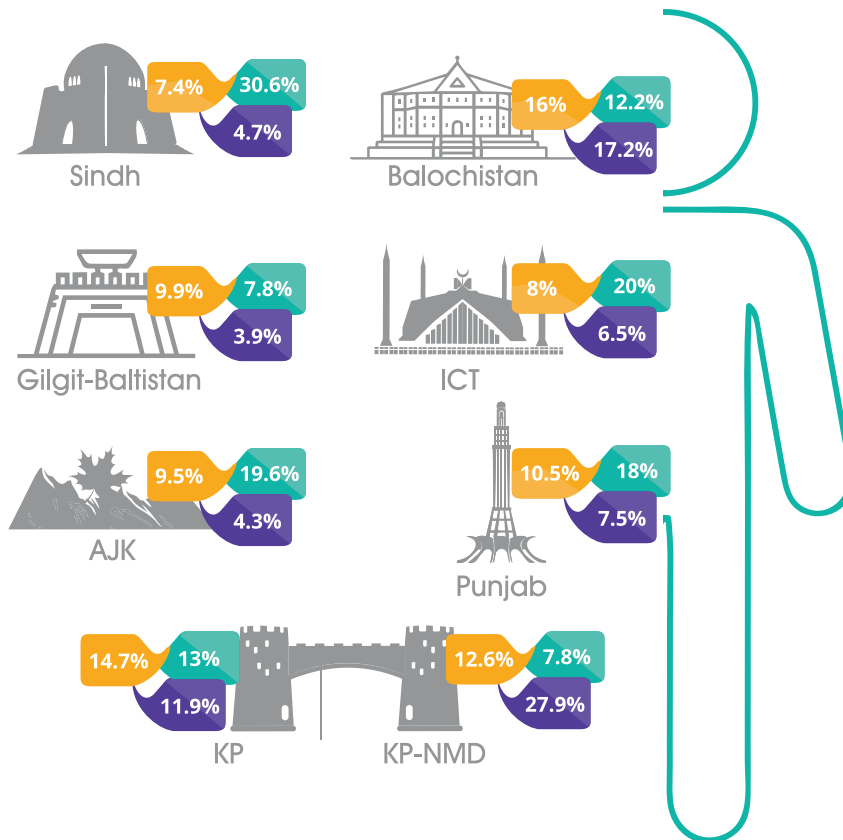






### Nutritional Status of Adolescent Boys (BMI) by Province/Region

■ Underweight - 2 SD   
 ■ Obesity + 2 SD   
 ■ Overweight







# WOMEN OF REPRODUCTIVE AGE (WRA) (15-49YEARS)

---

Overall, 61.2% of the sampled WRA belonged to rural settings and 38.8% to urban areas. Nearly half (48.5%) were not educated while 15.5% had received higher education and 14.5% had completed secondary education. Most of the sampled WRA (72.0%) were housewives with only 1.9% skilled workers and 1.7% professionals. Most sampled WRA (21.3%) came from the richest wealth index quintile and only 17.8% belonged to the poorest quintile.

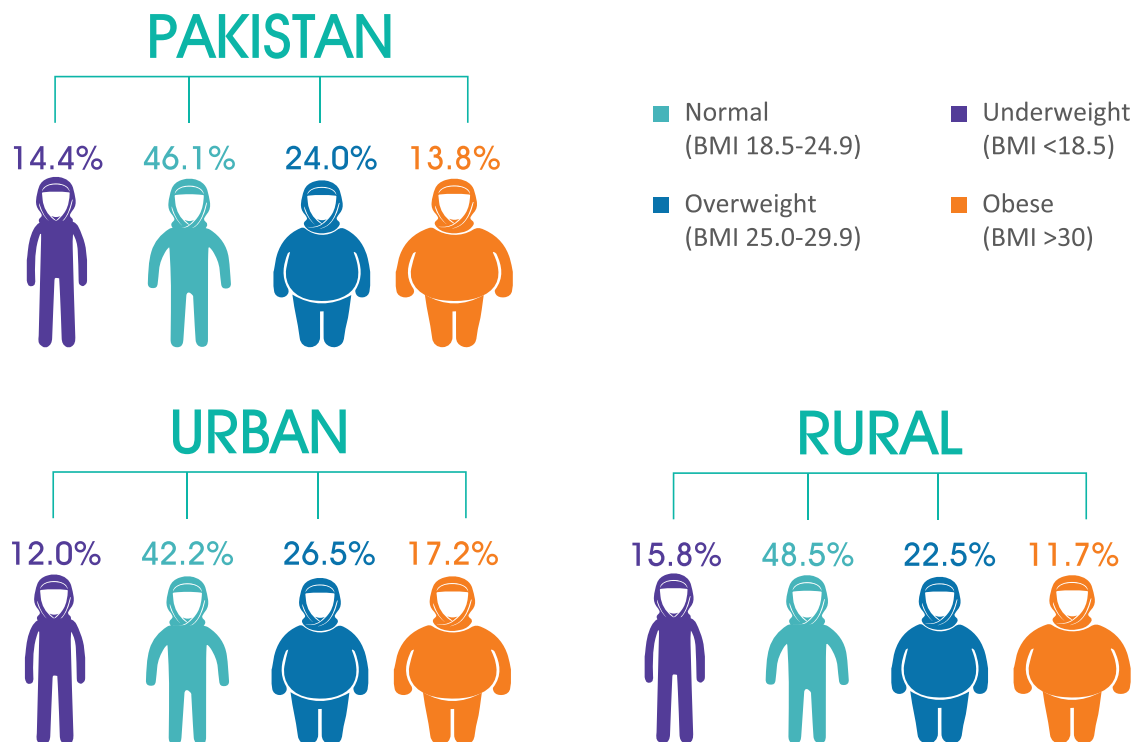


## WOMEN OF REPRODUCTIVE AGE (15-49 YRS)

### RESPONDENT CHARACTERISTICS

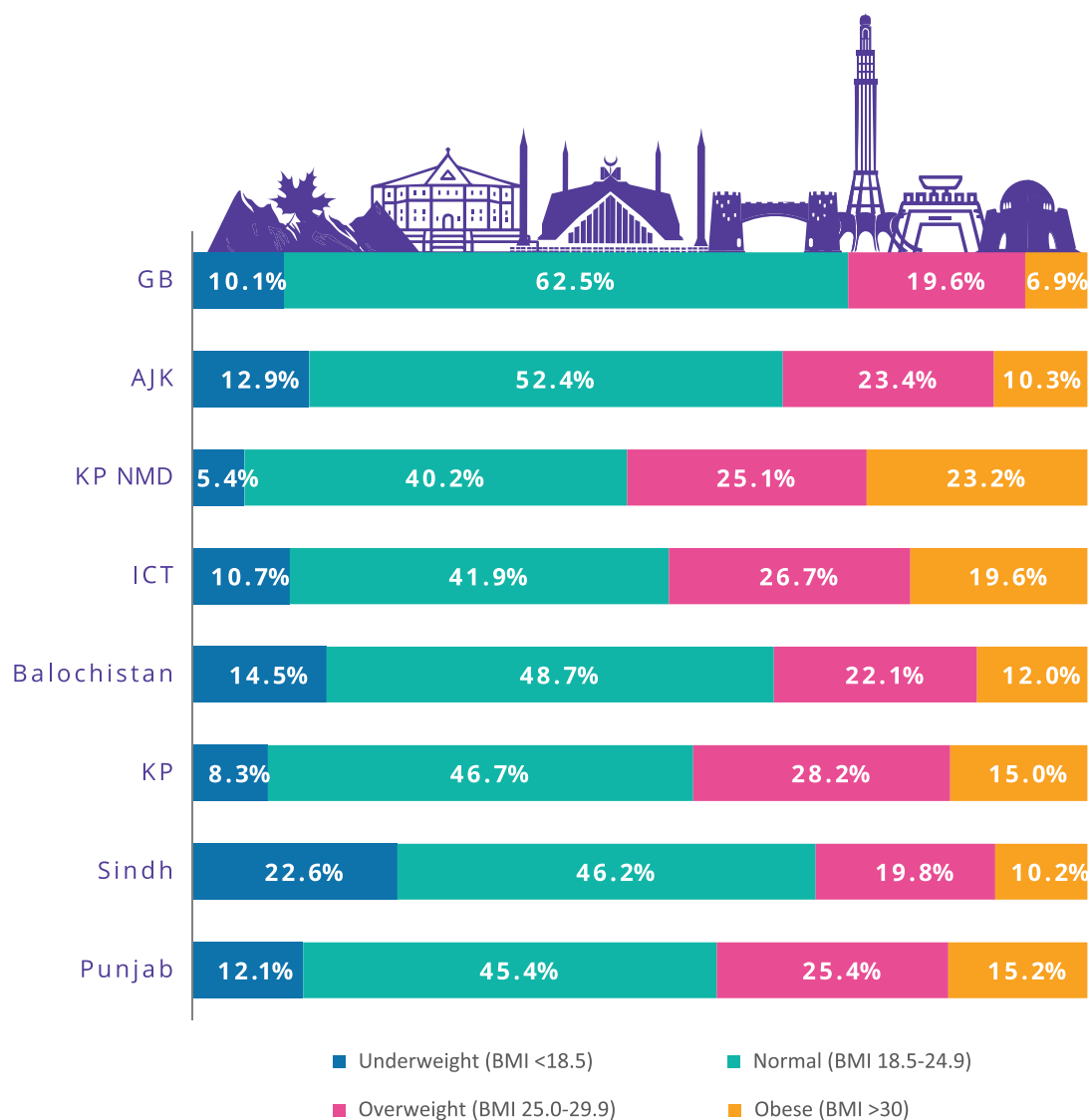
In Pakistan WRA aged 15–49 years bear a double burden of malnutrition. One in seven (14.4%) are undernourished, a decline from 18% in 2011 to 14%, while overweight and obesity are increasing. In NNS 2011 28% were reported to be overweight or obese, rising to 37.8% 2018. Urban/rural disparity is apparent: women in rural areas are more malnourished, while overweight and obesity are higher in urban women.

#### Nutritional Status of WRA (15-49 years) by Body Mass Index (BMI)



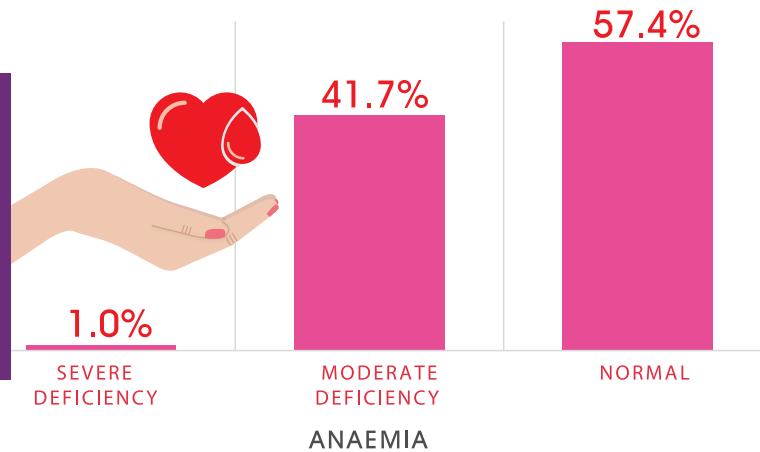
### Nutritional Status of WRA (15-49 years) by Province/Region

At provincial/regional level, Sindh, Balochistan and AJK have more undernourished women while overweight and obesity are more pronounced in ICT, KP and KP-NMD.



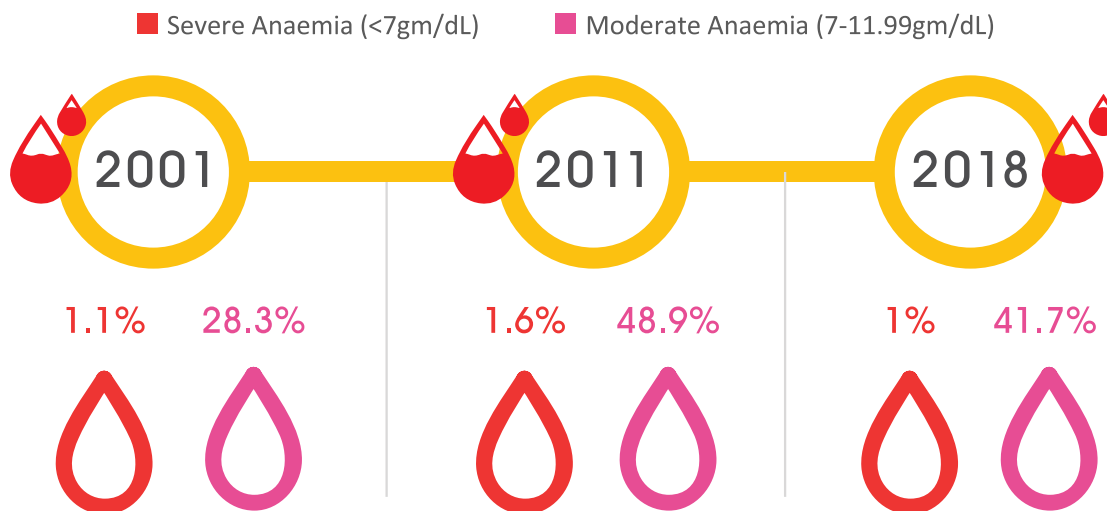
## MICRONUTRIENT DEFICIENCIES IN WOMEN OF REPRODUCTIVE AGE (15-49 YRS)

### Anaemia among Women of Reproductive age



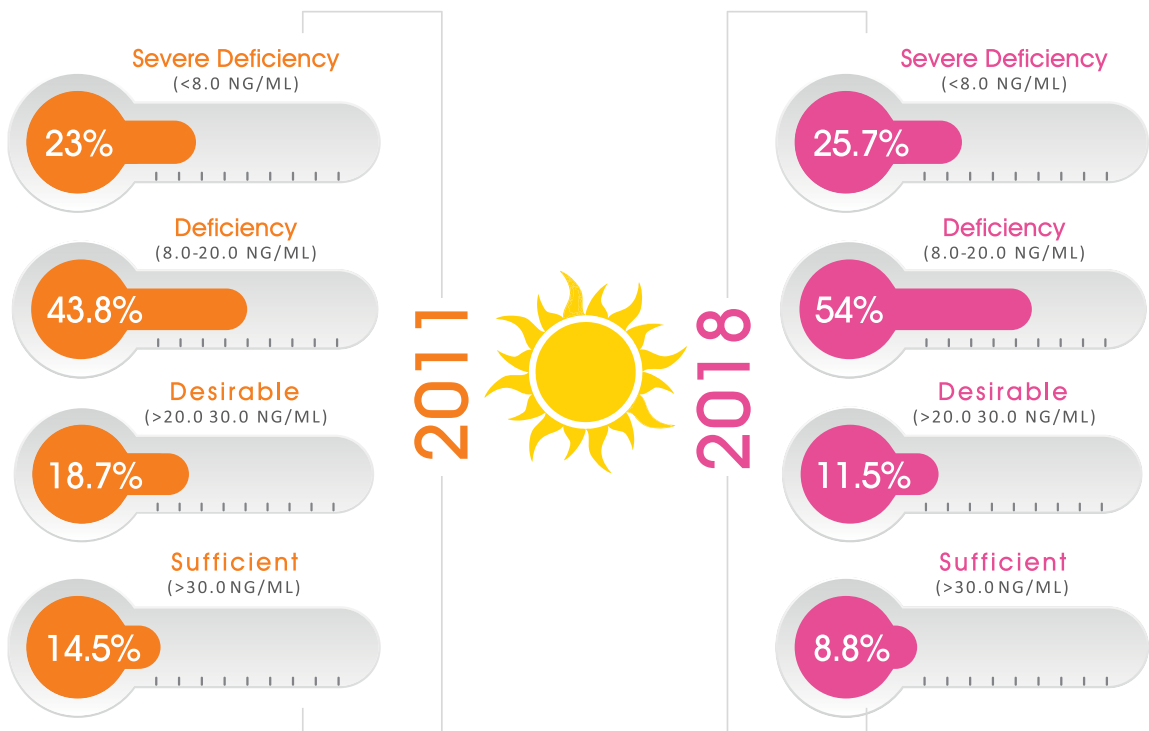
About 41.7% of WRA are anaemic, with a slightly higher proportion in rural (44.3%) than urban settings (40.2%).

### Trend Analysis in Anaemia



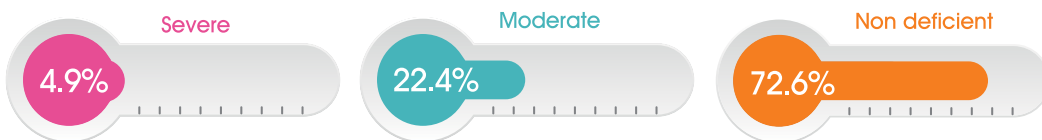
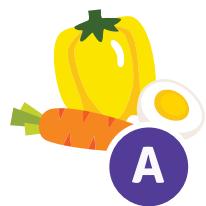
### Vitamin D Deficiency

The majority of WRA (79.7%) are affected by vitamin D deficiency, with 54.0% experiencing moderate vitamin D deficiency and 25.7% experiencing severe deficiency. Vitamin D deficiency is more common in urban (83.6%) than in rural settings (77.1%).



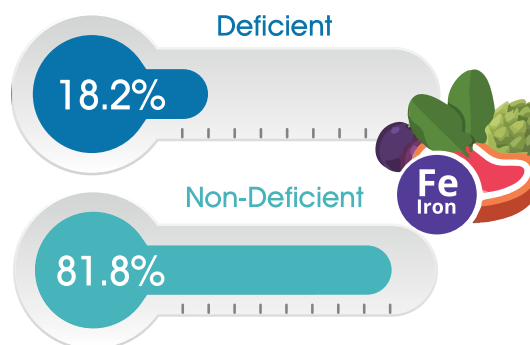
### Vitamin A Deficiency in Women Age 15-49 Years

Over a quarter of WRA (27.3%) are deficient in vitamin A, with 22.4% experiencing moderate and 4.9% severe deficiency. This is more prevalent among WRA in rural settings (29.3%). Balochistan (34.6%) has the highest proportion of WRA with vitamin A deficiency.

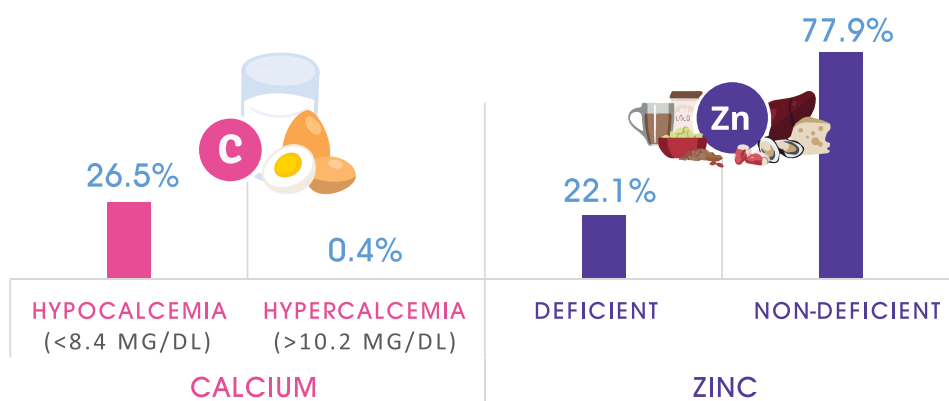


### Iron Deficiency Anaemia in WRA - 15-49 Years

About 18.2% of WRA are iron deficient. This is more pronounced among women residing in rural (18.7%) than urban (17.4%) settings. Sindh has the highest proportion of iron deficiency anaemia with about a quarter (23.8%) of all WRA affected, followed closely by Balochistan (19.0%) and Punjab (18.7%).



### Calcium and Zinc Deficiency

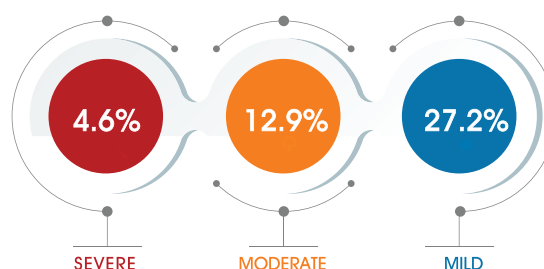


About 26.5% of WRA are hypocalcaemic while 0.4% are hypercalcaemic.

Zinc deficiency (22.1%) is more common in rural settings (24.3%) than in urban areas (18.7%). Punjab has the highest proportion of WRA with zinc deficiency (24.1%) followed by Balochistan (23.4%) and Sindh (21.4%), while KP has the lowest prevalence (15.9%).

### Urinary Iodine Excretion

About 17.5% of WRA have urinary iodine deficiency. Of these, 12.9% have moderate and 4.6% have severe deficiency. Both severe and moderate urine iodine deficiency is more prevalent in women in rural areas (18.6%) than in urban areas (16%).



# UNIVERSAL SALT IODIZATION IN PAKISTAN

---



Salt samples were taken from 100,304 households across provinces/regions and were tested using rapid test kits to identify adequately iodized salt ( $\geq 15$  ppm and  $< 40$  ppm iodine). Of these, 70.2% were rural households and the remainder urban.

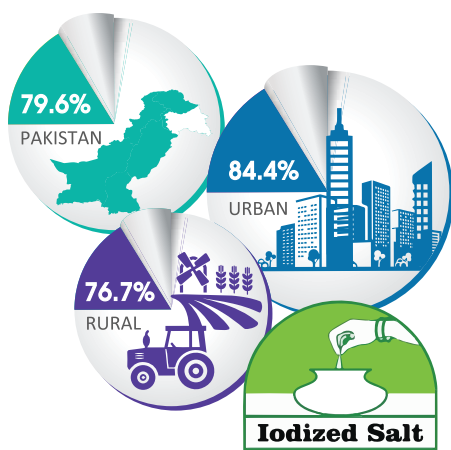




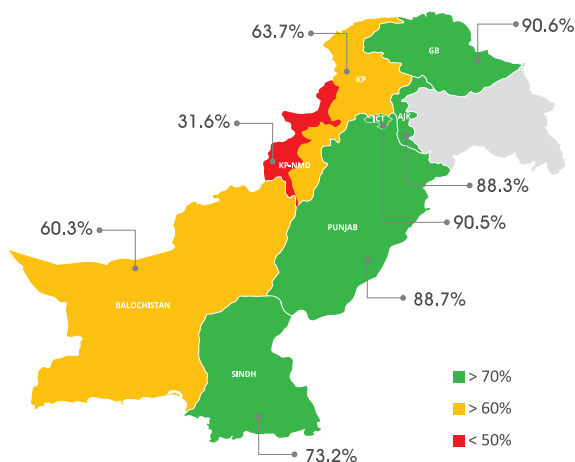
## UNIVERSAL SALT IODIZATION IN PAKISTAN

Iodine is essential for thyroid function and for physical and mental development. Daily use of adequately iodized salt is the best strategy to overcome iodine deficiency disorders. Across Pakistan, almost four out of five households consume iodized salt. A greater proportion of households in urban settings consume iodized salt compared to households in rural areas.

Use of Iodized Salt at HH Level



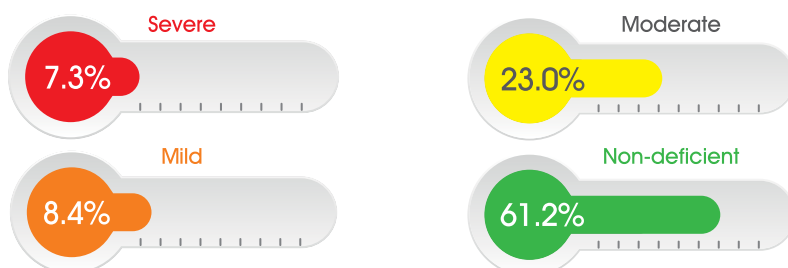
Use of Iodized Salt at HH Level by Province/Region



Consumption of iodized salt is very low (31.6 percent) in KP-NMD. By contrast, in ICT, Punjab, AJK and GB, consumption of iodized salt exceeds 85%.

## Urinary Iodine Excretion (UIE) Among Children Aged 6-12 Years

Low urinary iodine excretion is a reliable indicator of iodine deficiency. The survey showed that 15.7% of children aged 6–12 years have low urinary iodine excretion, with a slightly higher rate amongst girls (16.2%) than boys (15.2%). Prevalence of low urinary iodine excretion is slightly higher among rural children (16.9%) than urban children (14.0%).





A photograph of two young boys washing their hands under a running water tap. The boy on the right is leaning forward, cupping his hands under the water. The boy on the left is smiling and looking towards the camera. The background is slightly blurred, showing trees and a building. The entire image has a purple tint.

# NUTRITION SENSITIVE SECTORS

---

A total of 96,307 people lived in households that were assessed for food insecurity using the Food and Agriculture Organization's Food Insecurity Experience Scale (FIES), which captures self-reported food-related behaviours and experiences associated with increasing difficulties in accessing food due to resource constraints.

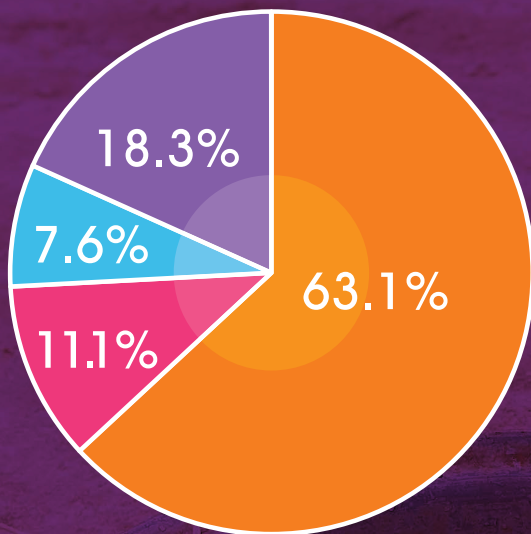
Drinking water sample was collected from 31,828 households to determine water quality.



## FOOD SECURITY

More than half of households (63.1%) are “food secure” on the FIES measure, however over third (36.9%) remain food insecure. A larger percentage of households are food secure in GB (75.6%) and KP (70.9%) and experience less severe food insecurity than in Balochistan (50.3%) and KP-NMD (54.6%).

### Household Food Insecurity Based on FIES Pakistan

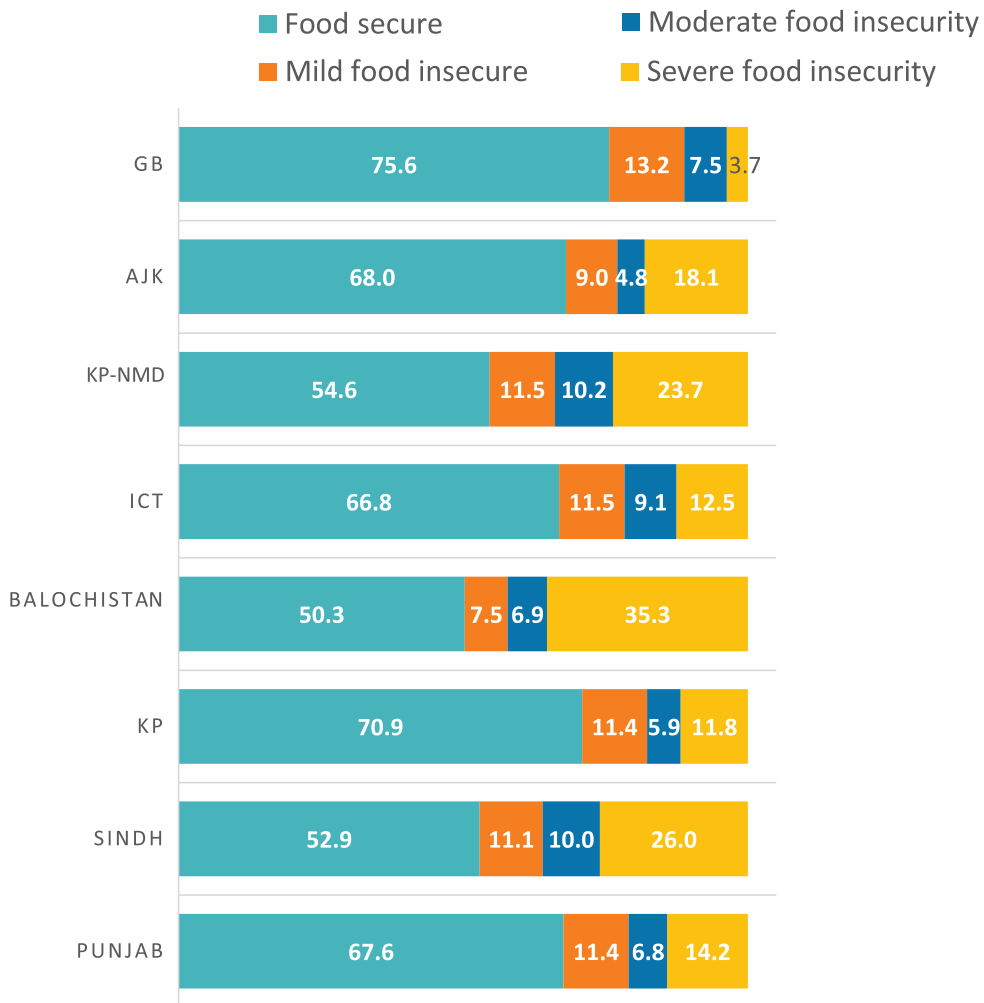


- Food secure
- Mild food insecure
- Moderate food insecurity
- Severe food insecurity

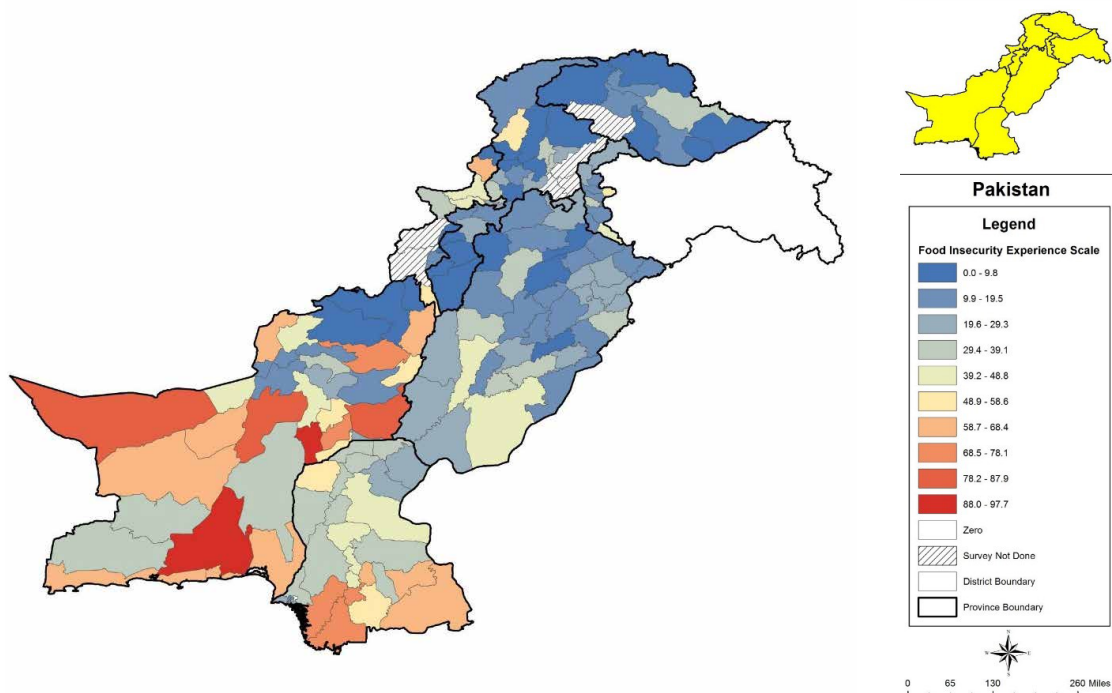




### Household Food Insecurity by Province and Region



### National Nutrition Survey 2018



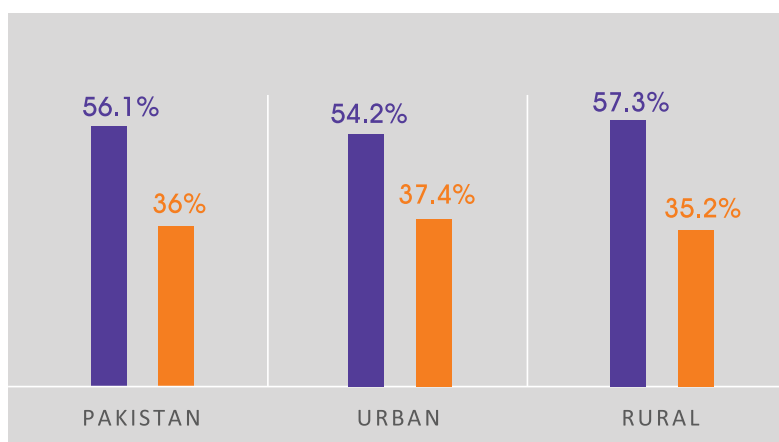
## WATER, SANITATION AND HYGIENE (WASH)

Drinking water from 56.1% of households in Pakistan is contaminated with coliforms, with a slightly higher rate in rural (57.3%) than in urban areas (54.2%). The highest prevalence of coliform contamination is in ICT (92%) and the lowest in GB (12%).

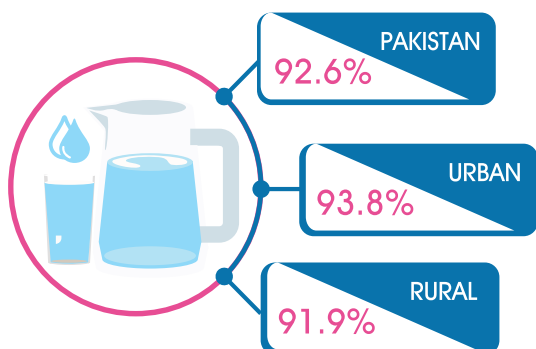
About 36.0% of households in Pakistan drink water contaminated with E. Coli, with a slightly higher rate in urban (37.4%) than rural areas (35.2%). The highest prevalence of E. Coli contamination is in KP-NMD (78.3%) and the lowest in Punjab (30.4%).



- Coliform in household drinking water ( $\geq 1$  cfu/ml)
- E. Coli in household drinking water ( $\geq 1$  cfu/ml)

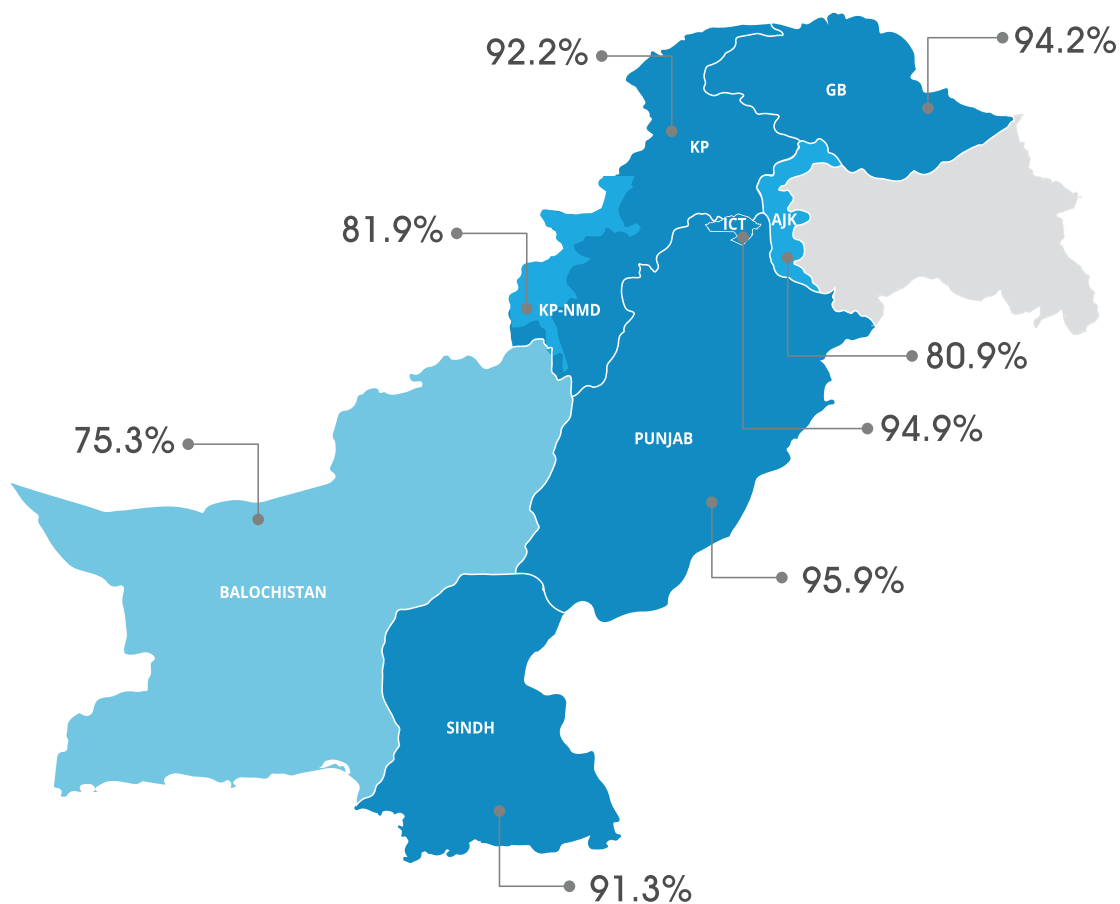


### Household Using Improved Sources of Drinking Water



Over nine out of ten households (92.6%) in Pakistan have access to improved sources of drinking water. There is some disparity in urban and rural populations, and variations between provinces/regions. Balochistan has the lowest proportion of households with access to improved sources of drinking water (75.3%).

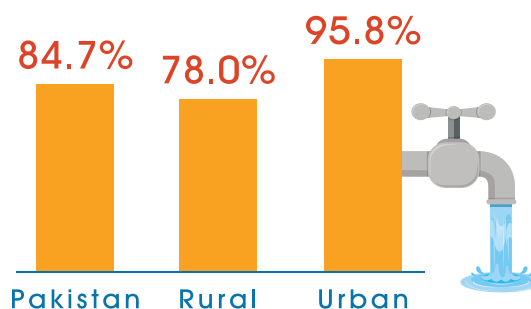
### Percentage Using Improved Sources of Drinking Water by Province



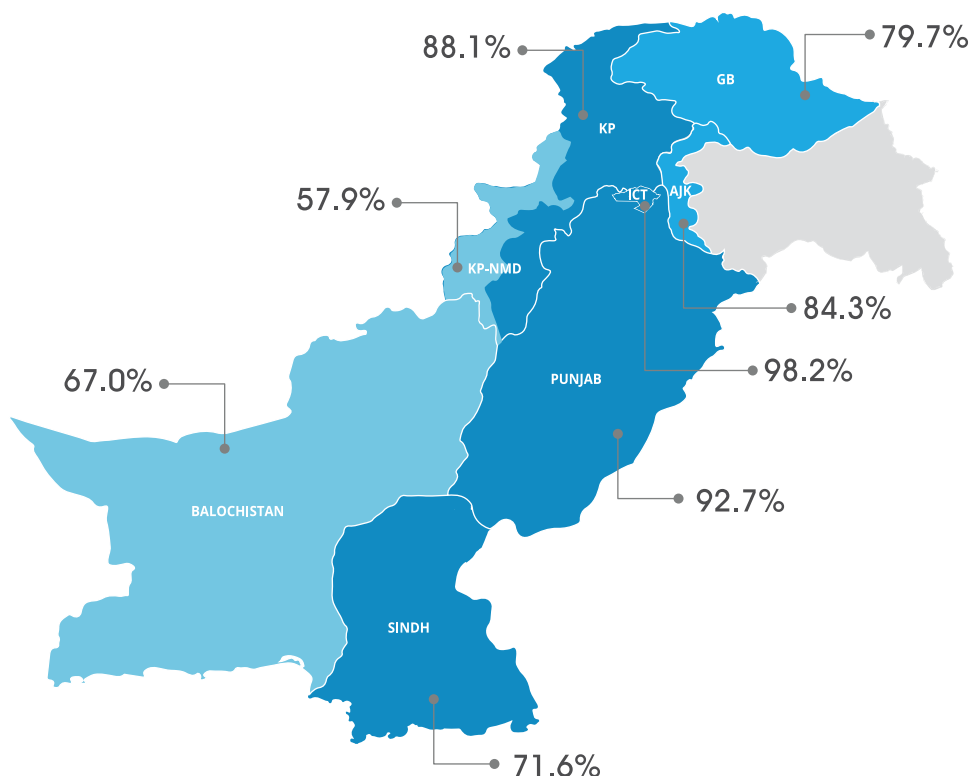


## Household Using Improved Sanitation Facility

Urban dwellers have more access to improved sanitation facilities (95.8%) than their counterparts in rural areas (78%). Almost 85% of households in Pakistan have access to an improved sanitation facility.



## Household Using Improved Sanitation Facility by Province/Region

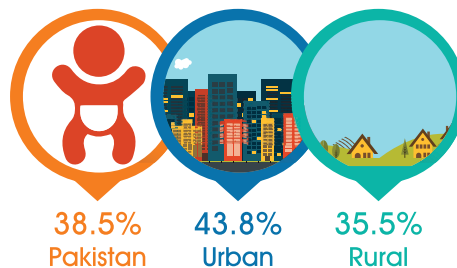


ICT (98.2%) and Punjab (92.7%) have the highest proportion of households with access to an improved sanitation facility and are thus closest to eliminating open defecation. Most other provinces/regions are on track to eliminate open defecation with a slower rate of progress, while KP-NMD (57.9%) and Balochistan (67%) lag behind on this indicator.

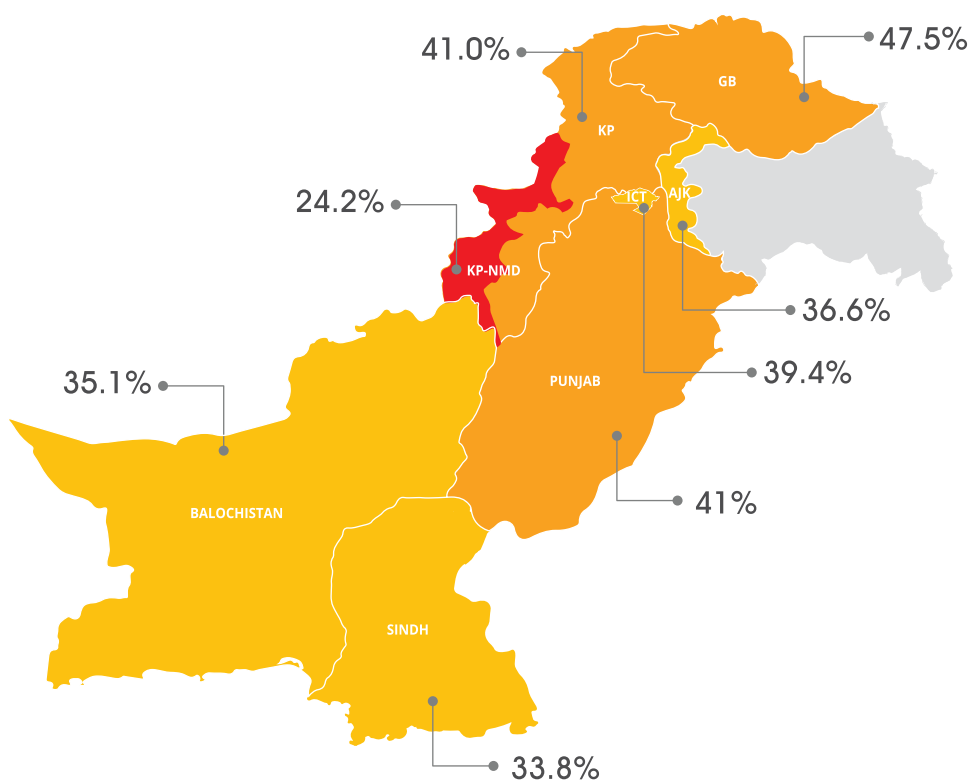
### Children whose Last Stools were Disposed off Safely

Child faeces are more infectious and contaminating of the environment than adult faeces, but the perception of people in Pakistan is the opposite.

As such, safe disposal of child faeces is low across Pakistan with only 38.5% households using a safe method. Safe disposal is poor overall across Pakistan.



### Children whose Last Stools were Disposed of Safely by Province/Region



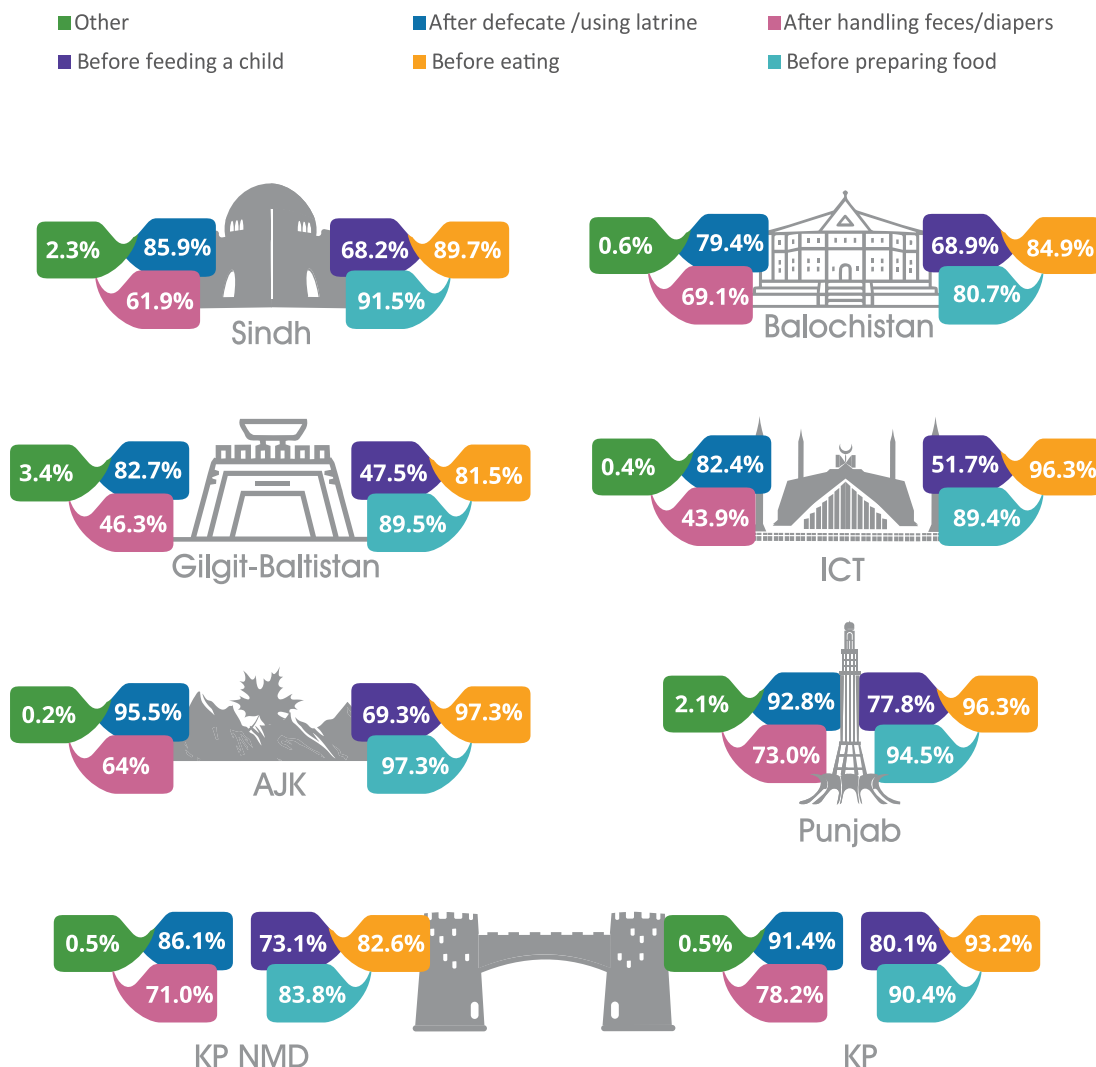
Safe disposal of child faeces is low in all provinces/regions with the highest rate in Punjab (41%). The lowest rate is to be found in KP-NMD (24.2%).

## Handwashing at Five Critical Times in Pakistan by Locality (Urban/Rural)



An encouraging proportion of the population practices handwashing with soap and water at five critical times (over 96% depending on the practice). There is little disparity between urban and rural populations.

## Handwashing at Five Critical Times by Province/Region



Handwashing with soap and water at five critical times, is widely practiced in all provinces/areas. AJK leads the trend for handwashing before preparing food or eating (97.4%) people. The widest disparity in practices relates to washing hands before feeding a child, with over 32 percentage points between the highest, KP-NMD and the lowest, GB, and after handling a child’s faeces, with 34 percentage points between the highest, KP, and the lowest, ICT.

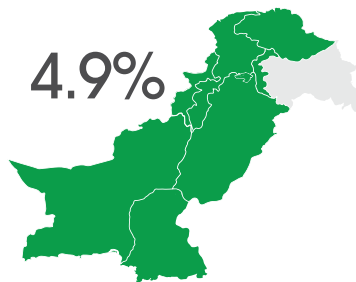
Punjab, KP and AJK are ahead of other provinces/regions in washing hands with soap. Handwashing after defecation is practiced by most Pakistanis, from 79.4% in Balochistan to 95.6% in AJK.



# SOCIAL PROTECTION

---

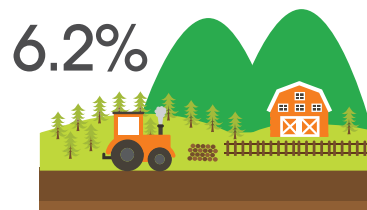
Population Covered under Social Protection by Locality (Urban/Rural)



PAKISTAN



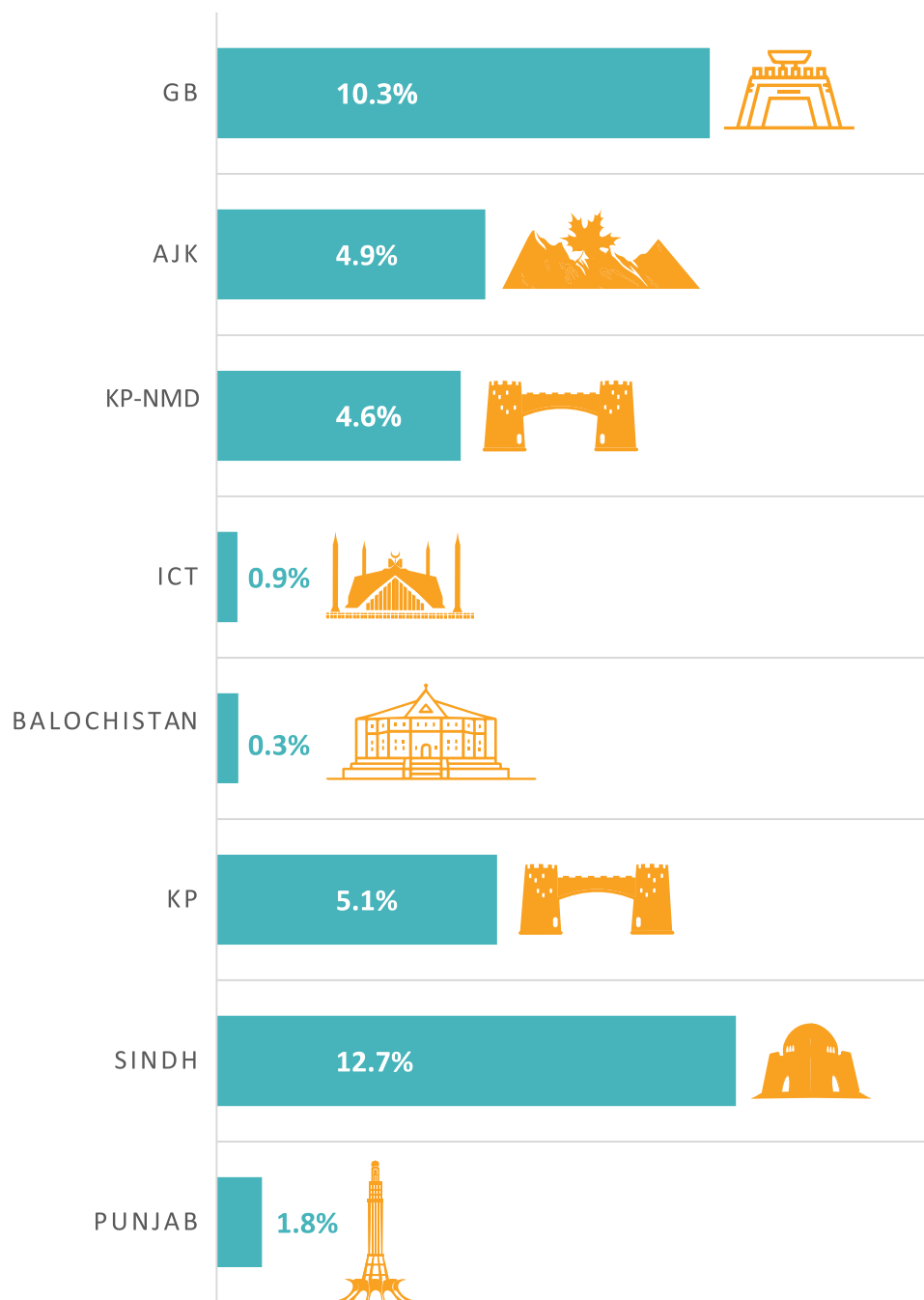
URBAN



RURAL



### Population Covered under Social Protection by Province/Region



## ACRONYMS

AJK	Azad Jammu and Kashmir
GB	Gilgit-Baltistan
HH	Household
ICT	Islamabad Capital Territory
IYCF	Infant and young child feeding
KP	Khyber Pakhtunkhwa
KP-NMD	KP Newly Merged Districts
NNS	National Nutrition Survey
PSU	Primary sampling unit
WRA	Women of reproductive age





