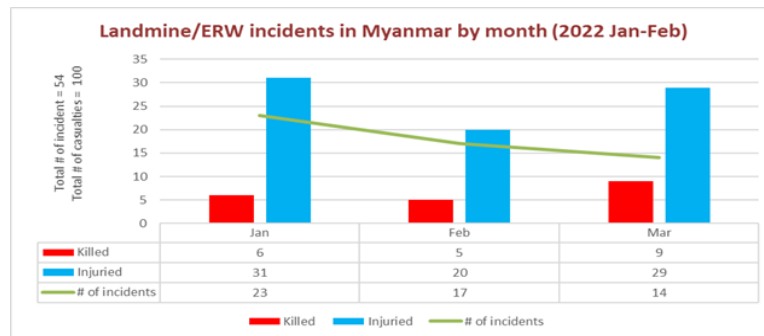


# Landmines / ERW Incidents Information (2022)

## Overview of incidents and casualties nationwide in 2022 (January-March)

Total incidents		54		
Total Victims		Killed	Injured	Total
		20	80	100
Adult	Total Adult	11	52	63
	Male	10	37	47
	Female	1	15	16
Child	Total Child	9	28	37
	Male	8	18	26
	Female	1	10	11

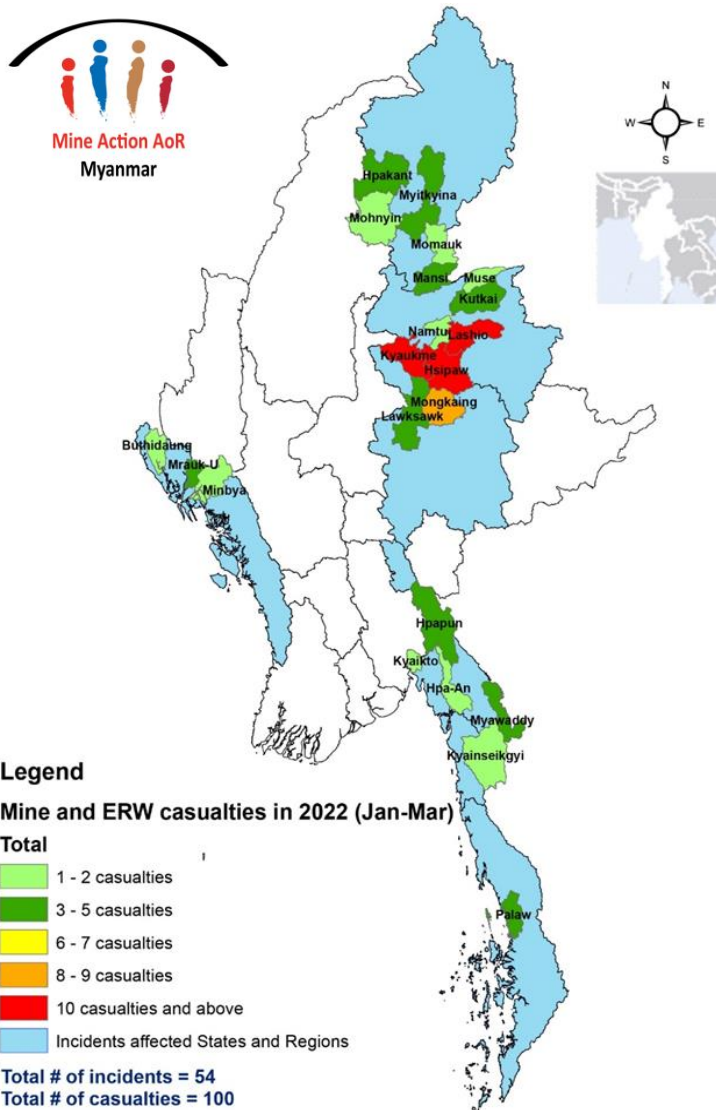


## Focus on the States most affected by landmines/ERW in 2022

### Shan State (67% of total casualties)

Total incidents		34		
Total Victims		Killed	Injured	Total
		13	54	67
Adult	Total Adult	6	36	42
	Male	6	25	31
	Female	0	11	11
Child	Total Child	7	18	25
	Male	6	10	16
	Female	1	8	9

### Incidents affected States/Regions and Townships in 2022



### Kachin State (12% of total casualties)

Total incidents		7		
Total Victims		Killed	Injured	Total
		1	11	12
Adult	Total Adult	1	9	10
	Male	1	6	7
	Female	0	3	3
Child	Total Child	0	2	2
	Male	0	1	1
	Female	0	1	1

### Rakhine State (8% of total casualties)

Total incidents		4		
Total Victims		Killed	Injured	Total
		2	6	8
Adult	Total Adult	2	1	3
	Male	2	1	3
	Female	0	0	0
Child	Total Child	0	5	5
	Male	0	5	5
	Female	0	0	0

9 other incidents resulting in 13 casualties (13% of total casualties) were also documented in Kayin, Mon and Tanintharyi during the reporting period. There were many explosions and casualties targeted to local administrations and security forces across the country which were not included in this report.

For more information on Mine Action, contact Kim Warren ([kiwarren@unicef.org](mailto:kiwarren@unicef.org)) and Kyaw Win Oo ([kwooo@unicef.org](mailto:kwooo@unicef.org)) at UNICEF.