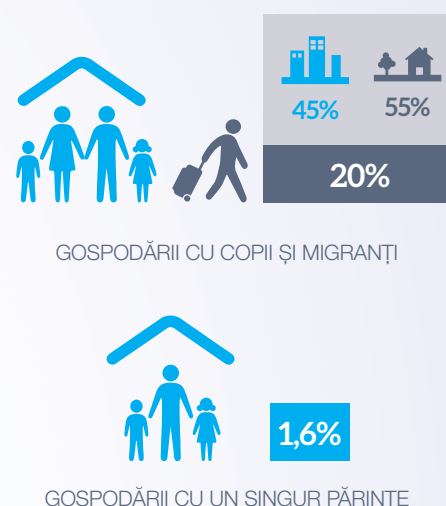
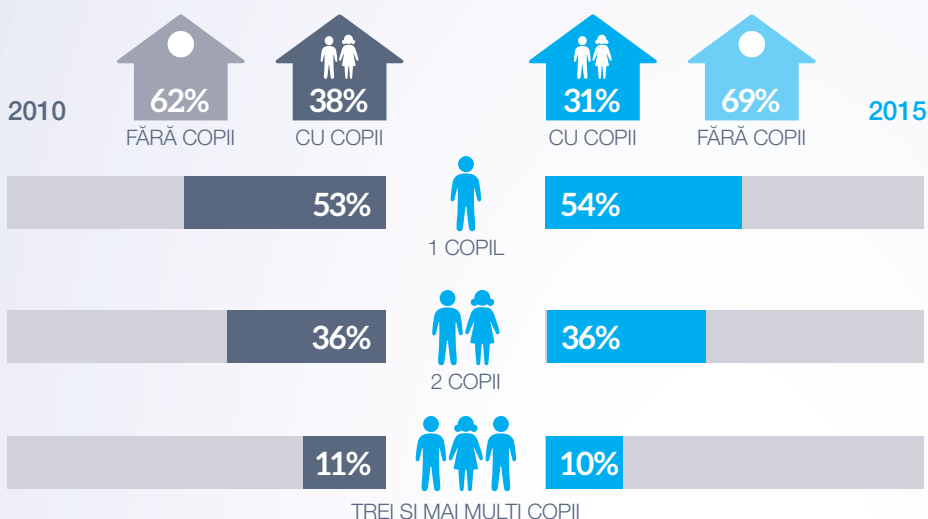




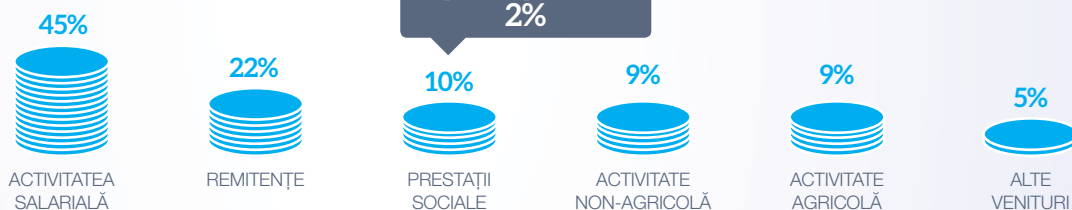
# Familia și copilul

## Principalele caracteristici ale gospodăriilor cu copii



## Veniturile gospodăriilor cu copii în 2015

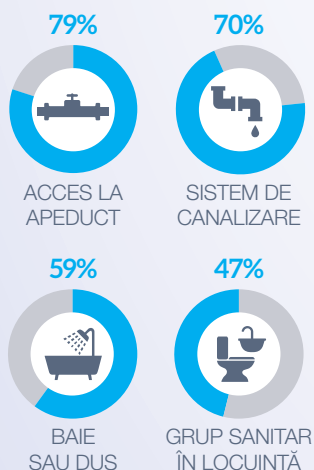
Veniturile disponibile pe o persoană din cadrul gospodăriilor cu copii a constituit **1713,5 lei** (lunar)



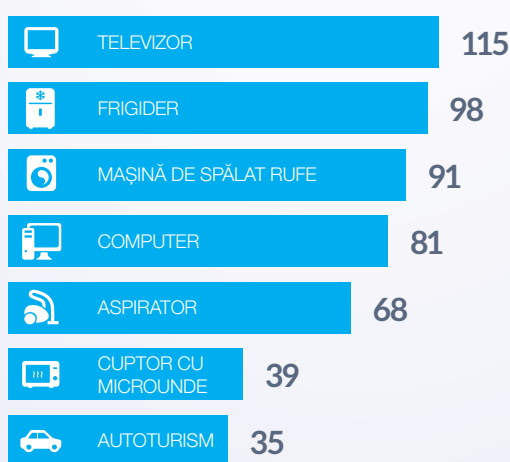
## Nivelul de dotare a gospodăriilor cu copii în 2015

În ultimii ani s-a îmbunătățit situația privind dotarea locuințelor cu principalele utilități și bunuri de folosință durabilă.

### UTILITĂȚI



### BUNURI DE FOLOSINȚĂ DURABILĂ bucăți la 100 gospodării cu copii



## Rația alimentară în 2015

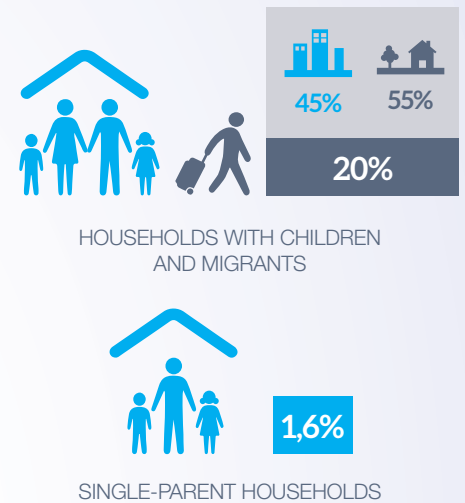
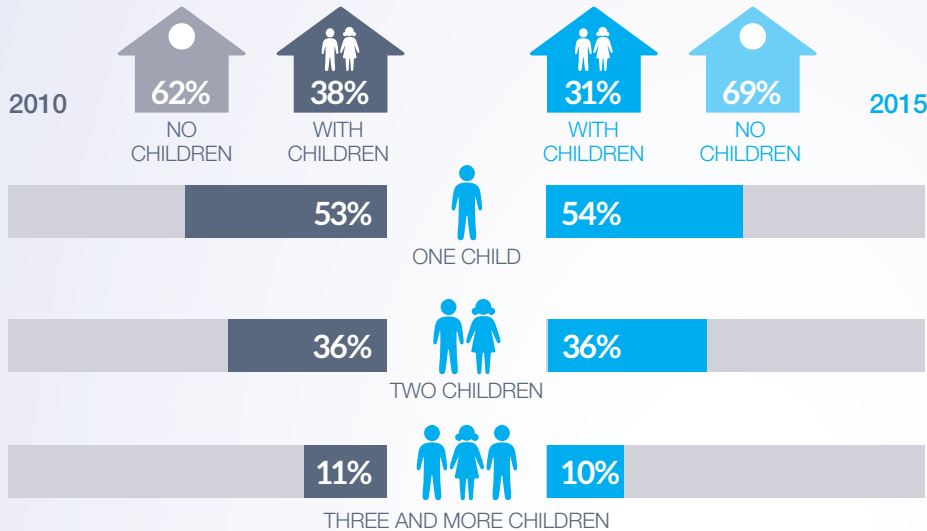
lunar, pentru o persoană





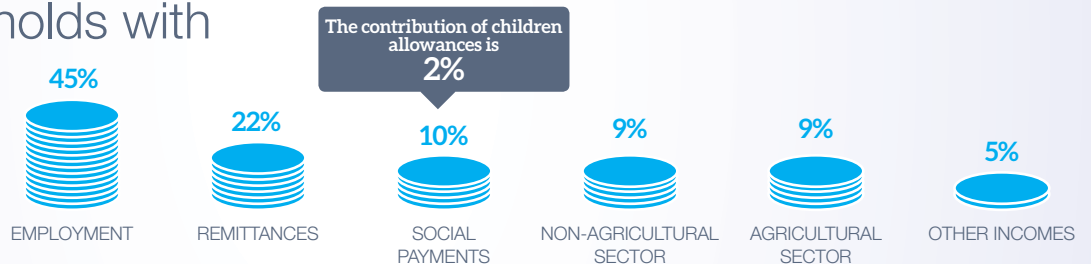
# Family and child

## Main characteristics of households with children



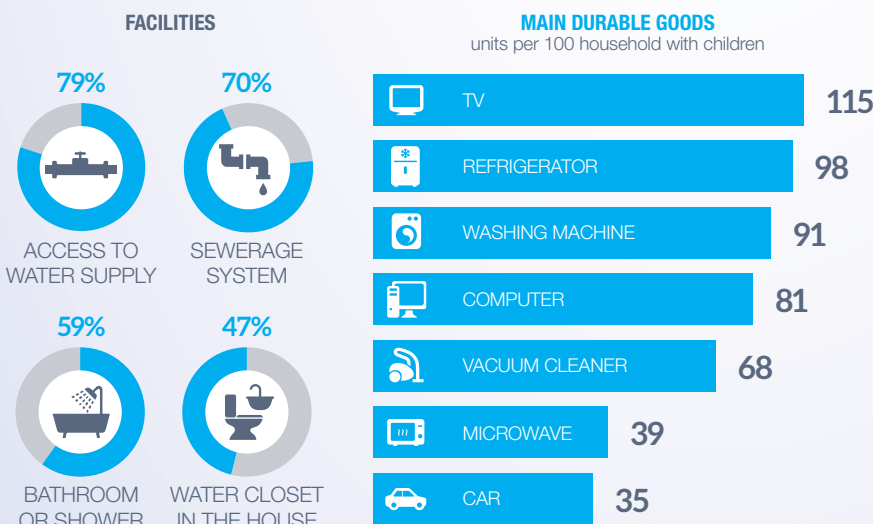
## Income of households with children in 2015

The disposable income per person, in the households with children, was **1713,5 MDL** monthly



## Level of equipment of households with children in 2015

During the last years, the situation on household equipment with the main facilities and the main durable goods improved.



## Food ratio in 2015

monthly per one person

