

THE SITUATION OF CHILDREN IN LEBANON

COUNTRY FACTSHEET: DECEMBER 2024

Factsheet on the situation of Children in Lebanon

Data Factsheet – December 2024

Prepared by UNICEF Middle East and North Africa Regional Office

This country factsheet provides a snapshot of the situation of children, adolescents and youth in Lebanon, aligned with the Convention on the Rights of the Child and relevant child-related Sustainable Development Goals (SDGs).

The factsheet gives an overview of the most recent child-related statistics, drawing on internationally comparable indicators available through global databases. Indicators have been chosen based on the availability of historical data from 2010 and geographic coverage, with priority to Sustainable Development Goal (SDG) indicators.

Contents:

- (1) Demographic and Economic Overview
- (2) Right to health and healthcare
- (3) Right to proper nutrition
- (4) Right to education
- (5) Right to be protected
- (6) Right to an equitable chance in life
- (7) Right to a clean and safe environment

HIGHLIGHTS

- Lebanon is a **lower-middle income** economy. The GDP per capita has reached **1%** in 2022 following an **unprecedented 20% decrease** in 2020.
- In 2023, children represented a **third of the population** in 2023. Refugees and asylum seekers represented about **14 %** of the total population with **more than half** of them being children.
- The country has made **limited progress** in terms of reducing child mortality, achieving only a **15% reduction** in U5 mortality rates between 2000 and 2022.
- **Only about half of the children** had received 3 doses of the DTP vaccine and 2 doses of measles vaccine in 2023 (**respectively 55% and 53%**).
- The percentage of **zero-dose children** who had not received any doses of the DTP vaccine increased remarkably from **5% to 22% over the last decade**.
- Almost a **quarter of the youth** aged 15-24 were not in employment, education or training in 2019, with females disproportionately affected
- **Over half (57%)** of the children (1-14) experienced some form of violent discipline, as of 2016.
- About **one-fifth** of the population was covered by at least one social protection benefit in 2022.
- The level of water stress was **medium** and the children's climate risk index was classified as **low-medium** in 2020.

Disclaimer

Links to non-UNICEF sites do not imply endorsement by UNICEF of the accuracy of the information contained therein or of the views expressed. The statements in this publication are the views of the author(s) and do not necessarily reflect the policies or the views of UNICEF. The designations in this publication do not imply an opinion on the legal status of any country or territory, or of its authorities.



Demography and Economy

Demography

% of the population 2023

Children (0-4 years)	7.8
Children (0-17 years)	32.2
Adolescents (10-19 years)	18.7

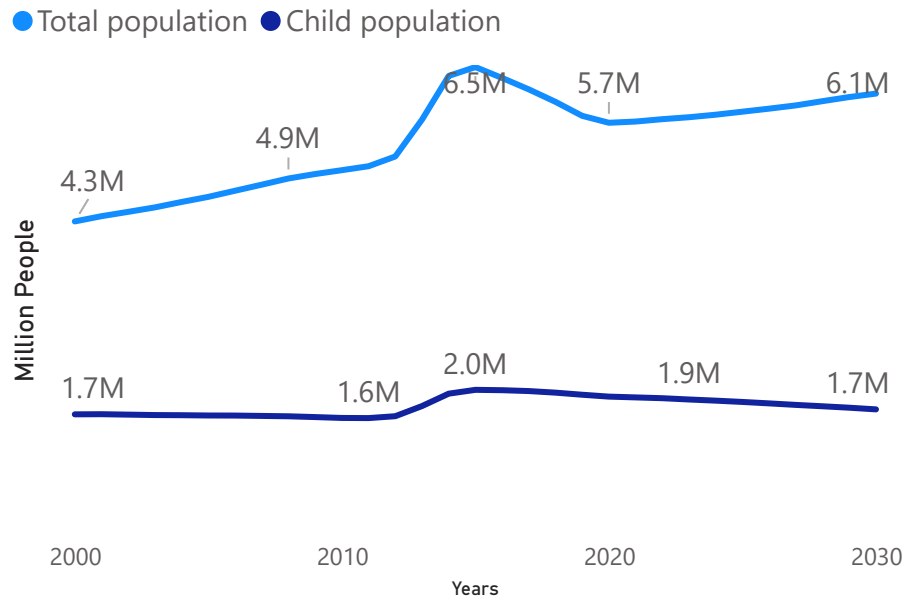
Number of births per year (in thousands) 2023

Number of births	93
------------------	----

Average number of children per woman over the childbearing years 2023

Total fertility rate	2.2
----------------------	-----

Population Trends and Projections (2000-2030)



Total population 2023

2023

6M

Child population 2023

2023

2M

Population growth rate (annual % change)

2023

0.4

Urban population (%)

2023

89.4

Refugees & asylum seekers (% of total population)

2023

13.7

% of children (0-17) years amongst refugee population

2023

54.0

% of children (2-17) years with functional difficulties

No Data

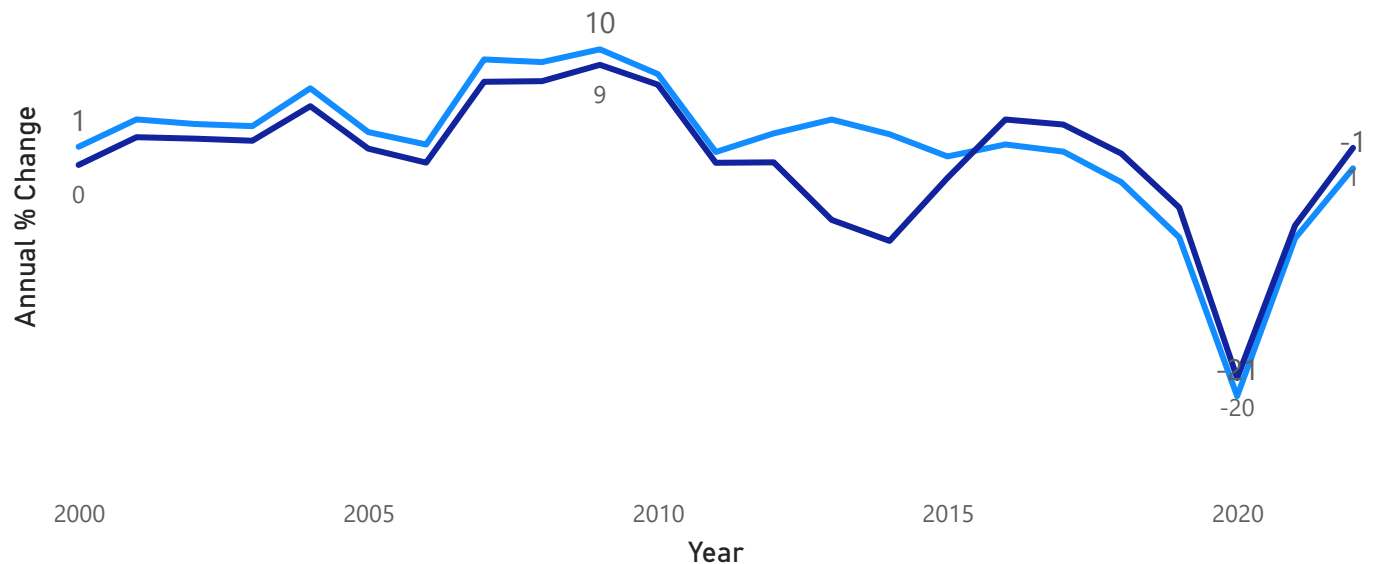
Economy

World Bank 2023/2024 Income classification

Lower middle income

Annual GDP and GDP per Capita Growth (2000-2023)

● GDP growth (annual %) ● GDP per capita growth (annual %)



Indicator 2022

GDP per capita (current US\$)	3823.9
-------------------------------	--------

Indicator 2023

Inflation, consumer prices (annual %)	221.3
---------------------------------------	-------



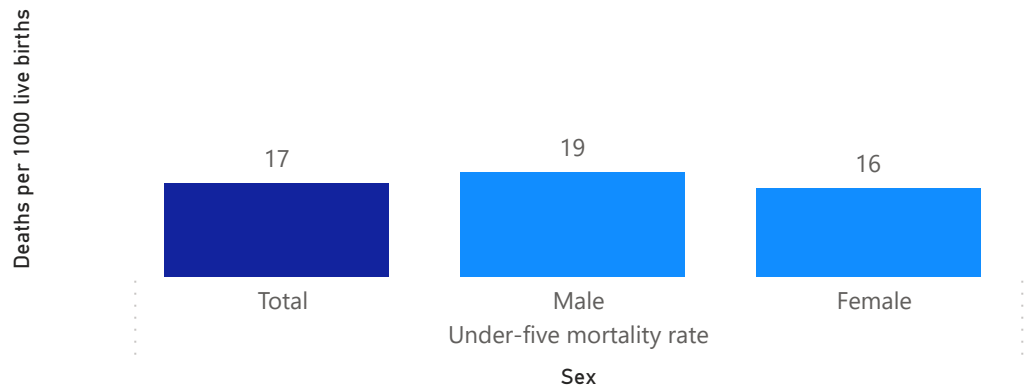
Child Mortality

Mortality rates (deaths per 1,000 live births)	2000	2022
Neonatal mortality rate	12	10
Infant mortality rate	17	15
Under-five mortality rate	20	17

Under-five deaths
2022

1461

Inequalities in Under 5 Mortality Rate 2022

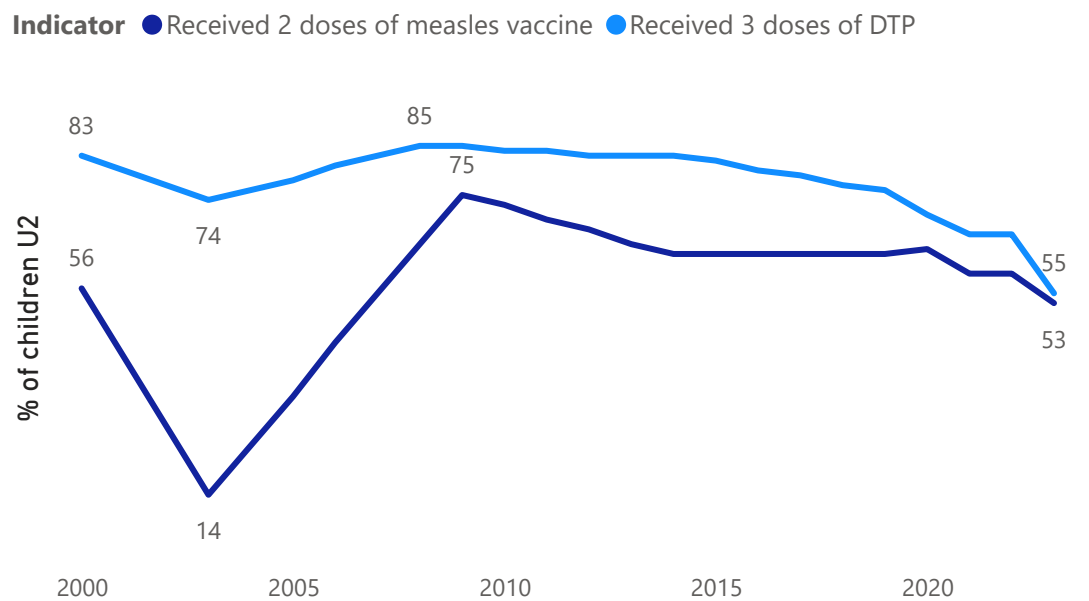


Maternal and Child Health

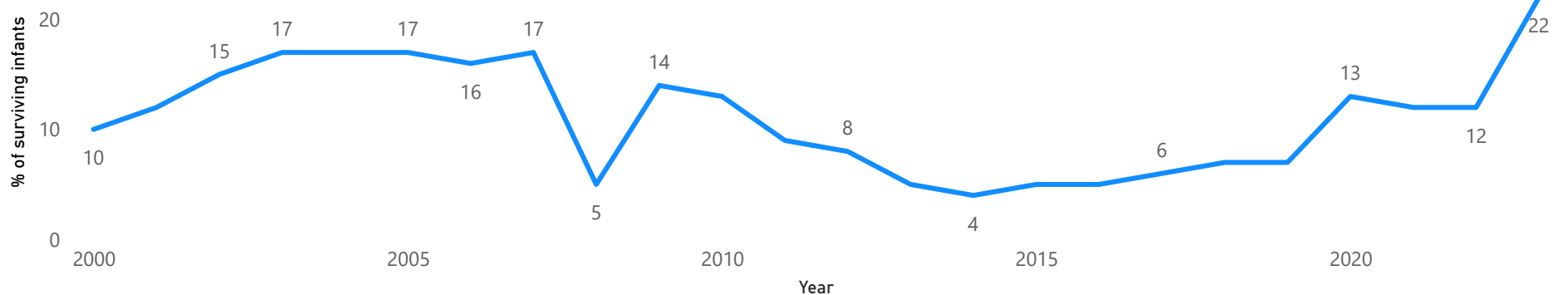
Health care and services (% of women, 15-49 years, with a live birth in the last 2 years)	Year
Antenatal care 4+ visits	No Data
Institutional deliveries	No Data
Skilled birth attendant	No Data

Immunization (% of children, 0-2 years)	2023
Received 1st dose of DTP	78
Received 2 doses of measles vaccine	53
Received 3 doses of DTP	55

Trends in Children's immunization rates



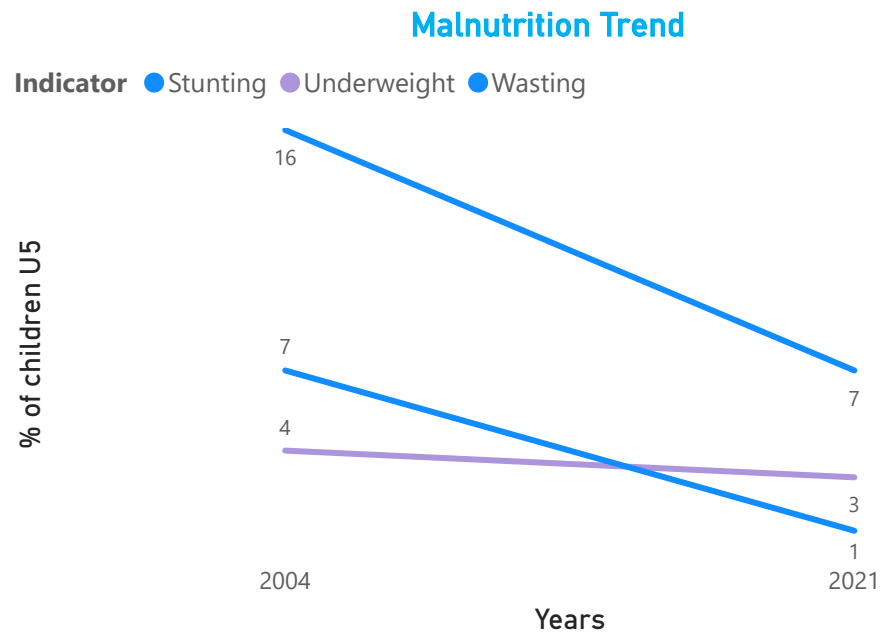
Zero-dose Children (No Vaccination for DTP1)



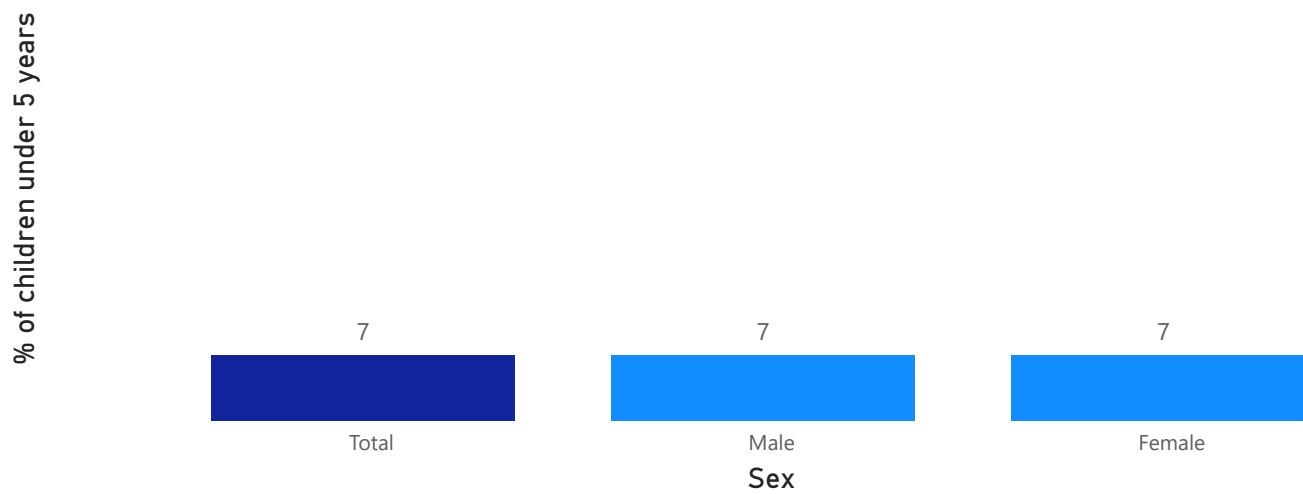


Nutrition

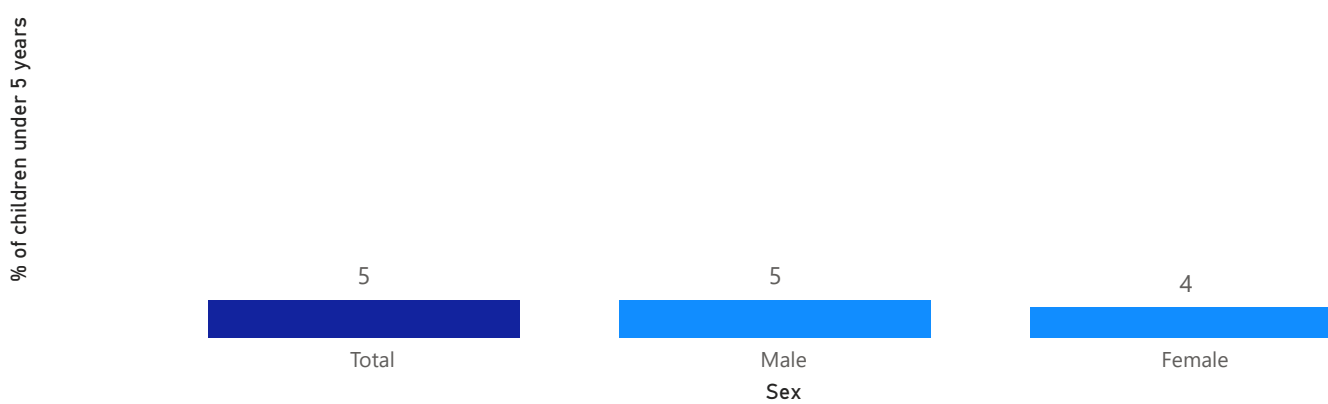
Malnutrition (% of children, under 5 years)	2021
Overweight	5
Stunting	7
Underweight	3
Wasting	1



Inequalities in Stunting 2021



Overweight Inequalities 2021





Education, Training and Employment

School net attendance by education level (% of children of the relevant age group)	Year
Pre-Primary	No Data
Primary	No Data
Lower Secondary	No Data
Upper Secondary	No Data

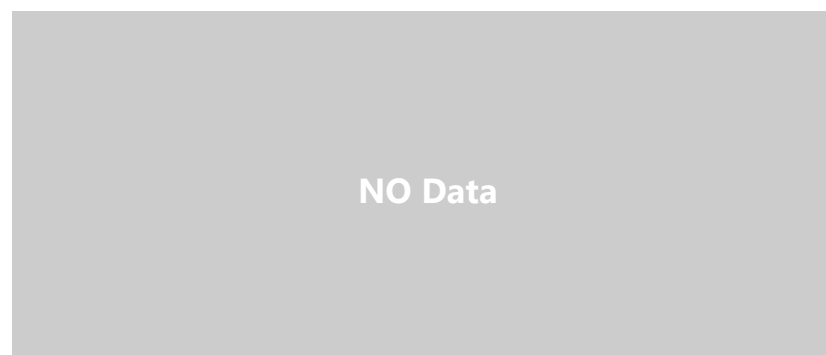
School completion by education level (% of children of the relevant age groups)	Year
Primary	No Data
Lower Secondary	No Data
Upper Secondary	No Data

Out-of-school children by educational level (% of children of the relevant age groups)	Year
Primary	No Data
Lower Secondary	No Data
Upper Secondary	No Data

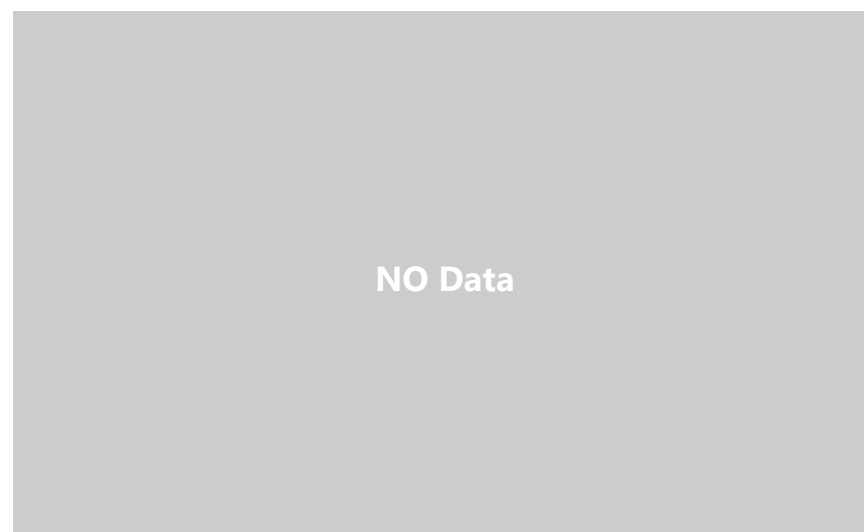
Reading/ Math proficiency	2019
Proportion of students at the end of primary achieving at least a minimum proficiency level in mathematics	27
Proportion of students at the end of primary achieving at least a minimum proficiency level in reading	No Data

Share of youth not in employment, education or training (NEET) by sex	2019
Total	24
Male	18
Female	29

School Completion Rates by sex



Inequalities in Out of School Children of Upper-Secondary School Aged Children



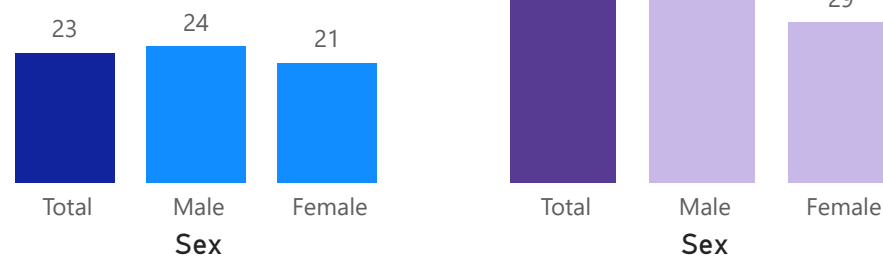
Unemployment rates in Youth (15-24 years)

2019

Labor Force Participation in Youth (15-24 years)

2019

% of youth



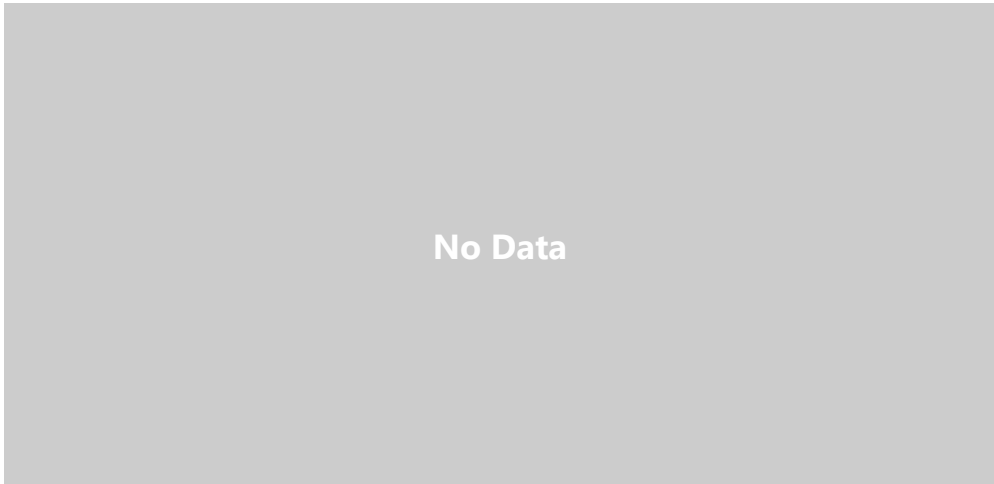


Violence

Inequalities in Violent Child Discipline

Violent child discipline (% of children aged 1-14 years) 2016

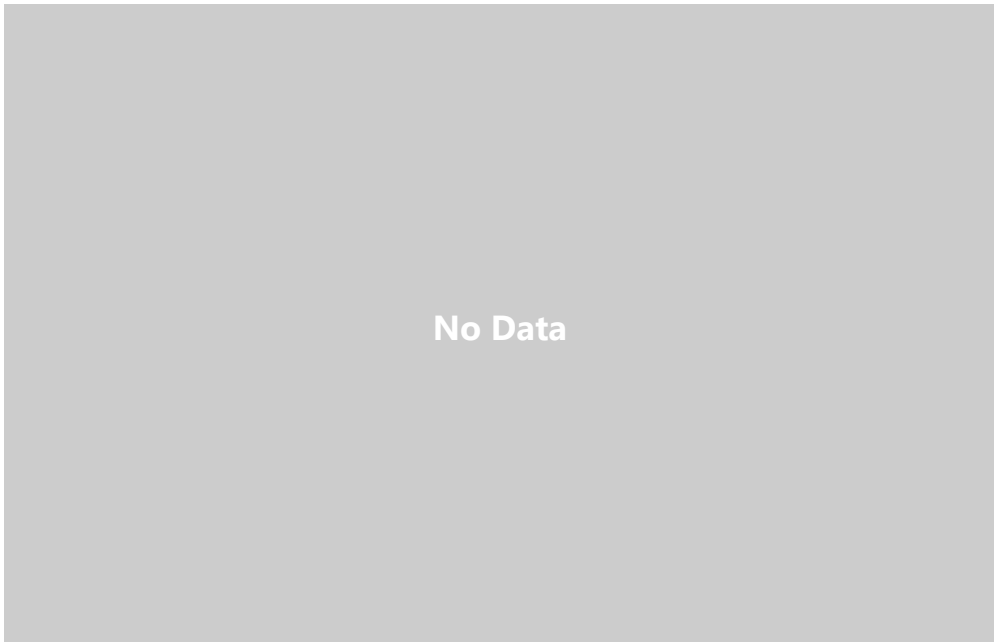
Violent Child Discipline	
Total	57
Male	60
Female	54



Inequalities in Child Marriage before 18

Child marriage (% of women aged 20-24 years) 2016

Married before 15	1
Married before 18	6



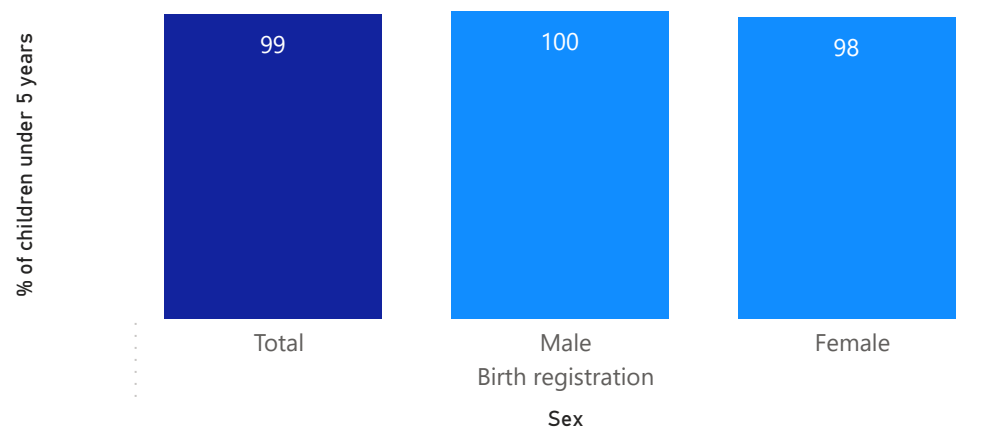
Child labour (% of children aged 5-17 years) Year

Child labour	No Data
--------------	---------

Birth Registration

Inequalities in Birth Registration

2016



Birth registration (% of children under 5 years) 2016

Birth registration	
Total	99
Male	100
Female	98



Right to equitable chance in life

Poverty

Monetary poverty 2020
 Children (0-17) living in households with income below the national poverty line (% of all children) 32.4

Children (0-17) living below \$2.15 poverty line (extreme poverty) (% of all children)	Children (0-17) living below \$3.65 poverty line (% of all children)	Children (0-17) living below \$6.85 poverty line (% of all children)
No Data	0.9	11.1

Child multidimensional poverty headcount ratio

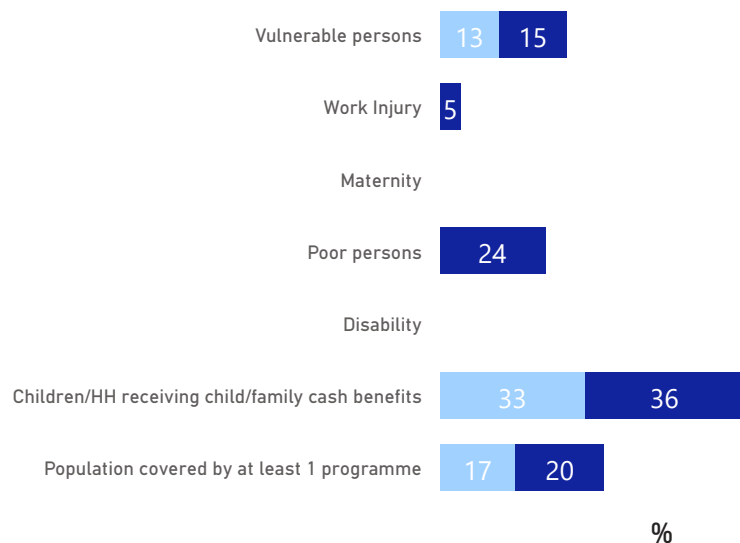
No Data

Dimensions of Multidimensional Poverty	Water	Household does not have piped water into dwelling or yard
	Sanitation	Unimproved toilet facility Shared toilet
	Housing	Primitive floor/Type of Household Overcrowding (more than 3 people per room)
	Health	Unskilled birth assistance (0-23 months) Not fully immunized (12-59 months) No antenatal care (0-23 months)
	Nutrition	Infant and Young Child Feeding (0-23 months)
		Wasting (0-4 years)
		Stunting (24 <months) Obesity (24 <months)
	Education	Not enrolled in school Two or more grades behind school/did not
	Information	No access to any information or communication device

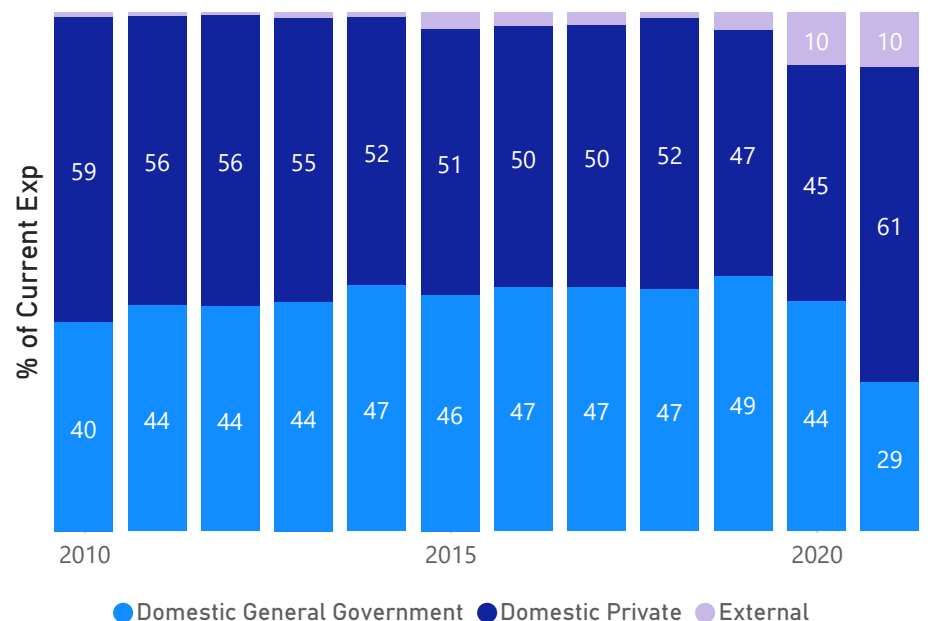
Public Expenditure on Essential services

Social Protection Coverage by Function

Time period ● 2019 ● 2022



Changes in the Composition of Domestic Health Expenditure



Government expenditure on health % of GDP
2018

4.2

Government expenditure on education % of GDP
2019

2.6

Government expenditure on social protection % of GDP
2018

6.2



Right to a clean and safe environment

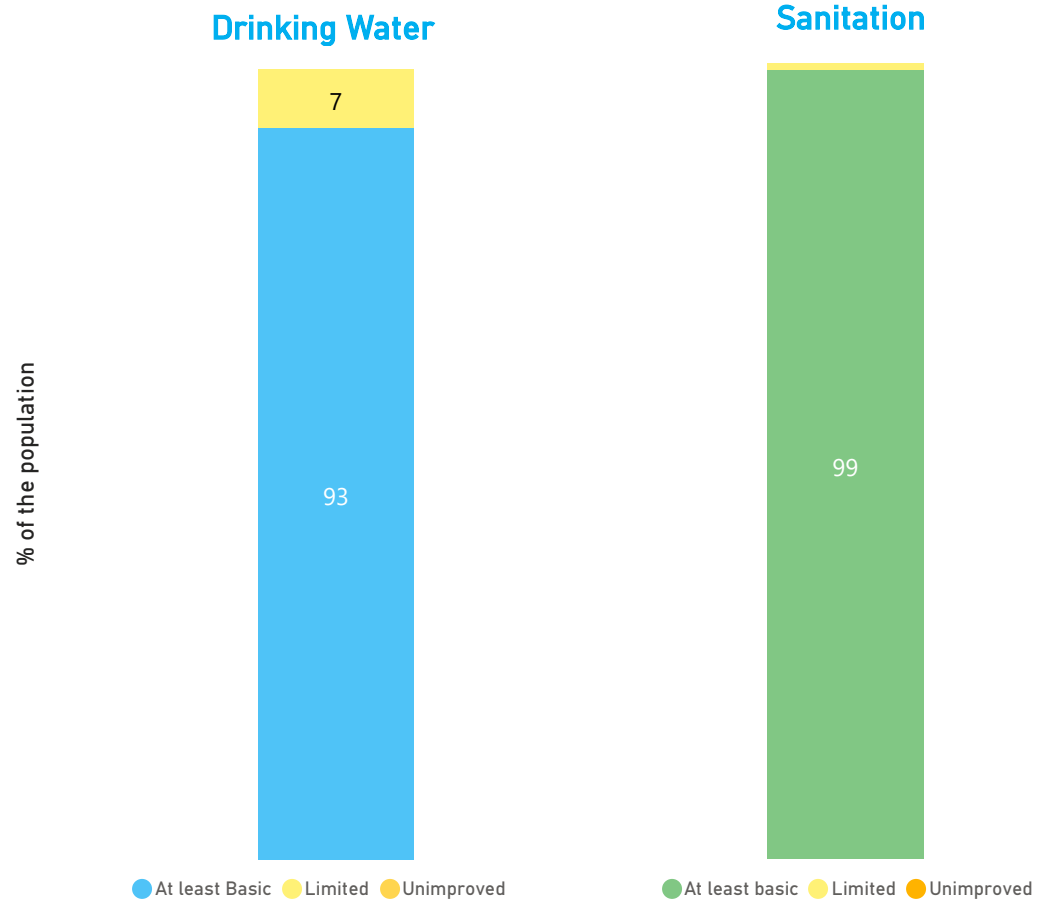
Water, Sanitation and Hygiene

Household drinking water, sanitation and hygiene

2022

Household coverage (%)	2022
At least basic drinking water	93
At least basic sanitation	99

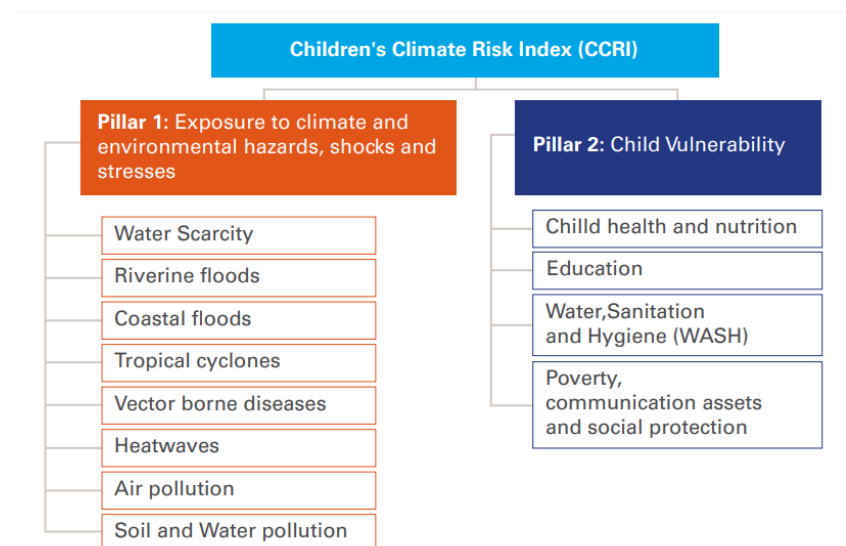
School coverage (%)	2021
Basic drinking water	59
Basic hygiene (availability of water and soap)	36
Basic sanitation	93



Water Vulnerability and Climate

Indicator	2020
Water Stress	Medium

Indicator	2020
Climate and environmental shocks	Medium-High
Child vulnerability	Low-Medium
Children's Climate and Environment Risk Index	Low-Medium



*The CCRI is a composite index which brings together geographical data by analyzing: 1) exposure to climate and environmental hazards, shocks and stresses; and 2) child vulnerability.

Child-related SDG indicators

The 2030 Agenda includes 17 Global Goals addressing the social, economic and environmental dimensions of sustainable development. To chart and track how ambitious and how realistic country targets are, UNICEF created quantifiable country-level brief benchmarks for child-related indicators for which data are available to measure and monitor child rights on a common scale.

These country briefs leverage UNICEF's extensive analysis of 48 child-related Sustainable Development Goal (SDG) indicators, structured around five fundamental domains of child well-being: Survive and Thrive, Learning, Protection from Harm, Safe and Clean Environment, and Life Free from Poverty. The analysis offers a detailed, multifaceted perspective on the state of children's rights and experiences across the globe.

Availability of data on child wellbeing monitoring: Lebanon has data on 26 of the 48 child related SDGs (54% availability).

For further information on the countries' benchmarking briefs, please visit [Progress on Children's Well-being: Country Briefs - UNICEF DATA](#)

Data Sources

Demography

- UN Population Division, [World Population Prospects 2024](#).
- UNHCR [Refugee Population Statistics database](#)
- Internal Displacement Monitoring Centre (IDMC), [Global Internal Displacement Database \(GIDD\)](#)

Economy: The World Bank Data Portal, [World Development Indicators](#).

Mortality: UN Inter-agency group for child mortality estimations ([UN IGME](#)).

Maternal and Child Health: WHO/UNICEF [estimates of national immunization coverage](#).

Nutrition: UNICEF/WHO/The World Bank [Joint Malnutrition Estimates \(JME\)](#). Country survey estimates.

Education, Training and Employment :

- National Household Surveys estimates for education data. [UNICEF MENA data warehouse](#)
- International Labor Organization (ILO). [ILOSTAT](#)
- UNESCO Institute for Statistics ([UIS](#)) and National Household Surveys estimates.

Violence: [UNICEF data warehouse](#), based on household surveys.

Poverty

- The World Bank & UNICEF (2023). [Global Trends in Child Monetary Poverty According to International Poverty Lines](#).
- ESCWA, UNICEF, UNDP and OPHI. (2023). [Second Arab Multidimensional Poverty Report](#).

Public expenditure on essential services

- [ILOSTAT](#) for social protection data
- [WHO Global Health Expenditure Database](#)
- The UNESCO Institute for Statistics ([UIS](#)) for education expenditure data

Water, Sanitation and Hygiene

- WHO/UNICEF [Joint Monitoring Programme for Water, Supply, Sanitation and Hygiene \(2000-2022\)](#).
- Water Stress Data: [AQUASTAT](#)
- UNICEF [Children's Climate Risk Index](#)

Most of the indicators are available at [UNICEF MENA data warehouse](#)

For more information please visit
UNICEF data (data.unicef.org) or contact:

Salim Oweis | Communication Officer | Tel: +962-79-936-5212 | Email: soweis@unicef.org
Robert Bain | Monitoring Specialist | Tel: +962-79-281-7624 | Email: rbain@unicef.org
Meral Marouf | Data Research Specialist | Tel: +962-77-971-1628 | Email: mmarouf@unicef.org