



A child receives a polio vaccination in Ademour, eastern Chad, near the Sudanese border, in April 2025. UNICEF vaccinates refugee, displaced, host and returnee children within the national campaign.

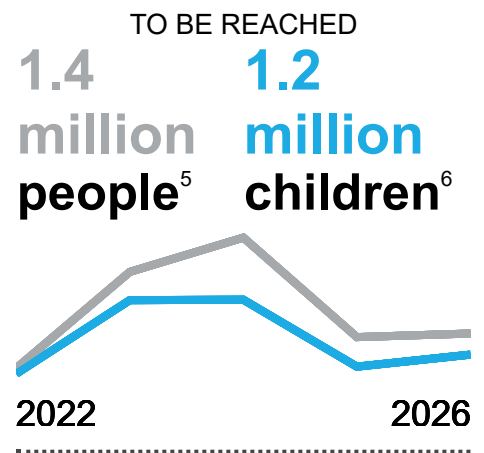
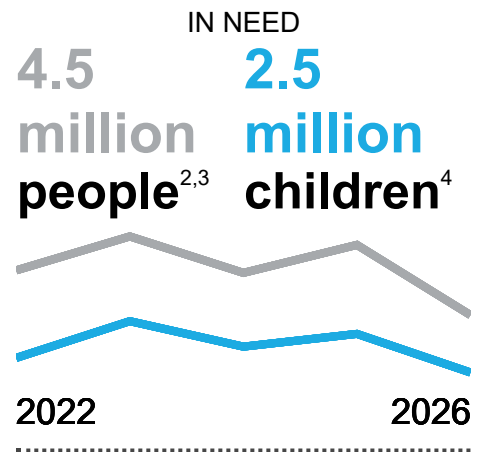
unicef 
for every child

Humanitarian Action for Children

Chad

HIGHLIGHTS

- In Chad, chronic and acute crises – conflict, forced displacement, food insecurity, malnutrition and health emergencies – continue to impede the realization of children’s rights. At the same time, the crisis in the Sudan is further straining Chad’s fragile systems and heightening urgent humanitarian needs.
- For 2026, the inter-agency prioritization exercise identified 4.5 million people in 53 departments with severe needs in multiple programmatic areas. UNICEF will focus its action on the most affected geographic areas, where 2.7 million people face severity level 3 conditions and 1.9 million face level 4 conditions.¹
- In these high-severity areas, UNICEF will provide integrated, multisectoral support covering health, nutrition, WASH, education, social protection and child protection needs. The strategy also prioritizes strengthening local systems and transferring key capacities to government institutions.
- To deliver life-saving assistance to 1.4 million people, including 1.2 million children, UNICEF is appealing for \$111.2 million. More than half of this funding – \$61.6 million – will address needs related to the Sudanese refugee crisis. Timely support is critical to prevent further deterioration and ensure equitable, impactful humanitarian action.



KEY PLANNED TARGETS



900,000

children vaccinated against measles, supplemental dose



457,549

children with severe wasting admitted for treatment



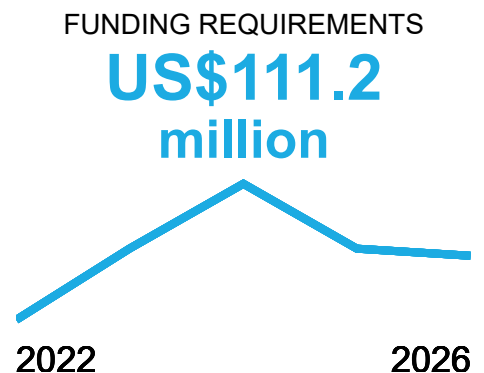
98,000

children/caregivers accessing community-based mental health and psychosocial support



117,420

children accessing formal or non-formal education, including early learning



HUMANITARIAN SITUATION AND NEEDS

Chad faces one of the most complex humanitarian crises in the Sahel. Climate shocks, regional conflict, large-scale displacement and overstretched health services weakened by recurrent epidemics mean that, in 2026, 4.5 million people – including 2.5 million children – will require humanitarian assistance. Of the 4.5 million people identified as in need, the 2026 Humanitarian Needs and Response Plan targets 3.4 million (38 per cent fewer than in 2025) to focus limited resources on the most severe needs. Among these individuals, 1.9 million people – all people in need in areas with intersectoral severity 4 – are considered absolute priorities.⁷

Chad hosts 1.5 million refugees, 424,661 returnees and 225,689 internally displaced persons. Children, increasingly exposed to gender-based violence and family separation, remain at the centre of the country's crisis.⁸ The crisis in the Sudan has further strained Chad's fragile systems. In 2026, Chad is hosting 910,740 Sudanese refugees (61 per cent children) and 344,399 returnees (67 per cent children) who have entered through Ouaddaï, Sila, Wadi Fira, and Ennedi Est. This has put pressure on social cohesion, services and natural resources in refugee-hosting areas.⁹

Chad remains in a nutrition emergency, with global acute malnutrition rates above alert levels in 14 provinces and severe wasting exceeding the 2 per cent emergency threshold in 10 provinces. Children aged 6–23 months are most affected. In 2026, 1,508,751 children under age 5 will face either severe wasting (338,488 children) or moderate wasting (1,170,263 children). This, combined with another 174,111 pregnant or breastfeeding women, means that nearly 2 million people will require nutrition support. The nutrition crisis persists as humanitarian, climatic and structural pressures continue to compound one another.¹⁰

In 2026, 1,706,766 people, including 938,721 children, will require essential health services. Recurrent epidemics pose severe risks. There were 517 meningitis cases, 5,456 diphtheria cases and 2,914 cholera cases reported in 2025. Persistently low vaccination coverage, insecurity, isolation and population movements continue to hinder immunization efforts.¹¹

Education in Chad is severely disrupted, with 1.4 million school-aged children requiring education support due to displacement, overcrowded classrooms and insufficient teachers and resources.¹²

Chad, the second most climate-vulnerable country for children in the world, faces recurrent floods and droughts that have destroyed homes, contaminated water sources and impeded humanitarian access. Protection incidents numbered 10,185 in 2025, compared with 5,662 in 2024.¹³ Intercommunal violence displaced more than 12,500 people in early 2025, and armed non-state actors continue to threaten communities in Lac Province. In 2026, 254,200 children will require protection assistance in the most affected regions.

Humanitarian access has been hampered by insecurity, violence and seasonal flooding, particularly in southern and eastern provinces.

The overlapping crises in Chad demand urgent, flexible funding, which will enable UNICEF and partners to deliver essential health, nutrition, WASH, education and protection services to vulnerable children and families.

SECTOR NEEDS



1.7 million
people in need of
health assistance¹⁴



2.1 million
people in need of
nutrition assistance¹⁵



254,200
children in need of
protection
assistance¹⁶



1.4 million
children in need of
education support¹⁷



2.9 million
people lack access to
safe water¹⁸

STORY FROM THE FIELD



As if the staggering influx of more than 975,000 Sudanese refugees and Chadian returnees over the past two years of conflict weren't enough, the humanitarian crisis in eastern Chad is worsening. Conditions are rapidly deteriorating into full catastrophe.

Since the surge of violence in the Sudan in late April 2025, thousands of families have crossed the border into Chad each day. They are traumatized and burdened with the scars of war. Most are women and children, fleeing intense fighting in El Fasher, North Darfur State. This massive wave of displacement has further strained the already difficult humanitarian situation in Chad.

[Read more about this story here](#)

Children who, with their families, have fled violent clashes in the Sudan sit with their belongings Tiné, eastern Chad, in May 2025.

HUMANITARIAN STRATEGY

This Humanitarian Action for Children appeal is anchored in the Core Commitments for Children in Humanitarian Action and aligned with the 2026 Humanitarian Needs and Response Plan. It reflects UNICEF's vision for streamlined, nationally led humanitarian planning. Within this framework, UNICEF's strategy in Chad focuses on the most critical hotspots identified in the Humanitarian Needs and Response Plan, while retaining flexibility to address localized emergencies. Guided by the principle of no one left behind, UNICEF aims to deliver timely, equitable and inclusive assistance.

UNICEF will adopt a multisectoral, integrated life-saving approach that is disability-inclusive, gender-responsive and climate-resilient. A key priority will be supporting national vaccination campaigns for epidemic-prone and vaccine-preventable diseases, while strengthening preparedness, surveillance and response systems at national and decentralized levels.

As the country's sole supplier of ready-to-use therapeutic food, UNICEF will ensure continuity of treatment and prevention of severe wasting. At the same time, UNICEF will reinforce government capacity for supply chain management, logistics and quality assurance to strengthen long-term national ownership and reduce risks of aid diversion.

UNICEF will support government-led child protection systems by strengthening capacities in case management and in preventing and responding to gender-based violence and grave violations of children's rights. UNICEF will support efforts around protection from sexual exploitation and abuse.

UNICEF will ensure access to safe water, sanitation and hygiene services for affected populations. The organization will reinforce national institutions' capacities to sustainably operate WASH systems and help to strengthen their emergency preparedness.

In education, UNICEF will promote inclusive access to formal and non-formal learning and support relevant ministries to improve planning, teacher deployment and emergency coordination, enabling a transition towards stronger government leadership.

UNICEF's approach to accountability to affected populations prioritizes government-led feedback and complaint mechanisms whilst promoting accessible, interoperable channels integrated into national systems.

Preparedness and response will be reinforced through pre-positioning of supplies, anticipatory action, humanitarian cash transfers and community-based mechanisms. There will be a strong focus on developing national emergency management capacities, supported by an enhanced field presence for both UNICEF and government partners to ensure rapid, localized, and context-specific interventions.

Localization remains a central principle, and UNICEF will invest in government institutions and civil society organizations to strengthen sustainable national leadership.

UNICEF will operationalize the humanitarian–development–peace nexus to reduce risks, build resilience and ensure emergency interventions reinforce government-led systems strengthening.

Finally, UNICEF will continue supporting coordination across the Education, Nutrition and WASH clusters and child protection matters under the Protection Cluster, and contribute to coordination structures for the Sudanese refugee response in eastern Chad, led by the Office of the United Nations High Commissioner for Refugees.

Progress against the latest programme targets is available in the humanitarian situation reports: <https://www.unicef.org/appeals/chad/situation-reports>

This appeal is aligned with the revised Core Commitments for Children in Humanitarian Action, which are based on global standards and norms for humanitarian action.

2026 PROGRAMME TARGETS



Health and HIV/AIDS¹⁹

- 900,000 children vaccinated against measles, supplemental dose



Nutrition

- 790,594 children 6-59 months screened for wasting
- 457,549 children 6-59 months with severe wasting admitted for treatment²⁰
- 262,030 primary caregivers of children 0-23 months receiving infant and young child feeding counselling



Child protection and GBViE

- 98,000 children, adolescents and caregivers accessing community-based mental health and psychosocial support
- 103,500 women, girls and boys accessing gender-based violence risk mitigation, prevention and/or response interventions
- 3,200 children who have received individual case management



Education

- 117,420 children accessing formal or non-formal education, including early learning
- 352,260 children receiving individual learning materials²¹



Water, sanitation and hygiene

- 340,000 people accessing a sufficient quantity and quality of water for drinking and domestic needs²²
- 280,000 people accessing appropriate sanitation services²³
- 340,000 people reached with critical WASH supplies²⁴



Social protection

- 10,000 households benefitting from social assistance from government funded programmes with UNICEF technical assistance



Cross-sectoral (HCT, SBC, RCCE and AAP)

- 14,200 households reached with UNICEF-funded humanitarian cash transfers (including for social protection and other sectors)
- 1,200,000 people reached with timely and life-saving information on how and where to access available services
- 700,000 people engaged in reflective dialogue through social media and digital platforms
- 484,171 people sharing their concerns and asking questions through established feedback mechanisms



NFI

Non-food items

- 46,000 displaced people who received non food items²⁵



Cross-sectoral (AAP, SBC, and PSEA)

- 2,000 households reached with UNICEF-funded humanitarian cash transfers (including for social protection and other sectors)
- 46,560 people engaged in reflective dialogue through community platforms
- 35,262 people sharing their concerns and asking questions through established feedback mechanisms
- 987,000 people who have access to a safe and accessible channel to report sexual exploitation and abuse by aid workers

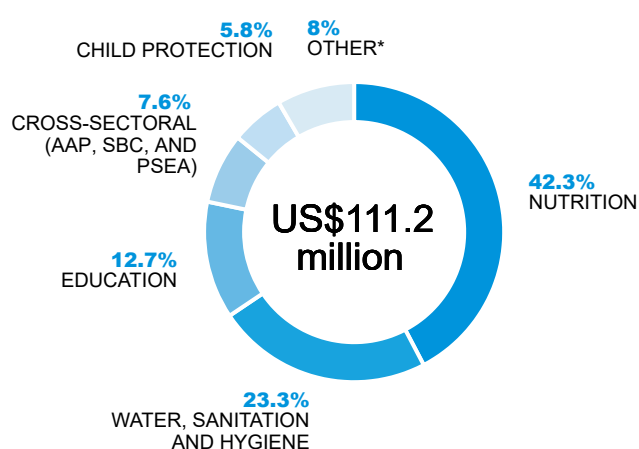
FUNDING REQUIREMENTS IN 2026

UNICEF requires \$111.2 million to provide life-saving and resilience-building assistance in 2026 to 1.4 million people in Chad, including 1.2 million children. Sustained funding will ensure multisectoral interventions in geographic areas with the highest needs, particularly in the eastern provinces affected by the Sudan crisis and in regions facing recurrent epidemics, flooding, drought and large-scale displacement. Fifty-five per cent of the total requirement is dedicated to meeting the needs in refugee-hosting areas.

Aligned with the humanitarian reset and the 2026 Humanitarian Needs and Response Plan, this appeal supports critical activities across nutrition, health, WASH, education, child protection and social protection. It also enables rapid responses to outbreaks, new displacements and seasonal emergencies. In particular, health interventions aim to vaccinate 900,000 children against measles, because measles outbreaks are a recurring major threat in Chad. In addition, UNICEF will continue to expand children's access to formal and non-formal learning.

UNICEF seeks flexible and timely funding to ensure continuity of essential services for children, including internally displaced and host community children, as the crisis in the Sudan continues to put pressure on Chad's fragile systems. Flexible resources are essential for UNICEF to adapt to evolving needs. Such resources can support the pre-positioning of supplies, strengthening community-based systems, enable deployment of rapid response teams and support anticipatory action during the rainy season.

Without adequate funding, children's access to life-saving services will be severely compromised. UNICEF urges partners to provide predictable, flexible, multi-year support to protect children throughout Chad.



Sector	2026 requirements (US\$)
Health and HIV/AIDS	6,289,336
Nutrition	47,066,000
Child protection	6,403,875 ²⁶
Education	14,090,400 ²⁷
Water, sanitation and hygiene	25,878,638
Social protection	300,000
Cross-sectoral (AAP, SBC, and PSEA)	8,447,390 ²⁸
Non-food items	2,736,803
Total	111,212,442

*This includes costs from other sectors/interventions : Health and HIV/AIDS (5.7%), Non-food items (2.5%), Social protection (<1%).

This Humanitarian Action for Children appeal is fully aligned with the 2026 Humanitarian Needs and Response Plan.

Who to contact for further information:

Luciano Calestini
Representative, Chad
T T +235 22 51 89 89
lcalestini@unicef.org

Lucia Elmi
Director, Office of Emergency Programmes (EMOPS)
T +12123267448
lelmi@unicef.org

Mandeep O'Brien
Director, Public Partnerships Division (PPD)
T +1 212 326 7118
mobrien@unicef.org

ENDNOTES

1. United Nations Office for the Coordination of Humanitarian Affairs (OCHA), Chad Humanitarian Needs and Response Plan 2026, February 2026.
2. Ibid.
3. This decrease of more than 36 per cent in the number of people in need in 2025, compared with 2024, is not due to an improvement in the context, nor does it merely reflect a prioritization exercise. It is primarily the result of methodological refocusing and a reduction in the geographical scope of the analysis.
4. Ibid.
5. This figure is calculated based on the number of children aged 6–59 months screened for wasting (790,594); children under age 6 months reached with WASH (10,200), adjusted to avoid double-counting those over 6 months already included in the nutrition target; children over age 5 years to be reached with individual learning materials (352,260); primary caregivers of children aged 0–23 months receiving infant and young child feeding counselling (262,030); and children receiving case management services (3,200; UNICEF considers there is no overlap with other targets for this specific group).
6. This figure is calculated based on the number of children aged 6–59 months screened for wasting (790,594); children under age 6 months reached with WASH (10,200), adjusted to avoid double-counting those over 6 months already included in the nutrition target; children over age 5 years to be reached with individual learning materials (352,260); and children receiving case management services (3,200; UNICEF considers there is no overlap with other targets for this specific group).
7. 2026 Humanitarian Needs and Response Plan.
8. UNHCR, Chad: Forcibly displaced persons – November 2025, UNHCR, December 2025.
9. UNHCR Comprehensive Overview of Response to Emergencies (Core), Situation d'urgence au Tchad: Mise à jour des arrivées du Soudan situation d'urgence des réfugiés soudanais (1 février 2026), UNHCR, 2 February 2026.
10. 2026 Humanitarian Needs and Response Plan.
11. Ibid.
12. Ibid.
13. Projet 21, Tchad: Note de monitoring de protection, janvier – septembre 2025, October 2025.
14. 2026 Humanitarian Needs and Response Plan.
15. Ibid.
16. Ibid.
17. Ibid.
18. Ibid.
19. According to the 2026 Humanitarian Needs and Response Plan, despite ongoing efforts to contain the spread of epidemics (including additional vaccination activities), measles remains a major threat in Chad due to recurrent outbreaks and low vaccination coverage across health districts. The INFORM Risk Index assigns Chad a score of 7.3/10 for epidemic risk. Malaria, diphtheria and dengue are also health threats. This explains the increase in the number of people in need of health assistance.
20. The number of children aged 6–59 months expected to experience severe wasting according to the sector estimation in the priority area and the other provinces, and the ongoing programme to address severe wasting. UNICEF is the sole provider of ready-to-use therapeutic food in Chad.
21. UNICEF targets 352,260 children, 60 per cent of the 587,100 targeted by the Education Cluster.
22. This includes 129,106 individuals in Lac and other provinces (excluding the east), 13 per cent of the cluster's prioritized target (with partners covering the remaining part). In addition, 210,894 refugees (83,960), returnees and host community members are targeted within the framework of the rapid response programme in eastern Chad.
23. This includes 105,274 individuals in Lac and other provinces (excluding the east), representing 11 per cent of the cluster's prioritized target (with partners covering the remaining part). In addition, 174,726 refugees (48,960), returnees and host community members are targeted within the framework of the rapid response programme in eastern Chad.
24. See explanation of target for access to sufficient quantity and quality of water for drinking and domestic needs.
25. This accounts for 10 per cent of sector needs according to the 2026 Humanitarian Needs and Response Plan.
26. This includes \$5,503,875 for child protection and \$900,000 to address gender-based violence in emergencies.
27. The increased funding requirement for education compared with 2025 reflects UNICEF's efforts to continue providing education as a life-saving service in Chad. It aligns with UNICEF's goals under the Core Commitments for Children in Humanitarian Action to promote and protect children's right to education.
28. This includes \$3,416,481 for social and behaviour change activities, \$496,909 for activities focused on accountability to affected populations, \$450,000 for protection from sexual exploitation and abuse and \$4,084,000 for humanitarian cash transfers.