



The surroundings of the learning centres are flooded in Bishwanvarpur. © UNICEF/UN0641342

Report date: 23/05/2022

# Bangladesh Country Office Humanitarian Situation Report No. 01

## Floods in Sylhet

unicef   
for every child

### SITUATION IN NUMBERS

## Highlights

- Around two million people (about 40 per cent children) have been affected by the flood in Sylhet Division<sup>1</sup>. Affected population are in need of food and safe drinking water including Sylhet city corporation areas. 150,000 families in Sylhet and Sunamganj districts have been without power due to submergence of Power Stations.
- Eight male died; three children (aged 11, 13) have died due to lightening while helping parents to save their crops in the field, three people due to boat capsizing (aged 32, 51 and 60), one person due to landslide (aged 27)<sup>2</sup> and one person (aged 35) due to drowning. 96 people have been affected by waterborne diseases<sup>3</sup>.
- Over 750 educational institutions, mostly government primary schools, have been closed due to severe flooding in two districts, causing loss of learning to the students<sup>4</sup>. 447 (234 girls) students were affected as 15 UNICEF-supported learning centres have been damaged as of 17<sup>th</sup> May.
- 1,096 tube wells and 3,876 toilets were affected as of 21 May 2022 as reported by the Department of Public Health Engineering (DPHE Sylhet and Sunamganj).
- As of 21 May 2022, UNICEF and DPHE supported 301,500 people (60,300 households) with safe drinking water, including 7,000 people who benefitted from hygiene kits, jerry cans, sanitary napkins and buckets.

## 4.1 million

People exposed to flooding<sup>5</sup>

## 1.6 million

Children exposed to flooding  
(UNICEF estimate)

## 5 Districts

affected by the flood - Sylhet, Sunamganj, Maulvibazar, Netrokona and Habiganj

## 301,500

People reached with safe drinking water and supplies.

## 7,439

People stay in 95 shelters as of 19<sup>th</sup> May 2022.

## Situation Overview

Heavy rainfall over the past week led to increase of water levels and a serious flood in the North Eastern part of Bangladesh. Sylhet and Sunamganj districts have been affected most severely. The Government of Bangladesh and several national and international agencies, including UNICEF, have already started providing support to the affected communities. According to the latest update by Flood Forecasting and Warning Centre ([FFWC](#)), in Sylhet and Sunamganj, the water is flowing above danger level (up to 1m) at several stations of Surma and Kushiya rivers, and at Amalshid point of Kushiya river in Zakiganj subdistricts of Sylhet district, water is flowing over 1m above danger level (red signal). As per the [FFWC](#)

<sup>1</sup> The Needs Assessment Working Group (NAWG) is part of the Humanitarian Coordination Task Team (HCTT) a coordination platform for the government and non-government humanitarian agencies in Bangladesh.

<sup>2</sup> Civil surgeon, Sylhet (19 May report)

<sup>3</sup> Reported by Sylhet Civil Surgeon's Office

<sup>4</sup> Source from DPEO, Sylhet and Sunamganj, Bangladesh

<sup>5</sup> As per EU's Copernicus Emergency Management Service

forecast, the flood situation may improve in several areas of Sylhet, whereas situation may worsen in the low-lying area of Netrokona District, Mymensingh Division. People living below the poverty line in these areas are in urgent need of emergency food and water supplies.

Sunamganj District Administration allocated 140 Metric Ton of rice, BDT 1,200,000 cash assistance and 2,000 dry food packages to affected population. Also, 56 flood shelters have been prepared. In Sylhet, 326 flood shelters have been prepared and at the moment there are 7,439 people staying in 95 shelters as of 19<sup>th</sup> May 2022. 199 flood shelters have been equipped with WASH facilities and DPHE of Sylhet have raised 35 tube wells and disinfected another 31 damaged tube wells.

As per the rapid assessment forms, there is an immediate need of emergency treatment, shelter, food (rice), dry food and cash assistance in the affected area. At the same time, the severe flooding is causing loss of learning for the students with over 873 educational institutions, mostly government primary schools, having been closed. This includes 447 (234 girls) students who were attending 15 UNICEF-supported learning centres.

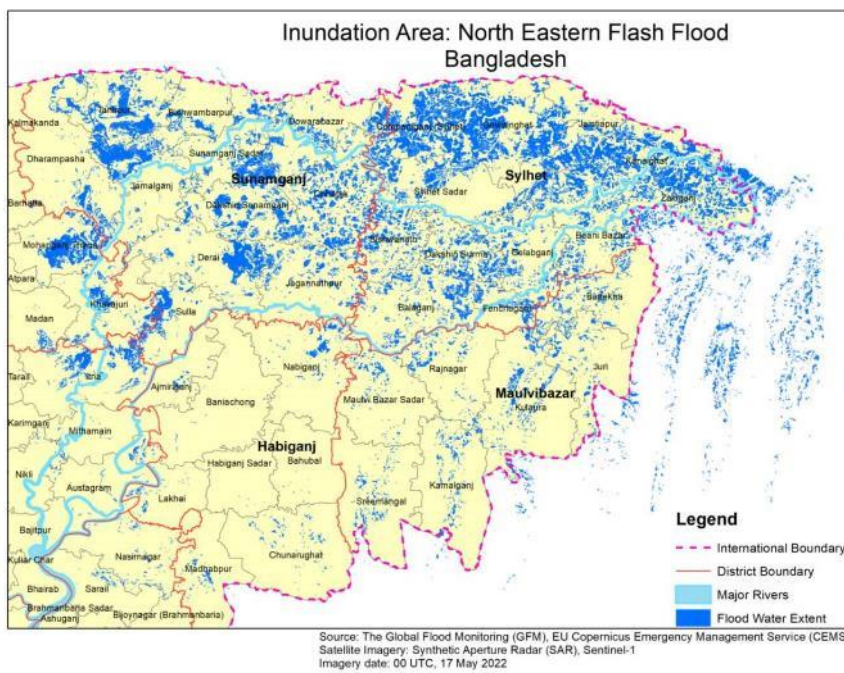


Photo: Children on their way to school through flood waters in Sunamganj district of north-eastern Bangladesh. With many villages submerged, countless other children have been totally cut off from school. Schools, as well as UNICEF-supported learning centres, have suffered damage in the flood and have lost learning materials. © UNICEF/UN0641336/

## Humanitarian Coordination

The [Needs Assessment Working Group](#)<sup>1</sup> (NAWG) under the [Humanitarian Coordination Task Team](#) (HCTT) has developed a preliminary assessment of the situation in collaboration with national authorities and partners in the most affected areas. The NAWG also organized a meeting on 22 May 2022 to discuss the flood situation and the next steps. Based on the meeting results, NAWG and the Department of Disaster Management (DDM) will discuss and decide on the hybrid needs assessment. The assessment is expected to inform humanitarian actors on priority needs and requirements for additional support.

### Immediate needs and UNICEF support

UNICEF and DPHE reached 301,500 affected people (60,300 households) in Sylhet and Sunamganj districts through provision of 603,000 Water Purification Tablets. Hygiene kits, jerry cans, sanitary napkins and buckets were distributed in Sylhet, benefiting 1,400 households.

UNICEF is working closely with the Department of Social Services (DSS) to ensure social workers stand ready for an

emergency response. UNICEF dispatched posters on drowning prevention to distribute through clubs and communicate with education sector for possible collaboration in schools. In Sylhet, UNICEF is discussing radio messaging on drowning prevention and supported sub-national Child Protection Working Group (CPWG) meeting on 22 May.

UNICEF prepositioned 1,050 F-75 and 400 F-100 cartons of therapeutic milk at Central Medical Stores Depot. The Nutrition Cluster Coordination Meeting was also organized to discuss flash flood response plan in Sylhet on 22<sup>nd</sup> May 2022. 149 medical teams are active at sub-district level (140 in Sylhet and nine in Sunamganj and three at city corporation)<sup>6</sup>.

UNICEF partner, District Information Officers (DIOs) and Betar officials jointly worked to broadcast messages on how to face and be prepared for emergency flood situation, develop a preparatory plan to avoid and prevent danger situations, store emergency dry food, prepare water for waterlogged days and store important documents and learning materials of children in plastic bags, etc.

**Learning continuity** is one of the highest priorities for UNICEF. UNICEF prepositioned 3,77 Emergency Education Kit for 6-10 years, which can support 11,310 children. Bangladesh Country Office and Sylhet Field Office maintain close contact with the authorities and humanitarian actors at the national and sub-national levels to monitor the situation and needs of flood affected children and families and support cluster coordination. UNICEF has ongoing partnerships with governmental and non-governmental organizations, which can be reprogrammed to scale up the response should the situation deteriorate further.



Divisional Commissioner and District Administration distributed safe drinking water, jerry cans and food to flood affected people in Jokigong, Sylhet. Source: Manobkantha news

Who to contact for further information:

Sheldon Yett  
Representative  
UNICEF Bangladesh  
Tel: +8802 5566 8088  
syett@unicef.org

Veera Mendonca  
Deputy Representative  
UNICEF Bangladesh  
Mob: +8809604107002  
vmendonca@unicef.org

Saja Abdullah  
Chief Field Services  
UNICEF Bangladesh  
Mob: +8801730089085  
sabdullah@unicef.org

<sup>6</sup> Divisional Director, Health, Sylhet and Civil Surgeon Office, Sylhet.