



**Summary - WPV1 outbreak:**

Outbreak confirmation: 16<sup>th</sup> Feb. 2022

Total number of WPV1 cases: 1

WPV1 cases this week: 0

PHE declaration: 17<sup>th</sup> Feb. 2022

**Most recent isolation and date of onset:**

Source: AFP case

Location: Lilongwe

Date of onset: 19<sup>th</sup> Nov. 2021

**Fig 1:** Distribution of WPV1 case in Malawi



● WPV1 case

## 1.0 HIGHLIGHTS

- On 16 February 2022, Malawi received confirmation of Wild Poliovirus Type 1 (WPV1) from an acute flaccid paralysis (AFP) case in Lilongwe
- The date of onset of this case was 19 November 2021 and stool samples were collected on 26 and 27 November 2021
- The isolated WPV1 virus was highly divergent from the closest genetic relative and is virologically linked to circulation in Pakistan in 2019.
- Since its last isolation in Pakistan, the circulation of the reported virus was missed for about 2 years
- Within 24 hours of the outbreak notification, the Government of Malawi declared Public Health Emergency and activated Emergency Operation Centre to address the Polio Outbreak
- Within 72 hours, global support from GPEI Rapid Response Team arrived in the country to support outbreak response
- The response plan includes at least 4 rounds of nationwide supplementary immunization campaigns (SIA) using bivalent oral poliovirus vaccine (bOPV) in Malawi. The first response round is scheduled to start on 21st March 2022
- Operational budgets have been developed and approved; prefinancing of response operations are being provided

## 2.0 KEY UPDATES

---

### Coordination

- The government of Malawi at all levels continues to show strong commitment to addressing the WPV 1 outbreak
- High level advocacy meeting and update on the progress of WPV 1 outbreak response activities with Minister of Health and Partners held on 2 March 2022. A total of 20 stakeholders were in attendance including the Minister of Health, MOH Senior Management Team members, WHO and UNICEF Country Representatives and GPEI partners
- Coordination meeting with all 29 Directors of Health and Social Services (DHSS') and District Environmental Health Officers (DEHOs) held on 2 March 2022. A total of 120 persons were in attendance including MoH team and GPEI partners. The session was to orientate the District Teams on the upcoming bOPV outbreak response campaign, to facilitate high quality campaign and ensure all eligible children are vaccinated.
- National Emergency Operations Centre with technical working groups (Operations, Surveillance, Logistics and Vaccine Management, Social Mobilization and Data Management) fully functional and holding daily coordination meetings.
- In-country GPEI team continue to support and work as one team with the Government of Malawi

### Supplementary Immunization Activity (SIA)

- A total of 6.8 million doses of vaccines for two rounds of SIA arrived in-country on 5 March 2022 and shipped directly to the regional vaccine stores. The bundled vaccines will subsequently be distributed to the 29 implementing districts based on logistic microplans.
- National Training of Trainers (TOT) was conducted from 3 – 4 March 2022. A total of 23 participants in attendance, including GPEI partners. The trainings included the use of ODK tools for field level supervision and real time monitoring of the campaign.
- Training and deployment plans for Zonal and District level developed, with national officers surge teams to deploy to the districts from 9 March 2022.
- Ongoing repair & maintenance of cold chain equipment in the districts with a total of 28 cold chain equipment repaired and the remaining 28 to be repaired this week
- Daily tracking of SIA preparedness at national and district level

**Table 1:** Scope of approved 1<sup>st</sup> round of Supplementary Immunization Activity (SIA)

Geopolitical zones	Number of districts	Population of 0-5years
North	7	347,681
Central East	5	454,996
Central West	4	741,443
South East	6	818,831
South West	7	559,224
<b>Total</b>	<b>29</b>	<b>2,922,175</b>

### Surveillance

- Training of district surveillance officers on AFP and other Vaccine Preventable Diseases (VPD) surveillance held from 4 - 5 March 2022, targeting district surveillance officers in all 29 districts. A total 167 participants were trained supported by GPEI partners.
- A total of 8 Environmental Surveillance (ES) sites have so far been established in Lilongwe, Blantyre and Zomba with a total of 16 collectors and 8 supervisors trained.
- A total of 11 samples have been collected so far, 3 are already shipped to NICD and 8 other pending shipment today
- Ongoing intensified active surveillance in health facilities and communities across the country

**Fig. 2.:** Ongoing Community Surveillance



### Communication and Social Mobilization

- Conducted orientation for District Health Promotion Officers in all 29 District on advocacy, social mobilization and communication.
- Ongoing pretesting, printing and dissemination of Polio communication materials and products
- PSA, radio jingles have been produced and soon to be released.
- Media briefings have been central region

### 3.0 NEXT STEPS

---

- Commence vaccine distribution and vaccine management trainings at lower levels
- High level Faith Based leaders on Polio scheduled for 9 – 10 March under HE President of Malawi
- Deploy additional national and international surge staff to districts to support operationalization of EOC and Outbreak response activities
- Conduct SIA Zonal and District level Training of Trainers (TOTs)
- Expand Polio Environmental Surveillance sites to Mzuzu
- Complete repairs of outstanding cold chain equipment in the regions
- Daily tracking of SIA preparedness at national and district level

### CONTACTS

---

For more information about the situation report, please contact:

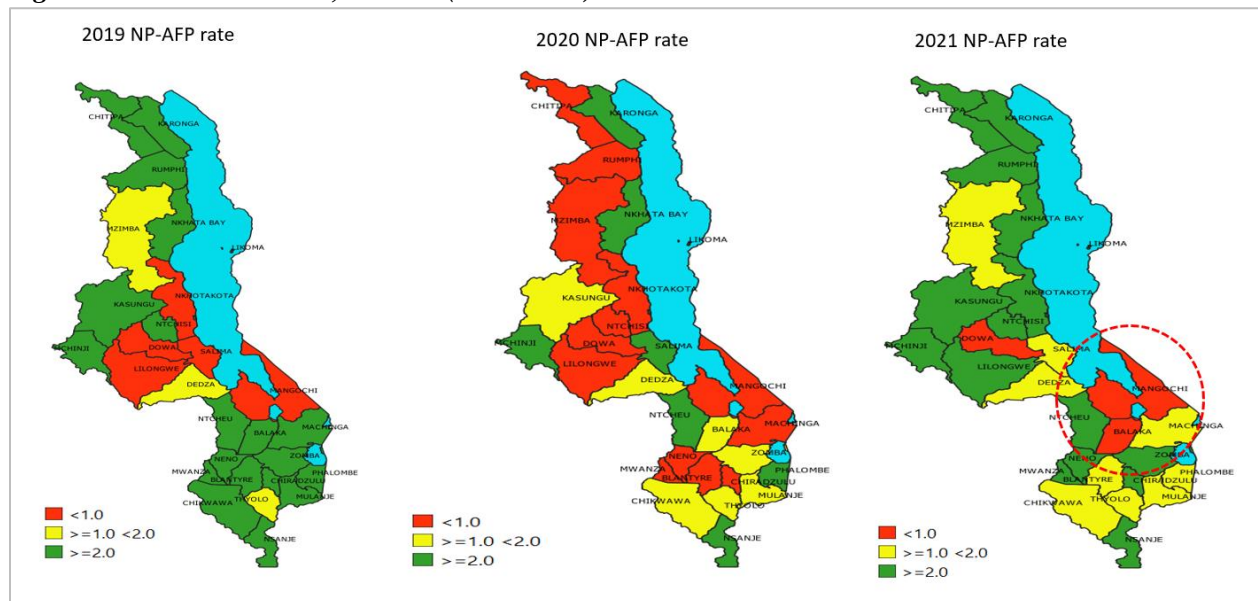
Organization	Role	Name	Email address
MoH	Incident Manager	Dr Storn Kabuluzi	skabuluzi@yahoo.com
	Deputy Incident Manager	Dr Annie Mwale	chaumaannie@gmail.com
	Operations and Technical Lead	Dr Mike Chisema	nchisema@gmail.com
WHO Country Office	Country Representative	Dr Janet Kayita	kayitaj@who.int
	Polio OBR Lead	Dr Susan Kambale	kambales@who.int
UNICEF Country Office	Country Representative	Rudolf Schwenk	rschwenk@unicef.org
	Polio OBR Lead	Dr Sethy Ghanashyam	gsethy@unicef.org
GPEI	GPEI Coordinator	Dr Fadinding Manneh	mannehf@who.int

## ANNEX

**Fig 3. National SIA Preparedness Dashboard**

Program Area	National
1.Planning, coordination and financing	86%
2.Training for SIAs	61%
3.Monitoring and Supervision	68%
4.Vaccine, cold chain and logistics	60%
5.Advocacy, social mobilization and communication	63%
6. Global Status of preparedness	68%

**Fig 4: Non-Polio AFP rate, Malawi (2019-2021)**



**Fig 5: Stool Adequacy Rate, Malawi (2019-2021)**

