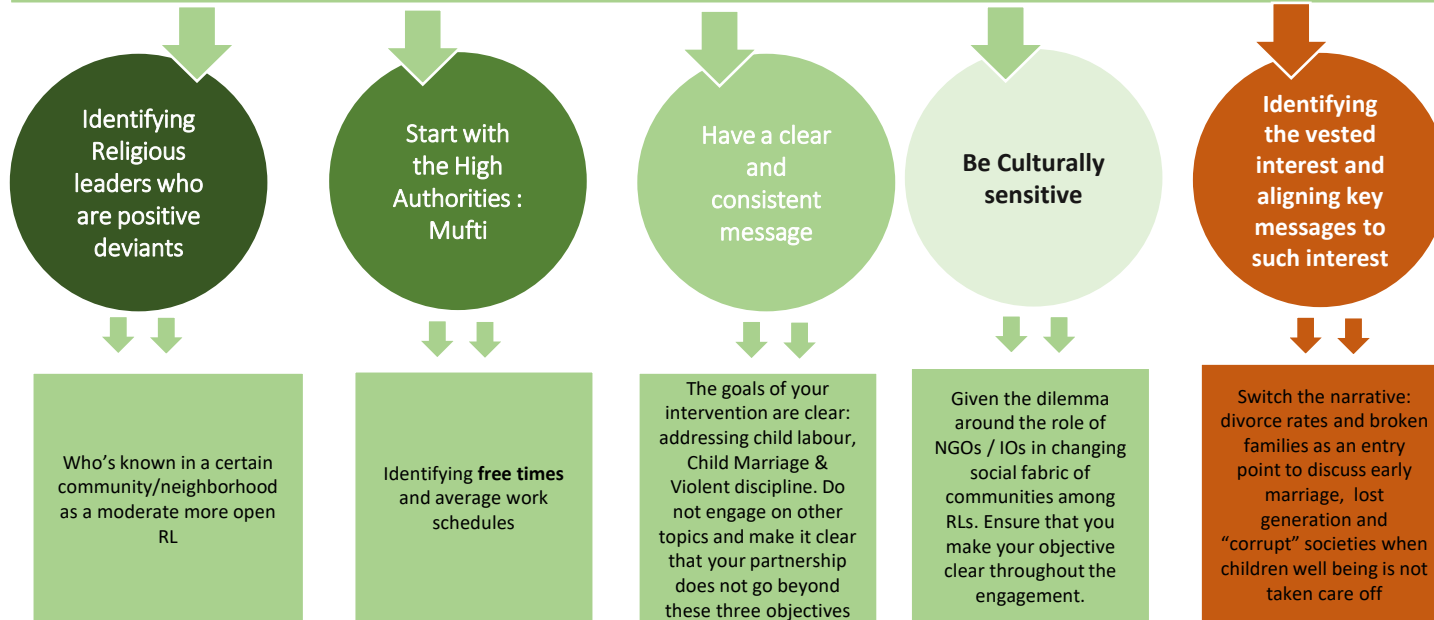


# Identifying Entry Points to Engage with Religious Leaders

Towards contextualized interventions for the successful engagement of Men: the QUDWA Approach

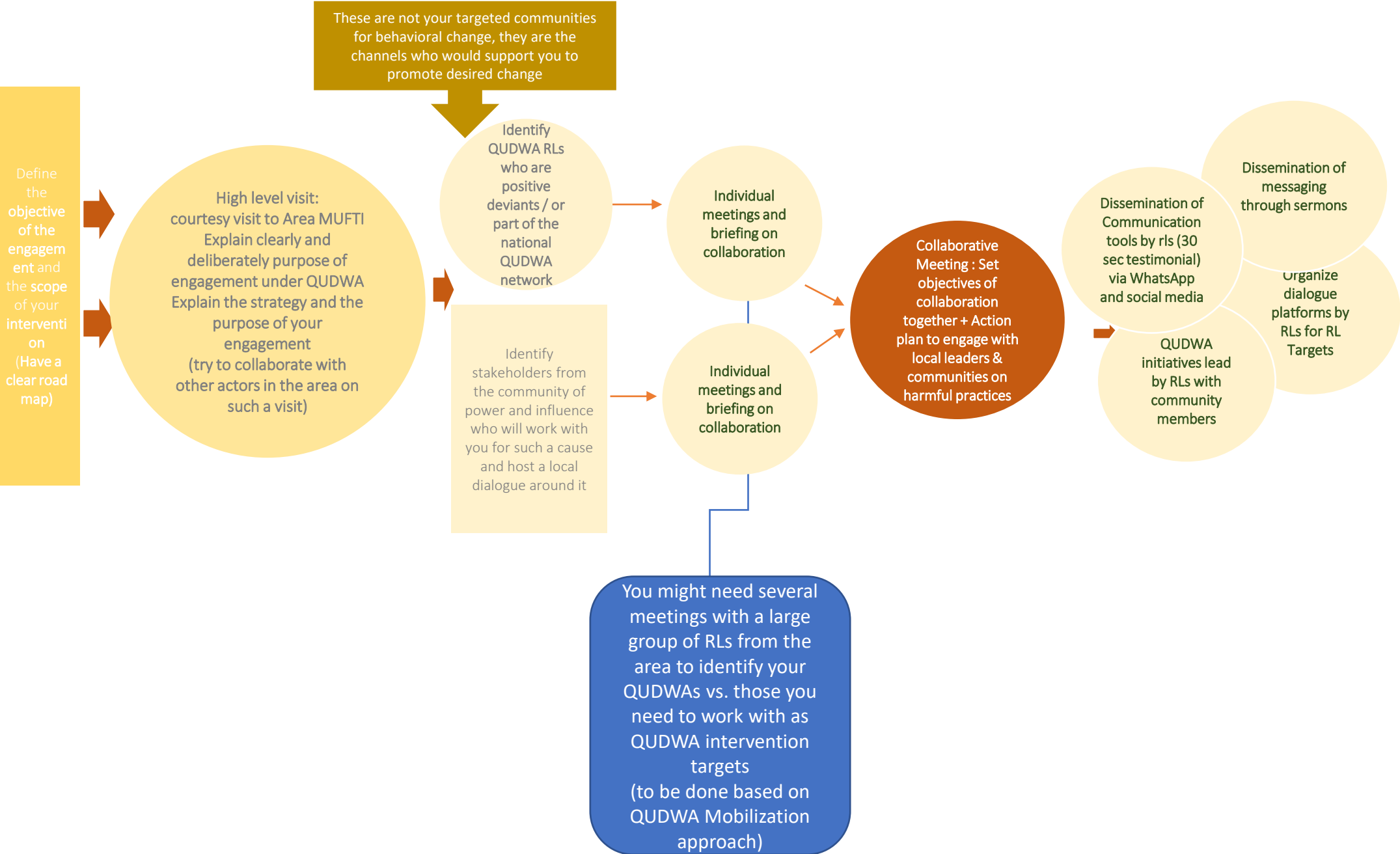
## The 5 main considerations to design QUDWA interventions that address Religious Leaders



### Notes:

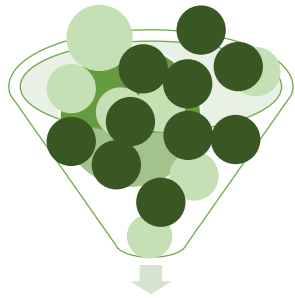
- Consult with other actors on availability of database of positive deviants' religious leaders who can support partners in each area
- Such interventions should be done based on clear action plan and deliberate framework: round table discussion alone is not enough. A RT discussion should be an entry point to be followed by an Action plan and assigned activities with RLs as lead influencers.
- consider that not all RLs will be your allies and not everyone will be an ally or become a Qudwa
- use narrative that is compatible and relevant to religious versus and principals: Human rights, gender, and the different narratives we use internally among us as actors might not be relevant to everyone. These could be very controversial specifically for RLs. Upon engagement we need to speak their language, rely on QUDWA key messages and adapt key entry points based on need. It is up to the partner to assess what and how this engagement should be done to be successful.
- Following initial engagement, we encourage implementation of mixed events among RLs and civil servants, social workers.
- If there are different actors in your area working on RL engagement, go to RLs as one. Especially in High level engagement (Ex. Mufti of Area). Try to avoid duplication. This tires RLs and can lead to loss of interest.
- repetition, accumulation of knowledge, experience, events, and continuous engagement will make a difference
- Terminology: Where gender and equality and rights become controversial as entry points, use social justice **العدالة الاجتماعية** instead

# Recommended Pathway For Impactful Engagement with RLs



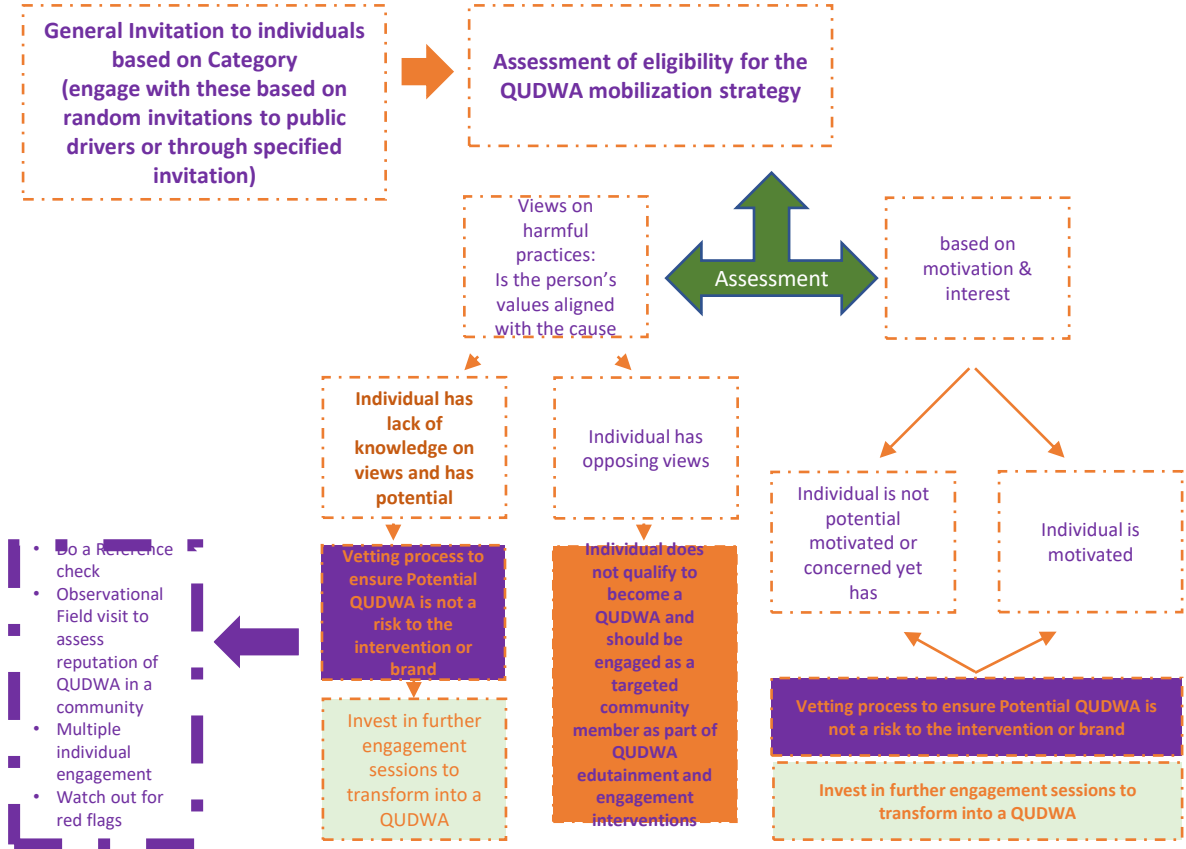
# General Guidance

## How do we mobilize Our QUDWAs



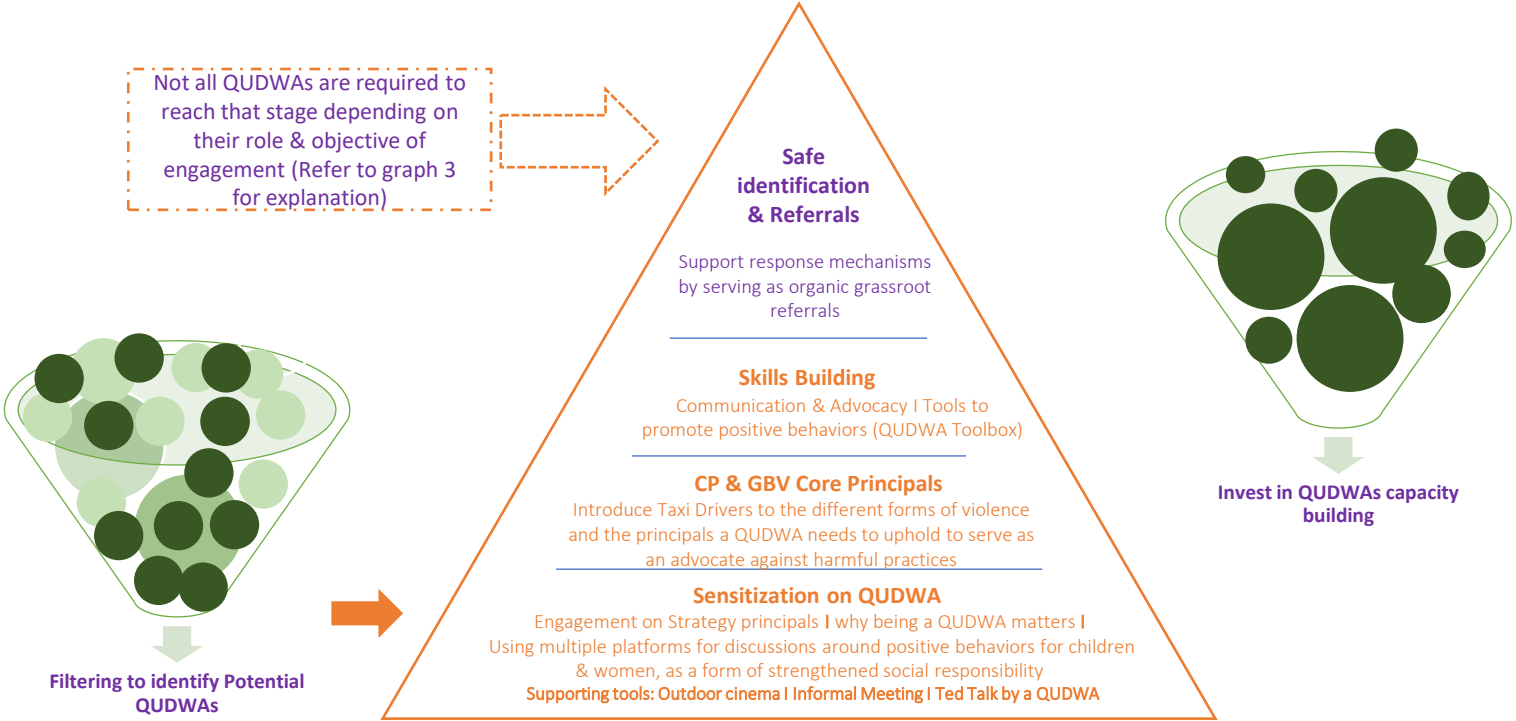
### Filtering of Potential QUDWAs

Understanding who is your active agent of change and who is your targeted point of intervention



- Do a Reference check
- Observational Field visit to assess reputation of QUDWA in a community
- Multiple individual engagement
- Watch out for red flags

# General Guidance



Empowering your QUDWAs to become advocates of Change