

Health Emergency Facility



The challenge

In recent years, multiple crises have quickly overwhelmed health care systems, leaving them unable to cope with the sudden surge in patients let alone provide essential health services.

The Ebola outbreaks, cholera outbreaks and ongoing COVID-19 pandemic have highlighted the urgent need for rapidly deployable surge health facilities to provide screening and isolation of patients in the event of a major disease outbreak. This will ultimately prevent the further spread of deadly epidemics.

The solution

UNICEF, the World Health Organization (WHO) and Médecins Sans Frontières (MSF) are developing a Health Emergency Facility which can be rapidly deployed and equipped in the event of future disease outbreaks.

Using guidelines and a digital planning tool, programme and supply managers will be able to identify, configure and customize health facilities from multiple pre-designed layouts for various types of disease outbreaks. The tool will generate procurement lists including all components needed to operationalize, with items able to be easily ordered through the WHO, UNICEF and MSF supply catalogues.

During the onset of the COVID-19 pandemic, many ad-hoc health facilities took months to plan, install and operationalize. The new facilities will be designed to be set up in

under a week, with speed critical to help prevent a major infectious disease outbreak from spreading further.

Stage one of the project will deliver a facility capable of providing surge capacity for screening, isolation, treatment and potentially immunization in response to COVID-19 to support roll-out of COVAX.

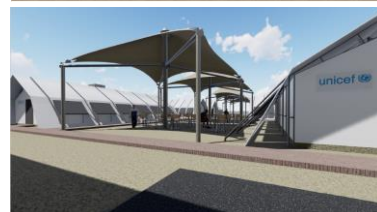
Upon completion of stage one, the quality and performance of the facility will be evaluated to iterate product improvements for stage two which will focus on providing a facility capable of providing minimum basic primary health care services.

The impact

With epidemics occurring more often and spreading faster and further than ever, having rapidly deployable health emergency facilities available will help prevent small disease outbreaks from becoming global pandemics, potentially saving millions of lives.

Once available, UNICEF aims to use the Health Emergency Facility in response to the COVID-19 pandemic, while also preparing for the future health crises.

This initiative will help prevent existing health systems from being overwhelmed by the vast increase of patients. It will also help ensure UNICEF, governments, UN partners and MSF will be better equipped to respond rapidly in sudden onset emergencies and ensure children and their families can receive the urgent health care they need.



Preliminary layout designs

Key Features:

- Tents and corridor connectors
- Furniture, including hospital beds
- Water supply
- Generator
- Solar/electrical kits
- Medical equipment
- Medicines
- Sanitation cabins
- Isolation solutions
- Hard flooring
- Winterization customization
- Child-friendly area

UNICEF - Bo Strange Sorensen
Project Officer,
Product Innovation Centre,
UNICEF Supply Division
Tel. +45 45 33 57 12
Email: bssorensen@unicef.org

WHO - Michele Di Marco
Architect & Disaster Manager,
Health & Technical Logistics Team
Tel. +45 22 71 95 45
Email: dim@who.int

MSF - Amor Chandoul
Logistics Innovation Responsible,
Displacement Unit, OCBA
Operations department
Tel. +97150 84 727 09
Email: amor.chandoul@nairobi.msf.org