

Emergency Nutrition Response in Ethiopia: Afar

As of 10 December 2018

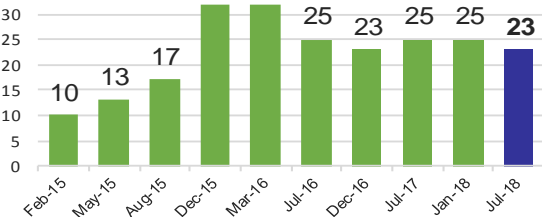
Context

23 out of 32 woredas classified as hotspot 1 (severely affected districts)*
Population estimated to be **1.8 million** (CSA projection)
254,000 children and PLW with MAM expected in 2018**
19,800 children with SAM expected in 2018*

UNICEF is supporting the Government of Ethiopia for emergency response.

*Latest updated figures from the Mid-Year Review of the Humanitarian and Disaster Resilience Plan (August 2018). **As per January estimated caseload. The Revised figure was discussed during the August Mid Year Review and still pending official endorsement.

Hotspot Priority 1 Woredas, 2015-2018



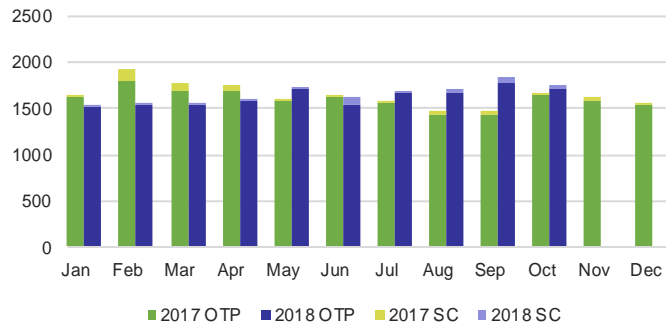
Coordination

- UNICEF is supporting Regional Emergency Nutrition Coordination Unit (R-ENCU)
- UNICEF is participating in relevant regional and zonal level coordination meetings

To Facilitate Rapid Response

2 UNICEF staff supporting emergency
5 CMAM monitors deployed

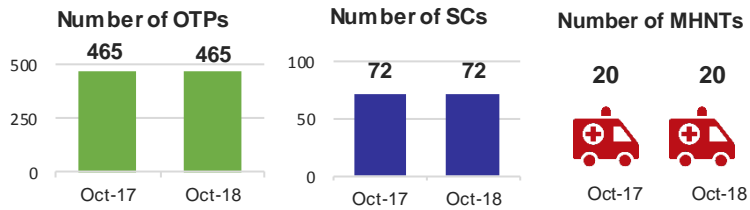
SAM Admissions, 2017-2018



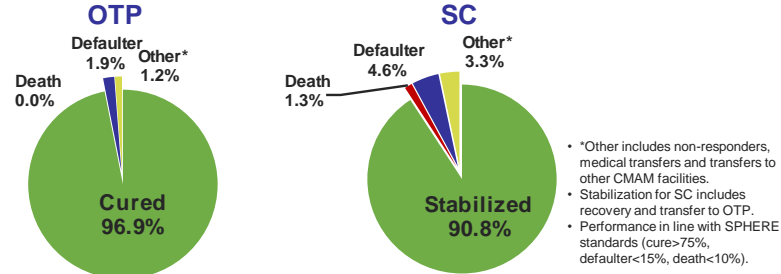
16,687 children admitted with SAM in Jan-Oct 2018, out of whom **329** were admitted to inpatient care (**2%** of total SAM admissions)
95.4% reporting rate

• 1,756 children were admitted in October 2018, a slight decrease from previous month.

Expansion of SAM Facilities, 2017-2018



SAM Programme Performance in 2018



*Other includes non-responders, medical transfers and transfers to other CMAM facilities.
• Stabilization for SC includes recovery and transfer to OTP.
• Performance in line with SPHERE standards (cure>75%, defaulter<15%, death<10%).

Overview of Region

- In Afar, *sugum* rain (February-April) is critical for water replenishment and pasture regeneration, especially after long dry *jilaal* season (September-December). Due to the rain delays, north and north eastern part of the region is experiencing serious water shortage.
- In Jan-Oct 2018, **6%** of total admitted children received SAM treatment in Afar similar as same period last year.
- In this period, **19%** of OTP admissions were managed by the MHNTs.
- Recent screening activity done in the region show a proxy GAM of 16.9% 9and SAM at 0.8%).