



ETHIOPIA

Children Fact Sheet

2018



Ministry of Women and Children Affairs





Demographics

UNCRC Article 1: "For the purposes of the present Convention, a child means every human being below the age of eighteen years unless under the law applicable to the child, majority is attained earlier"

Indicator		Source	Value
Total population	Total	CSA 2018 calculated projection - (2007-2037)	96,504,000
	Male (%)		50.2
	Female (%)		49.8
	Urban		20,057,000
	Male (%)		49.7
	Female (%)		50.3
	Rural		76,447,000
	Male (%)		50.3
	Female (%)		49.7
Population annual growth rate (%)		EDHS 2011	2.6
Total fertility rate (age 15-49)	Total	EDHS 2016	4.6
	Urban		2.3
	Rural		5.2
Life expectancy at birth (years)	Male (%)	CSA 2018 calculated projection - (2007-2037)	62.4
	Female (%)		66.6
% of population under age 0-19	Total	CSA 2018 calculated projection - (2007-2037)	47,837,055
	Male (%)		25.7
	Female (%)		25
% of population under age 0-15	Total	CSA 2018 calculated projection - (2007-2037)	37,336,350
	Male (%)		20.1
	Female (%)		19.5
Total population under age 0-4	Total	CSA 2018 calculated projection - (2007-2037)	13,528,590
	Male (%)		7.3
	Female (%)		7.1





© UNICEF ETHIOPIA/2016/ MULUGETA AVENE

Sustainable Development Goals (SDGs)



End poverty in all its forms everywhere



Reduce inequality within and among countries

UNCRC Article 2

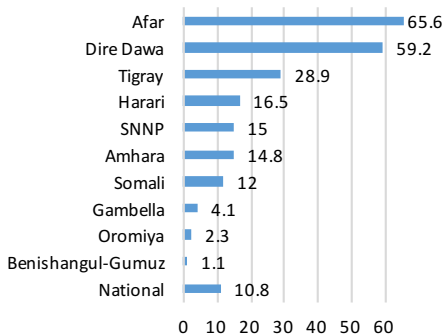
Non-discrimination respect and ensure the rights to each child within their jurisdiction without discrimination of any kind, irrespective of the child's or his or her parent's or legal guardian's race, colour, sex, language, religion, political or other opinion, national, ethnic or social origin, property, disability, birth or other status. States Parties shall take all appropriate measures to ensure that the child is protected against all forms of discrimination or punishment on the basis of the status, activities, expressed opinions, or beliefs of the child's parents, legal guardians, or family members.



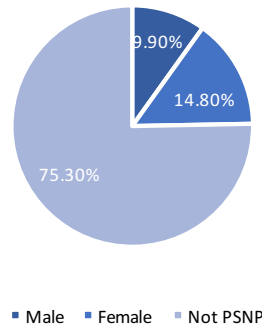
Economic Indicators

Indicator	Source	Value
GDP per capita (USD) (Nominal 2006 EFY)	MoFEC 2015/16	794
GNI per Capita* (2015 USD)	World Bank Group 2016	660
Annual growth rate of real GDP (%)	World Bank Group 2018	8
Proportion of population under 18 living below the national poverty line (%)	CSA-UNICEF 2015 (Child Poverty Report)	32.42
People living below the total poverty line (%)	HCES 2015/2016	23.5
People living below the food poverty line (%)	HCES 2015/2016	24.8
Population in severe Multi-dimensional Poverty (%)	UNDP Human Development Report 2016	67
Inflation rate (January 2018) (%)	CSA 2018	13.4
Proportion of Tax revenue out of GDP (%)	National Bank of Ethiopia 2016/17	11.6
Percent distribution of rural households by whether they are in Productive Safety Net Programme (PSNP)	See Graphs 1 & 2	

Graph 1: Percent distribution of rural households by whether they are Productive Safety Net Programme (PSNP)



Graph 2: Percent distribution of rural household heads by sex under the Productive Safety Net Programme (PSNP)



Source: Ethiopia Mini DHS 2014



© UNICEF ETHIOPIA/2016/NAHOM TESFAYE



© UNICEF/ETHIOPIA/2016/ NAHOM TESFAYE

Sustainable Development Goals (SDGs)



End hunger, achieve food security and improved nutrition and promote sustainable agriculture



Healthy lives and well-being for all at all ages

UNCRC Article 6

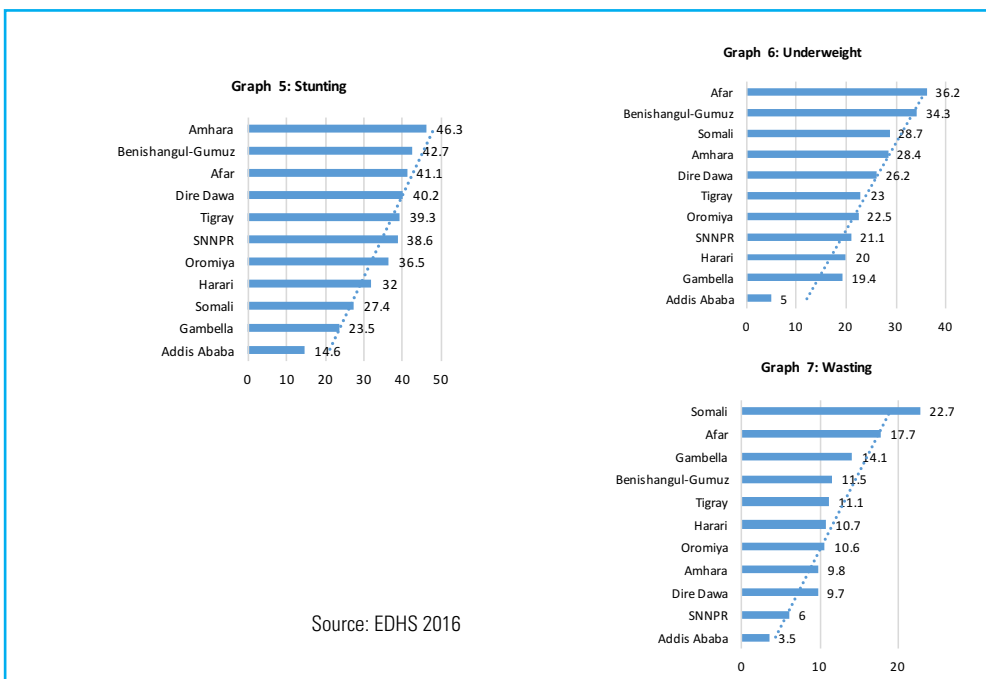
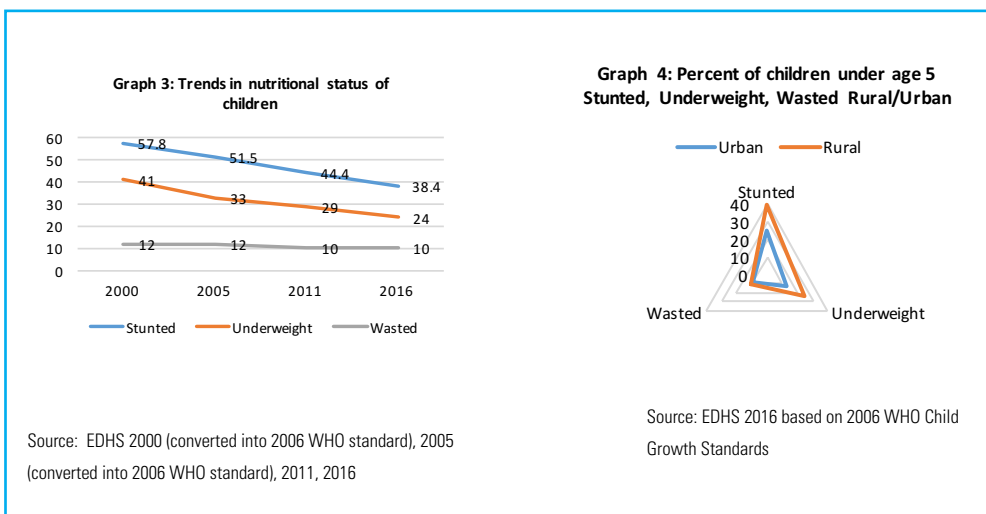
Recognize that every child has the inherent right to life and ensure to the maximum extent possible the survival and development of the child. Article 24 Right of the child to the enjoyment of the highest attainable standard of health, ensure that no child is deprived of his or her right of access to health care services.



Nutrition



Nutritional Status of Children	
Trends in Nutritional Status of Children	See Graph 3
Percent of Children under age 5 Stunted, Underweight, Wasted Rural/Urban	See Graph 4
Percent of children under age 5 Stunted, Underweight, Wasted by Region	See Graphs 5,6&7

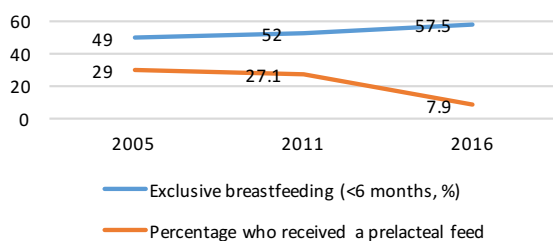




Breastfeeding

Indicator		Source	Value
Trends in early initiation of Breast Feeding: Who started breastfeeding within 1 hour of birth (%)	Total	EDHS 2016	73.3
	Male (%)		71.3
	Female (%)		75.2
	Rural		73.4
	Urban		72.6
	Total	EDHS 2011	51.5
	Male (%)		49
	Female (%)		54.3
	Rural		50.6
	Urban		57.1
	Total	EDHS 2005	69.1
	Male (%)		68.4
	Female (%)		69.8
	Rural		69.5
	Urban		64.8
	Total	EDHS 2000	51.8
	Male (%)		51.9
	Female (%)		51.7
Rural	52.3		
Urban	47.1		
Trends in Exclusive breastfeeding (<6 months, %) and Prelacteal Feed			See Graph 8

Graph 8: Trends in exclusive breastfeeding (<6 months, %) and prelacteal feed



Source: EDHS 2005, 2011, 2016

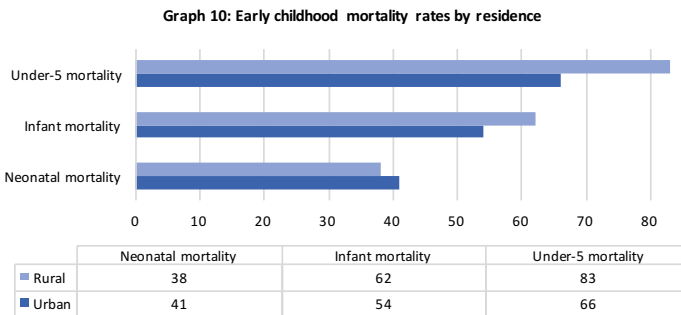
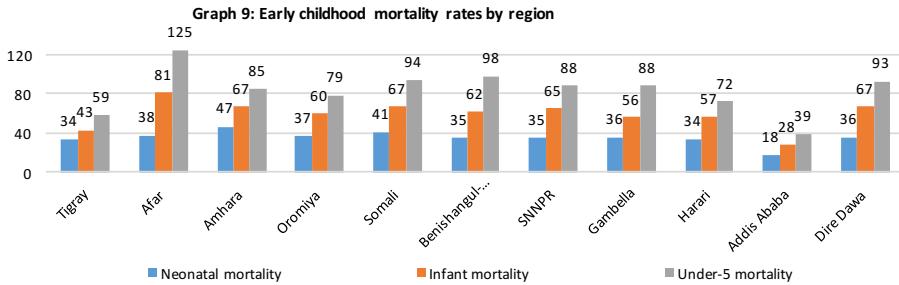


© UNICEF ETHIOPIA/2014/MICHAEL SEGAYE



Child Mortality

Indicator	Source	Value
Neonatal mortality (death per 1,000 live births) (0/00) Probability of dying in the first month of life	EDHS 2016	29
	EDHS 2011	37
	EDHS 2005	39
	EDHS 2000	49
Infant mortality rate (death per 1,000 live births) (0/00) Probability of dying before the first birthday	EDHS 2016	48
	EDHS 2011	59
	EDHS 2005	77
	EDHS 2000	97
Under five mortality rate (death per 1,000 live births) (0/00) (Deaths per 1,000 live births in the 5-year period before the survey)	EDHS 2016	67
	EDHS 2011	88
	EDHS 2005	123
	EDHS 2000	166
Early childhood mortality rates by Region		See Graph 9
Early childhood mortality rates according to place of Residence		See Graph 10



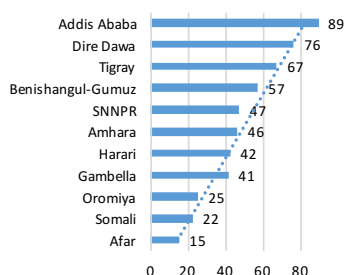
Source: EDHS 2016



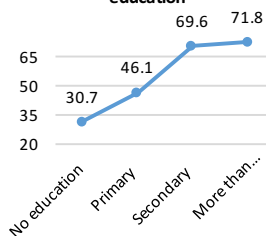
Childhood Illness and Treatment

Indicator		Source	Value
Trends in percentage of children age 12-23 months who have received all basic vaccinations, Total, Urban, Rural	Total	EDHS 2016	38.5
	Male (%)		36.5
	Female (%)		40.3
	Rural		35.1
	Urban		64.6
	Total	EDHS 2011	24.3
	Male (%)		23.1
	Female (%)		25.7
	Rural		20.4
	Urban		48.1
	Total	EDHS 2005	20.4
	Male (%)		22.5
	Female (%)		18.2
	Rural		17.9
	Urban		49.3
	Total	EDHS 2000	14.3
Male (%)	14.7		
Female (%)	13.8		
Rural	11		
Urban	42		
Percentage of children age 12-23 months who received all basic vaccinations at any time before the survey by Region, Mother's education and HH Wealth quintile in 2016			See Graphs 11&12
Proportion of women who had a live birth in the 5 years preceding the survey whose last live birth was protected against neonatal tetanus (%)	Total	EDHS 2016	49
	Urban		72.4
	Rural		45.6
Percentage of children under age 5 who reported a fever in the two weeks preceding the survey sought treatment from a facility		EDHS 2016	35
		EDHS 2011	24.2
		EDHS 2005	17.5

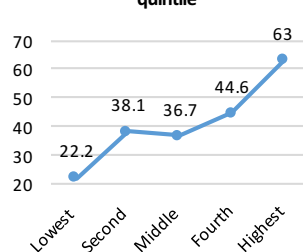
Graph 11: Percentage of children age 12-23 months who received all basic vaccinations



Graph 12 a: Vaccination coverage by mother's education



Graph 12 b: Vaccination coverage by HH wealth quintile



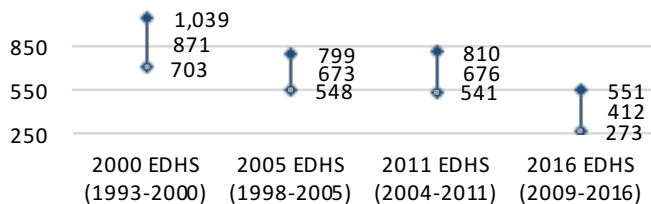
Source: EDHS 2016



Maternal Mortality

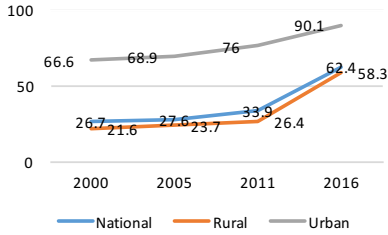
Indicator	Source	Value
Trends in maternal mortality ratio (per 100,000 live birth)		See Graph 13
Women aged 15-49 attended at least once by a skilled health provider during pregnancy (%)		See Graph 14
Percentage delivered in a health facility by mother's education and household wealth quintile		See Graph 15
Trend in women with a postnatal check during the first 2 days after birth		See Graph 16
Unmet need for family planning for currently married women age 15-49 (%)	EDHS 2016	22
	EDHS 2011	25
	EDHS 2005	33.8
	EDHS 2000	35.8
Trends in use of contraception among all women aged 15-19 Any modern method	EDHS 2016	7.4
	EDHS 2011	5.2
	EDHS 2005	2.5
	EDHS 2000	1.3
Trends in use of contraception among all women aged 15-49 Any modern method	EDHS 2016	24.9
	EDHS 2011	18.7
	EDHS 2005	9.7
	EDHS 2000	4.7
Trends in use of contraception among all women aged 15-49 Any method	EDHS 2016	25.3
	EDHS 2011	19.6
	EDHS 2005	10.3
	EDHS 2000	5.9
Mothers age 15-49 with a live birth in the five years preceding the survey receiving two or more tetanus toxoid injections during last pregnancy (%)	EDHS 2016	41.1
	EDHS 2011	33.8
	EDHS 2005	28
	EDHS 2000	17.2
Trends in Maternal Health Care, 2016		See Graph 17

Graph 13: Maternal Mortality Ratio (MMR) with confidence intervals for the seven years preceding the 2000, 2005, 2011, and 2016 EDHS



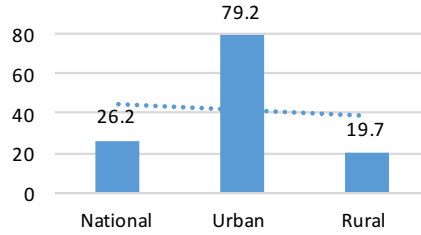
Source: EDHS 2000, 2005, 2011, 2016

Graph 14: ANC - Women aged 15-49 attended at least once by a skilled health provider during pregnancy (%)

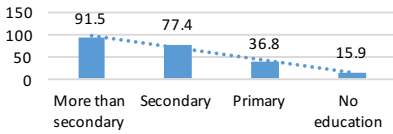


Source: EDHS 2000, 2005, 2011, 2016

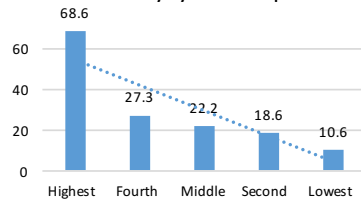
Graph 15 a: Percentage delivered in a health facility by residence



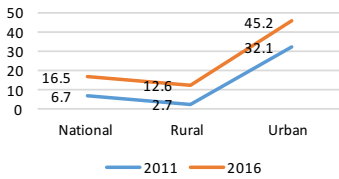
Graph 15 b: Percentage delivered in a health facility by mothers education



Graph 15 c: Percentage delivered in a health facility by HH wealth quintile

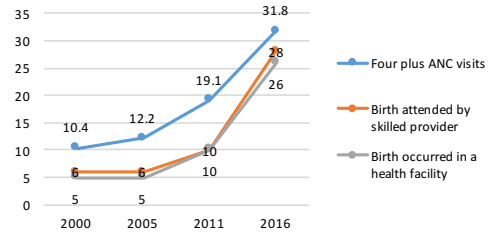


Graph 16: Trends in women with a postnatal check during the first 2 days after birth



Source: EDHS 2016

Graph 17: Trends in Maternal Health Care



Source: EDHS 2000, 2005, 2011, 2016



© UNICEF ETHIOPIA/2017/MULUGETA AYENE



HIV/AIDS

Indicator		Source	Value
% of pregnant women aged 15-49 who received HIV tests, results and post-test counselling		EDHS 2016	21.9
		EDHS 2011	11.3
% of young people aged 15-19 with correct, comprehensive knowledge of HIV/AIDS	Male (%)	EDHS 2016	37.6
	Female (%)		24
	Male (%)	EDHS 2011	31.8
	Female (%)		24
% of young people aged 15-19 who were tested for HIV in the past 12 months and received the results	Male (%)	EDHS 2016	8.9
	Female (%)		12.4
	Male (%)	EDHS 2011	16.5
	Female (%)		18
Trends in HIV Prevalence among people age 15-49 (%)	Total	EDHS 2016 HIV Prevalence Report	0.9
	Male (%)		0.6
	Female (%)		1.2
	Total	EDHS 2011	1.5
	Male (%)		1
	Female (%)		1.9
	Total	EDHS 2005	1.4
	Female (%)		2
HIV Prevalence among adolescent age 15-19 (%)	Total	EDHS 2016 HIV Prevalence Report	0.2
	Male (%)		<0.1
	Female (%)		0.4
	Total	EDHS 2011	0.1
	Male (%)		0
	Female (%)		0.2



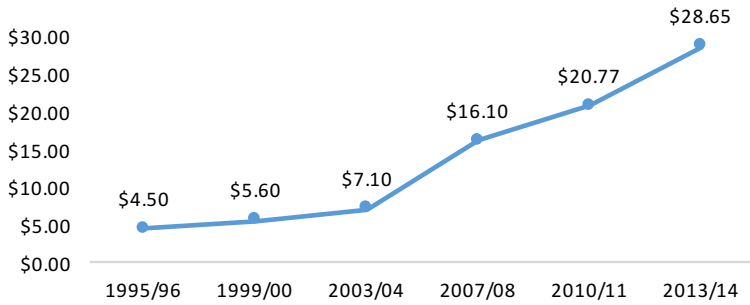
© UNICEF ETHIOPIA/2013/ZERIHUN SEWUNET



Health Expenditure

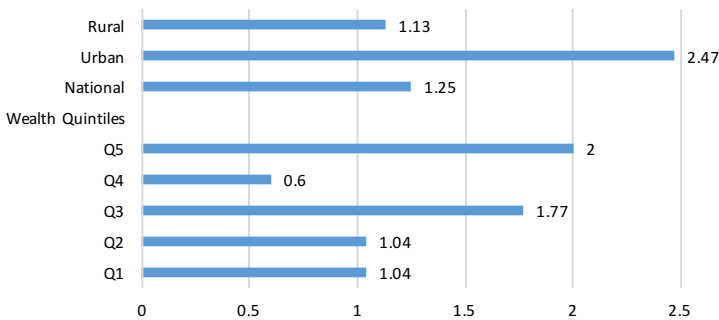
Indicator	Source	Value
Child health expenditure as a percentage of national health expenditure (%)	Ethiopia's Fifth National Health Account 2010/11, FMOH, 2010b 2007/8	10
	Ethiopia's Fifth National Health Account 2010/11, FMOH, 2010b 2010/11	11
Per Capita Health Expenditure, 1995/96–2013/14	Ethiopia' Health Accounts, 2013/2014 - FMOH, HA 1-5 reports, and current HA data	See Graph 18
Proportion of People covered by Health Insurance - residence and wealth quintiles	Ethiopia's Fifth National Health Account 2010/11, FMOH, 2010b 2010/11	See Graph 19

Graph 18: Per Capita Health Expenditure, 1995/96–2013/14



Source: Ethiopia Health Accounts, 2013/2014

Graph 19: Proportion of people covered by health insurance (2011/12), residence and HH wealth quintiles



Source: Ethiopia's Fifth National Health Account 2010/11



© UNICEF ETHIOPIA/2017/NAHOM TESFAYE

Sustainable Development Goals (SDGs)



Ensure inclusive and equitable quality education and lifelong learning for all

UNCRC Article 28

The right of the child to education - make primary education compulsory and available free to all; ensure that school discipline conform to child's human dignity and promote and encourage international cooperation in matters relating to education, Article 29 Goals of education directed towards the development of the child's talents and mental and physical abilities, Article 30 Children of minorities/indigenous groups to enjoy his or her own religion, or to use his or her own language, Article 31 Leisure, play and culture



Education



© UNICEF ETHIOPIA/2016/ MARTHA TADESSE

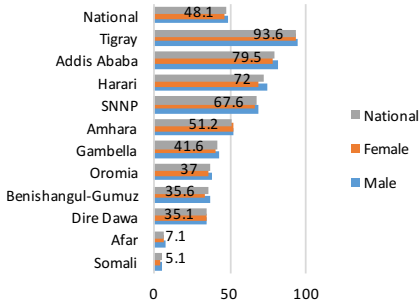
Pre- Primary, Primary and Secondary NER and NAR

Pre-primary net enrollment ratio (NER) (%) by region

See Graph 20

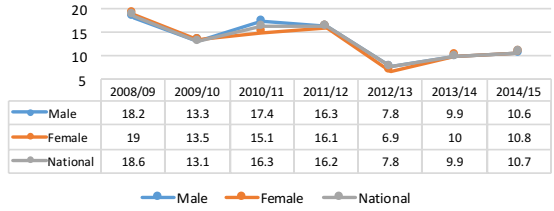
Indicator		Source	Value
Net attendance ratio Primary School	Total	EDHS 2016	71.3
	Male (%)		71
	Female (%)		71.6
	Total	EDHS 2011	64.5
	Male (%)		64
	Female (%)		65
	Total	EDHS 2005	42.3
	Male (%)		42.2
	Female (%)		42.4
Net attendance ratio Secondary School	Total	EDHS 2016	18.1
	Male (%)		17.6
	Female (%)		18.4
	Total	EDHS 2011	13.7
	Male (%)		14
	Female (%)		13.4
	Total	EDHS 2005	15.6
	Male (%)		17.7
	Female (%)		13.3
Net attendance ratio Primary School Urban/ Rural	Urban	EDHS 2016	83.1
		EDHS 2011	83.6
		EDHS 2005	78.8
	Rural	EDHS 2016	69.8
		EDHS 2011	61.1
		EDHS 2005	38.8
Net attendance ratio Secondary School Urban/ Rural	Urban	EDHS 2016	41.5
		EDHS 2011	39.1
		EDHS 2005	48.2
	Rural	EDHS 2016	11.7
		EDHS 2011	6.2
		EDHS 2005	9.7
Trends in dropout rate, grade 1-8 (%)			See Graph 21
Trends in national pupil teacher ratio			See Graph 22

Graph 20: Preprimary NER 2008 E.C. (2015/16)



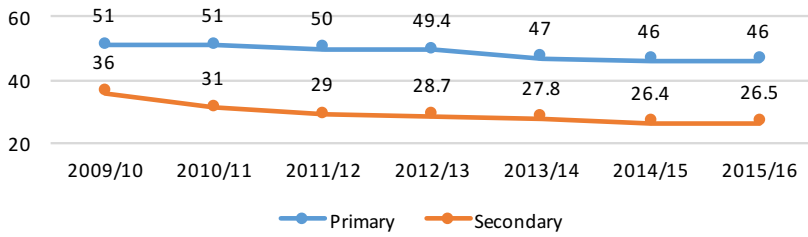
Source: MoE Education Statistics 2015/16

Graph 21: Trends in dropout rate, grade 1-8 (%)



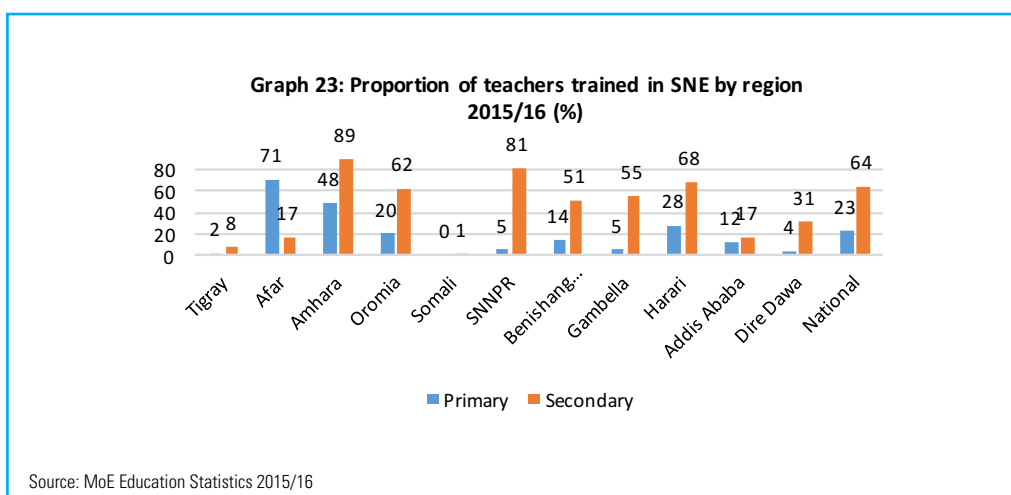
Source: MoE Education Statistics 2015/16

Graph 22: Trends in national pupil teacher ratio Primary and Secondary



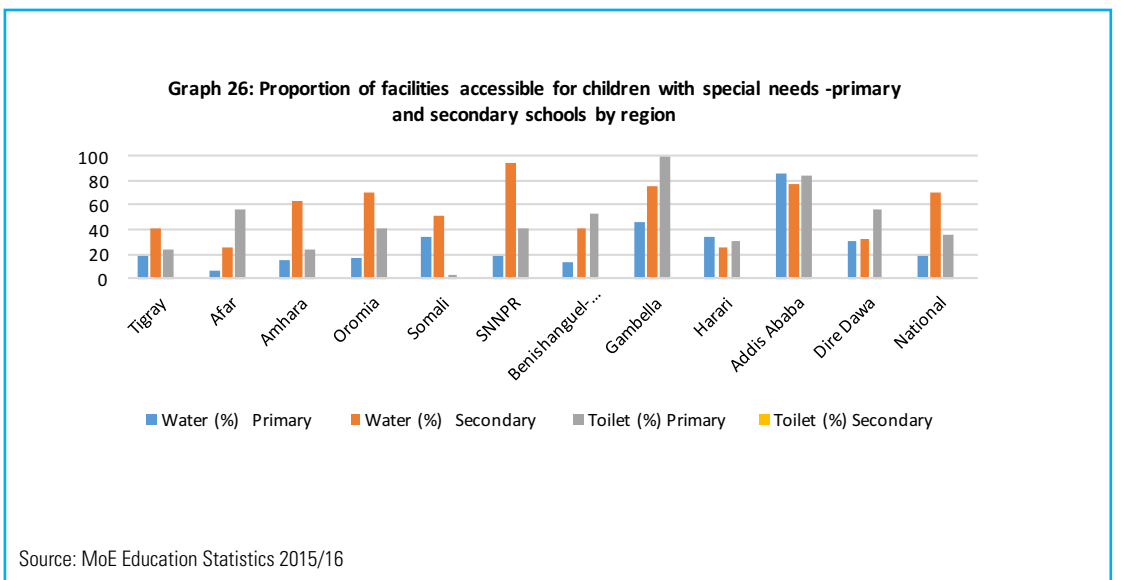
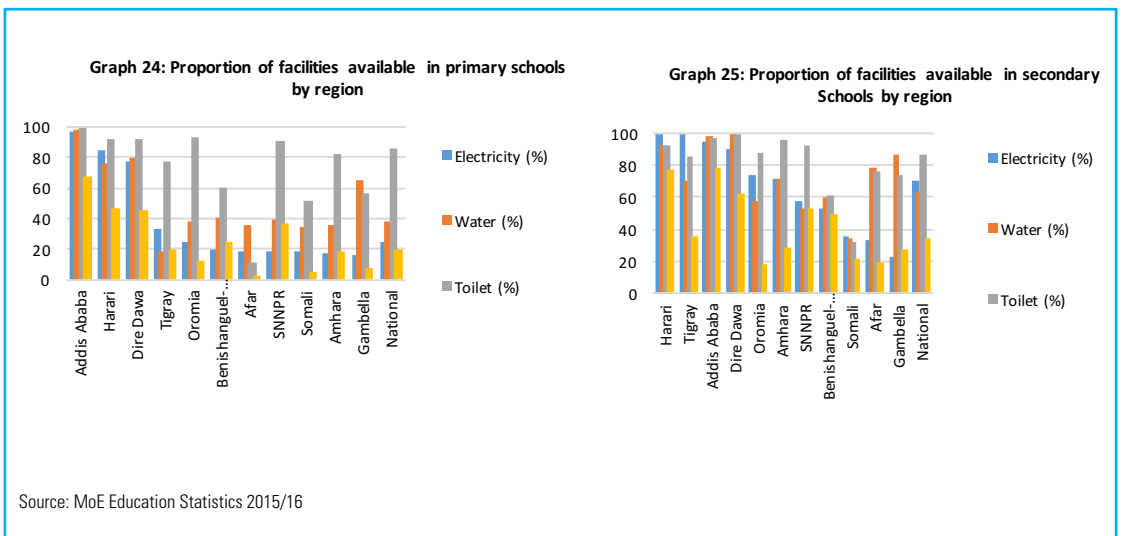
Source: MoE Education Statistics 2015/16

Enrollment			
Indicator		Source	Value
National gross enrollment of students with disability	Pre-primary	Source: MoE Education Statistics 2015/16	0.7
	Male (%)		0.8
	Female (%)		0.6
	Primary 1-8		8
	Male (%)		9
	Female (%)		7
	Secondary		1.5
	Male (%)		1.7
	Female (%)		1.3
Proportion of teachers trained in Special Needs Education (SNE) 2015/16 (%)			See Graph 23



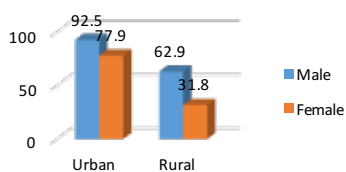
Gender Parity		
Indicator	Source	Value
Gender Parity Index -attendance ratio Primary School	EDHS 2016	1.01(NAR)
	EDHS 2011	1.02 (NAR)
	EDHS 2005	0.91 (GAR)
Gender Parity Index attendance ratio Secondary School	EDHS 2016	1.05 (NAR)
	EDHS 2011	0.95 (NAR)
	EDHS 2005	0.65 (GAR)

School Facilities		
Proportion of Facilities available in Primary Schools by Region		See Graph 24
Proportion of Facilities available in Secondary Schools by Region		See Graph 25
Proportion of Facilities accessible for Children with special needs -Primary and Secondary Schools by Region		See Graph 26

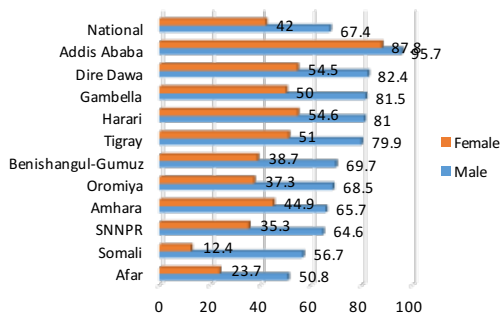


Literacy			
Indicator		Source	Value
Percentage of literacy for person age 15-49	Male	EDHS 2016	67.4
	Female		42
	Male	EDHS 2011	65
			Female
	Male	EDHS 2005	58.9
			Female
Percentage literate by Residence , Region and Wealth quintile			See Graphs 27, 28 &29

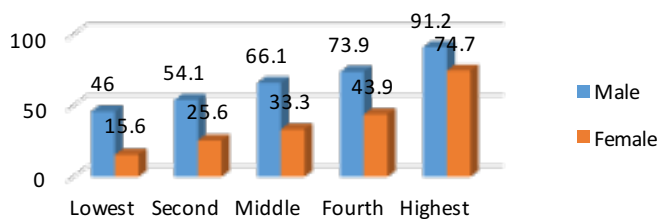
Graph 27: Percentage literate by residence



Graph 29: Percentage literate by region



Graph 28: Percentage literate by residence HH wealth quintile



Source: EDHS 2016



© UNICEF/ETHIOPIA/2014/ ENDRIAS GETACHEW

Sustainable Development Goals (SDGs)

5 GENDER EQUALITY



Achieve gender equality and empower all women and girls

8 DECENT WORK AND ECONOMIC GROWTH



Promote sustained, inclusive and economic growth, full and productive employment and decent work

16 PEACE AND JUSTICE STRONG INSTITUTIONS

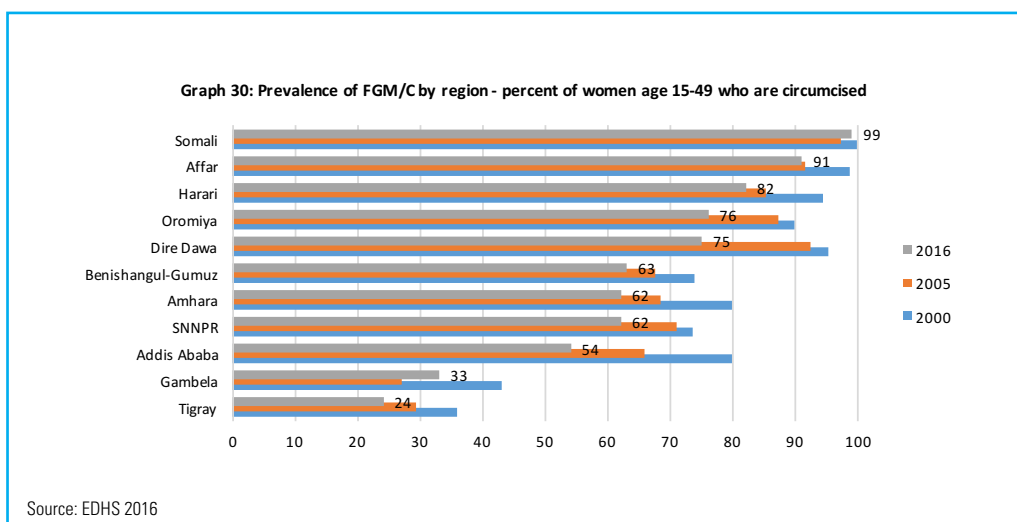


Promote peaceful and inclusive societies for sustainable development, provide access to justice for all and build effective, accountable and inclusive institutions at all levels

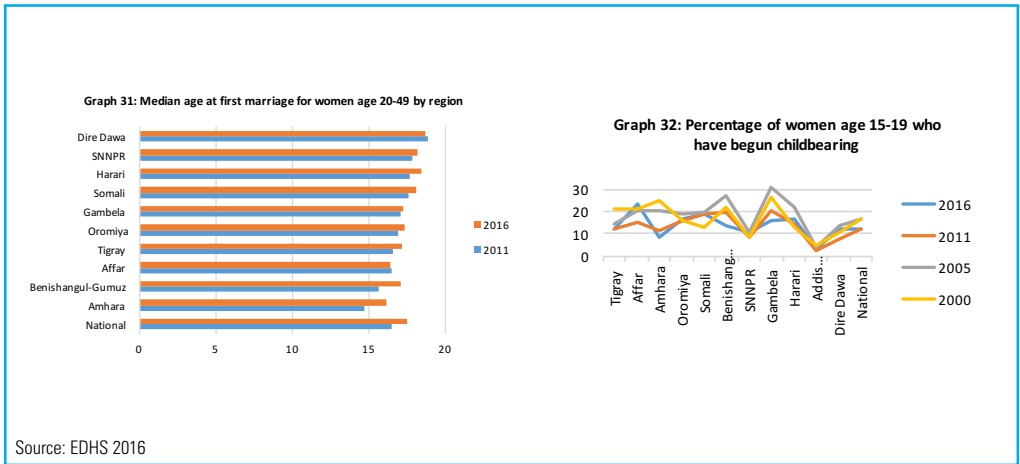
UNCRC Article 2

Non-discrimination, Article 7 Birth Registration, Right from birth to a name, nationality and the right to know and be cared for by parents Article 8 Preservation of identity Article 19 Protection from all forms of violence Article 21 Adoption to ensure best interests of the child Article 22 Rights of refugee children Article 23 Rights of children with disabilities Article 32 Child to be protected from economic exploitation and from performing any work that is likely to be hazardous or to interfere with the child's education, or to be harmful to the child's health or physical, mental, spiritual, moral or social development. Article 34 Right to be protected from sexual exploitation and abuse Article 35 Prevention of abduction, sale and trafficking of children Article 36 Protection from all other forms of exploitation Article 37 Protection from torture, cruel, inhuman or degrading treatment or punishment Article 38 War and Armed conflicts, Article 39 Rehabilitation of child victims Article 40 Juvenile justice.

Child Wellbeing			
Indicator		Source	Value
Birth registration of children under age five (%)	Total	EDHS 2016	2.7
	Male (%)		2.7
	Female (%)		2.6
	Rural		1.6
	Urban		11.5
Percentage of children under 18 years old with both parents dead (%)		EDHS 2016	0.4
		EDHS 2011	0.8
Proportion of children age 5-17 engaged in child labour in the last one week of the survey (%)	Total	CSA and ILO 2016	51
	Male (%)		60.4
	Female (%)		40.7
	Rural		57.9
	Male (%)		67.8
	Female (%)		46.5
	Urban		19.4
	Male (%)		21.7
	Female (%)		17.4
Female Genital Mutilation/Cutting - FGM/C			
Indicator		Source	Value
Female Genital Mutilation/Cutting in age 0-14 women (%)		EDHS 2016	16
Female Genital Mutilation/Cutting among women age 15-49 women (%)		EDHS 2016	65
		EDHS 2005	74
		EDHS 2000	80
Percent of women age 15-49 who are circumcised by Region		See Graph 30	



Child Marriage		
Indicator	Source	Value
The proportion of women married by age 15 among women currently age 15-19 (%)	EDHS 2016	5.7
	EDHS 2011	8
Proportion of women age 20-24 years who were married by the age 18 (%)	EDHS 2016	40.3
	EDHS 2011	41
Median age at first marriage for women age 20-49 -by Region	See Graph 31	
Percentage of women age 15-19 who have begun childbearing	See Graph 32	



Violence Against Women and Children			
Indicator		Source	Value
Percent of women age 15-49 who have ever experienced physical violence since age 15	Total	EDHS 2016	23.3
	Rural		23.9
	Urban		20.9
Percent of women age 15-49 who have ever experienced sexual violence	Total	EDHS 2016	10.1
	Rural		10.8
	Urban		7.3
Attitude toward wife beating: (% of women/ Men 15-59 who agree that a husband is justified in hitting or beating his wife for at least one specific reason)	Total	EDHS 2016	
	Male (%)		27.6
	Female (%)		63
	Rural		
	Male (%)		30.8
	Female (%)		69.8
	Urban		
	Male (%)		39.2
	Female (%)		15.1
	Total	EDHS 2011	
	Male (%)		44.7
	Female (%)		68.4
	Rural		
	Male (%)		50.7
	Female (%)		75.5
	Urban		
	Male (%)		24.8
	Female (%)		45.8
	Total	EDHS 2005	
	Male (%)		51.5
	Female (%)		81
Rural			
Male (%)		55.7	
Female (%)		85.8	
Urban			
Male (%)		27.8	
Female (%)		59	





Sustainable Development Goals (SDGs)



Ensure availability and sustainable management of water and sanitation for all



Make cities and human settlements inclusive, safe, resilient and sustainable



Ensure sustainable consumption and production patterns



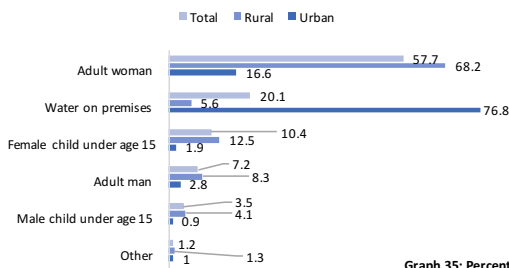
Combat climate change and its impacts

UNCRC Article 24

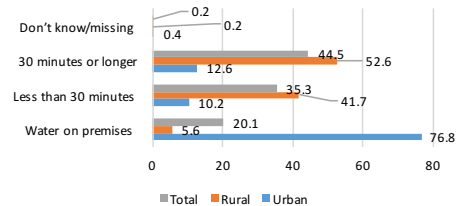
States parties recognize the right of the child to the enjoyment of the highest attainable standard of health and ensure the provision through, inter alia, the application of readily available technology and through the provision of adequate nutritious foods and clean drinking water, taking into consideration the dangers and risks of environmental pollution.

Indicator		Source	Value
(% household using improved drinking water	Total	EDHS 2016	64.8
	Rural		56.5
	Urban		97.3
	Total	EDHS 2011	53.7
	Rural		41.7
	Urban		94.5
	Total	EDHS 2005	61.4
	Rural		56
	Urban		93.7
(% household using improved, not shared sanitation facilities	Total	EDHS 2016	6.3
	Rural		3.9
	Urban		15.9
	Total	EDHS 2011	8.3
	Rural		6.6
	Urban		14.1
	Total	EDHS 2005	6.8
	Rural		4.9
	Urban		18
(% of population using open defecation (no facility/ bush/field)	Total	EDHS 2016	32.9
	Rural		37.7
	Urban		6.8
Person who usually collects drinking water		See Graph 33	
Time taken to obtain drinking water (round trip)		See Graph 34	
Percentage of households where place for hand washing was observed with soap and water by Residence and Region (%)		See Graph 35	

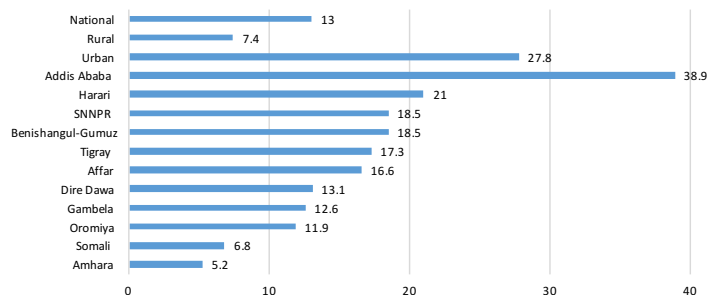
Graph 33: Person who usually collects drinking water at HH



Graph 34: Time to obtain drinking water (round trip)



Graph 35: Percentage of households where place for hand washing was observed with soap and water by residence and region (%)



Source EDHS 2016



© UNICEF ETHIOPIA/2016/NAHOMTESFAVE

Sustainable Development Goals (SDGs)



Global partnership
for sustainable
development

UNCRC Article 4

States Parties shall undertake all appropriate legislative, administrative, and other measures for the implementation of the rights recognized in the present Convention. With regard to economic, social and cultural rights, States Parties shall undertake such measures to the maximum extent of their available resources and, where needed, within the framework of international co-operation.

ACTUAL ODA DISBURSEMENT TO ETHIOPIA BY DONOR JULY 2013-JUNE 2014 (in USD millions)

Donor	Grant	Loan	Technical Assistance
BILATERAL Group (394)	1270.7	234.7	25
European Union (51)	115.5	0	0
International Financial Institutions (147)	131.9	1036.3	0
UN Group (92)	403.95	0	0
TOTAL (684)	1921.9	1271	25

Source DAG Annual Report 2013-2014



Ministry of Women and Children Affairs

Tel 251 11 552 8394

Email: mowcy1@gmail.com

www.mowca.gov.et



Tel 251 11 518 4000

Email: ethcommunication@unicef.org

www.unicef.org/ethiopia