

# Emergency Nutrition Response in Ethiopia: Oromia

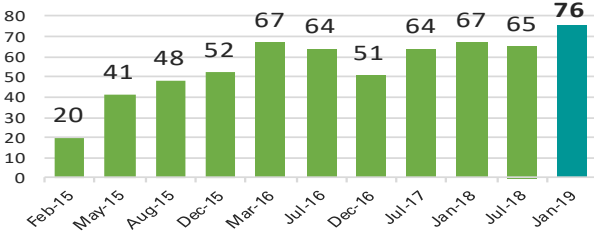
As of 15 April 2019

## Context

**76** out of 265 woredas classified as hotspot 1 (severely affected districts)\*  
 Population estimated to be **37.2 million**, of which **20 million** is from **0-19 yrs of age** (2019 CSA projection)  
**1.048 million** children and PLW with MAM expected in 2018\*\*  
**195,579** children with SAM expected in 2019\*\*\*

\*Latest updated figures from the January 2019 Review of the Humanitarian and Disaster Resilience Plan . \*\*\*As per January 2019 estimated caseload. \*\*The Revised figure was discussed during the August 2018 Mid Year Review

## Hotspot Priority 1 Woredas, 2015-2019



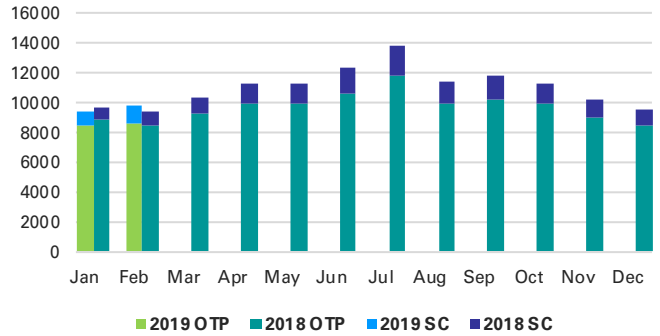
## Coordination

- UNICEF is supporting Regional Emergency Nutrition Coordination Unit (R-ENCU)
- UNICEF is participating in relevant regional and zonal level coordination meetings

## To Facilitate Rapid Response

- 2 UNICEF staff supporting emergency
- 6 CMAM monitors deployed

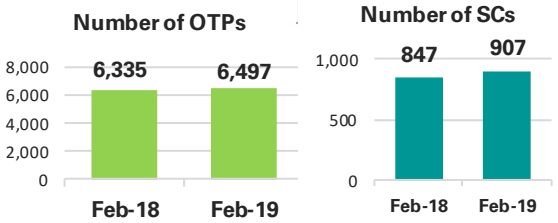
## SAM Admissions, 2018-2019



**19,292** children admitted with SAM in Jan 2019-Feb 2019, out of whom **2,170** were admitted to inpatient care (**11%** of total SAM admissions)  
**80%** reporting rate

In Feb 2019, **9,881** children were admitted for SAM treatment with reporting rate of **79%**. The Feb 2019, SAM admissions showed slight increase by **5%** as compared to Feb 2018 in Oromia Region.

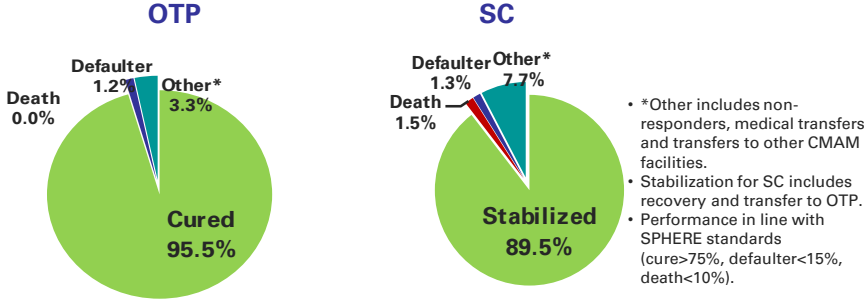
## Expansion of SAM Facilities, 2018-2019



## Overview of Region

- Oromia receives short *belg* rains from February to May. The main rainy season, *kiremt*, falls between June-September, affecting the main *mehar* harvest in November-December. The dry *bega* season typically spans between October and February in the region, while bringing rains (*hageya*) over the southern part. Admissions tend to increase during the main hunger gap in the third quarter of the year.
- In Jan 2019-Feb 2019, **38.4%** of total SAM admissions were reported from Oromia Region.
- SAM admissions in West Guji zone have resumed to same level as before the crisis (**475** in Nov, with 94% RR). UNICEF continue to coordinate with partners to provide outreach services and full nutrition treatment package to the IDP sites.

## SAM Programme Performance in 2019



\*Other includes non-responders, medical transfers and transfers to other CMAM facilities.  
 • Stabilization for SC includes recovery and transfer to OTP.  
 • Performance in line with SPHERE standards (cure>75%, defaulter<15%, death<10%).