

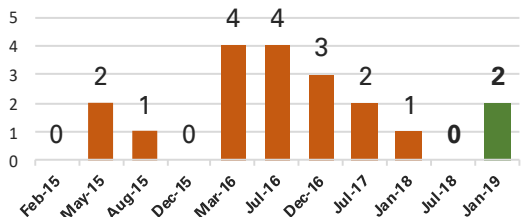
Nutrition Response in Ethiopia: Gambella

As of 15 April 2019

Context

2 out of 14 woredas classified as hotspot 1 (severely affected districts)*
 Population estimated to be **0.5 million of which 265,378 are 0-19 yrs of age** (2019 CSA projection)
5,000 children and PLW with MAM expected in 2018**
2,057 children with SAM expected in 2019***
 *Latest updated figures from the January 2019 Review of the Humanitarian and Disaster Resilience Plan . ***As per January 2019 estimated caseload. **The Revised figure was discussed during the August 2018 Mid Year Review

Hotspot Priority 1 Woredas, 2015-2019



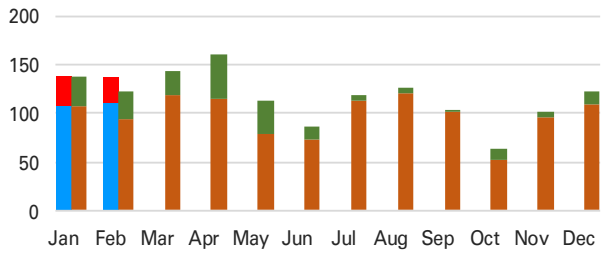
Coordination

- UNICEF is participating in relevant regional and zonal level coordination meetings

To Facilitate Rapid Response

- 1 UNICEF staff supporting emergency
- 3 CMAM monitors deployed

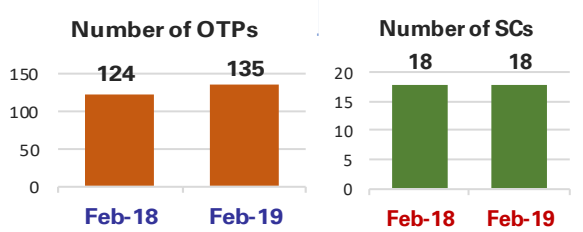
SAM Admissions, 2018-2019



270 admitted with SAM in Jan 2019 –Feb 2019, out of whom **43** were admitted to inpatient care (**16%** of total SAM admissions)
94% reporting rate

- In February 2019, **137** children were admitted into SAM treatment with reporting rate of **94.8 %**. There is a slight increase of 10 % in the number of SAM admission compared to the same month last year, 2018.

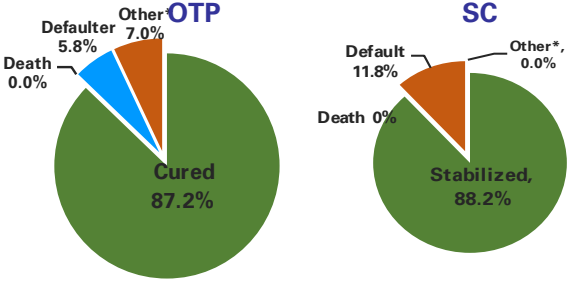
Expansion of SAM Facilities, 2018-2019



Overview of Region

- Gambella has rainy season in Jul-Nov. During this season, heavy rains and frequent flooding often impede access to health facilities. People also migrate in these months, resulting in the rise of defaulters. Following the rains, malaria and other water-related diseases become most prevalent in the second half of the year. Overall health and nutrition service utilization improves in the dry season from Dec-Apr, and the SAM admissions also tend to reach the peak.
- In Jan 2019- Feb 2019, **0.54%** of the national SAM burden was found in Gambella Region, which is the lowest SAM burden.

SAM Programme Performance in 2019



- *Other includes non-responders, medical transfers and transfers to other CMAM facilities.
- Stabilization for SC includes recovery and transfer to OTP.
- Performance in line with SPHERE standards (cure>75%, defaulter<15%, death<10%).