

Emergency Nutrition Response in Ethiopia: Amhara

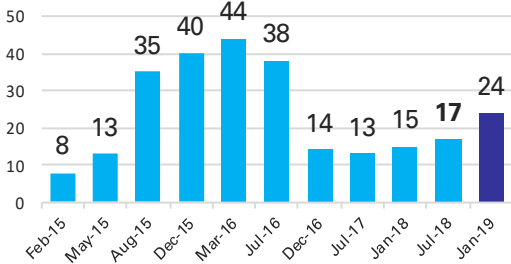
As of 15 April 2019

Context

24 out of 129 woredas classified as hotspot 1 (severely affected districts)*
 Population of **22 million of 10 million (0-19 yrs age)** (CSA projection)
550,000 children and PLW with MAM expected in 2018**
53,248 children with SAM expected in 2019***

*Latest updated figures from the January 2019 Review of the Humanitarian and Disaster Resilience Plan. ***As per January 2019 estimated caseload. **The Revised figure was discussed during the August 2018 Mid Year Review

Hotspot Priority 1 Woredas, 2015-2019



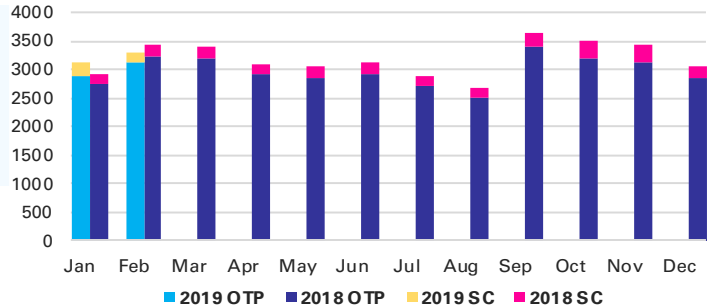
Coordination

- UNICEF is supporting Regional Emergency Nutrition Coordination Unit (R-ENCU)
- UNICEF is participating in relevant regional and zonal level coordination meetings

To Facilitate Rapid Response

- 2 UNICEF staff supporting emergency
- 3 CMAM monitors deployed

SAM Admissions, 2018-2019



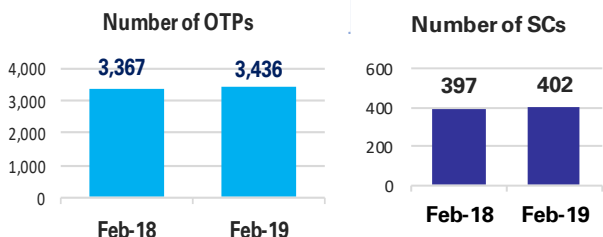
6,422 children admitted with SAM in Jan 2018-Feb 2019, out of whom **390** were admitted to inpatient care (**6%** of total SAM admissions) **90%** reporting rate

A total of **3,298** children were admitted to SAM treatment in Feb 2019, with a reporting rate of **88%**. In Feb 2019, SAM admissions slightly lower by **4%** as compared to the same month in 2018.

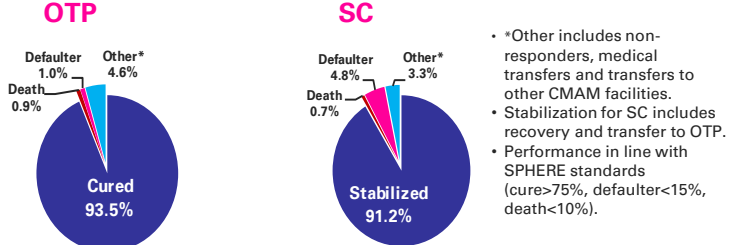
Overview of Region

- Amhara receives short *belg* rains from February to May. The main rainy season, *kiremt*, falls between June-September, affecting the main *meher* harvest in November-December. The dry *bega* season spans typically between October and February in the region, while bringing a wetter weather over the southern part of the country. Admissions tend to increase during the main hunger gap in the third quarter of the year.
- In Jan 2019-Feb 2019, 13% of total SAM admissions of Ethiopia were reported from Amhara Region.
- The number of IDPs is increasing in Amhara, as violence is escalating in border regions. Over 42,000 people are estimated to be displaced in Amhara.
- The reporting rate in North Gonder zone has drastically declined over the past months, which wrongly decreases the overall admissions figure for the region.

Expansion of SAM Facilities, 2018-2019



SAM Programme Performance in 2019



*Other includes non-responders, medical transfers and transfers to other CMAM facilities.
 • Stabilization for SC includes recovery and transfer to OTP.
 • Performance in line with SPHERE standards (cure>75%, defaulter<15%, death<10%).