

Emergency Nutrition Response in Ethiopia: Afar

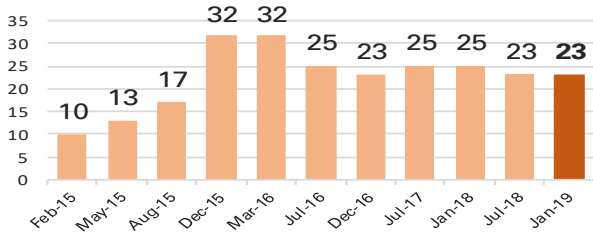
As of 15 April 2019

Context

23 out of 32 woredas classified as hotspot 1 (severely affected districts)*
 Population of **1.9 million of 848,458 (0-19)**(CSA projection)
285,337 children and PLW with MAM expected in 2018**
25,493 children with SAM expected in 2019***

*Latest updated figures from the January 2019 Review of the Humanitarian and Disaster Resilience Plan . ***As per January 2019 estimated caseload. **The Revised figure was discussed during the August 2018 Mid Year Review .

Hotspot Priority 1 Woredas, 2015-2019



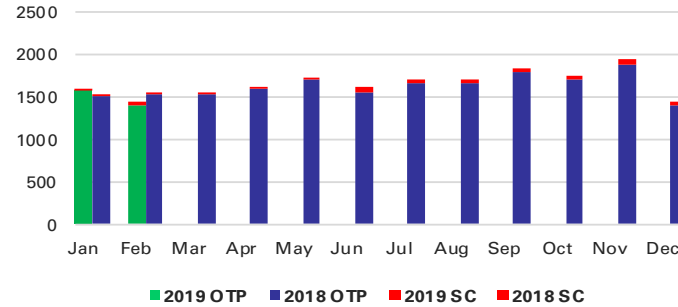
Coordination

- UNICEF is supporting Regional Emergency Nutrition Coordination Unit (R-ENCU)
- UNICEF is participating in relevant regional and zonal level coordination meetings

To Facilitate Rapid Response

- 2 UNICEF staff supporting emergency
- 5 CMAM monitors deployed

SAM Admissions, 2018-2019



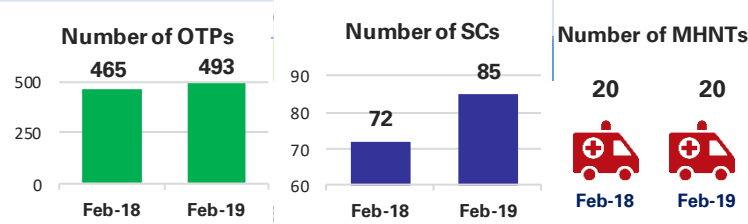
In February 2019, **1449** children were admitted for SAM treatment with reporting rate of **95.2%**. The February 2019 SAM admissions has decreased by **7%** compared to the same month last year, 2018.

3048 children admitted with SAM in Jan – Feb 2018, out of whom **59** were admitted to inpatient care (**2%** of total SAM admissions) with **96%** reporting rate.
In Feb 2019, 18% of OTP admissions were managed by the MHNTs.
 From Jan 2019- Feb 2019, **6%** of total SAM admissions of Ethiopia were reported from Afar Region.

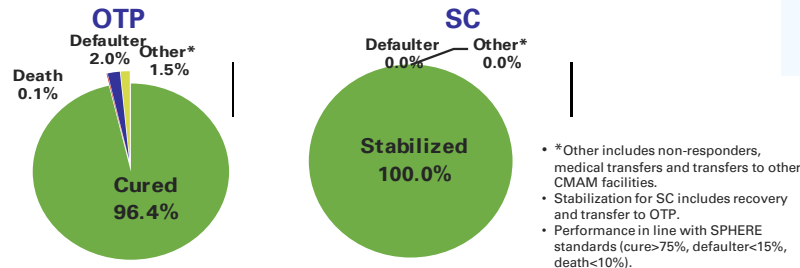
Overview of Region

- In Afar, 2018 Karm rains (July- September) was reported as below average, and critical for water replenishment and regeneration of pasture, especially long dry and cold Gilal season (October-December). Due to the "Dadae rains (Mid December) was delay, very small amount and erratic distribution rains in the most parts of the region resulted serious water shortage and food insecurity.
- As per February 2019, CHD screening conducted in the region show a proxy GAM and rates were found 17.7% and 0.8%, respectively with screening coverage of 94% in average.

Expansion of SAM Facilities, 2018-2019



SAM Programme Performance in 2019



* Other includes non-responders, medical transfers and transfers to other CMAM facilities.
 • Stabilization for SC includes recovery and transfer to OTP.
 • Performance in line with SPHERE standards (cure>75%, defaulter<15%, death<10%).

In Afar, the current nutrition situation was classified as serious level with GAM ranging between 11.2 to 11.7 percent and SAM of 0.8 percent in Adaar and Abala Woredas, respectively (as per SMART survey Jan2019).