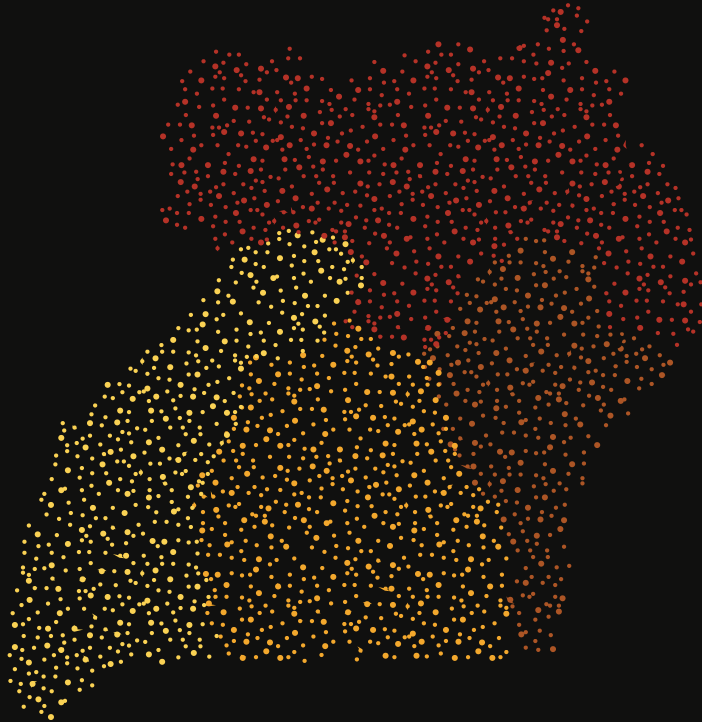


UGANDA

POVERTY MAPS 2012/13



THE REPUBLIC OF UGANDA



THE WORLD BANK
IBRD • IDA



unicef 
for every child

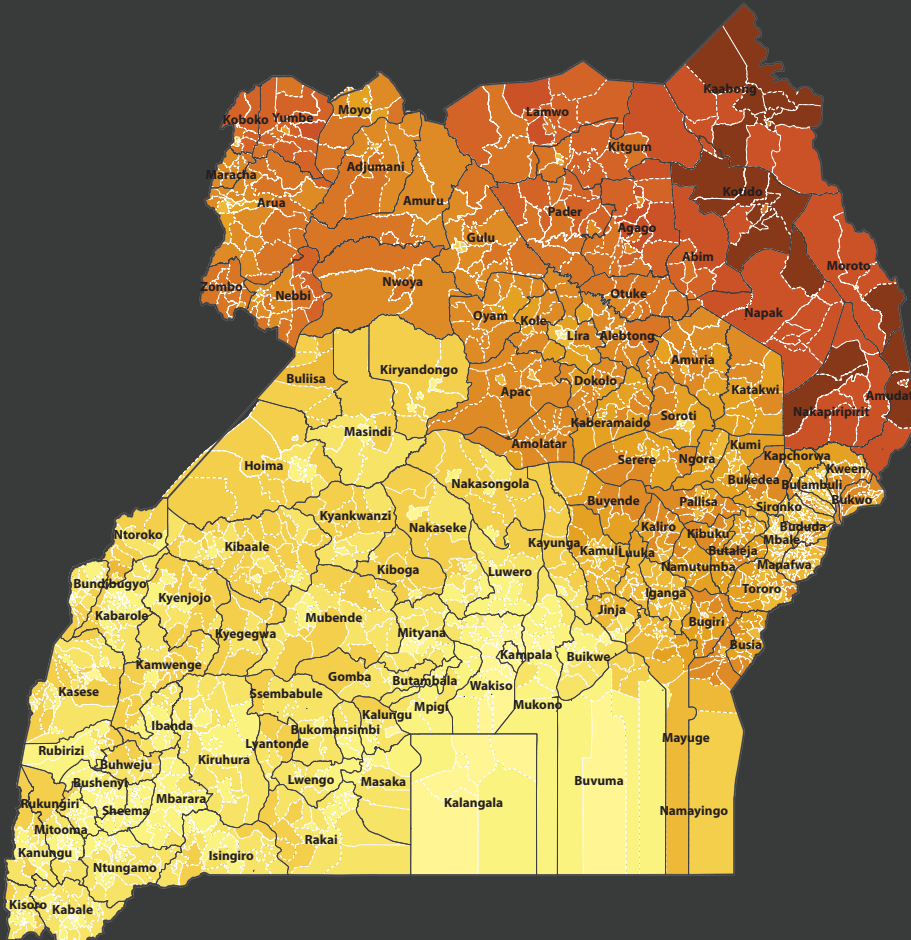
UGANDA

POVERTY MAPS 2012/13

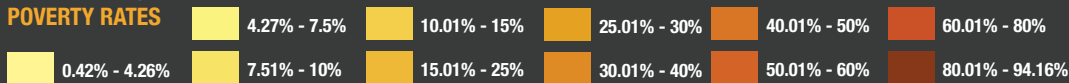
Capitalizing on the depth and breadth of the socio-economic indicators available in the UNHS 2012/13 and the universal coverage of the National Housing and Population Census 2014, the analysis embedded in these poverty flashcards applies Elbers, et al. (2003) Small Area Estimation (SAE) technique to generate four sets of disaggregated poverty maps capturing regional heterogeneity at district and sub-county level. This publication further provides a map for Kampala city uniquely disaggregated to identify pockets of poverty within Uganda's capital at parish level.

The inclusion of child poverty specific estimates across all geographic regions represents an important innovation. With close to 60% of the population below 18 years of age, and over 75% below the age of 35 years, Uganda's vision to become a middle income country by 2040 remains highly contingent on Government's ability to safeguard children's right to grow to their full potential and contribute to national development. Moreover, the persistence of poverty in the north and north-east further increases regional disparities and threatens to slow down the pace towards attaining middle income status. In this respect, the poverty maps presented herein offer strategic insight to improve targeting and prioritize equitable financial allocations aimed at building resilience by reducing poverty and minimizing vulnerability.

PER-CAPITA POVERTY (2012/13)

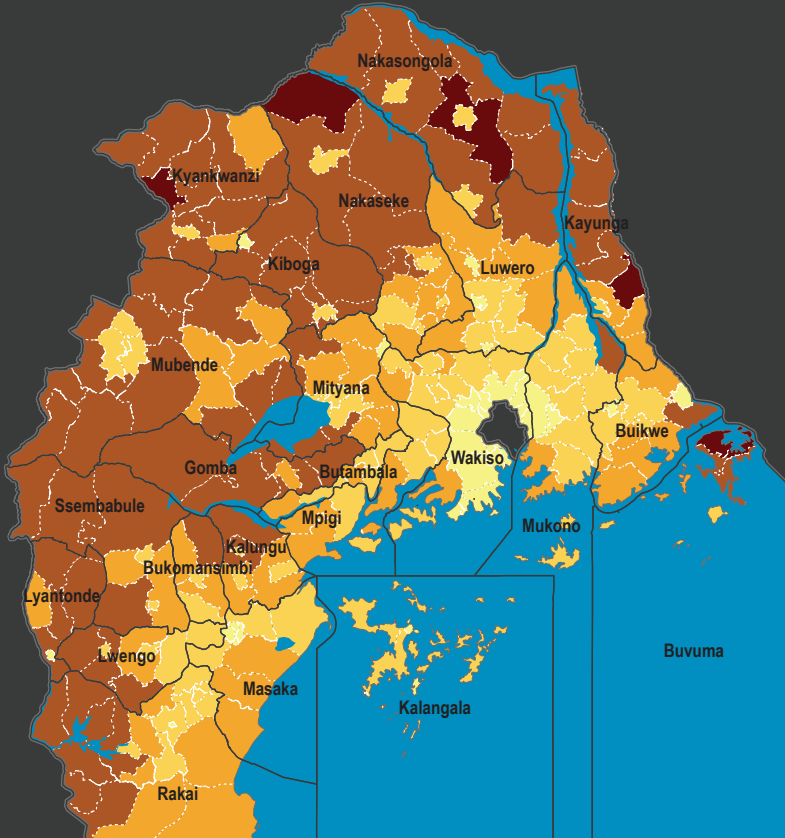


POVERTY RATES



CENTRAL REGION

PER-CAPITA POVERTY (2012/13)



POVERTY RATES

0.8% - 3%

3.1% - 7%

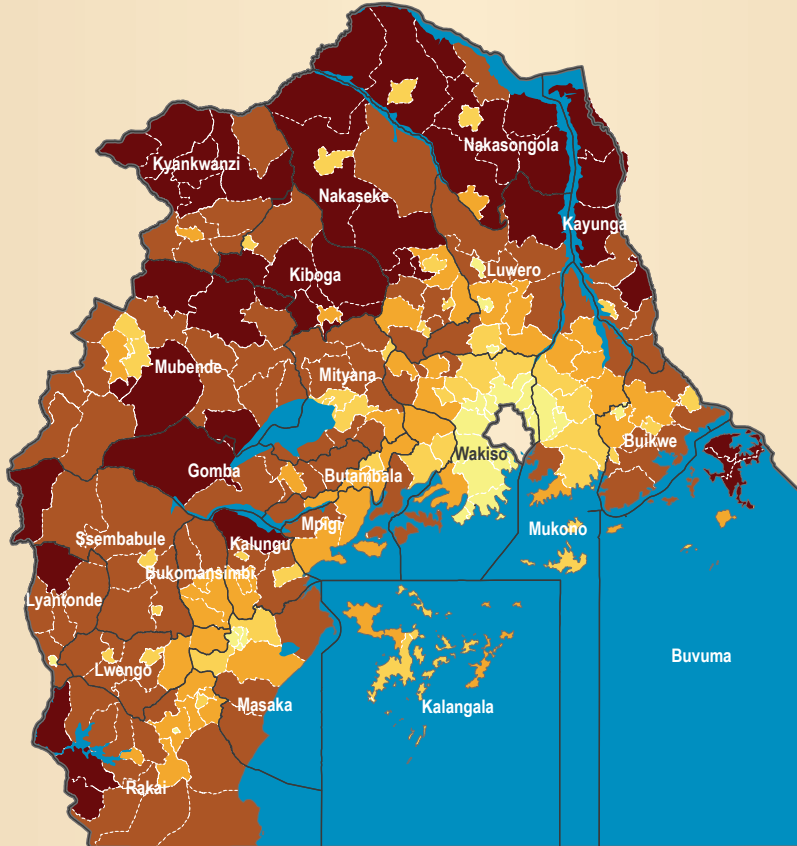
7.1% - 9%

9.1% - 12%

12.1% - 15.1%

CENTRAL REGION

CHILD POVERTY (2012/13)



POVERTY RATES

0.8% - 3%

3.1% - 7%

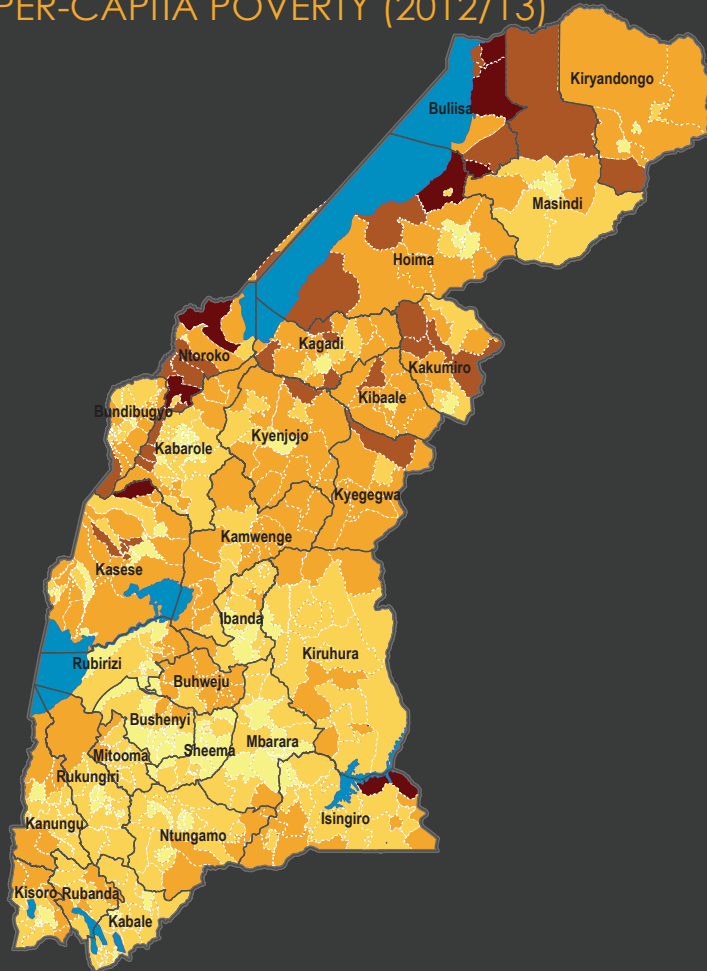
7.1% - 9%

9.1% - 12%

12.1% - 15.1%

WESTERN REGION

PER-CAPITA POVERTY (2012/13)



POVERTY RATES

0.9% - 6%

6.1% - 9%

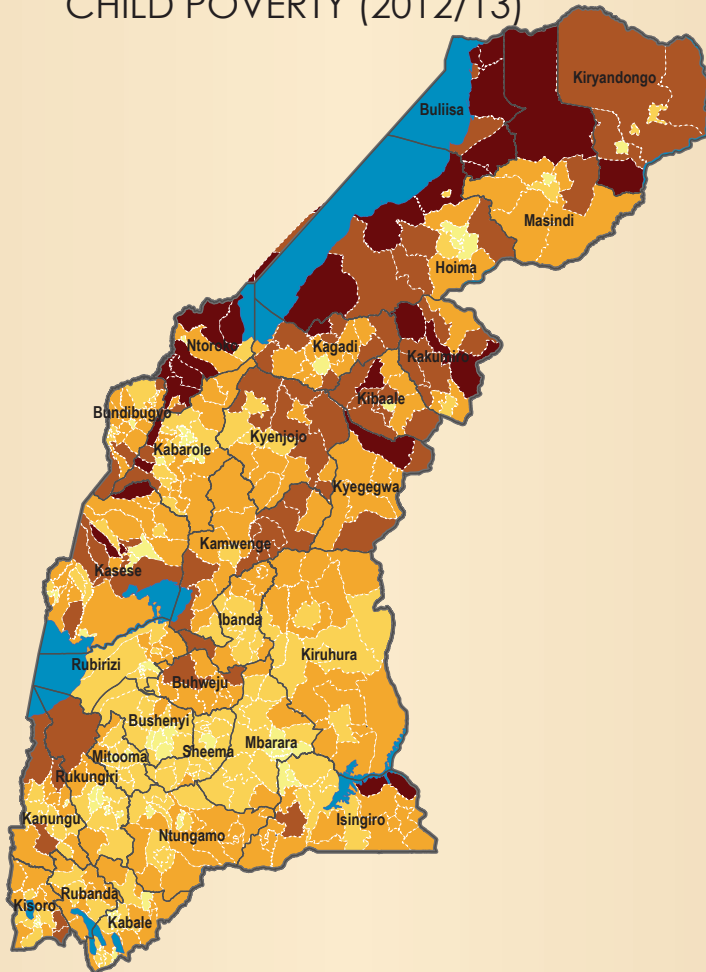
9.1% - 12%

12.1% - 14%

14.1% - 21%

WESTERN REGION

CHILD POVERTY (2012/13)



POVERTY RATES

0.9% - 6%

6.1% - 9%

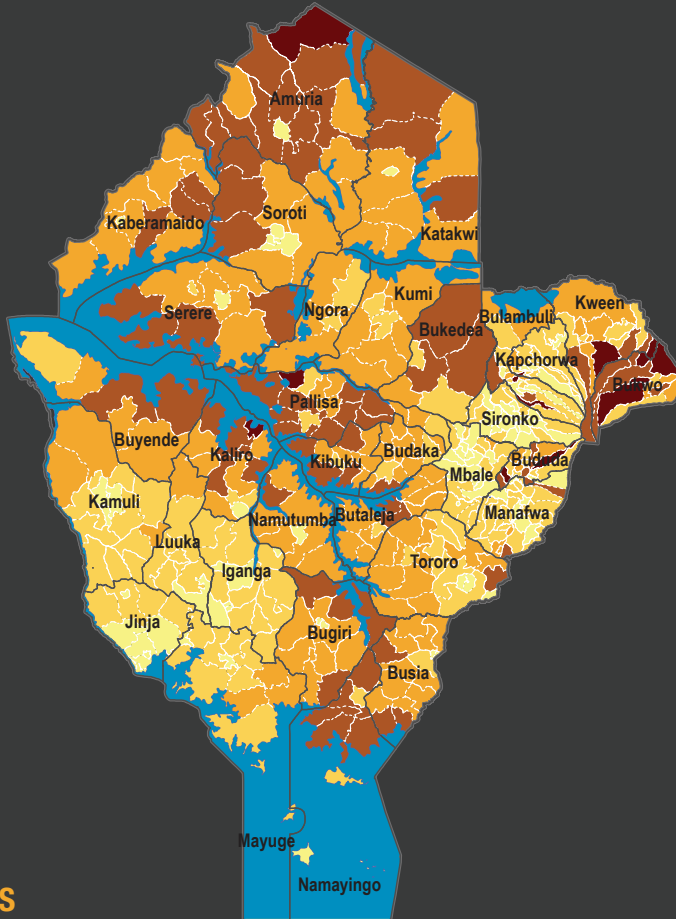
9.1% - 12%

12.1% - 14%

14.1% - 21%

EASTERN REGION

PER-CAPITA POVERTY (2012/13)



POVERTY RATES

9.2% - 18%

18.1% - 25%

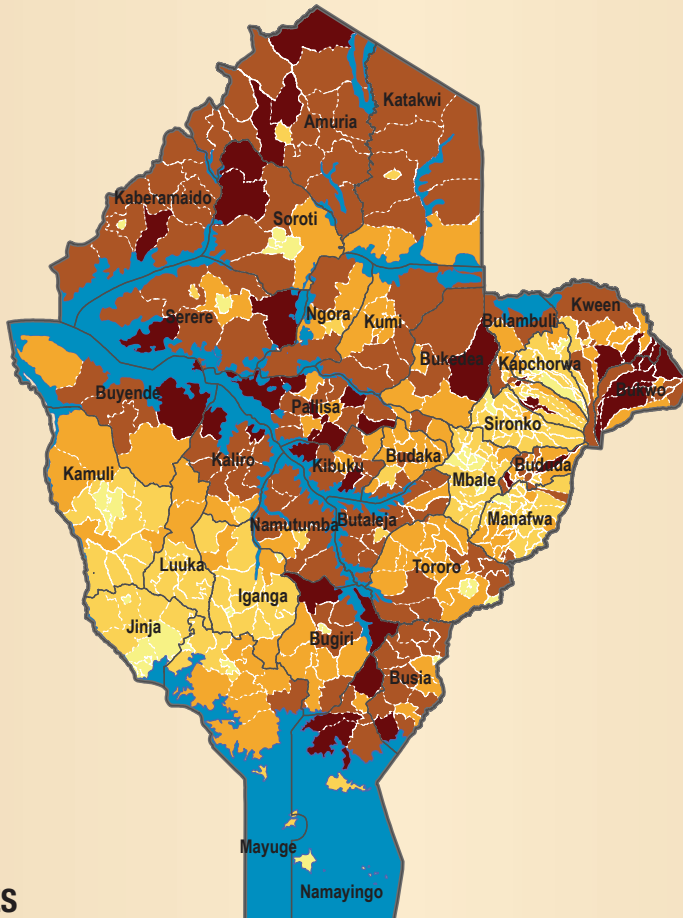
25.1% - 30%

30.1% - 35%

35.1% - 55%

EASTERN REGION

CHILD POVERTY (2012/13)



POVERTY RATES

9.2% - 18%

18.1% - 25%

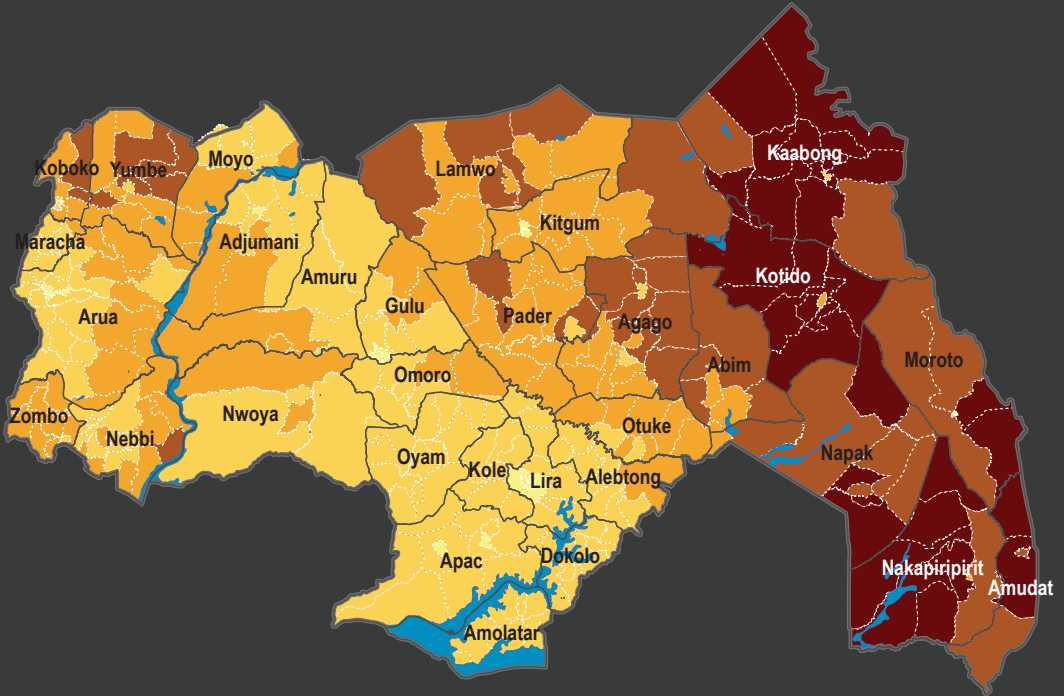
25.1% - 30%

30.1% - 35%

35.1% - 55%

NORTHERN REGION

PER-CAPITA POVERTY (2012/13)



POVERTY RATES

6.4% - 20.0%

20.1% - 40.0%

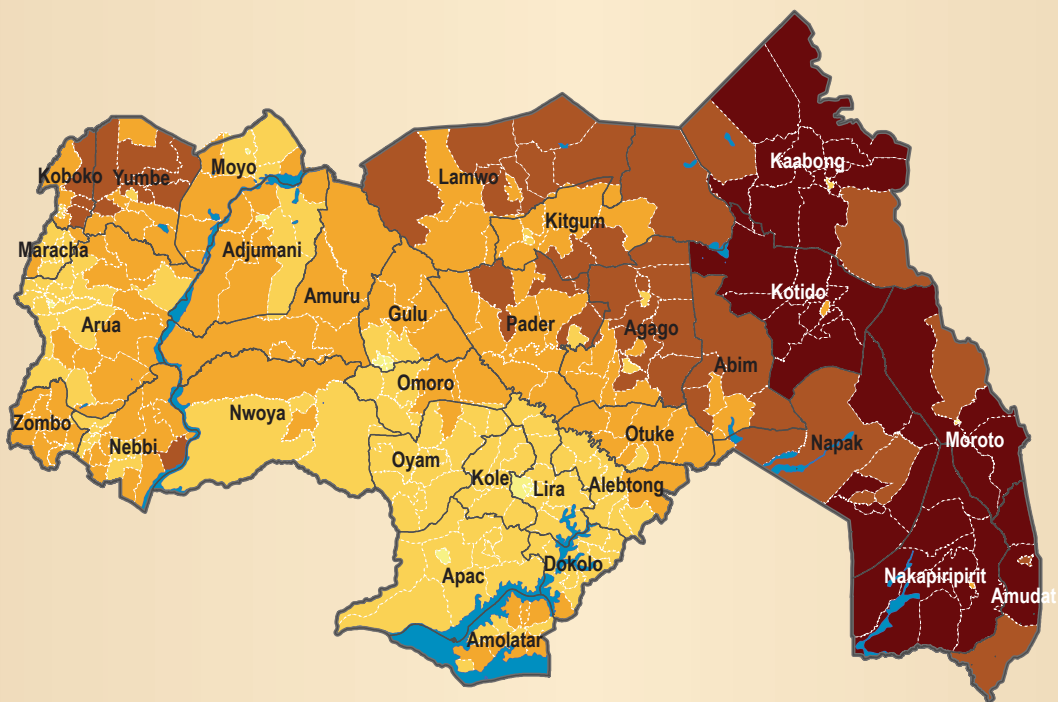
40.1% - 55.0%

55.1% - 75.0%

75.1% - 95.0%

NORTHERN REGION

CHILD POVERTY (2012/13)



POVERTY RATES

6.4% - 20.0%

20.1% - 40.0%

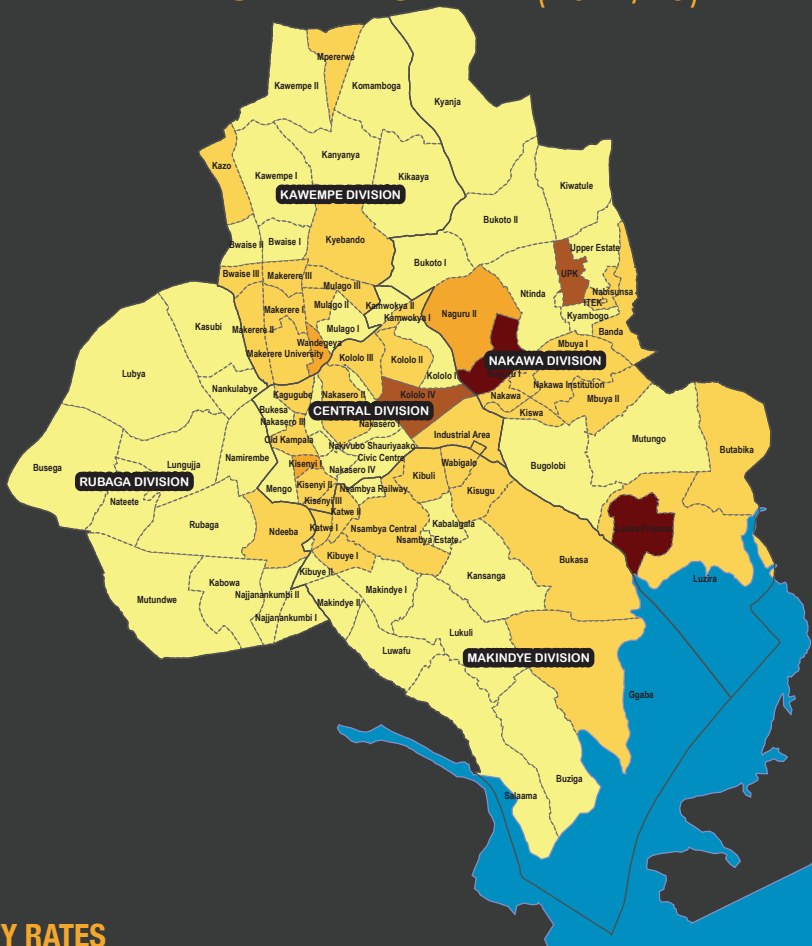
40.1% - 55.0%

55.1% - 75.0%

75.1% - 95.0%

KAMPALA DISTRICT

PER-CAPITA POVERTY (2012/13)



POVERTY RATES

0% - 0.5%

0.6% - 1.5%

1.6% - 3%

3.1% - 5%

5.1% - 14%

