



unicef   
for every child

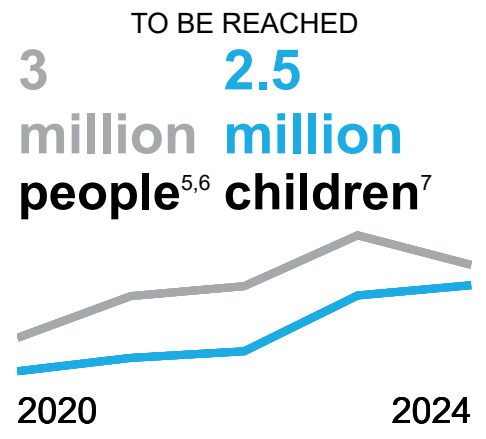
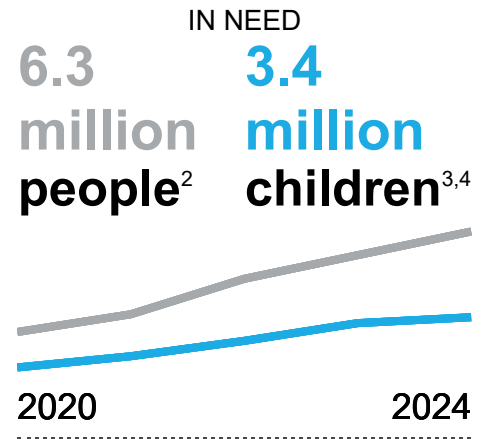
## Humanitarian Action for Children

A UNICEF staff member with a baby at Health and Social Promotion center in Fada, in the east of Burkina Faso. Mothers were coming to the center for the routine vaccination of their babies.

# Burkina Faso

### HIGHLIGHTS

- Burkina Faso continues to face a multidimensional humanitarian crisis that has worsened since 2019. This situation has led to massive internal displacement (over 2 million people<sup>1</sup>). The number of schools closed due to attacks has increased by 50 per cent in one year, impacting over 1 million children's learning. This represents a quarter of all schools in Burkina Faso, and almost half of all schools closed due to insecurity in the entire West and Central African region. Armed groups have effectively blockaded areas where more than 1 million people live or have sought refuge, depriving them of free movement and necessary supplies.
- More than one in five children in Burkina Faso suffer from acute malnutrition. The latest nutrition SMART survey in July 2023 found only 3 of 18 municipalities had a moderate level of malnutrition; all others ranked either very high or high for malnutrition.
- UNICEF aims to reach 2.5 million children with a multi-sectoral package of services, including in enclaves where access to humanitarian aid is limited.
- UNICEF needs US\$239 million in 2024 to continue investing in innovative mechanisms that address short- and long-term vulnerabilities among women and children, particularly for water, sanitation and hygiene (WASH), child protection and education.



### KEY PLANNED TARGETS



**405,175**

children vaccinated against measles



**800,000**

children/caregivers accessing community-based mental health and psychosocial support



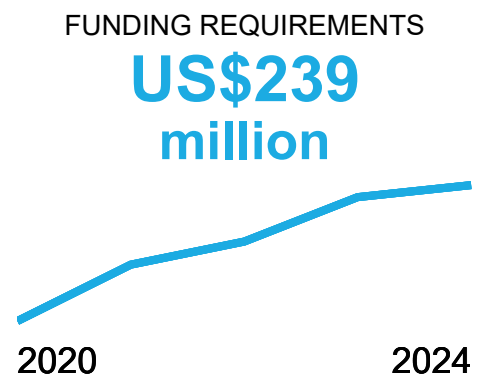
**750,642**

children accessing formal or non-formal education, including early learning



**800,000**

people accessing a sufficient quantity and quality of water



Figures are provisional and subject to change upon finalization of the inter-agency planning documents.

## HUMANITARIAN SITUATION AND NEEDS

Burkina Faso, a landlocked country with an estimated population of 20 million<sup>8</sup>, continues to be affected by a serious multidimensional crisis, marked by factors including armed violence/insecurity; economic hardship<sup>9</sup>; demographic pressure; political fragility and climate change shock. This all has significant consequences on sustainable development, peace and respect for the child rights. Insecurity remains widespread and affects almost the entire country, resulting in the massive internal displacement of over 2 million<sup>10</sup> people (58 per cent children) and reduced humanitarian, particularly via road access.

Access to basic social services continues to be challenging in several regions. In the health sector, 3.6 million people have been deprived of access to care, with 397 health facilities closed (19 per cent of facilities nationwide) and 381 operating at minimum capacity (18 per cent). Within this context, there has been a resurgence of disease outbreaks, including measles, polio, dengue fever<sup>11</sup> and Chikunguya<sup>12</sup>. Food insecurity has increased<sup>13</sup>, and the nutrition situation has worsened<sup>14</sup>. An estimated 172,133 children under five in the country suffer from wasting, out of whom around 84 per cent are in the most conflict-affected regions, including in hard-to-reach areas.

Burkina Faso is also experiencing a major water crisis, with structural problems that precede the crisis compounded by insecurity<sup>15</sup> and the consequences of climate change. An estimated 3.2 million people have lost access to water due to insecurity.<sup>16</sup> According to UNICEF's Children's Climate Risk index<sup>17</sup>, Burkina Faso is one of the worst 20 countries for climate change effects on children, and these are likely to cause a severe deterioration of the humanitarian situation.

The education sector, already fragile before the crisis with 1 out of 2 school-aged children out-of-school in 2014<sup>18</sup>, has further deteriorated, with 6,149 schools closed (24 per cent of schools) due to insecurity and attacks on infrastructure and staff<sup>19</sup>, depriving more than 1 million children (more than 500,000 girls)<sup>20</sup> of access to education, and affecting more than 31,000 teachers<sup>21</sup>.

In this difficult humanitarian context, children remain the most affected and exposed to all forms of violence, neglect, exploitation, including child labour and recruitment into armed groups. According to 2022 SG Report, a total of 1,568 violations against 1,157 children was verified in 2022, including 366 grave violations against 294 children that had occurred in previous years and verified in 2022. This information does not represent the full scale of violations against children but provides United Nations-verified trends in grave violations against children, given that access for monitors remains a challenge.

## SECTOR NEEDS<sup>22</sup>



**3.5 million**  
people in need of  
health assistance



**1.5 million**  
people in need of  
nutrition assistance<sup>23</sup>



**2 million**  
children in need of  
protection services



**2.2 million**  
children in need of  
access to school



**3.7 million**  
people lack access to  
safe water

## STORY FROM THE FIELD



Juliette, 14, still dreams of becoming a teacher one day, even if the armed conflict has forced her to leave her native Dablo and its school, in Burkina Faso's Centre North Region. "We left Dablo to come to Kaya because of the conflict. One day, we were in class, and they came to take us out, and we fled," recounts Juliette. In Burkina Faso, over 2 million people have fled their homes due to violence. In Kaya, Juliette received a school kit to return to school.

UNICEF distributed 108,300 school kits to most vulnerable children in regions affected by the crisis.

**[Read more about this story here](#)**

Juliette, 14, a displaced adolescent in Kaya receives a school kit from UNICEF to return to school.

## HUMANITARIAN STRATEGY

In 2024, UNICEF will continue to support the government to address the most urgent needs of 6.3 million people, including 3.4 million children affected by recurrent and protracted humanitarian crises. UNICEF will strengthen the core strategic pillars which have guided its programme delivery, namely implementation of the triple nexus and localization; provision of multi-sectoral services; and youth empowerment. UNICEF will also strengthen its collaboration with others UN agencies through joint Emergency Response Team operations (ERT) to reach more vulnerable people in hard-to-reach or underserved areas. UNICEF will develop the 3RC (rapid response and community resilience) approach by building the capacities of local actors, communities and institutions to improve their resilience to shocks.

UNICEF will support public health emergency preparedness, the strengthening of epidemiological surveillance<sup>24</sup> and scaling up the provision of healthcare to populations including through community-based approaches. This includes task shifting to promote and provide healthcare in hard-to-reach areas; strengthening the capacity of health structures for nutrition surveillance and integrated nutrition response<sup>25</sup>; and the delivery of medical/nutritional therapeutic products.

To improve access to quality WASH services, UNICEF will reinforce support to community resilience and sustainability, working with local partners to ensure minimum access to services in hard-to-reach communities, while strengthening the capacity of water utility authorities to ensure the delivery of safe drinking water in urban areas.

UNICEF will improve access to education by strengthening the education system and its ability to provide quality<sup>26</sup>, whether through non-formal, remedial, vocational, accelerated and/or formal education, both in-person and through radio. Education programmes will include a psychosocial component through the Safe Schools approach.

To ensure effective prevention, accountability and response to grave child rights violations and other violence in humanitarian crises, UNICEF will continue to build the capacity of community actors for effective monitoring/data collection of MRMs and other child rights violations. UNICEF will also support the implementation of the transfer protocol between the UN system and the BF government on the transfer of CAAFAG. To achieve this goal, UNICEF will focus on capacity building of community actors in the PC, training of government forces on children's rights, support for mine and UXO risk education, awareness campaigns, as well as GBV prevention and response programs, and ensure that affected children (UASC, CAAFAG) receive MHPSS support and appropriate response through case management.

UNICEF will continue to support accountability towards affected populations including capacity building for community actors; strengthening mechanisms to collect and process complaints and ensure feedback; using interpersonal channels to encourage community involvement and raise awareness; and working with community radio stations.

Progress against the latest programme targets is available in the humanitarian situation reports: <https://www.unicef.org/appeals/burkina-faso/situation-reports>

This appeal is aligned with the revised Core Commitments for Children in Humanitarian Action, which are based on global standards and norms for humanitarian action.

## 2024 PROGRAMME TARGETS



### Health (including public health emergencies)

- **405,175** children vaccinated against measles, supplemental dose<sup>27</sup>
- **561,720** children and women accessing primary health care in UNICEF-supported facilities<sup>28</sup>
- **78,930** Households that received at least two long-last insecticide-treated nets in humanitarian context



### Nutrition

- **1,200,000** children 6-59 months screened for wasting<sup>29</sup>
- **179,252** children 6-59 months with severe wasting admitted for treatment<sup>30</sup>
- **661,000** primary caregivers of children 0-23 months receiving infant and young child feeding counselling<sup>31</sup>



### Child protection, GBViE and PSEA

- **800,000** children, adolescents and caregivers accessing community-based mental health and psychosocial support<sup>32</sup>
- **120,000** women, girls and boys accessing gender-based violence risk mitigation, prevention and/or response interventions<sup>33</sup>
- **70,000** people with safe and accessible channels to report sexual exploitation and abuse by personnel who provide assistance to affected populations
- **6,000** unaccompanied and separated children provided with alternative care and/or reunified



### Education<sup>34</sup>

- **750,642** children accessing formal or non-formal education, including early learning<sup>35</sup>
- **675,578** children receiving individual learning materials<sup>36</sup>
- **2,100** teachers and facilitators trained in basic pedagogy and/or mental health and psychosocial support<sup>37</sup>



### Water, sanitation and hygiene

- **800,000** people accessing a sufficient quantity and quality of water for drinking and domestic needs<sup>38</sup>
- **800,000** people accessing appropriate sanitation services
- **1,000,000** people reached with critical WASH supplies<sup>39</sup>



### Social protection

- **140,671** households benefitting from new or additional social assistance (cash/in-kind) measures from government-funded programmes with UNICEF technical assistance support



### Cross-sectoral (HCT, SBC, RCCE and AAP)

- **8,000** households reached with UNICEF-funded humanitarian cash transfers (including for social protection and other sectors)<sup>40</sup>
- **3,000,000** affected people (children, caregivers, community members) reached with timely and life-saving information on how and where to access available services<sup>41</sup>
- **150,000** people sharing their concerns and asking questions through established feedback mechanisms

Programme targets are provisional and subject to change upon finalization of the inter-agency planning documents.

## FUNDING REQUIREMENTS IN 2024

UNICEF requires US\$239 million in 2024 to accelerate the humanitarian response, maintain and expand its programmes to meet the needs of 3 million vulnerable children, adolescents and women in Burkina Faso, including those living in isolated and hard-to-reach areas.

This represents an increase of funding needs of 5 per cent from the US\$226.7 million required in 2023. This is attributable to factors including, but not limited to: an increase in overall support costs, particularly transport, to enable UNICEF to strengthen its capacity to access the most vulnerable children, including in besieged locations.

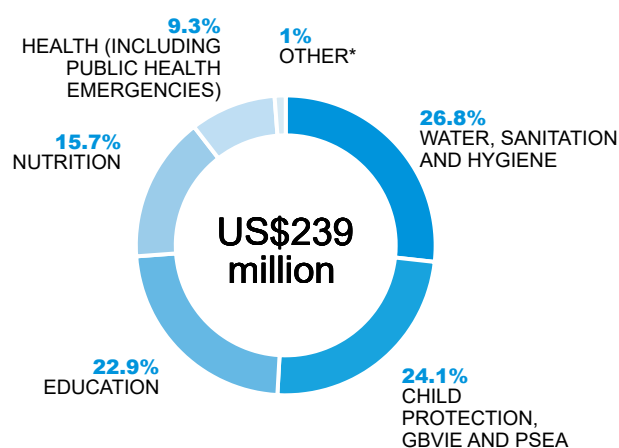
Given the particularly challenging situation of access to WASH services, the WASH sector alone accounts for 27 per cent of the appeal. The funding will allow UNICEF to provide access to a sufficient quantity and quality of water for drinking and domestic needs for 800,000 people.

The substantial increase in the Child Protection targets and budget, compared to 2023, is to ensure access to quality mental and psychosocial support to 800,000 children affected by the consequences of this protection crisis, compared with 600,000 children targeted in 2023.

Furthermore, due to additional nutrition and health needs, funding requirements increased by 13 per cent and 19 per cent, respectively, for programming in these sectors.

In education, the budget, compared to 2023, is reduced by 10 per cent. This is due to limited access for formal education activities at an increasing number of locations, UNICEF education strategy will invest more on lighter education activities, such as the radio education programmes, which are less costly<sup>42</sup>.

Overall, UNICEF estimates that without adequate and timely support in 2024, UNICEF and its partners will be unable to address the critical humanitarian needs of 2 million children in Burkina Faso.



Sector	2024 requirements (US\$) <sup>43</sup>
Health (including public health emergencies)	22,192,299
Nutrition	37,506,000
Child protection, GBVIE and PSEA	57,672,000 <sup>44</sup>
Education	54,837,766
Water, sanitation and hygiene	63,968,396
Social protection	161,378
Cross-sectoral (HCT, SBC, RCCE and AAP)	2,686,360 <sup>45</sup>
<b>Total</b>	<b>239,024,199</b>

\*This includes costs from other sectors/interventions : Cross-sectoral (HCT, SBC, RCCE and AAP) (1.1%), Social protection (<1%).

### Who to contact for further information:

**John Agbor**  
Representative UNICEF Burkina Faso  
T +226 05 051 683  
jagbor@unicef.org

**Lana Wreikat**  
Director a.i, Office of Emergency Programmes (EMOPS)  
T +1 212 326 7150  
lwreikat@unicef.org

**June Kunugi**  
Director, Public Partnership Division (PPD)  
T +1 212 326 7118  
jkunugi@unicef.org

# ENDNOTES

1. Secrétariat Permanent du Conseil national de secours d'urgence et de réhabilitation – Internally displaced persons scoreboard as at March 31, 2023. 60 per cent of this people are children.
2. Provisional figures - HRP 2024
3. Provisional figures - HRP 2024
4. The number of PiNs has increased compared to last year, as has the number of CiNs. Indeed, the 2024 HRP will cover the whole country, whereas in 2023 it only covered 5 regions (mostly those with IDPs). The child rate was therefore higher for the latest versions, since the child rate among IDPs and host communities is 60% and 52% respectively, while the national rate is 51.2%.
5. Calculated using highest coverage programme targets of children aged 6-59 months screened for wasting (1,080,000 excludes 10.2% for 6-23 months); children accessing formal or non-formal education, including early learning (743,136) 6-17 years; 49% of people reached with critical WASH supplies, representing children aged 5 years and adults (491,000); and unaccompanied and separated children to be reached with family-based care or a suitable alternative (6,000). 52 per cent women/girl. 2.2 people with disabilities to be reached.
6. While the situation in the country is deteriorating, the people to be reached number is lower than for 2023 because we have modified our calculation method for HAC 2024.
7. Calculated using highest coverage programme targets of children aged 6-59 months screened for wasting (1,080,000 excludes 10.2% for 6-23 months); children accessing formal or non-formal education, including early learning (743,136) 6-17 years; 3.1% of people reached with critical WASH supplies, representing children aged 5 years (31,000); and unaccompanied and separated children to be reached with family-based care or a suitable alternative (6,000). 27 per cent girls. 2.2% children with disabilities to be reached.
8. 5em Recensement générale de la population et de l'habitation, Institut National de la Statistique et de la Démographie (INSD), June 2022;
9. The inflation rate in September 2023 was 13 per cent, with an overall increase in the prices of food and transport products, as a consequence of the conflict in Ukraine. Populations became even more vulnerable, with their capacities to make a living from agriculture severely reduced because of the security situation in the country.
10. Secrétariat Permanent du Conseil national de secours d'urgence et de réhabilitation – Internally displaced persons scoreboard as at March 31, 2023.
11. Suspected cases: 13,135; deaths: 133 as of 01/10/2023 - Centre des opérations de réponse aux urgences sanitaires (CORUS) - Rapport de situation sur la flambée des cas de dengue au Burkina Faso, 03/10/23.
12. Confirmed cases: 92 - Epidemiological weekly bulletin, 01/10/2023 – week 39.
13. According to the Harmonized Framework analyses on food insecurity, over 3.3 million people in 15 provinces were in phase 3 to 5 of food insecurity and in need of food assistance from June to August 2023.
14. More than one in five children in Burkina Faso suffer from acute malnutrition. The latest nutrition SMART survey in July 2023 found only 3 of 18 surveyed municipalities had a moderate level of malnutrition; all others ranked either very high or high for malnutrition.
15. In the six regions most affected by the humanitarian crisis (Sahel, Centre-Nord, Nord, Boucle du Mouhoun, Est and Centre-Est), the rate of access to drinking water was 68 per cent and the rate of access to sanitation was 42 per cent in 2019, before the massive arrival of IDPs. The current crisis has severely impacted further on the access to water and sanitation.
16. From January to August 2023 members of the WASH Cluster reported 33 attacks in 15 different localities in the Est, Nord, Centre-Nord and Sahel regions, compared to 58 in 2022. In total, 974,353 people were deprived of their access to water between 2022 and 2023 due to these attacks only (estimate). 101 water infrastructures were sabotaged during these attacks.
17. <https://www.unicef.org/reports/climate-crisis-child-rights-crisis>
18. Rapport d'analyse Enfants au dehors de l'école, July 2017
19. This represents an increase of 44 per cent compared to the same period in 2022.
20. This represents an increase of 42 per cent compared to the same period in 2022.
21. Rapport statistique mensuel des données de l'Education en Situation d'Urgence, 31 May 2023
22. Figures are provisional, based on the estimated number of people in need established by Clusters, and are subject to be revised upon finalization of the humanitarian planning process.
23. The PIN includes severely wasted children, moderately wasted children, pregnant and lactating women.
24. This will enable rapid detection of unusual events that could lead to epidemics, and particular emphasis will be placed on responding to epidemics such as measles, polio, dengue fever, chikunguya, cholera.
25. Both preventive and curative.
26. With special attention to early childhood and adolescence.
27. Calculated as the 25 per cent of the draft cluster health CIN (children 6 months to 14 years old), taking into consideration that there are other partners and that the country plans to carry out a national measles campaign at the beginning of year 2024.
28. Corresponds to 70 per cent of the children below 5 calculated from the cluster health PIN. As for the pregnant women target, it corresponds to 25 per cent since UNFPA is covering a high percentage. The amount of 561,720 corresponds to the addition of the two.
29. The 1,200,000 children 6-59 months targeted for screening represented 65 per cent of children of the same age living in the 6 most affected regions (Sahel, Centre-Nord, Est, Centre-Est, Nord and Boucle du Mouhoun).
30. Total severely wasted children waiting for 2023 (IPC November 2022).
31. Corresponds to 60 per cent of pregnant and lactating women in the six most affected regions (Sahel, Centre-Nord, Est, Centre-Est, Nord and Boucle du Mouhoun).
32. The target is 40 per cent of the children in need estimation of Child Protection Area of Responsibility.
33. The increase in the target can be explained by the rise in needs and the increase in cases of GBV. From January to September 2023, 4,588 cases of GBV were recorded, compared with 2,912 during the same period in 2022.
34. The HRP targets for 2023 and 2024 are close despite an increase in the PIN due to the choice of InterCluster and OCHA to target areas where there are effective partners and ensured access. UNICEF is aligned with the HRP in terms of target and covers the same percentage as in 2023 (79 per cent of Education Cluster target coverage).
35. Representing 79 per cent of the children targeted by the Education Cluster in the 2024 HRP – same % as in 2023
36. Covers 90 per cent of the children targeted by HAC for access to education, considering that preprimary school children do not receive individual learning kits, and that some areas will not be able to be reached for supply delivery.
37. Represents 104,956 children (50 children per teacher), as of 14 per cent of the targeted children – same % as in 2023.
38. This value has increased by 6 per cent compared to 2023 and represents 43 per cent of the WASH Cluster 2024 overall targets.
39. This value represents more than half (54 per cent) of the WASH Cluster 2024 targets. It was estimated considering the fact that UNICEF is one of the main actors in awareness activities, which are completed with WASH supplies donations.
40. HCT: 6000; TA:2000
41. This indicator and the next one have been calculated on the basis of the level of achievement of the target in past interventions and the partnership potential in view for 2024.
42. In alignment with the Cluster and with the actual reported results, which demonstrate that non-formal activities, such as radio education and remedial courses, are more easily achievable and have more impact in emergency situations.
43. The cross-sectoral costs, including support costs, social and behaviour change, emergency coordination and cluster coordination have been integrated into the individual sector budget lines.
44. \$48 million for Mental health and psychosocial support including capacity building and community-based CP mechanism strengthening; \$2,million for Victims assistance using Case management approach for identified children in need including CAAG, GBV:SEA and other victims of violence and abuse (target included in the 120,000, but budget is apart); \$3 million for Case management UASC; \$7,200 for MRE; \$4,5 million for prevention of sexual exploitation and abuse interventions.
45. According to the Minimum Expenditure Basket (MEB) finalized by the Cash Working Group and the government in 2023, displaced and host family households need on average 41,000 XOF (US\$66.44) to cover the gaps defined per MEB and be able to meet their essential needs at local markets. The households receive monthly assistance for three months;