



MALAWI FLOOD Situation Report

SITUATION IN NUMBERS

Highlights

- According to the first UN Resident Coordinator’s Situation Report on the floods, the number of people displaced increased to an estimated 121,000 as of 16 January 2015.
- 1000 people have been rescued to date but 153 remain missing.
- Unconfirmed reports suggest that 350 schools are destroyed, damaged or occupied by displaced families, denying education for 300,000 children.
- UNICEF has signed agreements with partners to reach displaced households living in camps in Nsanje and Chikwawa with safe water through water trucking.
- UNICEF has received 75 drums of chlorine to be used for water treatment in camps and affected communities.
- Under the leadership of Department of Disaster Management Affairs Clusters are in the process of finalising their response plans based on which resources will be mobilised to support interventions in the affected areas.

16 January 2015

121,000

of people displaced

15

of districts affected

50

of people killed

153

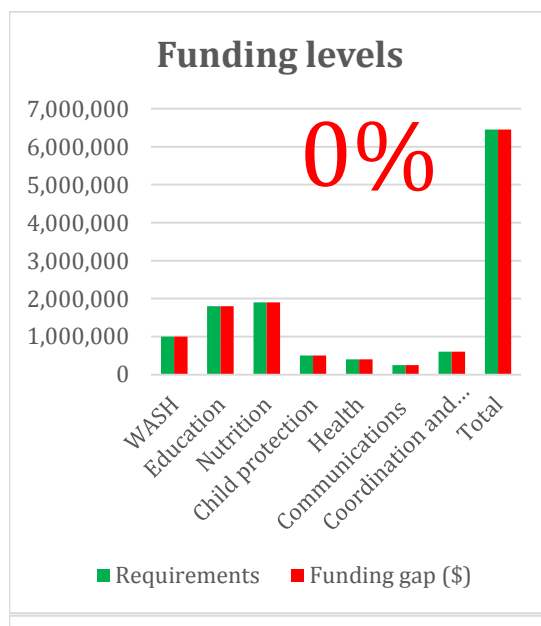
of people missing
(Office of the Resident Coordinator Situation report # 1, 15 January 2015)

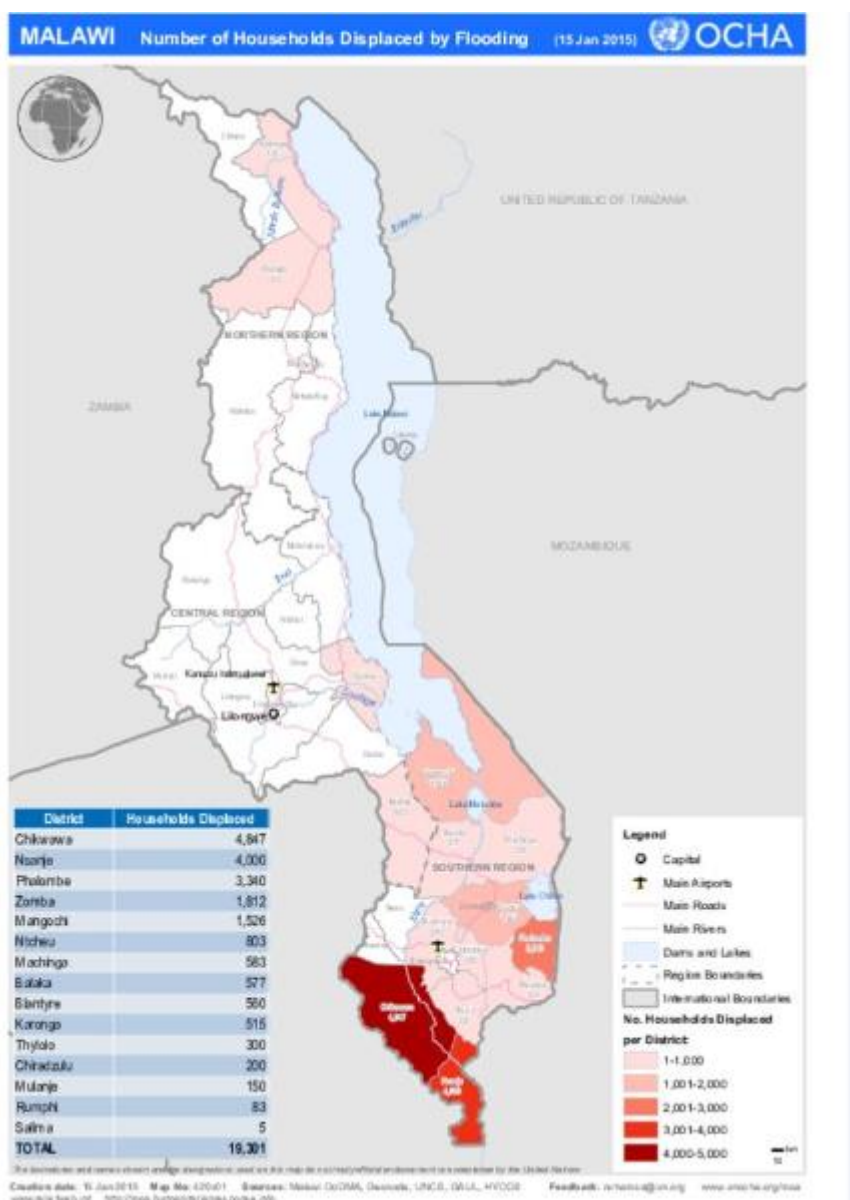
194

of Schools occupied by displaced people
(Reports from District Education Managers)

UNICEF’s Response with partners

Indicator	UNICEF		Sector/Cluster	
	UNICEF Target	Cumulative results (#)	Cluster Target	Cumulative results (#)
WASH	Affected people supported with access to safe water through household water treatment or rehabilitation and repair of water points		TBD	
Education	Affected school children benefiting from school supplies		TBD	
Nutrition	Children 6-59 months with SAM enrolled in OTP and NRU programmes		TBD	
Child Protection	Children provided with psychosocial support through community-based child care centres and children’s corners		TBD	





Heavy rains over the last few weeks have led to severe flooding across Malawi. By 16 January 2015, the number of people displaced by the floods was estimated to have reached 121,000 with 50 people reported killed and 153 missing. The floods have also caused extensive damage to crops, livestock and infrastructure including schools and health facilities. The southern districts of Nsanje, Phalombe, Chikwawa, Machinga and Zomba are so far the most affected. There are growing concerns of possible disease outbreaks given the poor sanitary and drainage conditions at relocation sites.

In response, the Government of Malawi declared a state of disaster in the 15 affected districts and has appealed to the international community for support, specifically in the provision of tents, food and non-food items (especially tarpaulins/plastic sheets, kitchen utensils and blankets), as well as support in conducting search and rescue operations.

UNICEF, is working closely with the government and other UN agencies to assess the situation and determine the response needs.

Humanitarian leadership and coordination

- The National cluster system has been fully activated. An inter-cluster meeting was held on 16 January 2015 where the team reviewed the status of cluster response plans and the initial response interventions being undertaken.
- UNICEF is co-leading the following clusters: Education, WASH, Nutrition and Protection.
- Three coordination centres have been established in Blantyre, Mzuzu and a National Level Coordination Centre in Lilongwe. This structure is not intended to bypass already existing local structures and the District Commissioners will be responsible for coordination at the district level. There will be a reporting form and an officer will be assigned to proactively contact districts and populate the reporting form on a daily basis.

- A public hotline has been activated, with calls being received at the Department of Disaster Management Affairs (DoDMA). A hotline script is being developed so secretarial staff can man the line.

Summary Analysis of Programme Response

Nutrition

- Teams are already in the field and working with the district nutritionists from the 15 districts to collect data/information on the admissions, death rates, default rates and cure rates of community based management of acute malnutrition in affected districts. Monitoring of stock levels - RUTF, CSB, therapeutic milks and ReSoMal- is also underway.
- The distribution of therapeutic milks and 2,000 blankets for NRUs is in progress
- UNICEF is working with WFP to share with partner's composition of ideal food basket so food donations are a complete basket rather than only maize.
- The nutrition cluster is making plans to recruit a cluster coordinator. The cluster met on Friday 16th January to finalise its response plan.

Health

- The emergency response plan is being developed to ensure provision of health services, with focus on the following:
 - Immunisation
 - Water borne/vector borne diseases
 - Antenatal/Postnatal care
 - Delivery/sepsis management
- An outbreak surveillance system is being established to report on disease outbreak
- Two NGOs (CHAI and PSI) have agreed to be involved in distribution of supplies to ensure speedy delivery to areas where they are needed
- The HIV/AIDS response will focus on ensuring prevention and care to displaced persons through the distribution of ARVs and CPT in camps, PEP Kits health commodities and menstrual hygiene kits

Communication for Development (C4D)

- As a cross-sectoral function, all C4D activities are embedded in programme response plans for Health, Nutrition, Protection, WASH and Education.
- Predesigned C4D IEC materials are available and have been sent for printing
- MOUs are already in place with community radio station nationwide and the radio stations will be requested to develop programme for affected communities to reinforce key messages.

Child Protection

- A response plan is being developed which covers the following areas
 - Identification of most vulnerable children for referral and individualized support provision (family tracing).
 - Provision of PSS targeting all children through CBCCs, Children Corners and in Camps.
 - Ensuring all protection services are functional (CBCCs, CVSUs, PVSUs).
 - Information management and documentation.
- For timely delivery of the interventions UNICEF is linking with 5 partners to submit proposals and has so far received from 3 NGOs (Plan Malawi, MIA, Blantyre Synod)

WASH

- Pre-positioned chlorine, plastic sheets, plastic buckets in high-risk districts are being utilised and 75 x 50kg chlorine supplies have been ordered
- PCAs addendums have been signed with Water Missions (water supply), Goal Malawi (Sanitation and hygiene) and with Red Cross Malawi (sanitation and hygiene)
- UNICEF is leading the co-ordination of preliminary assessments with all NGO partners
- UNICEF has received 75 drums of chlorine to be sent to the affected areas, and is reprogramming funds to support water trucking in 8 camps in Nsanje and Chikwawa districts. .

Education

- A response plan is being developed which will cover the following areas:
 - Provision of temporary shelter for damaged schools, and schools under water or occupied
 - Provision of school in a box kits
 - Training teachers to manage teaching and learning in emergency
 - Providing meals for all affected schools
 - Additional psychosocial support and protection through sports in a box – for both ECD and primary schools

- Additional information for the cluster will be collected through District Education managers and School Health and Nutrition officers at the district. Six teams will visit at least 15 districts from 16-18 January to consolidate information from the district teams in order to provide a more holistic picture.

Supply and Logistics

- UNICEF has ordered various supplies from Copenhagen including essential health and nutrition supplies, mosquito nets and education in emergencies equipment. The supplies will arrive by air in order to ensure that they arrive for timely response. The plane is expected to arrive by Friday 23rd January.

Media and External Communication

- First photos have been sent to Geneva and HQ offices
- Further communication resources are being gathered and plans are being developed for increased media coverage

Funding

Funding Requirements for 3 months (January – March 2015)				
Appeal Sector	Requirements	Funds received*	Funding gap	
			\$	%
WASH	1,000,000	0	1,000,000	100
Education	1,800,000	0	1,800,000	100
Nutrition	1,900,000	0	1,900,000	100
Child protection	500,000	0	500,000	100
Health	400,000	0	400,000	100
Communicatio	252,000	0	252,000	100
Coordination and Logistics	600,000	0	600,000	100
Total	6,452,000**	0	6,452,000	100

* 'Funds received' does not include pledges

** The funding requirements may increase. Clusters are still finalising their response plans

Next SitRep: 19 January 2015

Who to contact for further information:

Mahimbo Mdoe
Representative
Country Office
Malawi
Telephone: 265 999 964 130
Facsimile: 265 1 773 162
Email: mmdoe@unicef.org

Roisin De Burca
Deputy Representative
Country Office
Malawi
Telephone: 265 992 961 100
Facsimile: 265 1 773 162
E-mail: rdeburca@unicef.org

Angela Travis
Communication Chief
Country Office
Malawi
Tel: +265 999 964 208
Fax: +: 265 1 773 162
Email: atravis@unicef.org