



SITUATION IN NUMBERS

## Highlights

- An estimated 84,100 refugees, IDPs, returnees and third-country nationals are currently displaced in the Lake region following continued deterioration of the security situation in this part the country.
- Preliminary results of the SMART nutritional survey in Chad from October and November 2015, show a national global acute malnutrition (GAM) rate of 13.3% above the warning threshold of 10%. A GAM prevalence analysis in different regions indicate that the situation has worsened in all regions in comparison of last year same period, but is of particular concern in Guera, Wadi Fira, Ouaddai, Barh El Gazal, Kanem and Lac. In addition, 12 regions out of 20 surpass emergency threshold for severe acute malnutrition (SAM).

30 November 2015

**2,200,000**

Children affected

**154,400**

Children under 5 with Severe Acute Malnutrition

**90,000**

Returnees from Central African Republic

**84,100**

Persons displaced by the Nigeria Crisis in the Lake Region

**53,600**

Internally displaced persons in Chad

## UNICEF Response with partners

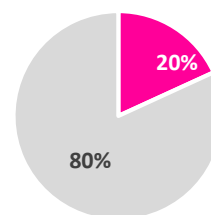
Humanitarian Performance Monitoring Indicator	UNICEF		Sector/Cluster	
	UNICEF Target	Cumulative results (#)	Cluster Target	Cumulative results (#)
Children under 5 with SAM admitted for therapeutic care	154,400	127,967	154,400	127,967
People in humanitarian situations that have access to water and sanitation facilities	100,000	99,342	100,000	99,342
Unaccompanied and separated children that have access to family tracing and reunification services	2,000	1,046	2,000	1,046
Primary school children in humanitarian situations with access to education	100,000	67,487	174,354	185,887

2015 Humanitarian funding needs

**US\$ 62.2 million**

Funding received in 2015

**US\$ 12.7 million**



Received Gap

## Situation Overview and Humanitarian Needs

<b>Estimated Affected Population</b>			
<i>(Estimates based on initial figures from the General Population Census RGPH- INSEED 2009; the Humanitarian Needs Overview; SMART Survey August 2014 and SAM Admissions in 2015; OCHA, IOM and UNHCR figures )</i>			
<b>Categories</b>	<b>Total</b>	<b>Male</b>	<b>Female</b>
Total Affected Population	5,500,000	2,788,700	2,711,500
Children Affected (Under 18)	2,200,000	1,115,400	1,084,600
Children Under Five	1,001,000	507,507	493,493
Children 6 to 23 months	299,750	151,973	147,777
Pregnant women with Moderate Acute Malnutrition (MAM)	80,960	-	80,960
Children Under Five with Severe Acute Malnutrition (SAM)	154,400	69,480	84,910
Children Under Five with SAM and medical complications	15,440	7,610	7,830
Children Under Five with Moderate Acute Malnutrition (MAM)	257,000	130,273	126,727
CAR returnees	90,240	44,218	46,022
Displaced by Nigerian crisis (refugees, IDPs, Chadian returnees and TCN)	84,100		
Refugees	378,604	166,326	212,278

### *Impact of violence linked to Boko Haram*

As insecurity continues to deteriorate with more frequent attacks, population displacement continues in the Lake Chad region. The humanitarian community estimates that approximately 84,121 people, including refugees, internally displaced persons (IDPs), returnees and third-country nationals, are currently displaced in the Lake region. Of these, 53,639 are IDPs from the latest wave of massive displacement which began in July 2015.

The security situation in the prefectures of Bol Bagassola, Daboua and Kangalam in the Lake region remains precarious. A State of Emergency in the Lake Region was officially declared by the government early November and has been extended by a decision of the Chad National Assembly for a period of 4 months. Suicide attacks perpetrated by members of Boko Haram continue. Access to the sites hosting IDPs is still very difficult for security reasons. Regular activities have been suspended and assessment missions have been frequently postponed.

The humanitarian situation is stable in the Bagassola area, but remains a concern in the western part of the Lake Region where the government announced a new military operation, after the suicide attacks of November 8th in Ngouboua killing five people and injuring 13 others, against Boko Haram elements and asked people to leave their villages. Following this announcement, people began to move, resulting in new arrivals in Tchoukoutalia, Fourkoulom and Koukoume, requiring assistance.

### *Malnutrition and Food Insecurity in the Sahel*

The preliminary results of the SMART nutritional survey in Chad show a national global acute malnutrition (GAM) rate of 13.3%. A GAM prevalence analysis in different regions indicate that the situation has worsened in all regions in comparison of last year same period, but is of particular concern in Guera (where GAM has increased from 9.9% in 2014 to 21.2% in 2015), Wadi Fira (where GAM has increased from 12.4% in 2014 to 18% in 2015), Ouaddai (GAM has increase from 9.4 % in 2014 to 17.9% in 2015), Barh El Gazal (from 12.3 % in 2014 to 17.9 % in 2015), Kanem (GAM has increase from 11.7% in 2014 to 14.2% in 2015) and Lac (from 11.6% in 2014 to 13.6 in 2016). According those preliminary results, 7 regions out of 20 surpass emergency threshold for GAM and 12 regions out of 20 surpass emergency threshold for SAM.

### *Refugees, returnees from CAR and stateless persons in the South*

There are still 90,240 Chadian returnees from Central African Republic that are still in need of humanitarian assistance; 71,759 CAR returnees are still living in five sites in Moyen Chari, Logone Orientale and Logone Occidental Regions in Southern Chad and 12,984 other are living in host communities in Mandoul (5,853) and Salamat (7,131) regions. The site of Zafaye, close to N'Djamena host 5,259 CAR returnees. Improved shelter, hygiene and sanitation facilities remain the main needs in sites.

## Interagency collaboration and partnerships

### Inter-Agency

- The new Humanitarian Coordinator presented his credentials as the Resident Coordinator of the UN System, Humanitarian Coordinator and UNDP Resident Representative to the Foreign Minister of Chad, November 16, 2015.
- The HRP 2016 was finalized with a budget of 566 million for 108 projects.

### Clusters

- UNICEF continues to lead the WASH, Education and Nutrition clusters, as well as the Child Protection sub-cluster, in N'Djamena. There are also WASH sub-clusters active in other regions of Chad, in Goré, Sarh and Abeché and sub cluster Education in Moundou. Sub clusters are also functional in Bagasola or Bol for the Lake region.

## UNICEF Programme Response

Sector	Indicator	2015					
		UNICEF & operational partners			Sector / Cluster		
		UNICEF Target	Cumulative results (#)	% of Target Achieved	Cluster Target (#)	Cumulative results (#)	% of Target Achieved
Nutrition	Number and % of children 6-59 months with Severe Acute Malnutrition (SAM) admitted for therapeutic care and benefitting from promotion of nutrition practices	154,400	127,967	83%	154,400	127,967	83%
	Number of Health Centers with an integrated nutrition program	545	496	91%	545	496	91%
	Number of children in humanitarian situations aged 6 to 59 months receive vitamin-A supplementation and deworming	3,600,000	3,379,395	94%	3,600,000	3,379,395	94%
<sup>1</sup> Cumulative SAM admissions data from January to October 2015							
Health	Number of children under 5 vaccinated against measles	2,000,000	539,069 <sup>2</sup>	27%	2,000,000	539,069	27%
	Number of children under 5 affected by malaria are treated	150,000	132,359	87%	150,000	268,684	179%
<sup>2</sup> Targets and result refer to national campaigns.							
WASH	Number of children and families affected by malnutrition that received a lifesaving package of WASH and nutrition supplies	152,000	7,998	14%	50,000	22,998	46 %
	Number of people in humanitarian situations that were reached with messages on appropriate hygiene practices	450,000	341, 498	77%	692,500	394,687	57%

	Number of conflict-affected people that have access to potable water and basic sanitation facilities	100,000	99,342	99%	100,000	99,342	99%
--	--	---------	--------	-----	---------	--------	-----

Child Protection	Number of unaccompanied and separated children that have access to family tracing and reunification services	2,000	1,046	52%	2,000	1,046	52%
	Number of displaced children have access to psychosocial support in child-friendly places	15,000	3,509 <sup>7</sup>	23%	15,000	3,509 <sup>7</sup>	23%
	Number of school-aged children in conflict areas accessing mine risk education	50,000	7,361	15%	50,000	7,361	15%

<sup>7</sup>Data collected in Dar es Salam refugee camp (Lake region) and Maingama (CAR returnees site)

HIV/AIDS	Number of pregnant women that have access to HIV and AIDS screening services and prevention of mother-to-child transmission services	56,500	18,425 <sup>9</sup>	33 %			
	Number and % of pregnant women who test HIV-positive receive ART to reduce mother-to-child transmission	80%	95.4%	NA			

<sup>9</sup> Available data are those from southern Chad returnee sites and Eastern Chad regions (Ouaddai, Wadi Fira, Sila and Ennedi).

Education	Number of primary school-aged children in humanitarian situations have access to education	100,000	67,487	67%	174,354	185, 887	108%
-----------	--	---------	--------	-----	---------	----------	------

UNICEF Operational Partners: MOH, ACF, MSF-CH, Merlin, ALIMIA, IRC, SECADEV, MSF-CH, DRAS, FRC, IMC, MSF-H, BASE, IAS, ADRA, Association Moustagbal, Nagdaro, ACORD, IRW, CRF, CRT, CELIAF, CSSI, IHPD, UFEP, APSELPA, ADERBA, ADESOL, Al-Nadja.

Data in this table also includes the data in the table *UNICEF and partners' response in the Lake Region* below

## UNICEF and partners' response in the Lake Region

Sector	Indicator	2015					
		UNICEF & operational partners			Sector / Cluster		
		UNICEF Target	Cumulative results	% of Target Achieved	Cluster Target	Cumulative results	% of Target Achieved
Nutrition	Number of SAM cases admitted in IPT and OPT in Lake Region	9,215	12,733	138%*	9,215	12,733	138%
	% of children with SAM discharged recovered	>75%	90.7% <sup>1</sup>	100%	>75%	90.7%	100%

\* The initial targets were for 6-months, based on the initial displacement situation and trends of April 2016. The situation has continued to deteriorate since then and UNICEF with support from ECHO has been able to continue supporting emergency nutrition needs beyond the initial target.

<sup>1</sup> Rate from out-patient facilities. In-patient facilities have an average recovery rate of 86% in Lake region so far this year

Health	Number of children aged 6-59 months that receive vitamin A supplementation and deworming	21,344	17,042 <sup>2</sup>	80%	21,344	17,042	80%
--------	--	--------	---------------------	-----	--------	--------	-----

	Number of children 9 months - 15 years vaccinated against measles	82,677	17,434	21%	137,935	17,434	13%
	Number of affected population receiving LLITNs	120,240	12,440	10% <sup>3</sup>	200,400	12,440 <sup>4</sup>	6%

<sup>2</sup> Vitamin A supplementation and deworming campaign results from Ngouboua, Tchoukoutalia, Hakouitcoulouma, Bagasola and Dar es Salam site

<sup>3</sup> The target is overestimated because government conducted a national campaign in 2014 and requested that further distributions focus only on populations that have suffered displacement. There are currently about 82,000 displaced people in the Lake, including over 7,000 refugees supported by UNHCR. The bednets distributed by UNICEF in the Lake have been provided by the MoH national malaria program from its emergency stock in response to UNICEF advocacy.

<b>WASH</b>	Number of SAM-affected carer/mothers and children who receive hygiene kits with key hygiene messages	9,215	3,000	32%	9,215	3,000	32%
	Number of affected population [in camps and in host communities] with access to sufficient safe drinking (at least 20l/pers/day, 0 coliforms)	43,000	33,184	77%	107,800	33,184	31%
	Number of affected population [camps and host communities] have access to adequate sanitation facilities	26,900	28,838	105%	43,700	41,489	95%
	Number of affected people reached with messages on best practices of hygiene and household water treatment	34,440	34,905	101%	86,240	34,905	41%
<b>Child Protection</b>	Number of UASC identified and benefiting from family tracing services	300	396	100%	300	396	100%
	Number of children participating in recreational activities (in CFSs)	2,000	1,162	58%	2,000	1,162 <sup>4</sup>	58%
	Number of people accessing MRE	107,000	73 <sup>6</sup>	0%	107,000	73	0%
<b>Education</b>	Number of affected school-age children that have access to quality education	14,200	8,160	58%	16,200	8,160	50%

<sup>4</sup> Correction of data reported in previous SitRep

This result is overvalued because it integrates separated children number who do not currently benefited from family tracking but are monitored.

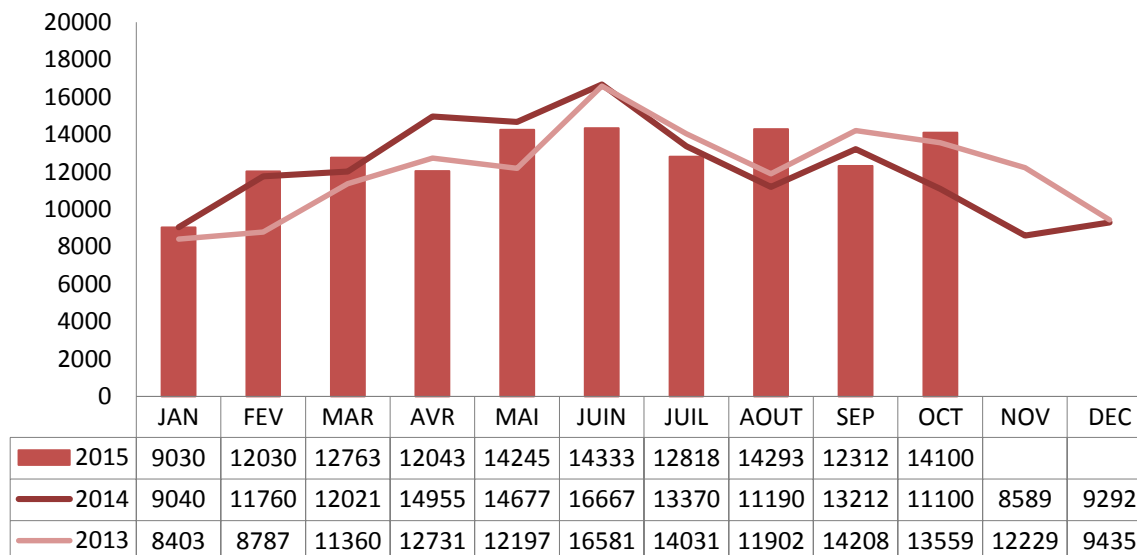
<sup>6</sup> Although awareness building sessions and teacher training have taken place, MRE in schools in the area will begin with the new the academic year in October and data is yet to be collected.

## Narrative analysis of results



### NUTRITION

As of end of October<sup>1</sup>, 127,967 children with SAM were admitted with an average recovery rate of 94% in outpatient nutrition unit and 89% in the inpatient nutrition units.



### Lake Region Response

In the Lake Region, nutritional units supported by UNICEF have supported 1,593 cases of SAM in October 2015 and there is no noticeable change from previous months in areas with IDP sites. To ensure proper nutritional care, 4,250 cartons of ready to use therapeutic food (RUTF) were distributed for outpatient nutrition units / inpatient nutrition units in 4 regions (Lac, Kanem, Bahr El Ghazal, Hadjer Lamis) in the western Sahel. 6,000 cartons of RUTF have been prepositioned to cover the needs for December.

A joint assessment mission (health and nutrition response) was conducted in the health districts of Bol and Baga Sola in November 2015 under the leadership of UNICEF, with WHO, IMC, UNFPA and the MoH. In these districts, 5 IDP sites (Yirga, Kinjiria, Tagalog, Bibi and Toumoun) need additional humanitarian support to better meet the needs of IDPs and the host population. The assessment in the health district Liwa is still ongoing. The final report of this evaluation will be available once data collection is complete.

As part of the support for reintegration of returnees and support to host communities in Southern Chad, 6 nutritional outpatient units have been opened since September 15, 2015 in the Health District of Moissala (Mandoul Region).



### HEALTH and HIV/AIDS

The vaccination campaign against poliomyelitis paired with the vitamin A supplementation and deworming took place from November 25 to 27, 2015 and covered the whole Lac region including IDP sites. This campaign was supported by UNICEF and results will be available in December; 1 obstetrical kit and 1 nutritional care kit and medications for inpatient nutrition unit were given to the Bagassola health district hospital. Basic medications such as painkillers and antibiotics were given to Tagal, Bibi, Koukime and Tchoukoudoum health centers, all of which are facing higher caseloads due to incoming IDPs. To support the fight against HIV, two tents, tables and chairs were allocated for voluntary testing and counseling (VCT) and PMTCT in Dar es Salaam

<sup>1</sup> Health and Nutrition data are generally reported with a one month lag period, allowing to gather and report the data.

refugee camp and the IDP site of Dar Naim. In week 41, VCT camp Dar Es Salam reported 3 cases of HIV among 5 people screened, while 1 positive case among 21 women was identified through prevention of maternal to child transmission (PMTCT) services. .

### **In Southern Chad:**

9,923 under-five aged children suffering from malaria were diagnosed and treated in CAR returnee sites in Southern Chad. Attendance at health centers for maternal health is particularly satisfactory Djako (Logone Occidental) and Kobiteye sites (Logone Oriental) with an antenatal consultation rate of 95%, and 100% of deliveries attended by a nurse.

At the end of November a total of 1,494 adults on ARV treatment and 112 children on ARVs are receiving care in CAR returnee sites. PCMT activities reached 625 pregnant women who were counseled and screened for HIV during ANC. 13 women were found to be HIV positive. 299 people have been screened in centers through voluntary testing, and 25 were found to be HIV positive. In addition, 3,047 young people have been sensitized on HIV/AIDS.



### **WASH**

- 231 emergency latrines out of a planned 305 have been completed and are functional in different sites around Bagassola and Bol;
- 20 boreholes were drilled in IDP sites and host villages close to Dar Es Salam camp;
- 1,215 new latrines have been made in the host communities in 40 villages around Bol and Bagassola through Community Led Total Sanitation;

#### **In the Salamat region:**

- 407 households arrived in the second wave of returnees from CAR in 2015 have been assisted for WASH and NFI (household kits, soap and mats);

#### **In the Southern Chad:**

- UNICEF is preparing a supply of four hand pumps in response to a crucial situation in Kobitey and Danamadja - sites in Gore. There is a warning of the possible suspension of 3 drinking water supply units due to lack of fuel caused by a funding shortage in addition to the failure of 8 hand pumps.
- 40 boreholes were constructed by UNICEF partner, 31 of which are functional, in the sub-prefectures of Ade (15 boreholes), Moudeina (14 boreholes) and 11 boreholes in Tissi.



### **EDUCATION**

- 700 pre-primary school children have received UNICEF tables and chairs in five schools and one Child Friendly Space in Dar Es Salam and Bagassola in the Lake Region. UNICEF has rehabilitated 5 Temporary Spaces in schools (TLS) in Dar Es Salam refugee camp allowing 350 children to return to school.
- In spite of difficulties of access due to insecurity 4,120 children received learning supplies in 17 schools inspections in Bagassola, Kangelam and Bol School inspection in collaboration with the Regional Directory of Education for the Lake.
- Five recreation kits were given to five schools in Bagassola and two of them have benefited from teaching materials. Student in Dar Es Salaam had not received learning tools since September - 180 students returned to school after learning of the distribution supplies.
- In the Southern Chad, 7,546 school age boys and girls have access to educational activities in the Southern Chad returnees' sites (Maingama, Sido, Danamadja, Kobiteye, Djako) and in host community schools around the sites. 60 temporary and semi temporary learning spaces and hygiene infrastructure were constructed with UNICEF support.



### **CHILD PROTECTION**

- 12 IHDL / DRASL partners and UNICEF's child protection program staffs have received training on the identification, documentation, tracing and reunification, organized with the support of the Regional Office Child Protection in Emergencies specialist.

- 18 teenage girls were trained to knit in the Dar es Salaam camps Child Friendly Space benefited from dresses knitted by peers
- 16 unaccompanied children (UAC) out of 78 were monitored UNICEF partners in the Lake Region.
- 30 army officers Salamat Region were trained in Amtiman on rights and child protection (protection before, during and after the armed conflict)
- Documents for family reunification were finalized in Djako site and will allow two UAC family reunification with their parents living in Mbile Yokadouma CAR refugee's camp in Cameroon a positive family reunification response was received for two separated children (SC) in the same site. Nine boys (UAC) from Danamadja and Djako sites have received psychosocial support; UAC and SC physical verification for updating data is underway in the site Maingama.

## COMMUNICATIONS

### External Communication

- In coordination with UNICEF WCARO, Chad CO facilitated a mission with UNICEF's Regional Director to assess the humanitarian situation in the Lake Region. A large series of tweets from the Regional Director's twitter account were shared and echoed in UNICEF's global, regional and CO social media platforms. The tweets served as an advocacy tool to portray the overall humanitarian situation, highlighting the support of financial partners such as ECHO and CERF.
- UNICEF Chad facilitated the visit of the Korean National Committee to Abeche, Ouddaï region. Accompanied by a National Goodwill Ambassador and a multimedia crew, the team documented Maternal and Child Survival and Development programmes, including vaccination, malnutrition and WASH interventions. The materials and videos produced will be broadcasted during a fundraising telethon event on 28 December on Korean National TV.
- A photography workshop with 20 children and young people was carried in Mao, western Chad. The young participants learned how to use photography as an advocacy tool and captured the malnutrition situation in Kanem region and UNICEF work with support from ECHO. A [photo essay](#) was produced and shared in different digital platforms.
- Following the launch in October of UNICEF-supported Digital Mapping project in Moundou, Southern Chad, which had a strong focus on climate change issues, a young participant was chosen to participate in COY and COP21 conference in Paris. The "young climate ambassador" represented Chad and UNICEF as a young leader for climate efforts. Several Multimedia materials and digital platforms were produced, including an interactive [website](#), a [Chad's page](#), and a [video](#).

## FUNDING UPDATE

No additional funding was received for emergency activities in the month of November. With only 11.3 million USD received against the 62.2 million USD requested in the 2015, UNICEF's response capacity remains under pressure. Contingency stocks have been depleted and need to be urgently replenished, while an adequate scale up of the response to the crisis in the Lake region and the deterioration in the Sahel remain an urgent priority. UNICEF has contributed to the 2016 Humanitarian Response Planning exercise with an ask of USD 62,4 for projects in Health and HIV, Nutrition, WASH, Child Protection, Education and NFI and shelter, spanning the four main crises identified by the Clusters in Chad<sup>2</sup>.

Sector	Total revised 2015 Requirements (HAC)	Funding Received (2015)	Funding Gap (2015)	
			USD	%
Nutrition	32,750,000	8,541,302	24,208,698	74%
Health	14,000,000	640,322	13,359,678	95%
WASH	9,350,000	1,990,133	8,348,878	79%
Child Protection	1,500,000	261,920	1,238,080	83%
Education	3,000,000	761,236	2,634,021	75%
HIV	1,000,000	0	1,000,000	100%
Cross-sectoral	627,000	516,500	110,500	18%
<b>Total</b>	<b>62,227,000</b>	<b>12,711,413</b>	<b>49,515,587</b>	<b>80%</b>

<sup>2</sup> Food insecurity and Malnutrition, Population movement, Health Emergencies and Natural Disasters.



For further information, please contact

**Philippe Barragne-Bigot**

Representative

UNICEF Chad

(+235) 22 51 75 10

[pbarragnebigot@unicef.org](mailto:pbarragnebigot@unicef.org)

**Marcel Ouattara**

Deputy Representative

UNICEF Chad

(+235) 66 79 00 96

[mouattara@unicef.org](mailto:mouattara@unicef.org)

**Lilian Kastner**

Chief Emergency

UNICEF Chad

(+235) 66 39 10 14

[lkastner@unicef.org](mailto:lkastner@unicef.org)