

## UNICEF Chad Monthly Humanitarian Situation Report

Date: March, 25<sup>th</sup> 2013

### Highlights

Global acute malnutrition in the Chadian Sahel is chronically hovering around emergency thresholds. Severe Acute Malnutrition rates remains above emergency levels in the Sahel belt regions. The results of the last nutrition survey with SMART methods conducted by UNICEF and the Ministry of Health on January 2013 (Post Harvest season) shows that the Global Acute Malnutrition Rate (GAM) in 6 regions of the Sahel belt is at or above the emergency threshold of 15%, while in the other regions, the GAM rate is critical (10% – 15%); in fact the 2012 harvest does not translate into a better nutrition outcome for children.

Around 12,500 Sudanese refugees fleeing inter-ethnic violence in the troubled Darfur region have crossed into East of Chad over the last four weeks. In addition, around 4,000 new Central African Refugees also crossed into South of Chad near Belom, an old CAR refugee's camp.



Sudanese new refugee's children in Tissi, Chad. Pic @ Moustapha Grovogui

### Situation Overview & Humanitarian Needs

The nutrition crisis, regional instability, continued armed conflicts in neighboring Sudan and CAR, and limited means to withstand environmental shocks (flooding and drought) and cyclic epidemics (Measles, Polio, Meningitis, Cholera) led to a remaining precarious and volatile humanitarian situation in Chad.

In 2012, the country experienced floods, caused by heavy rainfall and the overflow of rivers, that affected more than 700,000 people across the country, displacing thousands of people, damaging residential areas and crops and will most likely have a lasting impact on their short and medium term livelihoods in 2013.

While the 2012 harvest is considered to be better in comparison to 2011, the agricultural production is not sufficient to ensure food security for all households, particularly the most vulnerable. The country is still recovering from the effects of two droughts in three years, prior to this years' harvest.

Severe Acute Malnutrition rates remains above emergency thresholds in the Sahel belt regions. The results of the last nutrition survey with SMART methods conducted by UNICEF on January 2013 (Post Harvest) shows that the Global Acute Malnutrition Rate (GAM) in 6 regions of the Sahel belt is at or above the emergency threshold of 15%, while in the other regions, the GAM rate is critical (10% – 15%); in fact the 2012 harvest did not translate into a better nutrition outcome for children; UNICEF estimates that almost 130,000 children will suffer of severe acute malnutrition in 2013 and over 320,000 of moderate acute malnutrition.

The security situation in neighboring Sudan and the Central African Republic (CAR) remains volatile, as continued armed conflict encourages population movements across the region. As of March 2013, UNHCR has reported the arrival of approximately 12,000 new Sudanese refugees in Tissi, eastern Chad, and 3,000 new refugees from CAR in the South. UNHCR is working to register and receive these new refugees in already-existing camps, despite ongoing budget reductions and lack of funds.

Migration flows and population displacement remain important matters of concern. Following the Libya crisis, more than 120,000 Chadian migrant workers returned to areas of origin or settled in transit zones, mostly in Faya Largeau and around Bourkou, Ennedi, Tibesti and the Sahel belt, areas already at high risk of food insecurity. There are still 288,290 Sudanese refugees in eastern Chad and 58,179 Central African refugees in the south of the country in addition to 421 urban refugees. It is estimated that 50,000 former IDPs have returned to their areas of origin but 131,000 remain displaced.

A consequence of the cycle of recurrent crisis, which is exacerbated by the arrival of returnees, refugees from neighboring countries fleeing violence, is that the livelihoods of communities in disaster-affected areas are further stretched. This situation is worsened by the deterioration of their purchasing power and the degradation of the environment caused by climate change, deforestation, erosion, desertification, over-exploitation of groundwater and pressure on scarce natural resources.

The presence of unexploded ordinance (UXO) in the north and east of the country as well as the proliferation of small arms amongst the civilian population due to political instability in the other countries of the Sahel, are further threats that can hinder the effective delivery of humanitarian aid.

<ul style="list-style-type: none"> <li><b>Estimated Affected Population</b></li> <li><i>(Estimates calculated based on initial figures from the General Population Census RGPH-INSEED 2009, SMART Survey June 2012,)</i></li> </ul>			
Categories	Total	Male	Female
Total Affected Population	6,252,536	3,170,036	3,082,500
Children Affected (Under 18)	3,588,956	1,819,601	1,769,355
Children Under Five	1,137,962	576,947	561,015
Children 6 to 23 months	340,763	172,767	167,996
Pregnant women with MAM	100,000	-	100,000
Children Under Five with Severe Acute Malnutrition (SAM)	126,000	64,000	62,000
Children Under Five with SAM and medical complications	12,730	6,454	6,276
Children Under Five with Moderate Acute Malnutrition (MAM)	430,000	210,000	220,000

IDP's and Returnees	181,000	85,000	96,000
Refugees	366,500	178,014	188.486

## FUNDING UPDATE

Appeal sector	Requirements as per HAC January 2013	Funds Received to date	Unmet requirements	
			Amount	%
Nutrition	28,943,500	3,945,378	24,998,122	86.37
Health	14,445,000	449,316	13,995,684	96.89
WASH	7,651,591	1,175,157	6,476,434	84.64
Education	5,350,000	40,750	5,309,250	99.24
Child Protection	2,675,000	346,273	2,328,727	87.06
HIV/AIDS	1,230,500	8,103	1,222,397	99.34
Cluster/ Secteur Coordination	600,000	304,898	295,102	4918%
<b>Total</b>	<b>60,895,591</b>	<b>6,269,875</b>	<b>54,625,716</b>	<b>89.7</b>

\*The total includes a maximum recovery rate of 7%. The actual recovery rate on contributions will be calculated in accordance with UNICEF Executive Board Decision 2006/7 dated 9 June 2006.

## Inter-Agency Collaboration and Partnerships

- UNICEF and UNHCR are in partnership to address the new of new refugees from Darfur and CAR
- UNICEF as lead agency for WASH, Nutrition, Education, and Child Protection sub cluster continues to play an active role in coordinating humanitarian response in Chad

## Program response

	Sector	Estimated # / % coverage	UNICEF & operational partners			Sector / Cluster		
			UNICEF Target	Cumulative results (#)	% of Target Achieved	Cluster Target	Cumulative results (#)	% of Target Achieved
SAHEL NUTRITION CRISIS	Nutrition	Children <5 with Severe Acute Malnutrition admitted to therapeutic care	126,000	15,648	12.3%	147,000	15,471	12.4%
		Number of Health Centers with integrated nutrition program	476	455	95.6%	576	455	79.0%
	UNICEF Operational Partners: MOH, FRC, Alima, IMC, Base, ARNUT, Centre NDA, MSF-CH, MSF-H, MSF-F, IRC, ACF, Merlin, CRT, CHORA, Concern, SOS, PU-AMI							
	WASH	Number of Health Centers delivering the WASH in NUT packages	476	108	24%	450	108	24%
		# of SAM affected carer/mothers and children who receive hygiene kits with key hygiene messages	15,648	2,994	19.1%	15,471	2,994	19.4%
	UNICEF Operational Partners: CHORA, Merlin, ASSAR, AFDI							

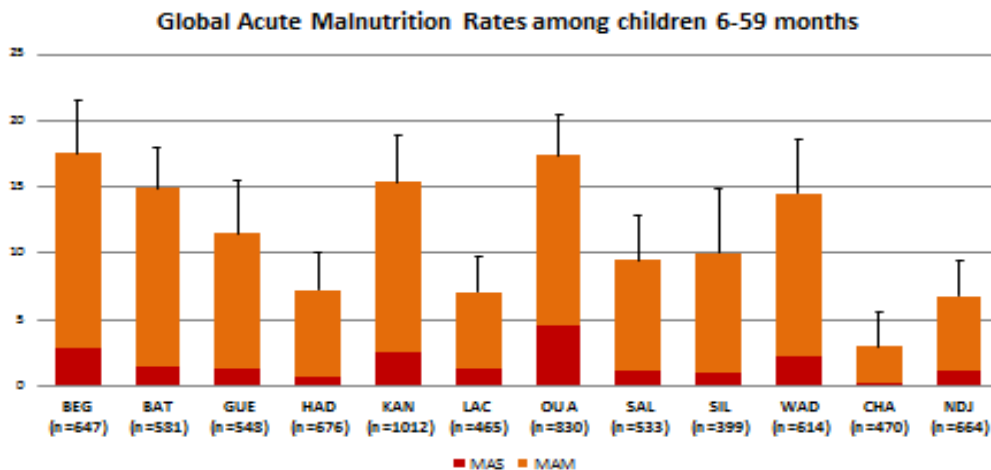
NUTRITION	Sector	Estimated # / % coverage	UNICEF & operational partners			Sector / Cluster		
			UNICEF Target	Cumulative results (#)	% of Target Achieved	Cluster Target	Cumulative results (#)	% of Target Achieved
			Health	Children <1 receiving measles vaccination in refugee camps in Eastern Chad	84,487	3,323	3,9%	84,487
UNICEF Operational Partners: IMC, BASE, CSSI,								
Protection	"# of children with SAM who received psychosocial care	50,000	2,166	4.3%	126,000	2,166	1.7%	
UNICEF Operational Partners: IMC, BASE, CSSI, CRT, MERLIN								

### UNICEF and partners' programming

#### NUTRITION

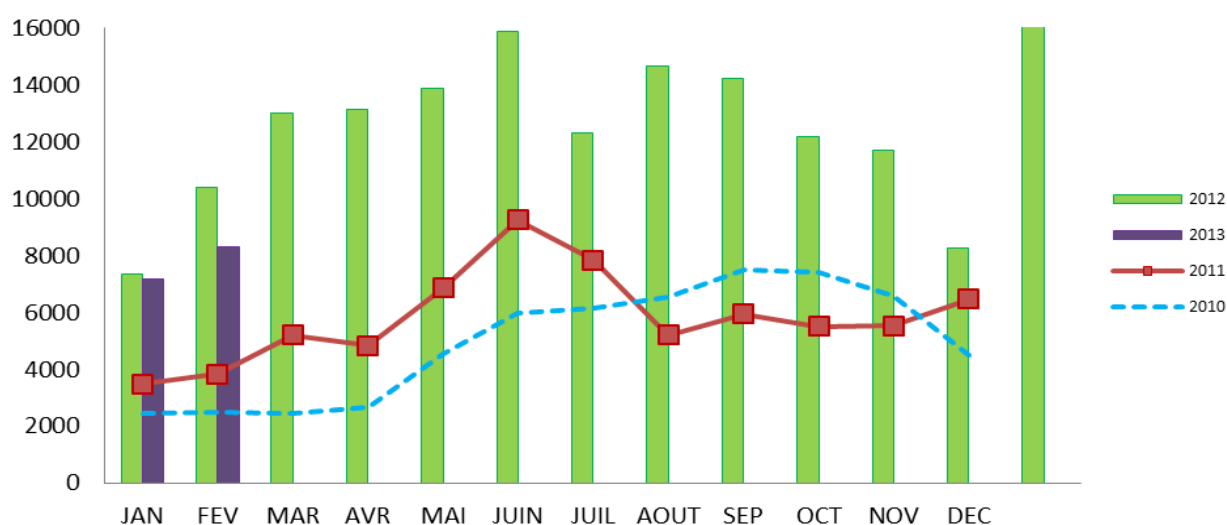
The results of the last nutrition survey with SMART methods conducted by UNICEF and the MoH on January 2013 (Post Harvest season) shows that the Global Acute Malnutrition Rate (GAM) in 6 regions of the Sahel belt is at or above the emergency threshold of 15%, while in the other regions, the GAM rate is critical (10% – 15%).

## Smart Survey January-February 2013



As of February 2013, 15,648 SAM children were admitted for treatment in 455 centers across the country. That represents an increase of 1163 children from January but admissions trends remains less than last year for the same period.

Chad-Number of new SAM admission in the Sahel Band



Chad-Number of new SAM admission in the Sahel Band												
	JAN	FEV	MAR	AVR	MAI	JUIN	JUIL	AOUT	SEP	OCT	NOV	DEC
2010	2430	2494	2453	2651	4555	5988	6133	6522	7500	7430	6592	4512
2011	3474	3833	5205	4834	6866	9244	7839	5207	5939	5515	5521	6459
2012	7348	10376	13006	13123	13889	15888	12305	14661	14242	12179	11687	8281
2013	7154	8317										

## HEALTH

- After the floods, UNICEF, in partnership with the Ministry of Health, WHO and UNFPA continued to support health centers and Toukra Farcha to provide primary health care to 30,000 displaced people until the end of February.
- UNICEF, in partnership with WHO, supported the Ministry of Health (MoH) to conduct a mass immunisation campaign in the response against the epidemic of yellow fever in Eastern Chad, that targeted 1,012,822 people, and achieved a 91% immunization coverage.

## EDUCATION

- UNICEF provided school supplies to cover the need of 112,577 primary school students in Kanem, Ouaddaï, Sila and Guera regions.
- UNICEF, in partnership with INTERSOS, supported the construction and equipment of 4 new classrooms in three (returnees' villages (Dorlong, Hadjer Beida and Awin Rado) in the Wadi Kadja province deserving more than 995 pupils.

## HIV/AIDS

- 20 educational chat sessions were conducted involving 300 people in the Toukra Site.
- 6 social mobilization sessions were conducted in Toukra site, reaching 3000 people.
- A voluntary HIV testing campaign was carried out, reaching 300 people. Among those tested, 3.3% had a positive serostatus, and 1.7% were indeterminate..
- UNICEF organized in February meeting of eTME implementing in 6 East regions.

## WASH

- Community Led Total Sanitation (CLTS) interventions conducted in 30 villages in Guera region.
- UNICEF built a water point serving more than 5,000 households in Kamina (Abeche)

## COMMUNICATION FOR DEVELOPMENT

- Support of C4D to EDC for micro planning and development plan implementation for polio and Response to Yellow Fever (DS Guereda, Adre, Iriba and Goz Beida) - February 2013.
- Support of C4D to PF-IEC members of the EDC, Heads of areas and SCR for the advocacy campaign organization, social mobilization to administrative authorities, traditional and religious, NGO partners and the public.
- Implementation - Starting operations of NGOs / Framework Agreements small scale (EPAs) with six (6) NGO partners in three regions - 8 districts / 14 Areas responsibilities difficult access and / or problems to ensure education and mobilization of households to vaccinate children during SIAs campaigns and routine immunization (EPI) in the East.

## CHILD PROTECTION

- Psychosocial support activities targeting 1,000 children with SAM in the Ndjama region were launched by UNICEF. In Abeche, 88 malnourished benefited from psychosocial support activities in the ABOUGOUDAN nutrition center. Over 4131 children displaced as a result of last year's flooding in Ndjama received psychosocial support through play activities in 3 child friendly spaces, namely: Farsha, Toukra 1 and Toukra 2

## SUPPLY AND LOGISTICS

Total Value of RUTF Supplies in USD							
Sector	Total Needs	Total Amount PGMs	In pipeline* MARCH 2013	Total Amount Received	In UNICEF Warehouse* * MARCH 2013	Delivered to Partners -- Cumulative MARCH 2013	Delivered to Partners – Since Last Report
<b>Nutrition (RUTF)</b>	150,000 cartons	61,000	61,000 cartons		2,586 cartons	18,500 cartons	18,5000 <sup>1</sup>
<b>Quantity Amount in \$US</b>	7,650,000 USD		3,111,000 USD		131,886 USD	943,500 USD	
* In Pipeline defined as PGM raised, not yet in UNICEF Warehouse							
**Current inventory in Warehouse = previous including pre-positioned + new							
This Table is exclusive of the value of freight charges							

**Next SitRep: 25 April 2013**

**For further information, please contact**

Bruno Maes  
Representative  
UNICEF Chad  
(+235) 66296060  
bmaes@unicef.org

Marcel Ouattara  
Deputy  
Representative  
UNICEF Chad  
(+235) 66790096  
mouattara@unicef.org

Guy Yogo  
Chief Emergency  
UNICEF Chad  
(+235) 66391014  
gyogo@unicef.org

<sup>1</sup> RUTF delivered to partners are from 2012 Sales Orders