

# UNICEF Chad Monthly Humanitarian Situation Report

Date: June 29<sup>th</sup> 2013

## Highlights

- 53,291 Severe Acute Malnutrition new admissions have been registered from January to May 2013, representing 42.3% of the 126,000 admissions expected in 2013.
- UNICEF and partners are strengthening their assistance to 50,000 refugees and returnees in Tissi in the context of renewed tensions and fighting in Darfur.



UNICEF Deputy Representative visiting Child Friendly Spaces in Kelle and Amdoukhoun (Tissi).

## Situation Overview & Humanitarian Needs

- **Estimated Affected Population**
- *(Estimates calculated based on initial figures from the General Population Census RGPH-INSEED 2009, SMART Survey June 2012)*

Categories	Total	Male	Female
Total Affected Population	6,252,536	3,170,036	3,082,500
Children Affected (Under 18)	3,588,956	1,819,601	1,769,355
Children Under Five	1,137,962	576,947	561,015
Children 6 to 23 months	340,763	172,767	167,996
Pregnant women with MAM	100,000	-	100,000
Children Under Five with Severe Acute Malnutrition (SAM)	126,000	64,000	62,000
Children Under Five with SAM and medical complications	12,730	6,454	6,276
Children Under Five with Moderate Acute Malnutrition (MAM)	430,000	210,000	220,000
IDPs and Returnees	181,000	85,000	96,000
Refugees	350,000	170,000	180,000

## Inter-Agency Collaboration and Partnerships

- Coordination meetings (HCT, Cluster meetings) are held on a monthly basis.
- The inter-cluster meeting was held regularly for data sharing, epidemic surveillance, implementation of coordination mechanism and security issues.

## Programme response

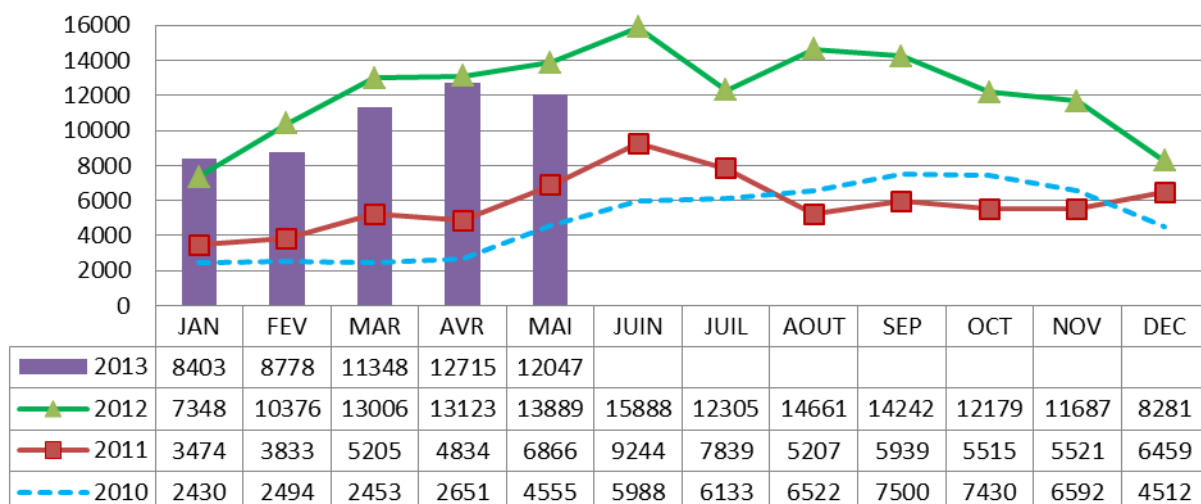
	Sector	Estimated # / % coverage	UNICEF & operational partners			Sector / Cluster		
			UNICEF Target	Cumulative results ( #)	% of Target Achieved	Cluster Target	Cumulative results ( #)	% of Target Achieved
<b>SAHEL NUTRITION CRISIS</b>	Nutrition	Children <5 with Severe Acute Malnutrition admitted to therapeutic care	126,000	53,291	42.3%	147,000*	53,291	36.3%
		Number of Health Centers with integrated nutrition program	476	439	92.2%	576	439	76.2%
	UNICEF Operational Partners: MOH, FRC, Alima, IMC, Base, ARNUT, Bambini, Centre NDA, MSF-CH, MSF-H, MSF-F, IRC, ACF, Merlin, CRT, CHORA, Concern , SOS TCHAD, ASSAR, SIF, World Vision Tchad							
	WASH	Number of Health Centers delivering the WASH in NUT packages	450	108	24.0%	450	108	24.0%
		# of SAM affected carer/mothers and children who receive hygiene kits with key hygiene messages	53,291*	2,994	5.6%	53,291	2,994	5.6%
		UNICEF Operational Partners: CHORA, Merlin, ASSAR, AFDI, IAS; *based on 68% of data completeness						
	Health	Children <1 receiving measles vaccination in refugee camps in Eastern Chad	84,487	5,558	6.5%	84,487	5,558	6.5%
		UNICEF Operational Partners: IMC, BASE, CSSI,CRT, MoH, MENTOR						
	Protection	# of children with SAM who received psychosocial care	50,000	2,166	4.3%	126,000	2,166	1.7%
		UNICEF Operational Partners: IMC, BASE, CSSI,CRT, MERLIN						

\* Cluster figures are different as additional regions in the South and centre are targeted that are not part of the Sahel Belt.

## ***UNICEF and partners' programming***

### **NUTRITION**

53,291 Severe Acute Malnutrition new admissions have been registered as of May, representing 42.3% of the 126,000 admissions expected in 2013.



UNICEF signed two (2) Programme Cooperation Agreements with CRT (Chadien Red Cross) and BASE (Bureau Appui Sciences et Environnement) to provide nutrition services in Ouaddai and Wadi Fira regions.

#### CHILD PROTECTION

- Ngouboua

A rapid assessment was conducted 13-16 May in the border town of Ngouboua, in which 790 people (173 women, 517 men) were displaced from Northern Nigeria. 237 unaccompanied Chadian children were identified. All children had been in Koranic schools in Nigeria and were under the guidance of their respective Marabouts. A rapid assessment of their family status established that they were in contact with their parents and reunification was on-going. Government policy to not create any camps along the border led to the immediate transportation of all returnees back to their communities of origin and the reunification of all children. Chadian Red Cross volunteers assured the safe reunification of the children.

- Tissi

Emergency child protection activities continued in Tissi, targeting returnees and refugees from Sudan. At least 3,600 children (1,500 girls, 2100 boys) accessed services provided at the nine child friendly spaces in the camp. 10 volunteers working in the nine child friendly spaces were trained on child rights and protection and basic hygiene. The Tissi host community was mobilized and sensitized on child protection issues, such as prevention of abuse and exploitation, including GBV.

#### WASH

- Through partnership agreements with IAS (International Aid Service), FPT (Future Porte Tchad) and AFDI (Association des Femmes pour le Developpement Integral), 18 boreholes and 120 emergency latrines were built, benefiting more than 30,000 people.

#### COMMUNICATION FOR DEVELOPMENT

- A mass vaccination campaign against polio was organized in the regions of Guera, Salamat, Batha; communications activities included meeting with partners, advocacy and social mobilization at all levels, and supervision at the field.

- UNICEF has deployed six C4D consultants to support routine EPI in Mongo, Melfi, Oum-hadjer, Ati, Aboudeia and Amtiman health districts.

#### HIV/AIDS

- 20 health workers were trained on Prevention of Mother to Child Transmission (PMTCT) of HIV/AIDS in the Bahr El Gazal region.

#### SUPPLY & LOGISTICS

Total Value of RUTF Supplies in USD							
Sector	Total Needs	Total Amount SOs	In pipeline* May 2013	Total Amount Received	In UNICEF Warehouse** May 2013	Delivered to Partners -- Cumulative May 2013	Delivered to Partners – Since Last Report
<b>Nutrition (RUTF)</b>							
<b>Quantity (Cartons)</b>	150,000	171,312	92,922	76,990	6,500	68,202	28,413
<b>Amount in \$US</b>	US\$7.5m	\$8.6m	\$4.6m	\$3.8m	\$325,000	\$3.4m	\$1.4m

\* In Pipeline defined as SO raised, not yet in UNICEF Warehouse  
 \*\*Current inventory in Warehouse = previous including pre-positioned + new  
 This Table is exclusive of the value of freight charges  
 N.B. The above data reflects what was in the pipeline and delivered in May 2013.

#### FUNDING UPDATE

Appeal sector	Requirements as per HAC January 2013	Funds Received to date	Unmet requirements	
			Amount	%
<b>Nutrition</b>	28, 943,500	7, 175,845	21, 767,655	75.2
<b>Health</b>	14, 445,000	4, 830,022	9, 614,978	66.5
<b>WASH</b>	7, 651,591	2, 222,850	6, 388,741	83.4
<b>Education</b>	5, 350,000	140,750	5, 309,250	99.2
<b>Child Protection</b>	2, 675,000	346,273	2, 328,727	87.0
<b>HIV/AIDS</b>	1, 230,500	8,103	1, 222,397	99.3
<b>Cluster/ Secteur Coordination</b>	600,000	600,000	0	0
<b>Total</b>	<b>60, 895,591</b>	<b>15, 323,843</b>	<b>45, 571,748</b>	<b>74.8</b>

\*The total includes a maximum recovery rate of 7%. The actual recovery rate on contributions will be calculated in accordance with UNICEF Executive Board Decision 2006/7 dated 9 June 2006.

**UNICEF wishes to express its deep gratitude to all public and private sector donors** for the contributions and pledges received which have made the current response possible. UNICEF would especially like to thank National Committees and donors that have contributed 'un-earmarked' funding, which comprised 14 per cent of the funds contributed. 'Un-earmarked' funding gives UNICEF essential flexibility to direct resources and ensure the delivery of life-saving supplies and interventions to where they are needed most – especially in the form of longer-term and predictable funding and in strengthening preparedness and resilience building. Continued donor support is critical to continue scaling up the response.

#### NEXT SITREP: JULY, 25TH 2013

For further information, please contact

Bruno Maes  
Representative  
UNICEF Chad  
(+235) 66296060  
bmaes@unicef.org

Marcel Ouattara  
Deputy  
Representative  
UNICEF Chad  
(+235) 66790096  
mouattara@unicef.org

Guy Yogo  
Emergency  
UNICEF Chad  
(+235) 66391014  
gyogo@unicef.org