

E/ICEF/2010/AB/L.7

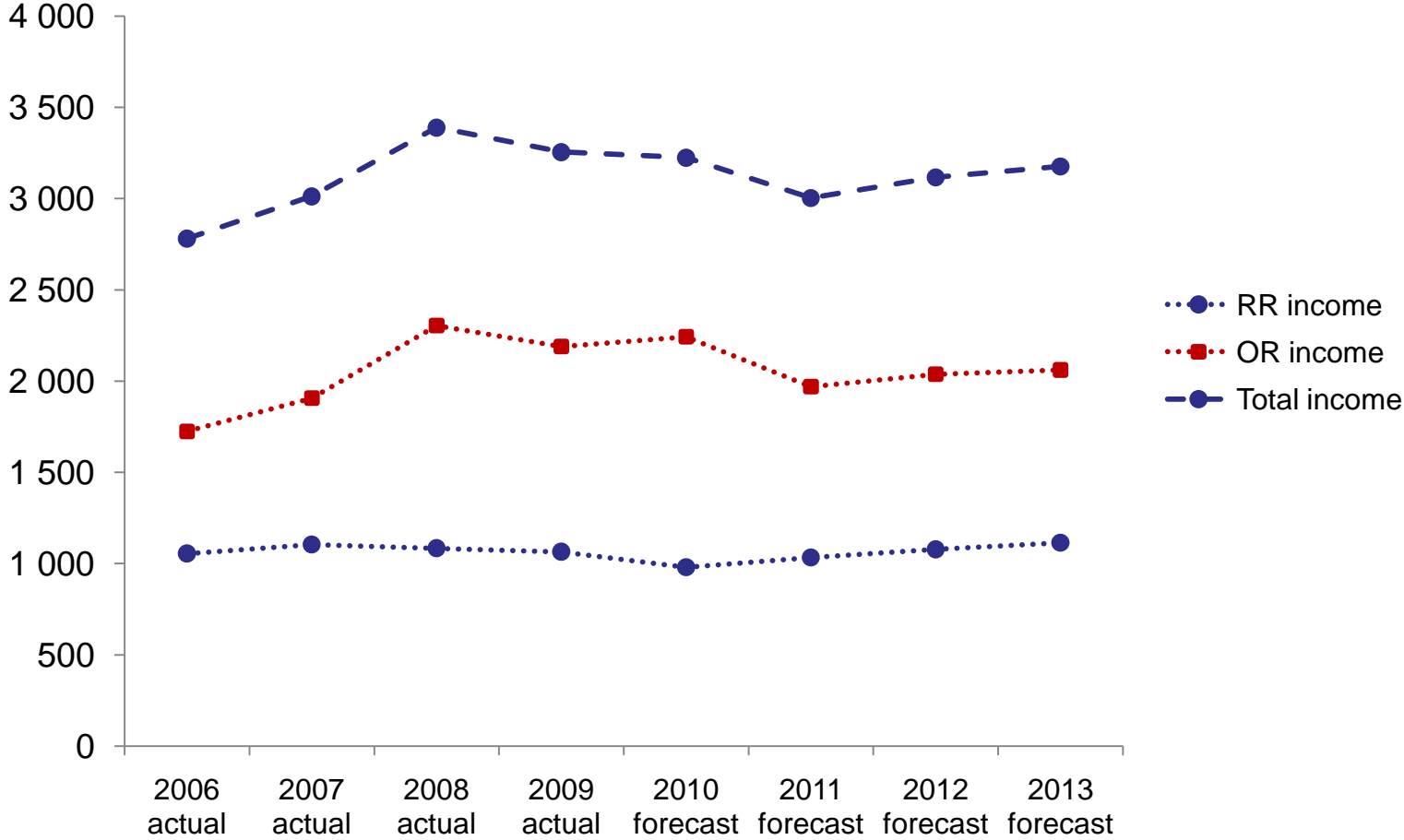
**Medium-term strategic plan:
planned financial estimates
for the period 2010-2013**

unite for
children

unicef 

Total Income: 2006 to 2013

(in millions of dollars)

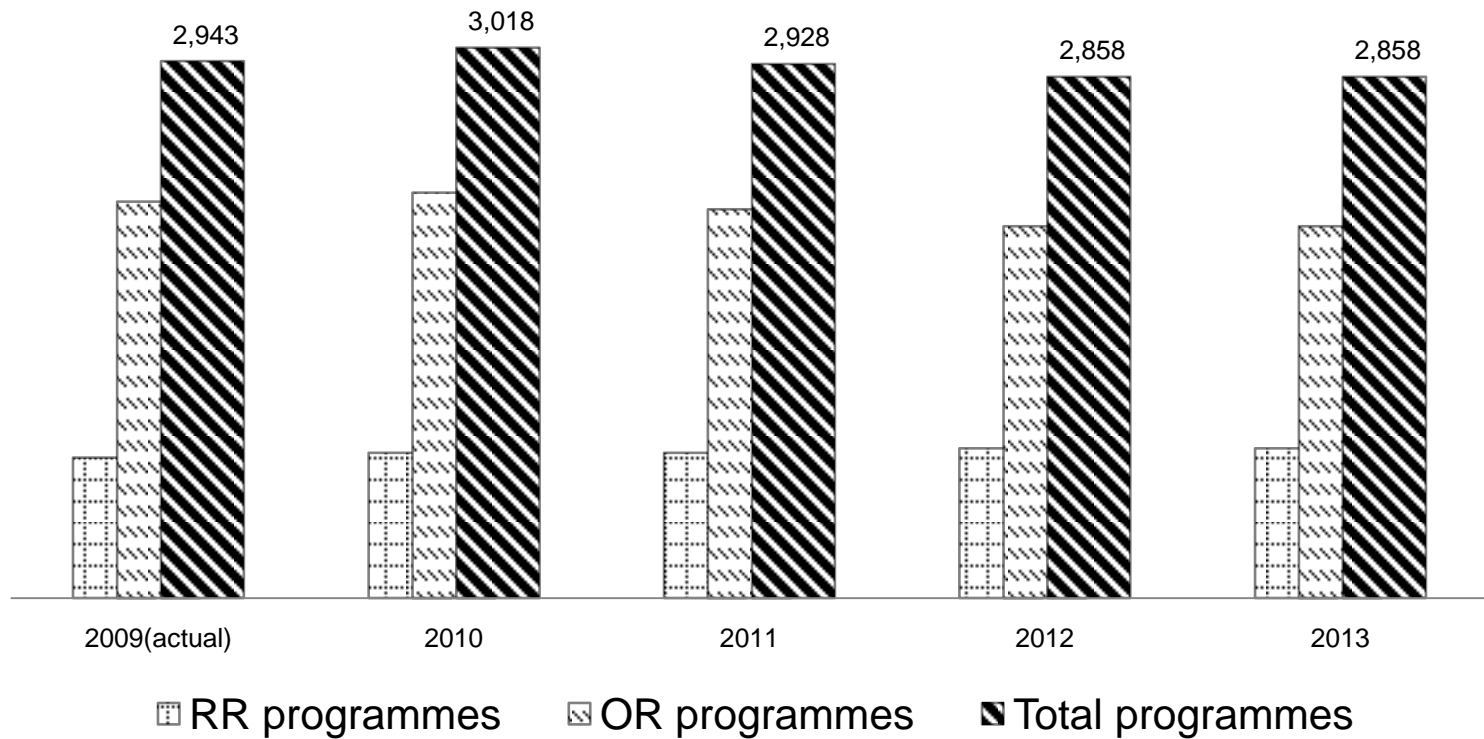


Issues Affecting Income Forecast

- Volatile foreign exchange
- Budget austerity measures
- Low interest rates

Programme Expenditure Projections: 2010 to 2013

(in millions of dollars)



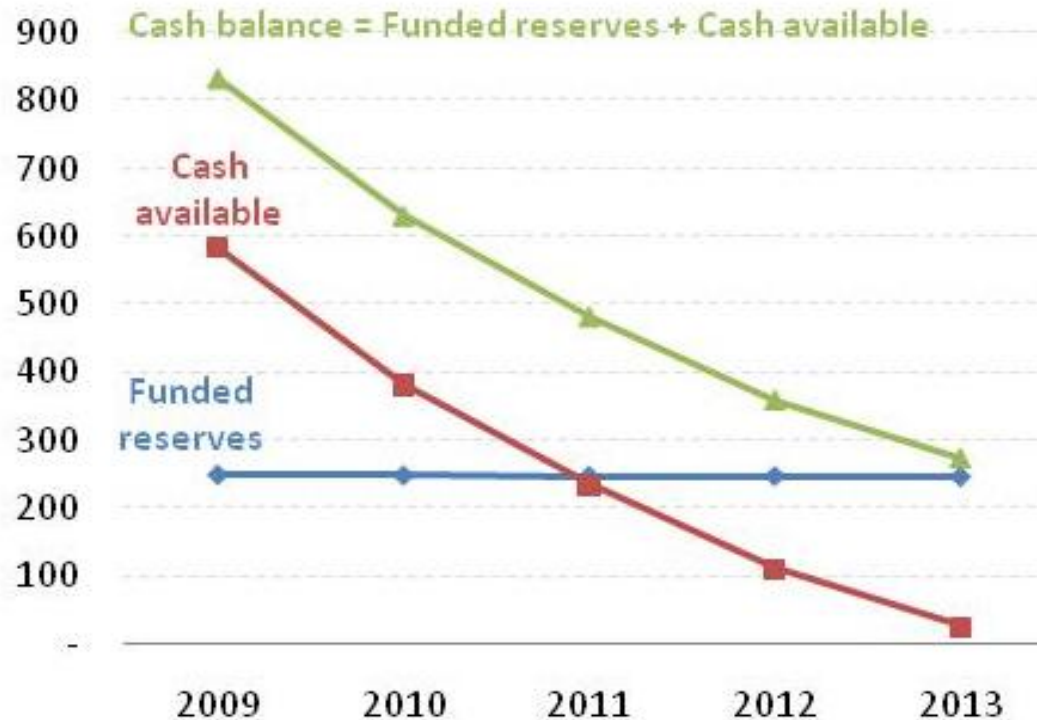
Total Income and Expenditure Projections: 2010 to 2013

(in millions of dollars)



- Other Considerations - Projected cash balances of Regular Resources

Internal liquidity requirement is estimated to be met for 2010 but not over the period 2011-2013, falling below the \$300 million threshold.



Other Considerations – Funded reserves

ASHI reserve balance as of 31 December 2009: \$210 million.

