

Cholera update - Guinea Bissau

Summary of data from May to October 19th 2008

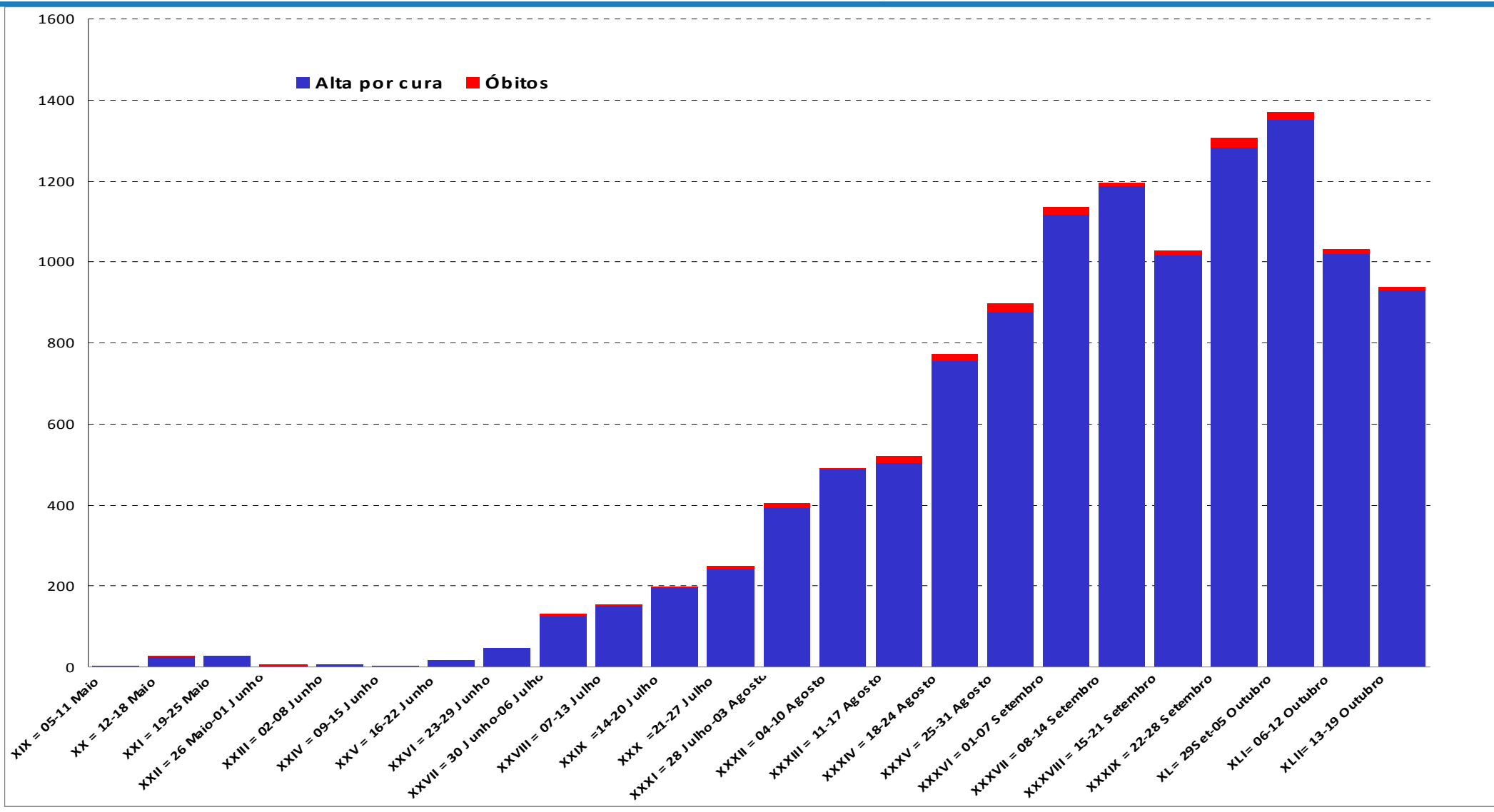
Prepared by WHO Country Office, Guinea-Bissau

Overview of the epidemic

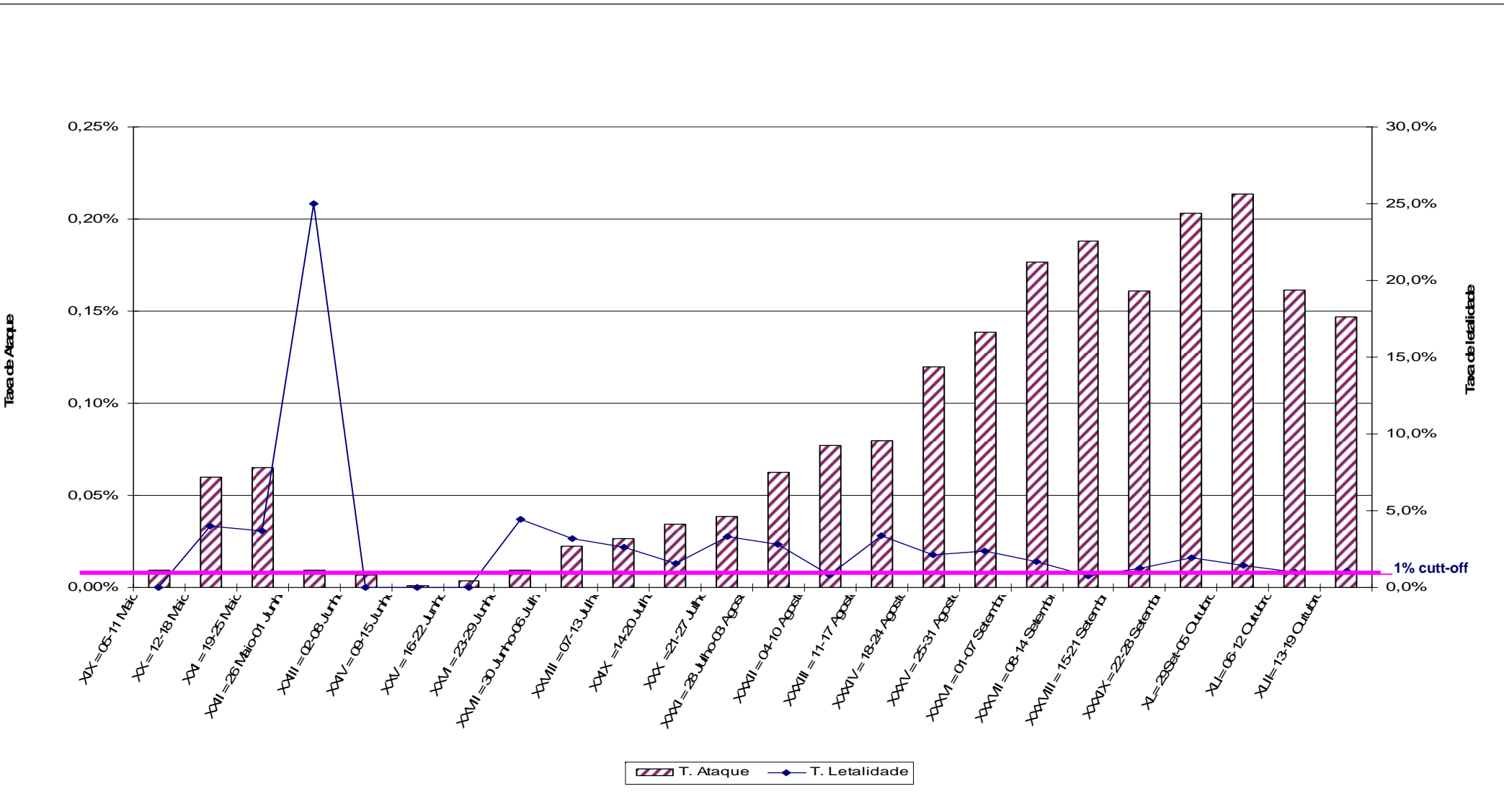
- 11,963 cumulative cases and 198 deaths in all 11 regions (case-fatality rate = 1.7% or 17 deaths per 1000 infected persons)
- 67% of all cases and 34% of all deaths are registered in Bissau, the capital.
- The highest attack rates (number of cases / population) are now in Bijagos, Biombo, Bissau, and Sao Domingos ranks respectively (2.5%, 2.4% and 2.0 – see map). Case management is worse in Quinara, Bafata and São Domingos (see slide 7)
- There are two consecutive weeks with cases declining. The epidemic is now increasing in the Bijagos archipelago whereas is almost finished in Tombali.



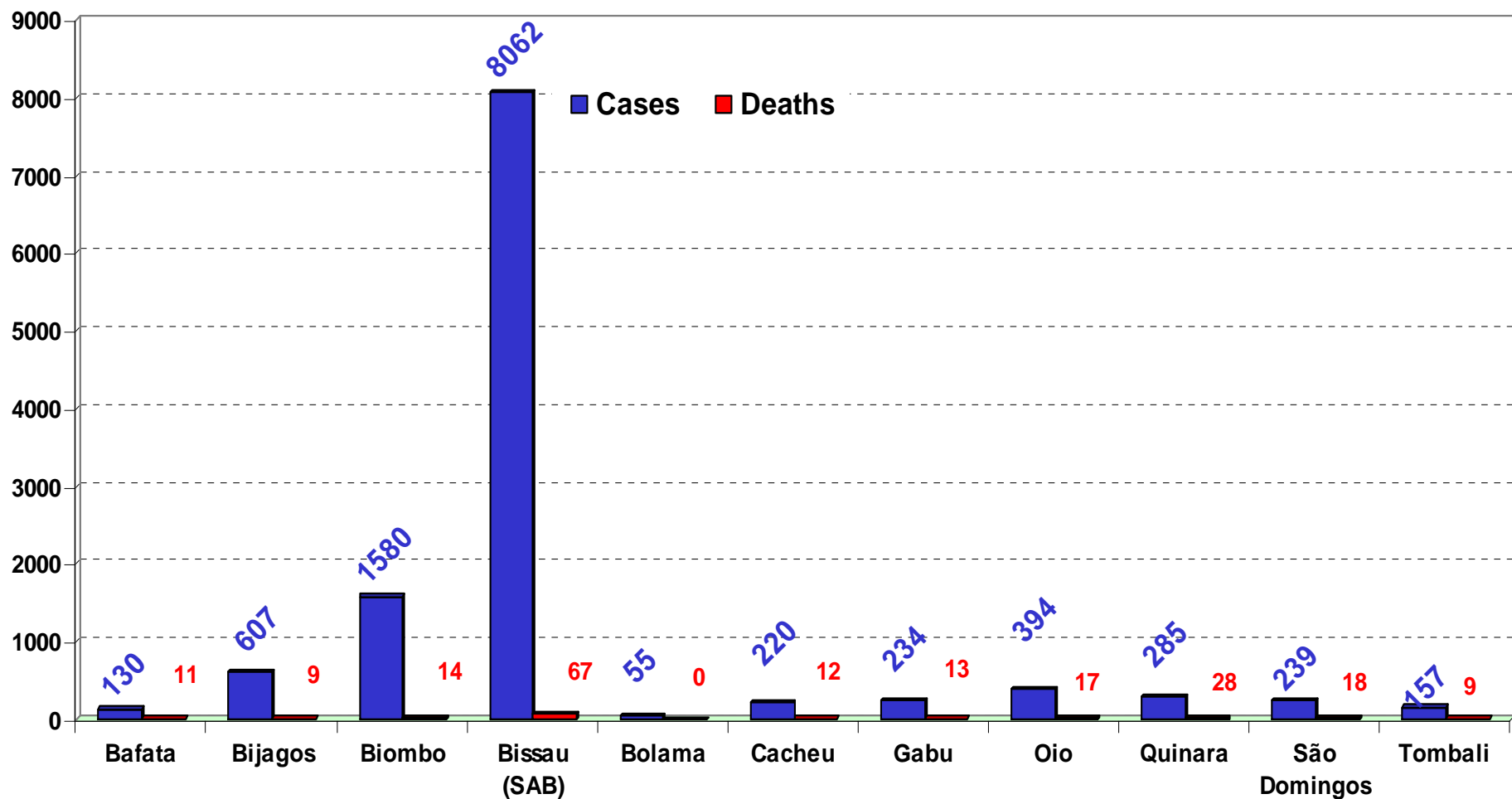
Total number of cholera cases and deaths by week – Guinea Bissau 2008



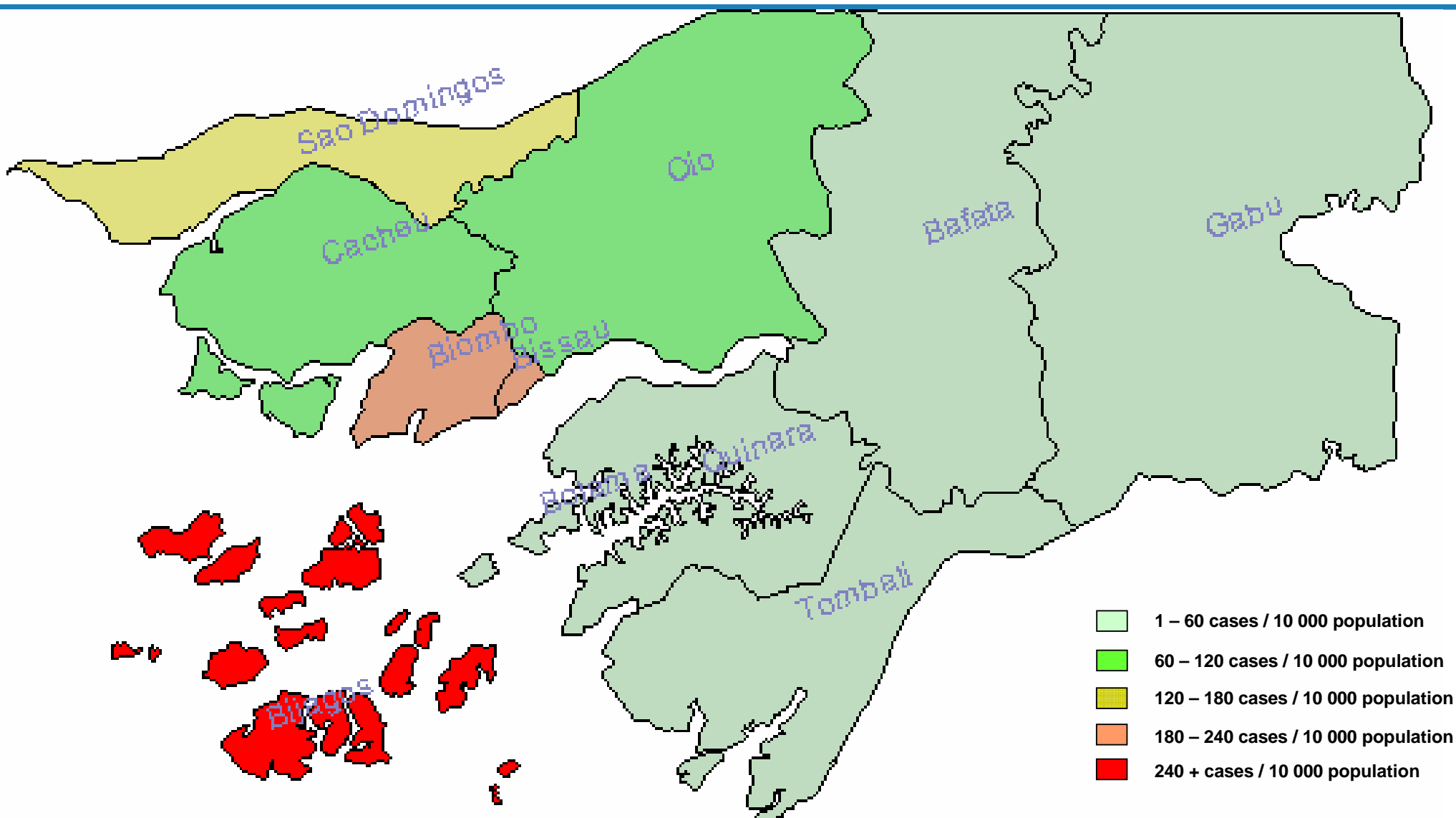
Weekly lethality and incidence of new cases – Guinea Bissau 2008



Total cholera cases and deaths by region – 2008, n=11.963



Number of cholera cases / 10.000 population by region, Guinea-Bissau 2008



Cholera case-fatality rate by region in Guinea-Bissau – 2008

