

Child Friendly School Reconstruction Project

Name of School: Valvai Sivaguru Vidyalaya, Jaffna

25th October, 2006



Introductory

Under the three-year Rebuilding with Children recovery plan, UNICEF at the request of the Ministry of Education has committed to build 28 schools to replace facilities damaged or destroyed by the tsunami. The United Nations Office for Project Services has signed an agreement with UNICEF to manage these projects. UNICEF has recently agreed on supporting the construction of an additional 7 schools where other donors have withdrawn.

At-a-glance...

- **No. of children: 650**
- **Location: Jaffna District**
- **Age group: 6-15 yrs**
- **Estimated date of completion: 30 April 2007**



Facilities Provided

- 17 Classrooms
- 1 Science Activity room
- 1 Agriculture room
- 1 Home science room
- 2 Computer rooms
- 1 Aesthetic room
- 1 Dancing room
- 1 Toy room
- 1 Library
- 1 Aesthetic room
- 1 Assembly hall
- 1 Principal's room
- 2 Pantries
- 2 Store rooms
- 1 Changing room
- 11 Toilets
- 1 Principal's quarters
- 1 staff quarters
- 2 Counsel rooms

'Child-friendly school' design concept developed by the Ministry of Education, UNICEF and UNOPS is being implemented. It focuses on the creation of child friendly learning spaces, which provide a learning environment that stimulates development of intellectual, social and physical capacities of children. This was developed in accordance with the Child Friendly School Concept as agreed in the MOU between UNICEF and the Ministry of Education.

Current Status as of October 2006

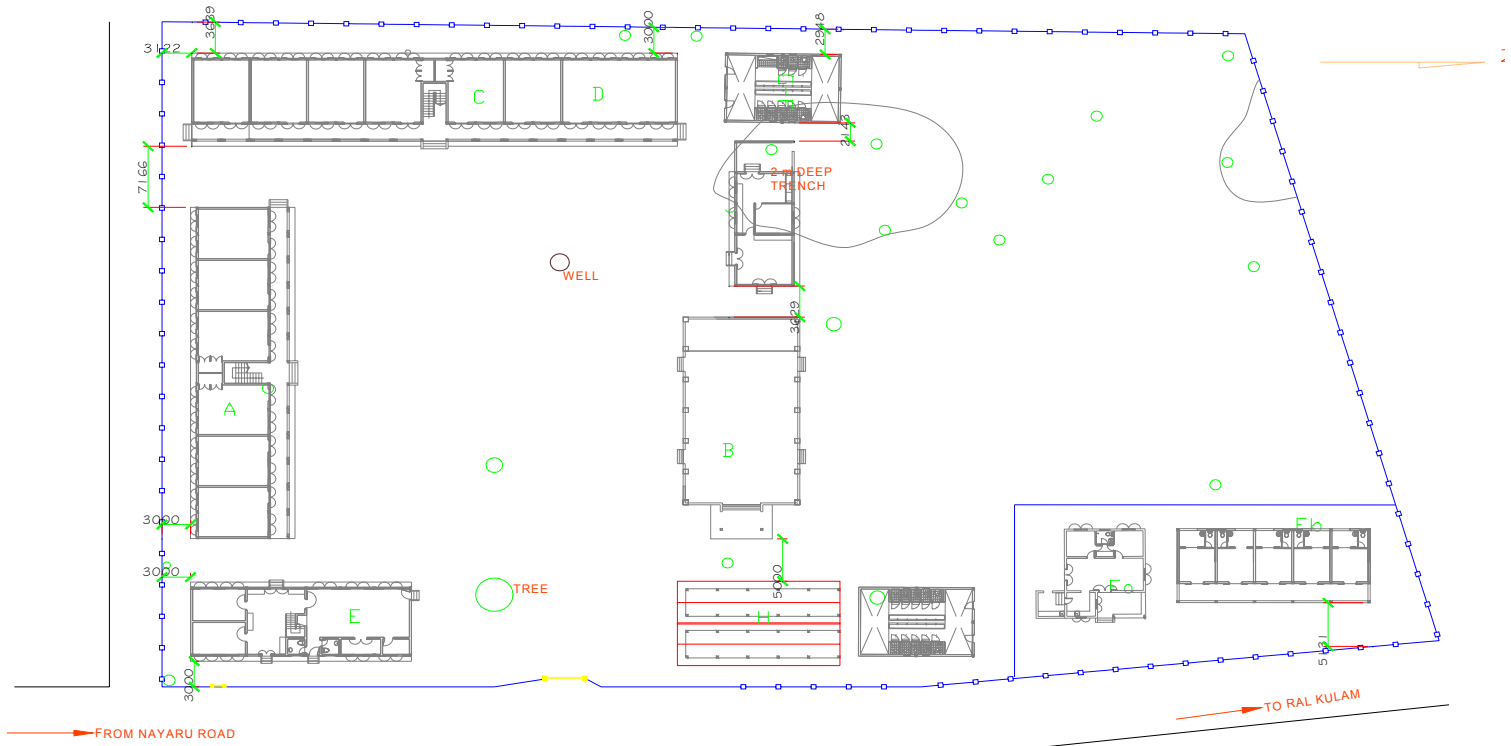
Land made available in July 2005. Mobilization has been completed and foundation has been laid. AS of August 31st 2006, work has been temporarily stopped due to the current security situation in the region



Milestones

- Land made available – 8 July, 2005
- Approval of master plan – 27 September 2005
- awarded/Commencement of construction – Land MOE approval for structural and architectural drawings – 22 December, 2005
- Issuance of tender documents – 8 Jan, 2006
- Contract Made Available

Architectural Drawing



KEY

- | | | |
|---|---------------------------|----------------------|
| A - CLASS ROOM BLOCK | E - ADMINISTRATION | H - BICYCLE SHED |
| B - ASSEMBLY HALL | Fa - PRINCIPAL'S QUARTERS | J- CANTEEN & KITCHEN |
| C - CLASS ROOM BLOCK | Fb - STAFF QUARTERS | |
| D - ACTIVITY ROOM, MUSIC ROOM, HOME SCIENCE ROOM, AGRICULTURE ROOM, O/L LAB | GM - MALE TOILETS | |
| | GF - FEMALE TOILETS | |