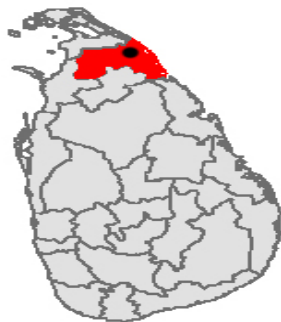


Child Friendly School Reconstruction Project

Name of School: Valayanmandam - Mullaithivu

25th October, 2006



Introductory

Under the three-year Rebuilding with Children recovery plan, UNICEF has committed to build 19 schools to replace facilities damaged or destroyed by the tsunami. The United Nations Office for Project Services has signed an agreement with UNICEF to manage these projects.

At-a-glance...

- **No. of children:**
100
- **Location:**
Valayanmada,
Mullaithivu District
- **Age group:** 6-10
yrs
- **Estimated date of
completion:**
March 2007



Facilities Provided

- 8 Classrooms
- Principal's room
- Vice Principal's room
- Staff Room
- 10 toilets
- Pantry
- Store
- Lobby
- Computer Lab
- Laboratory
- Kitchen
- Canteen
- Dancing room
- Music Room
- Bike Shades
- Assembly Hall

'Child-friendly school' design concept developed by the Ministry of Education, UNICEF and UNOPS is being implemented. It focuses on the creation of child friendly learning spaces, which provide a learning environment that stimulates development of intellectual, social and physical capacities of children. This was developed in accordance with the Child Friendly School Concept as agreed in the MOU between UNICEF and the Ministry of Education.

Current Status as of October, 2006

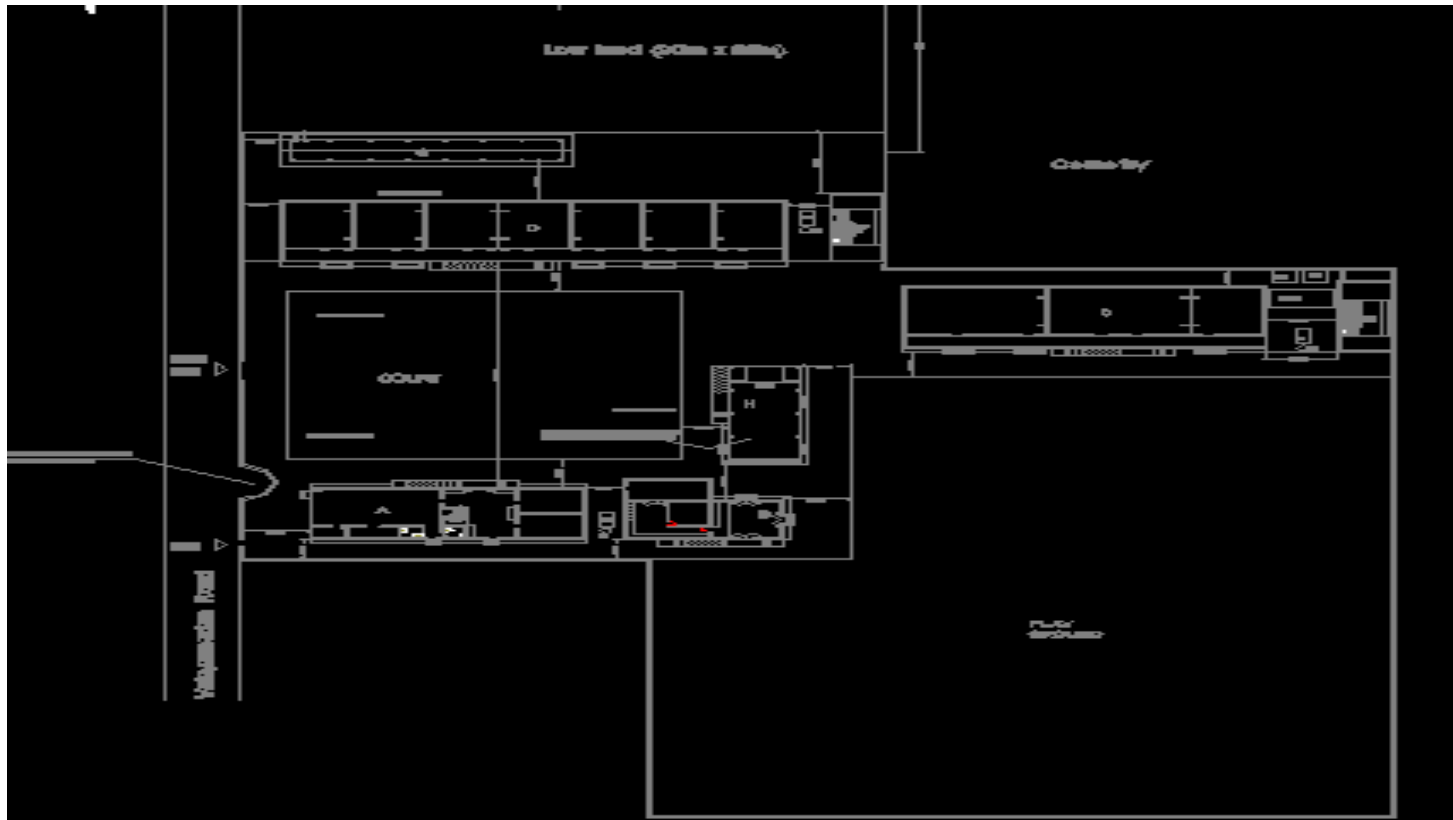
Land made available in 30 March '05. The architectural, structural designs, working drawings and technical specifications designs have been completed. Call for bids were made in Oct '05. Advertisements for bids were made available, responses were received with negotiations in progress with close evaluation.



Milestones

- Land made available – 30 March 2005
- Approval of master plan – 25 April 2005
- MOE approval for structural and architectural drawings – 9 September 2005
- Issuance of tender documents – 9 October 2005
- Contract awarded/Commencement of construction – Land Made Available

Architectural Drawing



LEGEND

A – Administration & Computer Blocks
B – Canteen and Kitchen
C – Toy Room/Activity Room
D – Class Rooms 1 – 7

E – Male Toilet Block
F – Female Toilet Block
G – Bike Shed
H – Assembly Hall SCALE – 1:500