

# How to enable macro in Excel 2007

UNICEF Supply Division  
Immunization Centre

unite for  
children

unicef 

# How to enable Macros in your excel 2007

**1. Click Excel 2007 Office Button**

**2. Click Excel Options**

Specifications				Shipment Totals		
Height (cm)	Volume (cm3)	Gross Weight (kg)	No. of Inner Cartons	Inner Carton Volume (m3)	Inner Carton Weight (kg)	
7.00	1,792	0.59	0	0.000	0	

Shipping Carton Specifications				Shipment Totals				
# Inner Cartons	Length (cm)	Width (cm)	Height (cm)	Volume (m3)	Gross Weight (kg)	No. of Shipping Cartons	Shipping Carton Volume (m3)	Shipping Carton Weight (kg)
23	0.71	0.62	0.49	0.22	29.80	0	0.00	0

**Diluent - Storage Temperature: Dry Storage**

Inner Carton Specifications					Shipment Totals			
# Vials	Length (cm)	Width (cm)	Height (cm)	Volume (cm3)	Gross Weight (kg)	No. of Inner Cartons	Inner Carton Volume (m3)	Inner Carton Weight (kg)
25	16.00	16.00	7.00	1,792	1.50	0	0.000	0

# How to enable Macros in your excel 2007

The screenshot shows the Microsoft Excel 2007 interface with the 'Excel Options' dialog box open. The 'Trust Center' option is selected in the left-hand menu. The 'Trust Center Settings...' button is highlighted with a red dashed box. The background spreadsheet contains data for 'COLD CHAIN' and 'Vaccine - Storage'.

COLD CHAIN	
<b>Shipment Data</b>	
Vaccine	M
Supplier	S
Quantity (Vials)	
<b>Vaccine - Storage</b>	
# Vials	25
# Inner Cartons	23
<b>Diluent - Storage T</b>	
# Vials	25

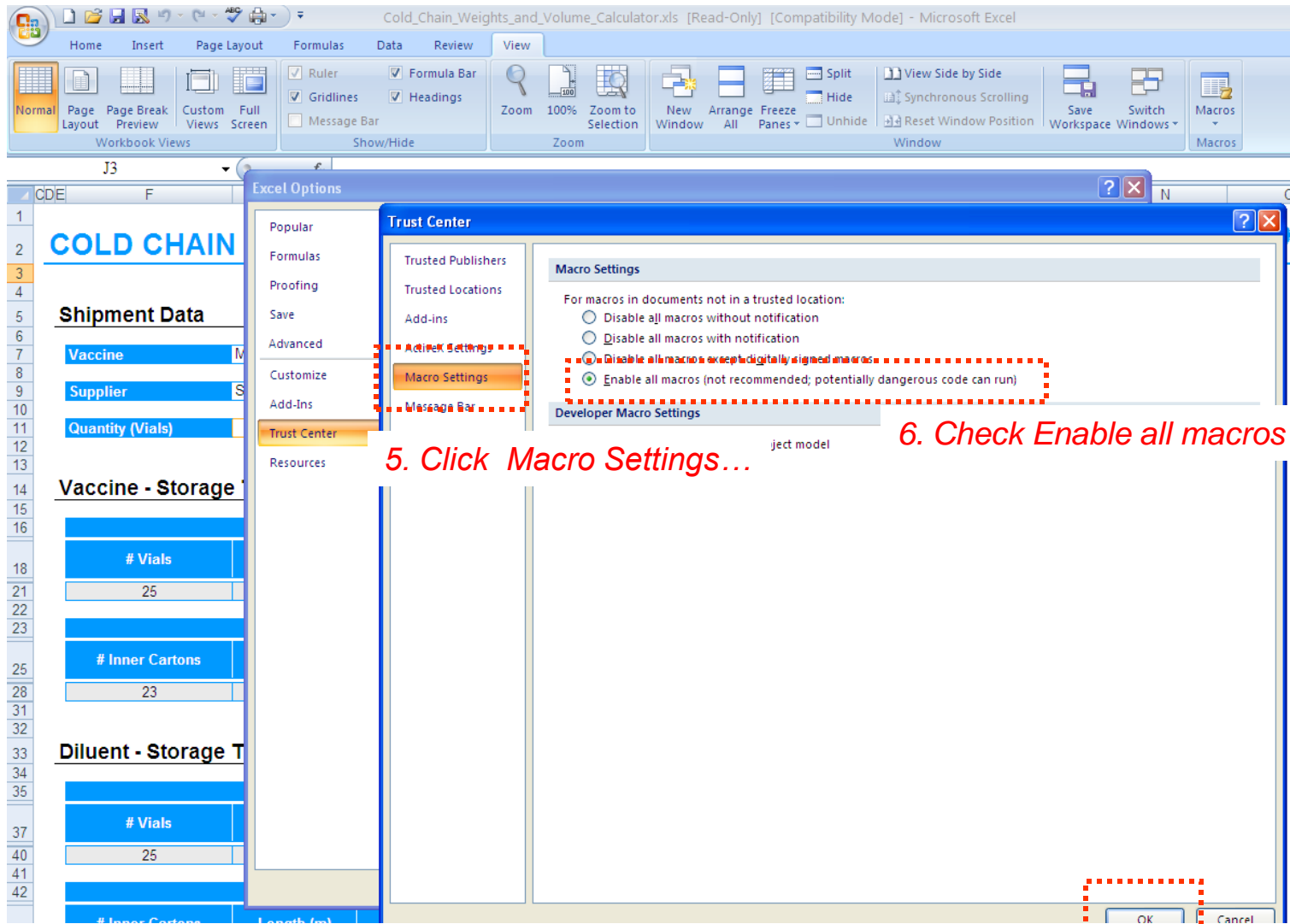
**Excel Options**

- Popular
- Formulas
- Proofing
- Save
- Advanced
- Customize
- Add-ins
- Trust Center**

**3. Click Trust Center**

**4. Click Trust Center Settings...**

# How to enable Macros in your excel 2007



5. Click Macro Settings...

6. Check Enable all macros

7. Click OK button

**Thank You**