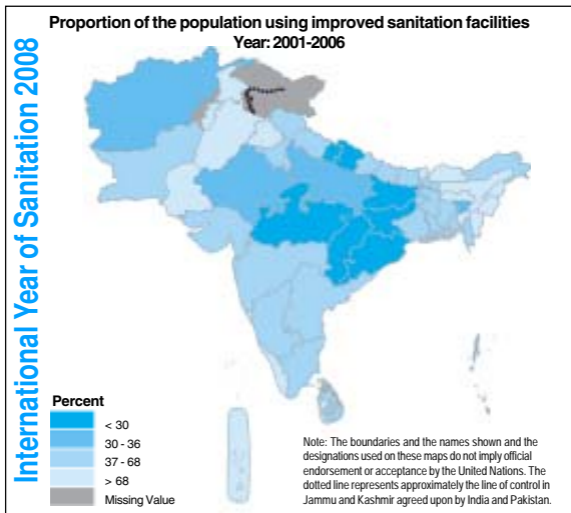


Statistical Pocketbook

Socio-economic Indicators for South Asia



CALENDAR 2008

United Nations Children's Fund
Regional Office for South Asia
P. O. Box 5815
Lekhnath Marg
Kathmandu, Nepal

Telephone: 977-1-4417082
Facsimile 977-1-4418466/4419479
www.unicef.org
rosa@unicef.org
ykrai@unicef.org

JANUARY 2008

S	M	T	W	T	F	S
		1	2	3	4	5
6	7	8	9	10	11	12
13	14	15	16	17	18	19
20	21	22	23	24	25	26
27	28	29	30	31		

FEBRUARY 2008

S	M	T	W	T	F	S
					1	2
3	4	5	6	7	8	9
10	11	12	13	14	15	16
17	18	19	20	21	22	23
24	25	26	27	28	29	

MARCH 2008

S	M	T	W	T	F	S
30	31					1
2	3	4	5	6	7	8
9	10	11	12	13	14	15
16	17	18	19	20	21	22
23	24	25	26	27	28	29

APRIL 2008

S	M	T	W	T	F	S
		1	2	3	4	5
6	7	8	9	10	11	12
13	14	15	16	17	18	19
20	21	22	23	24	25	26
27	28	29	30			

MAY 2008

S	M	T	W	T	F	S
					1	2
3	4	5	6	7	8	9
10	11	12	13	14	15	16
17	18	19	20	21	22	23
24	25	26	27	28	29	30
31						

JUNE 2008

S	M	T	W	T	F	S
1	2	3	4	5	6	7
8	9	10	11	12	13	14
15	16	17	18	19	20	21
22	23	24	25	26	27	28
29	30					

JULY 2008

S	M	T	W	T	F	S
		1	2	3	4	5
6	7	8	9	10	11	12
13	14	15	16	17	18	19
20	21	22	23	24	25	26
27	28	29	30	31		

AUGUST 2008

S	M	T	W	T	F	S
31					1	2
3	4	5	6	7	8	9
10	11	12	13	14	15	16
17	18	19	20	21	22	23
24	25	26	27	28	29	30

SEPTEMBER 2008

S	M	T	W	T	F	S
	1	2	3	4	5	6
7	8	9	10	11	12	13
14	15	16	17	18	19	20
21	22	23	24	25	26	27
28	29	30				

OCTOBER 2008

S	M	T	W	T	F	S
			1	2	3	4
5	6	7	8	9	10	11
12	13	14	15	16	17	18
19	20	21	22	23	24	25
26	27	28	29	30	31	

NOVEMBER 2008

S	M	T	W	T	F	S
30						1
2	3	4	5	6	7	8
9	10	11	12	13	14	15
16	17	18	19	20	21	22
23	24	25	26	27	28	29

DECEMBER 2008

S	M	T	W	T	F	S
	1	2	3	4	5	6
7	8	9	10	11	12	13
14	15	16	17	18	19	20
21	22	23	24	25	26	27
28	29	30	31			

Personal Information

Name:.....

Address:.....

P.O. Box:

Phone:.....

Mobile:.....

Email:.....

Legend

The social indicators in this collection are well-understood. The economic indicators selected show the performance of the economy as a basis for the capacity of the country, and families, to provide for children.

- Human development index (HDI) is a composite index that measures the average achievements in a country in three basic dimensions of human development: a long and healthy life, as measured by life expectancy at birth; knowledge, as measured by the adult literacy rate and the combined gross enrolment ratio for primary, secondary and tertiary schools; and a decent standard of living, as measured by gross domestic product (GDP) per capita in purchasing power parity (PPP) US dollars.
- Human Poverty Index (HPI) is a composite index measuring deprivations in the three basic dimensions captured in the human development index—a long and healthy life, knowledge and a decent standard of living.
- Gender related development index (GDI) is a measure of human development that adjusts the human development index (HDI) to penalize for disparities between women and men in the three dimensions of the HDI: a long and healthy life, knowledge and a decent standard of living.
- Gender empowerment measure (GEM) is a composite index measuring gender inequality in three basic dimensions of empowerment—economic participation and decision-making, political participation and decision-making and power over economic resources.
- Gross National Income (GNI) per capita is the sum of value added by all resident producers, plus any product taxes (less subsidies) not included in the valuation of output, plus net receipts of primary income (compensation of employees and property income) from abroad. GNI per capita is gross national income divided by midyear population. GNI per capita in US dollars is converted using the World Bank Atlas method.
- Gini coefficient is a measure of income inequality. The closer to 0, the more equally income is distributed; the closer to 1, the higher income inequality.
- Least developed country (LDC) status: Criteria for inclusion in the list of LDCs are population less than 75 million; per capita GNI less than US\$ 750; Human assets index (HAI) less than 55, and Economic Vulnerability Index (EVI) greater than 37. A country must meet all the criteria.
- Gross domestic product (GDP) is the sum of value added by all resident producers plus any product taxes (less subsidies) not included in the valuation of output.
- World Trade Organization (WTO) membership: has implications for participating in international trade negotiations, which in turn has implications for access to markets and government decisions on economic policy.

- Growth rate of real and p.c. real product: GDP growth rate and its per capita increase indicative of a country's and household's economic capacity to look after children.
- Economic vulnerability index (EVI) shows susceptibility or vulnerability to economic crisis. It is measured as the average of five indicators: (a) merchandise export concentration; (b) instability of exports earnings; (c) instability in agricultural production; (d) share of manufacturing and modern services in GDP; and (e) population size. A level of 37 is the risk threshold.
- Total debt service as % of GDP indicates the share of GDP needed to pay for international debt, with a ratio above 60% indicating risk.
- Total debt service as % of exports is the share of foreign exchange earnings used to pay for international debt, with a ratio above 20% indicating risk.
- Current account balance: a positive shows that a country is receiving financial inflows from trade, investment and remittances that exceed its spending on the same.
- Workers' remittance is the repatriated earnings from work outside the home economy.
- Workers' remittance as % of exports is indicative of the extent to which countries rely on remittances for income and foreign exchange.
- Overseas development assistance (ODA) inflows are indicative of external donor support to the country.
- High technology exports can be indicative of a country's knowledge status, because they suggest higher value added in the country based on R&D and skills.
- Central government expenditures (% of GDP) comprise all nonrepayable payments to both current and capital expenses, plus net lending. These amounts are computed as a share of GDP at current prices.

International treaties and conventions:

Selected international norms which relate directly to child rights.

Graph 1: The World Bank Group, *Millennium Development Goals in South Asia*, website: <http://ddp-ext.worldbank.org/ext/GMIS/gdmis.do?siteId=2&menuId=LNAV01REGSUB5>

Note for maps:

- Data refers to the most recent year available during the period specified
- The boundaries, and the names shown and the designations used on these maps do not imply official endorsement or acceptance by the United Nations. The dotted line represents approximately the Line of Control in Jammu and Kashmir agreed upon by India and Pakistan. The final status of Jammu and Kashmir has not yet been agreed upon by the parties.

AFGHANISTAN

Population

Total population (thousands, 2006) ¹	26,088	
Population aged under 18 (thousands, %, 2006) ¹	13,982	54
Population aged under 5 (thousands, %, 2006) ¹	4,823	18
Population annual growth rate (%, 1990-2006) ¹		4.5

Poverty/Inequality

HDI (rank, value, 2005) ¹³	n.a.	n.a.
HPI-1 (rank, value) ¹³	n.a.	n.a.
GDI (rank, value) ¹³	n.a.	n.a.
GEM (rank, value) ¹³	n.a.	n.a.
GNI per capita (US\$, 2006) ¹	250x	
Gini index ¹³	n.a.	
Population below the income poverty line 1 \$ a day (%, 1990-2005*) ¹³	n.a.	
Population below the national poverty line (%, 1990-2004*) ¹³	n.a.	

MDG Performance^{10#}

Early achiever:	TB prevalence, TB death rate, CO ₂ emissions, Ozone-depleting potential CFC- consumption, Water urban
On-track:	Underweight children, HIV prevalence, Protected area, Water rural, Sanitation rural
Slow:	Gender primary enrolment, Under 5 mortality, Infant mortality
Regressing:	Gender secondary enrolment, Forest cover

Government

Total government expenditure as % of GDP (2005) ⁶	14.5
Education as % of total government expenditure (1995-2005*) ¹	n.a.
Health as % of total government expenditure (1995-2005*) ¹	n.a.
Defence as % of total government expenditure (1995-2005*) ¹	n.a.

Economy

LDC status ¹⁰	Yes	
WTO membership ¹⁷	Observer status	
Average annual growth rate of total real product (2004-05) ¹⁵	13.8	
Average annual growth rate of per capita real product (2004-05) ¹⁵	9.3	
EVI (2004) ¹²	60.3	
Total debt service as % of GDP (1990, 2005) ¹³	n.a.	n.a.
Total debt service as % of exports of goods, service & net income from abroad (1990, 2005) ¹³	n.a.	n.a.
Balance of payments: current account balance (US\$ millions, 2005) ⁶	-68	
Workers' remittances receipts, total amount (US\$ millions, 2005) ²⁰	n.a.	
Workers' remittances receipts, as percentage of exports of goods & services (2005) ²⁰	n.a.	
ODA received (net disbursements), total amount (US\$ millions, 2005) ¹³	n.a.	
ODA received (net disbursements) per capita (US\$, 2005) ¹³	n.a.	
High-technology exports as % of manufactured exports (1990, 2005) ¹³	n.a.	n.a.

Health & Nutrition

Infant mortality rate (per 1,000 live births, 1990, 2006) ¹	168	165	
Under 5 mortality rate (per 1,000 live births, 1990, 2006) ¹	260	257	
Maternal mortality ratio (per 100,000 live births, adjusted, 2005) ¹	1,800		
Skilled attendance at delivery (%, 2000-2006*) ¹	14		
Population using improved drinking water sources (% - total, urban, rural, 2004) ¹	39	63	31
Population using adequate sanitation facilities (% - total, urban, rural, 2004) ¹	34	49	29
Children under 1 immunized against BCG, DPT 3, Polio 3, Measles (%, 2006) ¹	90	77	68
Adult HIV/AIDS prevalence rate (15-49 years, %, end 2006) ¹	<0.1		

AFGHANISTAN

Total fertility rate* (2006) ¹	7.2		
Underweight moderate and severe (under 5 children, %, 2000-2006*) ¹	39		
Vitamin A supplementation coverage rate (6-59 months, %, -at least one dose, 2005) ¹	95		
Households consuming iodized salt (%, 2000-2006*) ¹	28		

Education

Primary school net enrolment ratio (% - male, female, 2000-2006*) ¹		n.a.	n.a.
Primary completion rate as % of relevant age group (total, 2005) ¹⁶	32.3		
Females as % of males, primary school enrolment (enrolled, attending, 2000-2006*) ¹	n.a.	61	
Females as % of males, secondary school enrolment (enrolled, attending, 2000-2006*) ¹	n.a.	33	
Adult literacy rate (% - total, male, female, 2000-2004*) ³⁴	28	43	13
Youth (15-24 years) literacy rate (% , male, female, 2000-2006*) ¹		51	18
Primary school entrants reaching grade 5 (%, survey data, 2000-2006*) ¹	92		

Child Protection & Emergency Situation

Juvenile justice and children in conflict with the law			
Birth registration (% - total, urban, rural, 1999-2006*) ¹	6	12	4
Minimum age for criminal responsibility ²⁶	12 years		
Child labor			
Minimum age for work [†]	14 years		
5-14 years old children who are working (% - total, male, female, 1999-2006*) ¹	30	28	33
Early marriage			
Legal age of marriage- male [‡]	18 years		
Legal age of marriage- female [‡]	16 years		
Girls married before the age of 18 years (% - total, urban, rural, 1987-2006*) ¹	43	n.a.	n.a.
Children killed during armed conflict (2007) ²⁷			n.a.
Children recruited by armed groups (2007) ²⁷			n.a.
Persons recognized as refugees (2006) ⁺⁺²⁸			35
Internally displaced persons protected by UNHCR (2006) ⁺⁺⁺²⁸			129310

International and Regional Conventions

Convention on the Rights of the Child (CRC, 1989) ⁸	27-Apr-94r
Optional Protocol to the CRC on the Involvement of Children in Armed Conflict (CRC-OP-AC, 2000) ⁸	24-Oct-03a
Optional Protocol to the CRC on the Sale of Children, Child Prostitution and Child Pornography (CRC-OP-SC, 2000) ⁸	19-Oct-02a
Convention on the Elimination of All Forms of Discrimination against Women (CEDAW, 1979) ⁸	4-Apr-03r
Optional Protocol to CEDAW (CEDAW-OP, 1999) ⁸	n.r.
Convention on the Elimination of All Forms of racial Discrimination (CERD, 1965) ⁸	5-Aug-83a
Covenant on Civil and Political Rights (CCPR, 1966) ⁸	24-Apr-83a
Covenant on Economic, Social and Cultural Rights (CESCR, 1966) ⁸	24-Apr-83a
Forced Labour Convention No. 29 (1930) ⁵	n.r.
Abolition of Forced Labour Convention No. 105 (1957) ⁵	16-May-63r
Convention against Discrimination in Education (1960) ⁹	n.r./n.s.
Convention on Technical and Vocational Education (1989) ⁹	n.r./n.s.
Convention No. 138 on Minimum Age (1973) ⁵	n.r.
Convention No. 182 on Worst Forms of Child Labour (1999) ⁵	n.r.
Convention on Consent to Marriage, Minimum Age for Marriage and Registration of Marriages (1962) ²¹	n.r./n.s.
Rome Statute of the International Criminal Court (1998) ²²	10-Feb-03a
Convention No. 87 on Freedom of Association and Protection of the Right to Organize (1948) ⁵	n.r.
Convention No. 98 on the Right to Organize and Collective Bargaining (1949) ⁵	n.r.
Convention on Protection of Children and Cooperation in respect of Inter-country Adoption (1993) ⁴	n.s.
Convention on the Protection of the Rights of All Migrant Workers and Members of their Families (1990) ⁸	n.r./n.s.
Mine Ban Treaty (1997) ³	11-Sep-02a
Geneva Convention (IV) relative to the Protection of Civilian Persons in Time of War (1949) ⁷	26-Sep-56
Protocol I to the Geneva Conventions relating to the Protection of Victims of International Armed Conflicts (1977) ⁷	n.r.
Protocol II to the Geneva Conventions relating to the Protection of Victims of Non-International Armed Conflicts (1977) ²³	n.r./n.s.
Protocol to Prevent, Suppress and Punish Trafficking in Persons, especially Women and Children supplementing the United Nations Convention against Transnational Organised Crime (2000) ²	n.s.
SAARC Convention on Preventing and Combating Trafficking in Women and Children for Prostitution (2002) ¹⁸	Non member
SAARC Convention on Regional Arrangements for the Promotion of Child Welfare in South Asia (2002) ¹⁹	n.r./n.s.

Notes:

† Minimum age for work: Labour Law 1999

‡ Legal age of marriage: Civil law 1996, Article 70 and 71

BANGLADESH

Population

Total population (thousands, 2006) ¹	155,991	
Population aged under 18 (thousands, %, 2006) ¹	64,194	41
Population aged under 5 (thousands, %, 2006) ¹	18,951	12
Population annual growth rate (%, 1990-2006) ¹		2

Poverty/Inequality

HDI (rank, value, 2005) ¹³	140 of 177	0.547
HPI-1 (rank, value) ¹³	93	40.5
GDI (rank, value) ¹³	121	0.539
GEM (rank, value) ¹³	81	0.374
GNI per capita (US\$, 2006) ¹	480	
Gini index ¹³	33.4	
Population below the income poverty line 1 \$ a day (%, 1990-2005*) ¹³	41.3	
Population below the national poverty line (%, 1990-2004*) ¹³	49.8	

MDG Performance^{10#}

Early achiever:	Primary enrolment, Gender primary enrolment, Gender secondary enrolment, TB prevalence, TB death rate, Protected area
On-track:	Under 5 mortality, HIV prevalence, Sanitation rural
Slow:	Underweight children, Gender tertiary enrolment, Infant mortality, Water rural
Regressing:	\$1/day poverty, Reaching grade 5, Primary completion, Forest cover, CO ₂ emissions, Ozone-depleting potential CFC- consumption, Water urban, Sanitation urban

Government

Total government expenditure as % of GDP (2005) ⁶	13.7
Education as % of total government expenditure (1995-2005*) ¹	17
Health as % of total government expenditure (1995-2005*) ¹	7
Defence as % of total government expenditure (1995-2005*) ¹	10

Economy

LDC status ¹⁰	Yes	
WTO membership ¹⁷	1-Jan-95	
Average annual growth rate of total real product (2004-05) ¹⁵	5.5	
Average annual growth rate of per capita real product (2004-05) ¹⁵	3.6	
EVI (2004) ¹²	25.8	
Total debt service as % of GDP (1990, 2005) ¹³	2.5	1.3
Total debt service as % of exports of goods, service & net income from abroad (1990, 2005) ¹³	25.8	5.3
Balance of payments: current account balance (US\$ millions, 2005) ⁶	-557	
Workers' remittances receipts, total amount (US\$ millions, 2005) ²⁰	4,252	
Workers' remittances receipts, as percentage of exports of goods & services (2005) ²⁰	40.8	
ODA received (net disbursements), total amount (US\$ millions, 2005) ¹³	1,320.5	
ODA received (net disbursements) per capita (US\$, 2005) ¹³	9.3	
High-technology exports as % of manufactured exports (1990, 2005) ¹³	0.1	(-)

Health & Nutrition

Infant mortality rate (per 1,000 live births, 1990, 2006) ¹	100	52	
Under 5 mortality rate (per 1,000 live births, 1990, 2006) ¹	149	69	
Maternal mortality ratio (per 100,000 live births, adjusted, 2005) ¹	570		
Skilled attendance at delivery (%, 2000-2006*) ¹	20		
Population using improved drinking water sources (% - total, urban, rural, 2004) ¹	74	82	72
Population using adequate sanitation facilities (% - total, urban, rural, 2004) ¹	39	51	35
Children under 1 immunized against BCG, DPT 3, Polio 3, Measles (%, 2006) ¹	96	88	81
Adult HIV/AIDS prevalence rate (15-49 years, %, end 2006) ¹	<0.1		
Total fertility rate* (2006) ¹	2.9		

BANGLADESH

Underweight moderate and severe (under 5 children, %, 2000-2006*) ¹	48
Vitamin A supplementation coverage rate (6-59 months, % - at least one dose, 2005) ¹	83
Households consuming iodized salt (%, 2000-2006*) ¹	84

Education

Primary school net enrolment ratio (% - male, female, 2000-2006*) ¹		93	96
Primary completion rate as % of relevant age group (total, 2005) ¹⁶	76.4		
Females as % of males, primary school enrolment (enrolled, attending, 2000-2006*) ¹	103	106	
Females as % of males, secondary school enrolment (enrolled, attending, 2000- 2006*) ¹	102	114	
Adult literacy rate (% - total) ¹	48		
Youth (15-24 years) literacy rate (% , male, female, 2000-2006*) ¹		67	60
Primary school entrants reaching grade 5 (%, admin data, 2000-2006*) ¹	65		

Child Protection & Emergency Situation

Juvenile justice and children in conflict with the law

Birth registration (% - total, urban, rural, 1999-2006*) ¹	10	13	9
Minimum age for criminal responsibility ²⁶	9 years		

Child labor

Minimum age for work [†]	n.a.		
5-14 years old children who are working (% - total, male, female, 1999-2006*) ¹	13	18	8

Early marriage

Legal age of marriage- Male [‡]	21 years		
Legal age of marriage- Female [‡]	18 years		
Girls married before the age of 18 years (% - total, urban, rural, 1987-2006*) ¹	64	58	69
Children killed during armed conflict (2007) ²⁷			n.a.
Children recruited by armed groups (2007) ²⁷			n.a.
Persons recognized as refugees (2006) ⁺⁺²⁷			26,311
Internally displaced persons protected by UNHCR (2006) ⁺⁺⁺²⁸			n.a.

International and regional conventions

Convention on the Rights of the Child (CRC, 1989) ⁸	2-Sep-90 r
Optional Protocol to the CRC on the Involvement of Children in Armed Conflict (CRC-OP-AC, 2000) ⁸	12-Feb-02 r
Optional Protocol to the CRC on the Sale of Children, Child Prostitution and Child Pornography (CRC-OP-SC, 2000) ⁸	6-Oct-00 r
Convention on the Elimination of All Forms of Discrimination against Women (CEDAW, 1979) ⁸	6-Dec-84 a
Optional Protocol to CEDAW (CEDAW-OP, 1999) ⁸	6-Dec-84 a
Convention on the Elimination of All Forms of racial Discrimination (CERD, 1965) ⁸	11-Jul-79 a
Covenant on Civil and Political Rights (CCPR, 1966) ⁸	6-Dec-00 a
Covenant on Economic, Social and Cultural Rights (CESCR, 1966) ⁸	5-Jan-99 a
Forced Labour Convention No. 29 (1930) ⁵	22-Jun-72 r
Abolition of Forced Labour Convention 105 (1957) ⁵	22-Jun-72 r
Convention against Discrimination in Education (1960) ⁹	n.r./n.s.
Convention on Technical and Vocational Education (1989) ⁹	n.r./n.s.
Convention No. 138 on Minimum Age (1973) ⁵	n.r.
Convention No. 182 on Worst Forms of Child Labour (1999) ⁵	12-Mar-01 r
Convention on Consent to Marriage, Minimum Age for Marriage and Registration of Marriages (1962) ²¹	5-Oct-98 a
Rome Statute of the International Criminal Court (1998) ²²	16-Sep-99 s
Convention No. 87 on Freedom of Association and Protection of the Right to Organize (1948) ⁵	22-Jun-72 r
Convention No. 98 on the Right to Organize and Collective Bargaining (1949) ⁵	22-Jun-72 r
Convention on Protection of Children and Cooperation in respect of Inter-country Adoption (1993) ⁴	n.s.
Convention on the Protection of the Rights of All Migrant Workers and Members of their Families (1990) ⁸	7-Oct-98 s
Mine Ban Treaty (1997) ³	6-Sep-00 r
Geneva Convention (IV) relative to the Protection of Civilian Persons in Time of War (1949) ⁷	4-Apr-72 s
Protocol I to the Geneva Conventions relating to the Protection of Victims of International Armed Conflicts (1977) ⁷	8-Aug-80 a
Protocol II to the Geneva Conventions relating to the Protection of Victims of Non-International Armed Conflicts (1977) ²³	8-Sep-80 a
Protocol to Prevent, Suppress and Punish Trafficking in Persons, especially Women and Children supplementing the United Nations Convention against Transnational Organised Crime (2000) ²	n.s.
SAARC Convention on Preventing and Combating Trafficking in Women and Children for Prostitution (2002) ¹⁸	10-Jun-02 r
SAARC Convention on Regional Arrangements for the Promotion of Child Welfare in South Asia (2002) ¹⁹	5-Jan-02 r

Notes:

† Minimum Age for Work: Employment of Children Act 1938 prohibit children below 12 years from working in the places with hazardous conditions and minimum wages at 1961

‡ Legal age of marriage: Child Marriage Restraint Act 1929 but religious laws permit earlier marriages

BHUTAN

Population

Total population (thousands, 2005) ²⁹	635	
Population aged under 18 (thousands, %, 2005) ²⁹	272	43
Population aged under 5 (thousands, %, 2005) ²⁹	63	10
Population annual growth rate (%, 1990-2005) ²⁹		1.3

Poverty/Inequality

HDI (rank, value, 2005) ¹³	135 of 177	0.579
HPI-1 (rank, value) ¹³	86	38.9
GDI (rank, value) ¹³	n.a.	n.a.
GEM (rank, value) ¹³	n.a.	n.a.
GDP per capita (US\$, 2005) ³⁰	1,272	
Gini index ¹³	n.a.	
Population below the income poverty line 1 \$ a day (%, 1990-2005*) ¹³	n.a.	
Population below the national poverty line (%, 1990-2004*) ¹³	n.a.	

MDG Performance^{10#}

Early achiever:	TB prevalence, TB death rate, Forest cover, Protected area
On-track:	Under 5 mortality, HIV prevalence
Slow:	Infant mortality
Regressing:	CO ₂ emissions, Ozone-depleting potential CFC ⁻ consumption

Government

Total government expenditure as % of GDP (2005) ⁶	48.5
Education as % of total government expenditure (1995-2005*) ¹	13
Health as % of total government expenditure (1995-2005*) ¹	9
Defence as % of total government expenditure (1995-2005*) ¹	n.a.

Economy

LDC status ¹⁰	Yes	
WTO membership ¹⁷	Observer status	
Average annual growth rate of total real product (2004-05) ¹⁵	8.8	
Average annual growth rate of per capita real product (2004-05) ¹	6.4	
EVI (2004) ¹²	46.6	
Total debt service as % of GDP (1990, 2005) ¹³	1.7	0.8
Total debt service as % of exports of goods, service & net income from abroad (1990, 2005) ¹³	n.a.	n.a.
Balance of payments: current account balance (US\$ millions, 2005) ⁶	-211	
Workers' remittances receipts, total amount (US\$ millions, 2005) ²⁰	n.a.	
Workers' remittances receipts, as percentage of exports of goods & services (2005) ²⁰	n.a.	
ODA received (net disbursements), total amount (US\$ millions, 2005) ¹³	90.0	
ODA received (net disbursements) per capita (US\$, 2005) ¹³	98.1	
High-technology exports as % of manufactured exports (1990, 2005) ¹³	n.a.	n.a.

Health & Nutrition

Infant mortality rate (per 1,000 live births, 1990, 2006) ¹	107	63		
Under 5 mortality rate (per 1,000 live births, 1990, 2006) ¹	166	70		
Maternal mortality ratio (per 100,000 live births, adjusted, 2005) ¹	440			
Skilled attendance at delivery (%, 2000-2006*) ¹	56			
Population using improved drinking water sources (% - total, urban, rural, 2004) ¹	62	86	60	
Population using adequate sanitation facilities (% - total, urban, rural, 2004) ¹	70	65	70	
Children under 1 immunized against BCG, DPT 3, Polio 3, Measles (%, 2006) ¹	92	95	96	90

Adult HIV/AIDS prevalence rate (15-49 years, %, end 2006) ¹	<0.1
Total fertility rate ^c (2006) ¹	2.3
Underweight moderate and severe (under 5 children, %, 2000-2006*) ¹	19x
Vitamin A supplementation coverage rate (6-59 months, % - at least one dose, 2005) ¹	n.a.
Households consuming iodized salt (% , 2000-2006*) ¹	96

Education

Primary school net enrolment ratio (% - male, female, 2000-2006*) ¹		80	79
Primary completion rate as % of relevant age group (total, 2005) ¹⁶	n.a.		
Females as % of males, primary school enrolment (enrolled, attending, 2000-2006*) ¹	99		
Females as % of males, secondary school enrolment (enrolled, attending, 2000-2006*) ¹	n.a.	n.a.	
Adult literacy rate (% - total) ¹	n.a.		
Youth (15-24 years) literacy rate (% , male, female, 2000-2006*) ¹		n.a.	n.a.
Primary school entrants reaching grade 5 (% , admin data, 2000-2006*) ¹	93		

Child Protection & Emergency Situation

Juvenile justice and children in conflict with the law

Birth registration (% - total, urban, rural, 1999-2006*) ¹	n.a.	n.a.	n.a.
Minimum age for criminal responsibility ²⁶	10 years		

Child labor

Minimum age for work [†]	n.a.		
5-14 years old children who are working (% - total, male, female, 1999-2006*) ¹	19 ^y	16 ^y	22 ^y

Early marriage

Legal age of marriage- Male [†]	18 years		
Legal age of marriage- Female [†]	18 years		
Girls married before the age of 18 years (% - total, urban, rural, 1987-2006*) ¹	n.a.	n.a.	n.a.
Children killed during armed conflict (2007) ²⁷			n.a.
Children recruited by armed groups (2007) ²⁷			n.a.
Persons recognized as refugees (2006) ⁺⁺²⁷			n.a.
Internally displaced persons protected by UNHCR (2006) ⁺⁺⁺²⁸			n.a.

International and regional conventions

Convention on the Rights of the Child (CRC, 1989) ⁸	2-Sep-90 r
Optional Protocol to the CRC on the Involvement of Children in Armed Conflict (CRC-OP-AC, 2000) ⁸	15-Sep-05 s
Optional Protocol to the CRC on the Sale of Children, Child Prostitution and Child Pornography (CRC-OP-SC, 2000) ⁸	15-Sep-05 s
Convention on the Elimination of All Forms of Discrimination against Women (CEDAW, 1979) ⁸	30-Sep-81 r
Optional Protocol to CEDAW (CEDAW-OP, 1999) ⁸	n.r.
Convention on the Elimination of All Forms of racial Discrimination (CERD, 1965) ⁸	26-Mar-73 s
Covenant on Civil and Political Rights (CCPR, 1966) ⁸	n.r.
Covenant on Economic, Social and Cultural Rights (CESCR, 1966) ⁸	n.r.
Forced Labour Convention No. 29 (1930) ⁵	n.r.
Abolition of Forced Labour Convention No. 105 (1957) ⁵	n.r.
Convention against Discrimination in Education (1960) ⁹	n.r./n.s.
Convention on Technical and Vocational Education (1989) ⁹	n.r./n.s.
Convention No. 138 on Minimum Age (1973) ⁵	n.r.
Convention No. 182 on Worst Forms of Child Labour (1999) ⁵	n.r.
Convention on Consent to Marriage, Minimum Age for Marriage and Registration of Marriages (1962) ²¹	n.r./n.s.
Rome Statute of the International Criminal Court (1998) ²²	n.r./n.s.
Convention No. 87 on Freedom of Association and Protection of the Right to Organize (1948) ⁵	n.r.
Convention No. 98 on the Right to Organize and Collective Bargaining (1949) ⁵	n.r.
Convention on Protection of Children and Cooperation in respect of Inter-country Adoption (1993) ⁴	n.s.
Convention on the Protection of the Rights of All Migrant Workers and Members of their Families (1990) ⁸	n.r./n.s.
Mine Ban Treaty (1997) ³	18-Aug-05 a
Geneva Convention (IV) relative to the Protection of Civilian Persons in Time of War (1949) ⁷	10-Jan-91 a
Protocol I to the Geneva Conventions relating to the Protection of Victims of International Armed Conflicts (1977) ⁷	n.r.
Protocol II to the Geneva Conventions relating to the Protection of Victims of Non-International Armed Conflicts (1977) ²³	n.r./n.s.
Protocol to Prevent, Suppress and Punish Trafficking in Persons, especially Women and Children supplementing the United Nations Convention against Transnational Organised Crime (2000) ²	n.s.
SAARC Convention on Preventing and Combating Trafficking in Women and Children for Prostitution (2002) ¹⁸	4-Sep-03 r
SAARC Convention on Regional Arrangements for the Promotion of Child Welfare in South Asia (2002) ¹⁹	5-Jan-02 r

Notes:

† Legal age of marriage: Marriage Act 1980 (amended in 1996)

INDIA

Population

Total population (thousands, 2006) ¹	1,151,751	
Population aged under 18 (thousands, %, 2006) ¹	445,361	39
Population aged under 5 (thousands, %, 2006) ¹	126,843	11
Population annual growth rate (%, 1990-2006) ¹		1.8

Poverty/Inequality

HDI (rank, value, 2005) ¹³	128 of 177	0.619
HPI-1 (rank, value) ¹³	62	31.3
GDI (rank, value) ¹³	113	0.6
GEM (rank, value) ¹³	n.a.	n.a.
GNI per capita (US\$, 2006) ¹	820	
Gini index ¹³	36.8	
Population below the income poverty line 1 \$ a day (%, 1990-2005*) ¹³	34.3	
Population below the national poverty line (%, 1990-2004*) ¹³	28.6	

MDG Performance^{10#}

Early achiever:	Primary enrolment, HIV prevalence, TB prevalence, TB death rate, Forest cover, Protected area, Water urban, Water rural
On-track:	Reaching grade 5, Primary completion, Gender primary enrolment, Gender secondary enrolment
Slow:	Poverty \$1, Underweight children, Gender tertiary enrolment, Under 5 mortality, Infant mortality, Sanitation urban, Sanitation rural
Regressing:	CO ₂ emissions, Ozone-depleting potential CFC ⁻ consumption

Government

Total government expenditure as % of GDP (2005) ⁶	28
Education as % of total government expenditure (1995-2005*) ¹	2
Health as % of total government expenditure (1995-2005*) ¹	2
Defence as % of total government expenditure (1995-2005*) ¹	13

Economy

LDC status ¹⁰	No	
WTO membership ¹⁷	1-Jan-95	
Average annual growth rate of total real product (2004-05) ¹⁵	8.7	
Average annual growth rate of per capita real product (2004-05) ¹⁵	7.0	
EVI (2004) ¹²	19.1	
Total debt service as % of GDP (1990, 2005) ¹³	2.6	3
Total debt service as % of exports of goods, service & net income from abroad (1990, 2005) ⁹ ¹³	31.9	19.1
Balance of payments: current account balance (US\$ millions, 2005) ⁶	-9,186	
Workers' remittances receipts, total amount (US\$ millions, 2005) ²⁰	23,499 e	
Workers' remittances receipts, as percentage of exports of goods & services (2005) ²⁰	n.a.	
ODA received (net disbursements), total amount (US\$ millions, 2005) ¹³	1,724.1	
ODA received (net disbursements) per capita (US\$, 2005) ¹³	1.6	
High-technology exports as % of manufactured exports (1990, 2005) ¹³	2.4	4.9

Health & Nutrition

Infant mortality rate (per 1,000 live births, 1990, 2006) ¹	82	57		
Under 5 mortality rate (per 1,000 live births, 1990, 2006) ¹	115	76		
Maternal mortality ratio (per 100,000 live births, adjusted, 2005) ¹	450			
Skilled attendance at delivery (%, 2000-2006*) ¹	47			
Population using improved drinking water sources (% - total, urban, rural, 2004) ¹	86	95	83	
Population using adequate sanitation facilities (% - total, urban, rural, 2004) ¹	33	59	22	
Children under 1 immunized against BCG, DPT 3, Polio 3, Measles (%, 2006) ¹	78	55	58	59

Adult HIV/AIDS prevalence rate (15-49 years, %, end 2006) ²⁴	0.36
Total fertility rate ^c (2006) ¹	2.9
Underweight moderate and severe (under 5 children, %, 2000-2006*) ¹	43
Vitamin A supplementation coverage rate (6-59 months, % - at least one dose 2005) ¹	64
Households consuming iodized salt (%, 2000-2006*) ¹	51

Education

Primary school net enrolment ratio (% - male, female, 2000-2006*) ¹		92	86
Primary completion rate as % of relevant age group (total, 2005) ¹⁶	89.8		
Females as % of males, primary school enrolment (enrolled, attending, 2000-2006*) ¹	93	101	
Females as % of males, secondary school enrolment (enrolled, attending, 2000-2005*) ¹	n.a.	91	
Adult literacy rate (% - total, male, female, 2000-2004*) ²⁴	61	73	48
Youth (15-24 years) literacy rate (% - male, female, 2000-2006*) ¹		84	68
Primary school entrants reaching grade 5 (% - admin data, 2000-2006*) ¹	73		

Child Protection & Emergency Situation

Juvenile justice and children in conflict with the law

Birth registration (% - total, urban, rural, 1999-2006*) ¹	41	59	35
Minimum age for criminal responsibility ²⁶	7 years		

Child labor

Minimum age for work [†]	14 years in hazardous occupation		
5-14 years old children who are working (% - total, male, female, 1999-2006*) ¹	12	n.a.	n.a.

Early marriage

Legal age of marriage- Male [‡]	21 years		
Legal age of marriage- Female [‡]	18 years		
Girls married before the age of 18 years (% - total, urban, rural, 1987-2006*) ¹	45	28	53

Children killed during armed conflict (2007) ²⁷			n.a.
Children recruited by armed groups (2007) ²⁷			n.a.
Persons recognized as refugees (2006) ⁺⁺²⁷			158,366
Internally displaced persons protected by UNHCR (2006) ⁺⁺⁺²⁸			n.a.

International and regional conventions

Convention on the Rights of the Child (CRC, 1989) ⁸	11-Jan-93 a
Optional Protocol to the CRC on the Involvement of Children in Armed Conflict (CRC-OP-AC, 2000) ⁸	30-Dec-05 r
Optional Protocol to the CRC on the Sale of Children, Child Prostitution and Child Pornography (CRC-OP-SC, 2000) ⁸	16-Sep-05 r
Convention on the Elimination of All Forms of Discrimination against Women (CEDAW, 1979) ⁸	8-Aug-93 r
Optional Protocol to CEDAW (CEDAW-OP, 1999) ⁸	n.r.
Convention on the Elimination of All Forms of racial Discrimination (CERD, 1965) ⁸	4-Jan-69 r
Covenant on Civil and Political Rights (CCPR, 1966) ⁸	10-Jul-79 a
Covenant on Economic, Social and Cultural Rights (CESCR, 1966) ⁸	10-Jul-79 a
Forced Labour Convention No. 29 (1930) ⁵	30-Nov-54 r
Abolition of Forced Labour Convention No. 105 (1957) ⁵	18-May-00 r
Convention against Discrimination in Education (1960) ⁹	n.r./n.s.
Convention on Technical and Vocational Education (1989) ⁹	n.r./n.s.
Convention No. 138 on Minimum Age (1973) ⁵	n.r.
Convention No. 182 on Worst Forms of Child Labour (1999) ⁵	n.r.
Convention on Consent to Marriage, Minimum Age for Marriage and Registration of Marriages (1962) ²¹	n.r./n.s.
Rome Statute of the International Criminal Court (1998) ²²	n.r./n.s.
Convention No. 87 on Freedom of Association and Protection of the Right to Organize (1948) ⁵	n.r.
Convention No. 98 on the Right to Organize and Collective Bargaining (1949) ⁵	n.r.
Convention on Protection of Children and Cooperation in respect of Inter-country Adoption (1993) ⁴	6-Jun-03 r
Convention on the Protection of the Rights of All Migrant Workers and Members of their Families (1990) ⁸	n.r./n.s.
Mine Ban Treaty (1997) ³	n.r.
Geneva Convention (IV) relative to the Protection of Civilian Persons in Time of War (1949) ⁷	9-Nov-50
Protocol I to the Geneva Conventions relating to the Protection of Victims of International Armed Conflicts (1977) ⁷	n.r.
Protocol II to the Geneva Conventions relating to the Protection of Victims of Non-International Armed Conflicts (1977) ²³	n.r./n.s.
Protocol to Prevent, Suppress and Punish Trafficking in Persons, especially Women and Children supplementing the United Nations Convention against Transnational Organised Crime (2000) ²	12-Dec-02 s
SAARC Convention on Preventing and Combating Trafficking in Women and Children for Prostitution (2002) ¹⁸	2-Sep-03 r
SAARC Convention on Regional Arrangements for the Promotion of Child Welfare in South Asia (2002) ¹⁹	5-Jan-02 r

Notes:

[†] Minimum Age for Work: Child Labour (Prohibition and Regulation Act 1986)

[‡] Legal age of marriage: Child Marriage Restraint Act 1929

[^] Value includes workers' remittances and compensation of employees

MALDIVES

Population

Total population (thousands, 2006) ³¹	299	
Population aged under 18 (thousands, %, 2006) ³¹	117	39
Population aged under 5 (thousands, %, 2005) ³²	32	11
Population annual growth rate (%, 2006) ³¹		1.7

Poverty/Inequality

HDI (rank, value, 2005) ¹³	100 of 177	0.741
HPI-1 (rank, value) ¹³	42	17
GDI (rank, value) ¹³	85	0.744
GEM (rank, value) ¹³	76	0.437
GDP per capita (US\$, 2006) ³¹	2,674	
Gini index ¹³	n.a.	
Population below the income poverty line 1 \$ a day (%, 1990-2005*) ¹³	n.a.	
Population below the national poverty line (%, 1990-2004*) ¹³	n.a.	

MDG Performance^{10#}

Early achiever:	Primary completion rate, Gender primary enrolment, Gender secondary enrolment, TB prevalence, TB death rate, Ozone-depleting potential CFC- consumption, Water urban, Sanitation urban
On-track:	Underweight children, Under 5 mortality, Infant mortality, Forest cover
Slow:	
Regressing:	Primary enrolment, CO ₂ emissions, Water rural

Government

Total government expenditure as % of GDP (2005) ⁶	59.7
Education as % of total government expenditure (1995-2005*) ¹	14
Health as % of total government expenditure (1995-2005*) ¹	9
Defence as % of total government expenditure (1995-2005*) ¹	10

Economy

LDC status ¹⁰	Yes, to graduate in 2011	
WTO membership ¹⁷	31-May-95	
Average annual growth rate of total real product (2004-05) ¹⁵	-0.2	
Average annual growth rate of per capita real product (2004-05) ¹⁵	-1.8	
EVI (2004) ¹²	50.5	
Total debt service as % of GDP (1990, 2005) ¹³	4.1	4.4
Total debt service as % of exports of goods, service & net income from abroad (1990, 2005) ¹³	4.8	6.9
Balance of payments: current account balance (US\$ millions, 2005) ⁶	-269	
Workers' remittances receipts, total amount (US\$ millions, 2005) ²⁰	3	
Workers' remittances receipts, as percentage of exports of goods & services (2005) ²⁰	n.a.	
ODA received (net disbursements), total amount (US\$ millions, 2005) ¹³	66.8	
ODA received (net disbursements) per capita (US\$, 2005) ¹³	203.0	
High-technology exports as % of manufactured exports (1990, 2005) ¹³	n.a.	2.1

Health & Nutrition

Infant mortality rate (per 1,000 live births, 1990, 2006) ¹	78	26	
Under 5 mortality rate (per 1,000 live births, 1990, 2006) ¹	111	30	
Maternal mortality ratio (per 100,000 live births, adjusted, 2005) ¹	120		
Skilled attendance at delivery (%, 2000-2006*) ¹	84		
Population using improved drinking water sources (% - total, urban, rural, 2004) ¹	83	98	76
Population using adequate sanitation facilities (% - total, urban, rural, 2004) ¹	59	100	42
Children under 1 immunized against BCG, DPT 3, Polio 3, Measles (%, 2006) ¹	99	98	98

Adult HIV/AIDS prevalence rate (15-49 years, %, end 2006) ¹	n.a.
Total fertility rate ² (2006) ¹	2.6
Underweight moderate and severe (under 5 children, %, 2000-2006*) ¹	30
Vitamin A supplementation coverage rate (6-59 months, % - at least one dose, 2005) ¹	n.a.
Households consuming iodized salt (%, 2000-2006*) ¹	44

Education

Primary school net enrolment ratio (% - male, female, 2000-2006*) ¹		79	79
Primary completion rate as % of relevant age group (total, 2005) ¹⁶	127.3		
Females as % of males, primary school enrolment (gross, net, 2000-2006*) ¹	100	n.a.	
Females as % of males, secondary school enrolment (gross, net, 2000-2006*) ¹	110	n.a.	
Adult literacy rate (% - total, male, female, 2000-2004*) ¹	96	96	96
Youth (15-24 years) literacy rate (% , male, female, 2000-2006*) ¹		98	98
Primary school entrants reaching grade 5 (%, admin data, 2000-2006*) ¹	92		

Child Protection & Emergency Situation

Juvenile justice and children in conflict with the law

Birth registration (% - total, urban, rural, 1999-2006*) ¹	73	n.a.	n.a.
Minimum age for criminal responsibility ²⁶	7 years		

Child labor

Minimum age for work [†]	14 years (18 yrs in hazardous occup.)		
5-14 years old children who are working (% - total, male, female, 1999-2006*) ¹	n.a.	n.a.	n.a.

Early marriage

Legal age of marriage- Male [‡]	18 years		
Legal age of marriage- Female [‡]	18 years		
Girls married before the age of 18 years (% - total, urban, rural, 1987-2006*) ¹	n.a.	n.a.	n.a.

Children killed during armed conflict (2007)²⁷

n.a.

Children recruited by armed groups (2007)²⁷

n.a.

Persons recognized as refugees (2006)⁺⁺²⁷

n.a.

Internally displaced persons protected by UNHCR (2006)⁺⁺⁺²⁸

n.a.

International and regional conventions

Convention on the Rights of the Child (CRC, 1989) ⁸	13-Mar-91 r
Optional Protocol to the CRC on the Involvement of Children in Armed Conflict (CRC-OP-AC, 2000) ⁸	29-Jan-05 r
Optional Protocol to the CRC on the Sale of Children, Child Prostitution and Child Pornography (CRC-OP-SC, 2000) ⁸	10-Jun-02 r
Convention on the Elimination of All Forms of Discrimination against Women (CEDAW, 1979) ⁸	31-Jul-93 a
Optional Protocol to CEDAW (CEDAW-OP, 1999) ⁸	13-Jun-06 a
Convention on the Elimination of All Forms of racial Discrimination (CERD, 1965) ⁸	24-May-84 a
Covenant on Civil and Political Rights (CCPR, 1966) ⁸	19-Dec-06 a
Covenant on Economic, Social and Cultural Rights (CESCR, 1966) ⁸	19-Dec-06 a
Forced Labour Convention No. 29 (1930) ⁵	n.r.
Abolition of Forced Labour Convention No. 105 (1957) ⁵	n.r.
Convention against Discrimination in Education (1960) ⁹	n.r./n.s.
Convention on Technical and Vocational Education (1989) ⁹	n.r./n.s.
Convention No. 138 on Minimum Age (1973) ⁵	n.r.
Convention No. 182 on Worst Forms of Child Labour (1999) ⁵	n.r.
Convention on Consent to Marriage, Minimum Age for Marriage and Registration of Marriages (1962) ²¹	n.r./n.s.
Rome Statute of the International Criminal Court (1998) ²²	n.r./n.s.
Convention No. 87 on Freedom of Association and Protection of the Right to Organize (1948) ⁵	n.r.
Convention No. 98 on the Right to Organize and Collective Bargaining (1949) ⁵	n.r.
Convention on Protection of Children and Cooperation in respect of Inter-country Adoption (1993) ⁴	n.s.
Convention on the Protection of the Rights of All Migrant Workers and Members of their Families (1990) ⁸	n.r./n.s.
Mine Ban Treaty (1997) ³	7-Sep-00 r
Geneva Convention (IV) relative to the Protection of Civilian Persons in Time of War (1949) ⁷	18-Jun-91 a
Protocol I to the Geneva Conventions relating to the Protection of Victims of International Armed Conflicts (1977) ⁷	3-Sep-91 a
Protocol II to the Geneva Conventions relating to the Protection of Victims of Non-International Armed Conflicts (1977) ²³	3-Sep-91 a
Protocol to Prevent, Suppress and Punish Trafficking in Persons, especially Women and Children supplementing the United Nations Convention against Transnational Organised Crime (2000) ²	n.s.
SAARC Convention on Preventing and Combating Trafficking in Women and Children for Prostitution (2002) ¹⁸	28-Dec-03 r
SAARC Convention on Regional Arrangements for the Promotion of Child Welfare in South Asia (2002) ¹⁹	5-Jan-02 r

Notes:

† Minimum Age for Work: Law on the Protection of the Right of the Child 1991(Chapter III-27)

‡ Legal age of marriage: Law on the Protection of the Right of the Child 1991(Amended, 2000)

NEPAL

Population

Total population (thousands, 2006) ¹	27,641	
Population aged under 18 (thousands, %, 2006) ¹	12,487	45
Population aged under 5 (thousands, %, 2006) ¹	3,626	13
Population annual growth rate (%, 1990-2006) ¹		2.3

Poverty/Development

HDI (rank, value, 2005) ¹³	142 of 177	0.534
HPI-1 (rank, value) ¹³	84	38.1
GDI (rank, value) ¹³	128	0.520
GEM (rank, value) ¹³	86	0.351
GNI per capita (US\$, 2006) ¹	290	
Gini index ¹³	47.2	
Population below the income poverty line 1 \$ a day (%, 1990-2005*) ¹³	24.1	
Population below the national poverty line (%, 1990-2004*) ¹³	30.9	

MDG Performance^{10#}

Early achiever:	Gender primary enrolment, TB prevalence, TB death rate, Protected area, Ozone-depleting potential CFC-consumption, Water urban, Water rural
On-track:	\$ 1/day poverty, Primary enrolment, Reaching grade 5, Gender secondary enrolment, Under 5 mortality, HIV prevalence
Slow:	Primary completion, Gender tertiary enrolment, Infant mortality, Sanitation urban, Sanitation rural
Regressing:	Forest cover, CO ₂ emissions

Government

Total government expenditure as % of GDP (2005) ⁶	16.5
Education as % of total government expenditure (1995-2005*) ¹	18
Health as % of total government expenditure (1995-2005*) ¹	5
Defence as % of total government expenditure (1995-2005*) ¹	11

Economy

LDC status ¹⁰	Yes	
WTO membership ¹⁷	23-Apr-93	
Average annual growth rate of total real product (2004-05) ¹⁵	2.5	
Average annual growth rate of per capita real product (2004-05) ¹⁵	0.5	
EVI (2004) ¹²	37.4	
Total debt service as % of GDP (1990, 2005) ¹³	1.9	1.6
Total debt service as % of exports of goods, service & net income from abroad (1990, 2005) ¹³	15.7	4.6
Balance of payments: current account balance (US\$ millions, 2005) ⁶	160	
Workers' remittances receipts, total amount (US\$ millions, 2005) ²⁰	1,212	
Workers' remittances receipts, as percentage of exports of goods & services (2005) ²⁰	n.a.	
ODA received (net disbursements), total amount (US\$ millions, 2005) ¹³	427.9	
ODA received (net disbursements) per capita (US\$, 2005) ¹³	15.8	
High-technology exports as % of manufactured exports (1990, 2005) ¹³	n.a.	0.1

Health & Nutrition

Infant mortality rate (per 1,000 live births, 1990, 2006) ¹	99	46		
Under 5 mortality rate (per 1,000 live births, 1990, 2006) ¹	142	59		
Maternal mortality ratio (per 100,000 live births, adjusted, 2005) ¹	830			
Skilled attendance at delivery (%, 2000-2006*) ¹	19			
Population using improved drinking water sources (% - total, urban, rural, 2004) ¹	90	96	89	
Population using adequate sanitation facilities (% - total, urban, rural, 2004) ¹	35	62	30	
Children under 1 immunized against BCG, DPT 3, Polio 3, Measles (%, 2006) ¹	93	89	91	85

Adult HIV/AIDS prevalence rate (15-49 years, %, end 2006) ¹	0.5
Total fertility rate ^c (2006) ¹	3.4
Underweight moderate and severe (under 5 children, %, 1996-2006*) ¹	39
Vitamin A supplementation coverage rate (6-59 months, % - at least one dose 2005) ¹	96
Households consuming iodized salt (% , 2000-2006*) ¹	63

Education

Primary school net enrolment ratio (% -male, female, 2000-2006*) ¹		90	83
Primary completion rate as % of relevant age group (total, 2005) ¹⁶	74.7		
Females as % of males, primary school enrolment (gross, net, 2000-2006*) ¹	92	95	
Females as % of males, secondary school enrolment (gross, net, 2000- 2006*) ¹	n.a	83	
Adult literacy rate (% - total, male, female, 2000-2004*) ³⁴	49	63	35
Youth (15-24 years) literacy rate (% , male, female, 2000-2006*) ¹		81	60
Primary school entrants reaching grade 5 (% , admin data, 2000-2006*) ¹	79		

Child Protection & Emergency situation

Juvenile justice and children in conflict with the law

Birth registration (% - total, urban, rural, 1999-2006*) ¹	35	n.a.	n.a.
Minimum age for criminal responsibility ²⁶	10 years		

Child labor

Minimum age for work [†]	14 years (16 years in hazardous occup.)		
5-14 years old children who are working (% - total, male, female, 1999-2006*) ¹	31 ^y	30 ^y	33 ^y

Early marriage

Legal age of marriage- Male [‡]	18 years		
Legal age of marriage- Female [‡]	18 years		
Girls married before the age of 18 years (% - total, urban, rural, 1987-2006*) ¹	56	34	60
Children killed during armed conflict (2007) ²⁷			36
Children recruited by armed groups (2007) ²⁷			512
Persons recognized as refugees (2006) ⁺⁺²⁷			128,175
Internally displaced persons protected by UNHCR (2006) ⁺⁺⁺²⁸			100,000

International, Regional Treaties and Conventions

Convention on the Rights of the Child (CRC, 1989) ⁸	14-Oct-90 r
Optional Protocol to the CRC on the Involvement of Children in Armed Conflict (CRC-OP-AC, 2000) ⁸	8-Sep-00 s
Optional Protocol to the CRC on the Sale of Children, Child Prostitution and Child Pornography (CRC-OP-SC, 2000) ⁸	20-Feb-06 r
Convention on the Elimination of All Forms of Discrimination against Women (CEDAW, 1979) ⁸	22-May-91 r
Optional Protocol to CEDAW (CEDAW-OP, 1999) ⁸	18-Dec-01 s
Convention on the Elimination of All Forms of racial Discrimination (CERD, 1965) ⁸	1-May-71 a
Covenant on Civil and Political Rights (CCPR, 1966) ⁸	14-Aug-91 a
Covenant on Economic, Social and Cultural Rights (CESCR, 1966) ⁸	14-Aug-91 a
Forced Labour Convention No. 29 (1930) ⁵	3-Jan-02 r
Abolition of Forced Labour Convention No. 105 (1957) ⁵	n.r.
Convention against Discrimination in Education (1960) ⁹	n.r./n.s.
Convention on Technical and Vocational Education (1989) ⁹	n.r./n.s.
Convention No. 138 on Minimum Age (1973) ⁵	30-May-97 r
Convention No. 182 on Worst Forms of Child Labour (1999) ⁵	3-Jan-02 r
Convention on Consent to Marriage, Minimum Age for Marriage and Registration of Marriages (1962) ²¹	n.r./n.s.
Rome Statute of the International Criminal Court (1998) ²²	n.r./n.s.
Convention No. 87 on Freedom of Association and Protection of the Right to Organize (1948) ⁵	n.r.
Convention No. 98 on the Right to Organize and Collective Bargaining (1949) ⁵	11-Nov-96 r
Convention on Protection of Children and Cooperation in respect of Inter-country Adoption (1993) ⁴	n.s.
Convention on the Protection of the Rights of All Migrant Workers and Members of their Families (1990) ⁸	n.r./n.s.
Mine Ban Treaty (1997) ³	n.r.
Geneva Convention (IV) relative to the Protection of Civilian Persons in Time of War (1949) ⁷	7-Feb-64 a
Protocol I to the Geneva Conventions relating to the Protection of Victims of International Armed Conflicts (1977) ⁷	n.r.
Protocol II to the Geneva Conventions relating to the Protection of Victims of Non-International Armed Conflicts (1977) ²³	n.r./n.s.
Protocol to Prevent, Suppress and Punish Trafficking in Persons, especially Women and Children supplementing the United Nations Convention against Transnational Organised Crime (2000) ²	n.r.
SAARC Convention on Preventing and Combating Trafficking in Women and Children for Prostitution (2002) ¹⁸	31-Oct-05 r
SAARC Convention on Regional Arrangements for the Promotion of Child Welfare in South Asia (2002) ¹⁹	5-Jan-02 r

Notes:

† Minimum age for work: Labour Act 1999

‡ Legal age of marriage: 11th Amendment of Civil Code on Legal Age for Marriage

PAKISTAN

Population

Total population (thousands, 2006) ¹	160,943	
Population aged under 18 (thousands, %, 2006) ¹	70,673	44
Population aged under 5 (thousands, %, 2006) ¹	19,012	12
Population annual growth rate (%, 1990-2006) ¹		2.2

Poverty/Inequality

HDI (rank, value, 2005) ¹³	136 of 177	0.551
HPI-1 (rank, value) ¹³	77	36.2
GDI (rank, value) ¹³	125	0.525
GEM (rank, value) ¹³	82	0.377
GNI per capita (US\$, 2006) ¹	770	
Gini index ¹³	30.6	
Population below the income poverty line 1 \$ a day (%, 1990-2005*) ¹³	17	
Population below the national poverty line (%, 1990-2004*) ¹³	32.6	

MDG Performance^{10#}

Early achiever:	TB prevalence, TB death rate, Protected area, Ozone-depleting potential CFC- consumption Water urban, Water rural, Sanitation urban
On-track:	Gender tertiary enrolment, HIV prevalence, Sanitation rural
Slow:	Underweight children, Primary enrolment, Gender primary enrolment, Gender secondary enrolment, Under 5 mortality, Infant mortality
Regressing:	\$1/day poverty, Forest cover, CO ₂ emissions

Government

Total government expenditure as % of GDP (2005) ⁶	17
Education as % of total government expenditure (1995-2005*) ¹	1
Health as % of total government expenditure (1995-2005*) ¹	1
Defence as % of total government expenditure (1995-2005*) ¹	20

Economy

LDC status ¹⁰	No	
WTO membership ¹⁷	1-Jan-95	
Average annual growth rate of total real product (2004-05) ¹⁵	7.8	
Average annual growth rate of per capita real product (2004-05) ¹⁵	5.9	
EVI (2004) ¹²	25.7	
Total debt service as % of GDP (1990, 2005) ¹³	4.8	2.2
Total debt service as % of exports of goods, service & net income from abroad (1990, 2005) ¹³	21.3	10.2
Balance of payments: current account balance (US\$ millions, 2005) ⁶	-1534	
Workers' remittances receipts, total amount (US\$ millions, 2005) ²⁰	4,280	
Workers' remittances receipts, as percentage of exports of goods & services (2005) ²⁰	22.5	
ODA received (net disbursements), total amount (US\$ millions, 2005) ¹³	1,666.5	
ODA received (net disbursements) per capita (US\$, 2005) ¹³	10.7	
High-technology exports as % of manufactured exports (1990, 2005) ¹³	0.4	1.6

Health & Nutrition

Infant mortality rate (per 1,000 live births, 1990, 2006) ¹	100	78	
Under 5 mortality rate (per 1,000 live births, 1990, 2006) ¹	130	97	
Maternal mortality ratio (per 100,000 live births, adjusted, 2005) ¹	320		
Skilled attendance at delivery (%, 2000-2006*) ¹	31		
Population using improved drinking water sources (% - total, urban, rural, 2004) ¹	91	96	89
Population using adequate sanitation facilities (% - total, urban, rural, 2004) ¹	59	92	41
Children under 1 immunized against BCG, DPT 3, Polio 3, Measles (%, 2006) ¹	89	83	80

Adult HIV/AIDS prevalence rate (15-49 years, %, 2006) ¹	0.1
Total fertility rate ^c (2006) ¹	3.6
Underweight moderate and severe (under 5 children, %, 2000-2006*) ¹	38
Vitamin A supplementation coverage rate (6-59 months, % - at least one dose 2005) ¹	95
Households consuming iodized salt (%, 2000-2006*) ¹	17

Education

Primary school net enrolment ratio (% - male, female, 2000-2006*) ¹		77	59
Primary completion rate as % of relevant age group (total, 2005) ¹⁶	63.2		
Females as % of males, primary school enrolment (gross, net, 2000-2006*) ¹	77	82	
Females as % of males, secondary school enrolment (gross, net, 2000-2006*) ¹	75	78	
Adult literacy rate (% - total, male, female, 2000-2004*) ¹	50	63	36
Youth (15-24 years) literacy rate (% , male, female, 2000-2006*) ¹		77	53
Primary school entrants reaching grade 5 (% , admin data, 2000-2006*) ¹	70		

Child Protection & Emergency Situation

Juvenile justice and children in conflict with the law

Birth registration (% - total, urban, rural, 1999-2006*) ¹	n.a.	n.a.	n.a.
Minimum age for criminal responsibility ²⁶	7 years**		

Child labor

Minimum age for work [†]	14 years in hazardous occupation		
5-14 years old children who are working (% - total, male, female, 1999-2006*) ¹	n.a.	n.a.	n.a.

Early marriage

Legal age of marriage- Male [‡]	18 years		
Legal age of marriage- Female [‡]	16 years		
Girls married before the age of 18 years (% - total, urban, rural, 1987-2006*) ¹	32	21	37

Children killed during armed conflict (2007) ²⁷			n.a.
Children recruited by armed groups (2007) ²⁷			n.a.
Persons recognized as refugees (2006) ⁺⁺²⁷			1,044,462
Internally displaced persons protected by UNHCR (2006) ⁺⁺⁺²⁸			n.a.

International, Regional Treaties and Conventions

Convention on the Rights of the Child (CRC, 1989) ⁸	12-Dec-90 r
Optional Protocol to the CRC on the Involvement of Children in Armed Conflict (CRC-OP-AC, 2000) ⁸	26-Sep-01 s
Optional Protocol to the CRC on the Sale of Children, Child Prostitution and Child Pornography (CRC-OP-SC, 2000) ⁸	26-Sep-01 s
Convention on the Elimination of All Forms of Discrimination against Women (CEDAW, 1979) ⁸	11-Apr-96 a
Optional Protocol to CEDAW (CEDAW-OP, 1999) ⁸	n.r./n.s.
Convention on the Elimination of All Forms of racial Discrimination (CERD, 1965) ⁸	4-Jan-69
Covenant on Civil and Political Rights (CCPR, 1966) ⁸	n.r.
Covenant on Economic, Social and Cultural Rights (CESCR, 1966) ⁸	n.r.
Forced Labour Convention No. 29 (1930) ⁵	23-Dec-57 r
Abolition of Forced Labour Convention No. 105 (1957) ⁵	15-Feb-60 r
Convention against Discrimination in Education (1960) ⁹	n.r./n.s.
Convention on Technical and Vocational Education (1989) ⁹	n.r./n.s.
Convention No. 138 on Minimum Age (1973) ⁵	6-Jul-06
Convention No.	11-Oct-01 r
Convention on Consent to Marriage, Minimum Age for Marriage and Registration of Marriages (1962) ²¹	n.r./n.s.
Rome Statute of the International Criminal Court (1998) ²²	n.r./n.s.
Convention No. 87 on Freedom of Association and Protection of the Right to Organize (1948) ⁵	14-Feb-51 r
Convention No. 98 on the Right to Organize and Collective Bargaining (1949) ⁵	26-May-52 r
Convention on Protection of Children and Cooperation in respect of Inter-country Adoption (1993) ⁴	n.s.
Convention on the Protection of the Rights of All Migrant Workers and Members of their Families (1990) ⁸	n.r./n.s.
Mine Ban Treaty (1997) ³	n.r.
Geneva Convention (IV) relative to the Protection of Civilian Persons in Time of War (1949) ⁷	12-Jun-51***r
Protocol I to the Geneva Conventions relating to the Protection of Victims of International Armed Conflicts (1977) ⁷	n.r.
Protocol II to the Geneva Conventions relating to the Protection of Victims of Non-International Armed Conflicts (1977) ²³	n.r./n.s.
Protocol to Prevent, Suppress and Punish Trafficking in Persons, especially Women and Children supplementing the United Nations Convention against Transnational Organised Crime (2000) ²	n.s.
SAARC Convention on Preventing and Combating Trafficking in Women and Children for Prostitution (2002) ¹⁸	16-Nov-02 r
SAARC Convention on Regional Arrangements for the Promotion of Child Welfare in South Asia (2002) ¹⁹	5-Jan-02 r

Notes:

† Minimum Age for Work: Employment of Children Act 1991

‡ Legal age of marriage: Child Marriage Act Restraint 1992

** According to Huddod Ordinance 1997

*** With reservations on Article 44 and Article 68 Para 2 on death penalty

SRI LANKA

Population

Total population (thousands, 2006) ¹	19,207	
Population aged under 18 (thousands, %, 2006) ¹	5,576	29
Population aged under 5 (thousands, %, 2006) ¹	1,483	8
Population annual growth rate (%, 1990-2006) ¹		0.7

Poverty/Inequality

HDI (rank, value, 2005) ¹³	99 of 177	0.743
HPI-1 (rank, value) ¹³	44	17.8
GDI (rank, value) ¹³	89	0.735
GEM (rank, value) ¹³	85	0.369
GNI per capita (US\$, 2006) ¹	1,300	
Gini index ¹³	40.2	
Population below the income poverty line 1 \$ a day (%, 1990-2005*) ¹³	5.6	
Population below the national poverty line (%, 1990-2004*) ¹³	25	

MDG Performance^{10#}

Early achiever:	Gender primary enrolment, Gender secondary enrolment, Under 5 mortality, Infant mortality, TB prevalence, TB death rate, Protected area, Ozone-depleting potential CFC- consumption, Water urban, Sanitation urban, Sanitation rural
On-track:	HIV prevalence, Water rural
Slow:	
Regressing:	\$ 1/day poverty, Forest cover, CO ₂ emissions

Government

Total government expenditure as % of GDP (2005) ⁶	24.7
Education as % of total government expenditure (1995-2005*) ¹	10
Health as % of total government expenditure (1995-2005*) ¹	6
Defence as % of total government expenditure (1995-2005*) ¹	18

Economy

LDC status ¹⁰	No	
WTO membership ¹⁷	1-Jan-95	
Average annual growth rate of total real product (2004-05) ¹⁵	6.2	
Average annual growth rate of per capita real product (2004-05) ¹⁵	5.8	
EVI (2004) ¹²	n.a.	
Total debt service as % of GDP (1990, 2005) ¹³	4.8	1.9
Total debt service as % of exports of goods, service & net income from abroad (1990, 2005) ¹³	13.8	4.5
Balance of payments: current account balance (US\$ millions, 2005) ⁶	-650	
Workers' remittances receipts, total amount (US\$ millions, 2005) ²⁰	1,976	
Workers' remittances receipts, as percentage of exports of goods & services (2005) ²⁰	n.a.	
ODA received (net disbursements), total amount (US\$ millions, 2005) ¹³	1,189.3	
ODA received (net disbursements) per capita (US\$, 2005) ¹³	60.7	
High-technology exports as % of manufactured exports (1990, 2005) ¹³	0.6	1.5

Health

Infant mortality rate (per 1,000 live births, 1990, 2006) ¹	26	11		
Under 5 mortality rate (per 1,000 live births, 1990, 2006) ¹	32	13		
Maternal mortality ratio (per 100,000 live births, adjusted, 2005) ¹	58			
Skilled attendance at delivery (%, 2000-2006*) ¹	96			
Population using improved drinking water sources (% - total, urban, rural, 2004) ¹	79	98	74	
Population using adequate sanitation facilities (% - total, urban, rural, 2004) ¹	91	98	89	
Children under 1 immunized against BCG, DPT 3, Polio 3, Measles (%, 2006) ¹	99	99	98	99

Adult HIV/AIDS prevalence rate (15-49 years, %, 2006) ¹	<0.1
Total fertility rate ² (2006) ¹	1.9
Underweight moderate and severe (under 5 children, %, 2000-2006*) ¹	29
Vitamin A supplementation coverage rate (6-59 months, % - at least one dose, 2005) ¹	64
Households consuming iodized salt: (% , 2000-2006*) ¹	94

Education

Primary school net enrolment ratio (% - male, female, 2000-2006*) ¹		99	98
Primary completion rate as % of relevant age group (total, 2005) ¹⁶	n.a.		
Females as % of males, primary school enrolment (gross, net, 2000-2006*) ¹	99	n.a.	
Females as % of males, secondary school enrolment (gross, net, 2000- 2006*) ¹	n.a.	n.a.	
Adult literacy rate (% - total, male, female, 2000-2004*) ³⁴	91	92	89
Youth (15-24 years) literacy rate (% , male, female, 2000-2006*) ¹		95	96
Primary school entrants reaching grade 5 (% , admin data, 2000-2006*) ¹	100		

Child Protection

Juvenile justice and children in conflict with the law			
Birth registration (% - total, urban, rural, 1999-2006*) ¹	n.a.	n.a.	n.a.
Minimum age for criminal responsibility ²⁶	8 years		
Child labor			
Minimum age for work [†]	14 years		
5-14 years old children who are working (% - total, male, female, 1999-2006*) ¹	8	9	7
Early marriage			
Legal age of marriage- Male [‡]	18 years		
Legal age of marriage- Female [‡]	18 years		
Girls married before the age of 18 years (% - total, urban, rural, 1987-2006*) ¹	12 ^y	n.a.	n.a.
Children killed during armed conflict (2007) ²⁷			n.a.
Children recruited by armed groups (2007) ²⁷			541
Persons recognized as refugees (2006) ⁺⁺²⁷			162
Internally displaced persons protected by UNHCR (2006) ⁺⁺⁺²⁸			469,165

International and regional conventions

Convention on the Rights of the Child (CRC, 1989) ⁸	11-Aug-91 r
Optional Protocol to the CRC on the Involvement of Children in Armed Conflict (CRC-OP-AC, 2000) ⁸	8-Oct-00 r
Optional Protocol to the CRC on the Sale of Children, Child Prostitution and Child Pornography (CRC-OP-SC, 2000) ⁸	8-May-02 s
Convention on the Elimination of All Forms of Discrimination against Women (CEDAW, 1979) ⁸	4-Nov-81 r
Optional Protocol to CEDAW (CEDAW-OP, 1999) ⁸	15-Jan-03 a
Convention on the Elimination of All Forms of racial Discrimination (CERD, 1965) ⁸	20-Mar-82 a
Covenant on Civil and Political Rights (CCPR, 1966) ⁸	11-Sep-80 a
Covenant on Economic, Social and Cultural Rights (CESCR, 1966) ⁸	11-Sep-80 a
Forced Labour Convention No. 29 (1930) ⁵	5-Apr-50 r
Abolition of Forced Labour Convention No. 105 (1957) ⁵	7-Jan-03 r
Convention against Discrimination in Education (1960) ⁹	11-Aug-83 acp
Convention on Technical and Vocational Education (1989) ⁹	n.r./n.s.
Convention No. 138 on Minimum Age (1973) ⁵	11-Feb-00 r
Convention No. 182 on Worst Forms of Child Labour (1999) ⁵	1-Mar-01 r
Convention on Consent to Marriage, Minimum Age for Marriage and Registration of Marriages (1962) ²¹	12-Dec-62 s
Rome Statute of the International Criminal Court (1998) ²²	n.r./n.s.
Convention No. 87 on Freedom of Association and Protection of the Right to Organize (1948) ⁵	15-Sep-95 r
Convention No. 98 on the Right to Organize and Collective Bargaining (1949) ⁵	13-Dec-72 r
Convention on Protection of Children and Cooperation in respect of Inter-country Adoption (1993) ⁴	23-Jan-95 r
Convention on the Protection of the Rights of All Migrant Workers and Members of their Families (1990) ⁸	1-Jul-03 a
Mine Ban Treaty (1997) ³	n.r.
Geneva Convention (IV) relative to the Protection of Civilian Persons in Time of War (1949) ⁷	28-Feb-59
Protocol I to the Geneva Conventions relating to the Protection of Victims of International Armed Conflicts (1977) ⁷	n.r.
Protocol II to the Geneva Conventions relating to the Protection of Victims of Non-International Armed Conflicts (1977) ²³	n.r./n.s.
Protocol to Prevent, Suppress and Punish Trafficking in Persons, especially Women and Children supplementing the United Nations Convention against Transnational Organised Crime (2000) ²	13-Dec-00 s
SAARC Convention on Preventing and Combating Trafficking in Women and Children for Prostitution (2002) ¹⁸	31-Dec-04
SAARC Convention on Regional Arrangements for the Promotion of Child Welfare in South Asia (2002) ¹⁹	5-Jan-02 r

Notes:

† Minimum Age for Work: Employment of Women, Young persons and Children Act No. 47 of 1956

‡ Legal age of marriage: Marriage Registration (Amendment) Act No. 18 of 1995

SOUTH ASIA

Population

Total population (thousands, 2006) ¹	1,542,571	
Total population (thousands, 2005)(UNICEF ROSA adjusted estimate)	1,481,801	
Population aged under 18 (thousands, %, 2006) ¹	612,647	40
Population aged under 18 (thousands, 2005)(UNICEF ROSA adjusted estimate)	586,567	
Population aged under 5 (thousands, %, 2006) ¹	174,830	11
Population aged under 5 (thousands, 2005)(UNICEF ROSA adjusted estimate)	169,421	
Population annual growth rate (%, 1990-2006) ¹		1.9

Poverty/Development

GNI per capita (US\$, 2006) ¹	777
GDP per capita (2006) ³³	766
Population below the income poverty line 1 \$ a day (%, 1995-2005*) ¹	32

Economy

LDC status ¹¹	5 countries
WTO membership ¹⁷	6 member states, Afghanistan and Bhutan are observer governments
Workers' remittances receipts, total amount (US\$ millions, 2005) ²⁰	35222 k
ODA received (net disbursements), total amount (US\$ millions, 2004) ¹³	9937.5 T

Government

Education as % of total government expenditure (1995-2005*) ¹	3
Health as % of total government expenditure (1995-2005*) ¹	2
Defence as % of total government expenditure (1995-2005*) ¹	14

Health & Nutrition

Infant mortality rate (per 1,000 live births, 1990, 2006) ¹	87	62		
Under 5 mortality rate (per 1,000 live births, 1990, 2006) ¹	123	83		
Maternal mortality ratio (per 100,000 live births, adjusted, 2005) ¹	500			
Skilled attendance at delivery (%, 2000-2006*)	41			
Population using improved drinking water sources (% - total, urban, rural, 2004) ¹	85	94	81	
Population using adequate sanitation facilities (% - total, urban, rural, 2004) ¹	37	63	27	
Children under 1 immunized against BCG, DPT 3, Polio 3, Measles (%, 2006) ¹	82	63	66	65
Adult HIV/AIDS prevalence rate (15-49 years, %, end 2006) ¹¹	<0.5			
Children (<15 years) estimated to be living with HIV as of May 2006 ²⁵ (estimate)	130000			
Estimated deaths in children (<15 years) from AIDS during 2006 ²⁵	23000			
Estimated number of children (<15 years) newly infected with HIV during 2006 ²⁵	35000			
Total fertility rate+ (2006) ¹	3.0			
Underweight moderate and severe (under 5 children, %, 2000-2006*) ¹	42			
Vitamin A supplementation coverage rate (6-59 months, % at least one dose, 2005) ¹	71			
Households consuming iodized salt: (%, 2000-2006*) ¹	51			

Education

Primary school net enrolment ratio (% - male, female, 2000-2006*) ¹		90	84
Primary completion rate as % of relevant age group (total, 2005) ¹⁶	82		
Females as % of males, primary school enrolment (enrolled, attending, 2000-2006*) ¹	92	98	
Females as % of males, secondary school enrolment (enrolled, attending, 2000-2006*) ¹ n.a.		90	
Adult literacy rate (% - total, male, female, 2000-2004*) ¹	58		
Youth (15-24 years) literacy rate (%, male, female, 2000-2006*) ¹		81	65
Primary school entrants reaching grade 5 (%, admin data, 2000-2006*) ¹	72		

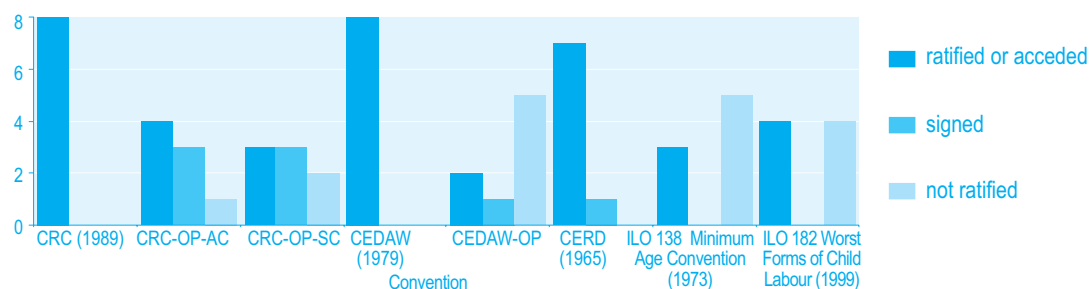
Child Protection

Birth registration (% - total, urban, rural, 1999-2006*) ¹	36	52	30
5-14 years old children who are working (% - total, male, female, 1999-2006*) ¹	13	n.a.	n.a.
Girls married before the age of 18 years (% - total, urban, rural, 1987-2006*) ¹	45	30	53

Figure 1: MDG Performance in South Asia



Figure 2: International, Regional Treaties and Conventions



Notes:

- k Afghanistan, Maldives, and Bhutan not included
- m Afghanistan not included

Source for Graph:

Figure 1: The World Bank Group, Millennium Development Goals in South Asia, website: <http://ddp-ext.worldbank.org/ext/GMIS/gdmis.do?siteId=2&menuId=LNAV01REGSUB5>

Figure 2: UNICEF ROSA, Kathmandu, Nepal

Summary for Selected Indicators

	Afghanistan	Bangladesh	Bhutan	India	Maldives	Nepal	Pakistan	Sri Lanka	South Asia
Population									
Total population (thousands, 2006) ¹	26,088	155,991	635*	1,151,751	299**	27,641	160,943	19,207	1,542,571
Population aged under 18 (thousands, % 2006) ¹	13,982	64,194	272*	445,361	117**	12,487	70,673	5,576	612,647
Population aged under 5 (thousands, % 2006) ¹	4,823	18,951	63*	126,843	32***	3,626	19,012	1,483	174,830
Poverty / Inequality									
HDI (rank out of 177, value, 2004) ¹³	n.a.	140	0.547	128	0.741	142	136	0.551	n.a.
Population below the income poverty line 1 \$ a day (% 1990-2005) ¹³	n.a.	41.3	n.a.	34.3	n.a.	24.1	17	5.6	32
Population below the national poverty line (% 1990-2004) ¹³	n.a.	49.8	n.a.	28.6	n.a.	30.9	32.6	25	n.a.
Health & Nutrition									
Infant mortality rate (per 1,000 live births, 1990, 2006) ¹	168	100	107	63	78	99	100	78	87
Under 5 mortality rate (per 1,000 live births, 1990, 2006) ¹	260	149	166	70	111	142	130	97	123
Maternal mortality ratio (per 100,000 live births, adjusted, 2005) ¹	1,800	570	440	450	120	830	320	58	500
Skilled attendance at delivery (% 2000-2006) ¹	14	20	56	47	84	19	31	96	41
Population using improved drinking water sources (% - total, urban, rural, 2004) ¹	39	63	31	74	82	62	86	95	83
Population using adequate sanitation facilities (% - total, urban, rural, 2004) ¹	34	49	29	39	51	35	70	65	70
Children under 1 immunized against BCG, DPT 3, Polio 3, Measles (% 2006) ¹	90	77	77	68	96	88	88	81	92
Adult HIV/AIDS prevalence rate (15-49 years, % end 2005) ¹	<0.1	<0.1	<0.1	0.36****	n.a.	0.5	0.1	<0.1	<0.5****
Underweight moderate and severe (under 5 children, %, 2000-2006) ¹	39	48	19x	43	30	39	38	29	42
Education									
Primary school net enrolment ratio (% - male, female, 2000-2006) ¹	n.a.	93	80	79	79	90	83	77	59
Primary completion rate as % of relevant age group (total, 2005) ¹⁶	32.3	76.4	n.a.	89.8	127.3	74.7	63.2	n.a.	82
Females as % of males, primary school enrolment (enrolled, attending, 2000-2006) ¹	n.a.	61	103	106	99	91	93	101	92
91	98	99	91	93	101	92	95	77	82

* Population and Housing Census of Bhutan 2005

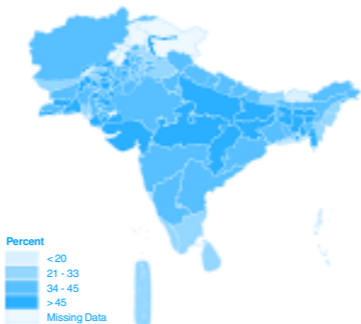
** Statistical Yearbook for 2007, Maldives

*** Maldivelimo

**** end 2006-National Aids Control Organisation, Government of India & UNAIDS

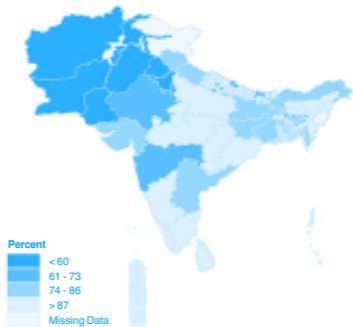
Prevalence of underweight (moderate and severe)

Year: 2000-2006



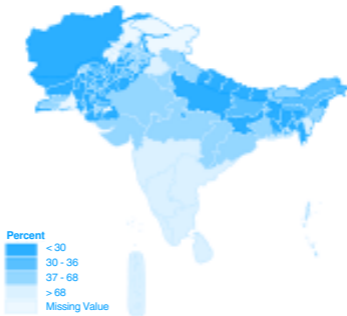
Net enrolment ratio in primary education - Total

Year: 2000-2006



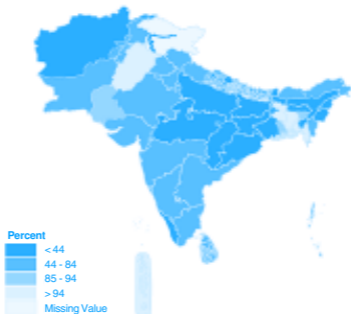
Births attended by skilled health personnel

Year: 2000-2006



Proportion of population using improved drinking water sources

Year: 2001-2006



Source:

1. UNICEF, *The State of The World's Children 2008*, New York
2. United Nations Office on Drugs and Crime, website: http://www.unodc.org/unodc/en/crime_cicp_signatures_convention.html
3. International Campaign to Ban Landmines (ICBL), website: <http://www.icbl.org/treaty/members>
4. Hague Conference On Private International Law, website: http://hcch.evision.nl/index_en.php?act=conventions.status&cid=69#nonmem
5. ILO, ILOLEX database of International Labour Standards, website: <http://www.ilo.org/ilolex/english/newrafframeE.htm>
6. The Asian Development Outlook 2007
7. Most Requested Legislative Materials, website: <http://www.aipowmia.com/legis/>
8. OHCHR, *Status Of Ratifications Of The Principal International Human Rights Treaties*, Web-site: <http://www.unhchr.ch/tbs/doc.nsf>
9. United Nations, Educational, Scientific and cultural Organization, website: http://portal.unesco.org/en/ev.php-URL_ID=13059&URL_DO=DO_TOPIC&URL_SECTION=201.html
10. UN ESCAP, *The Millennium Development Goals: Progress in Asia and the Pacific 2007*
11. UNICEF Regional Office for South Asia
12. UNDESA: *Overcoming economic vulnerability and creating employment*, website: http://www.un.org/esa/policy/devplan/cdp_publications/publications.htm
13. UNDP, *Human Development Report 2007/2008*, New York
14. UNICEF ROSA, *South Asia and the Minimum Age of Criminal Responsibility*, Kathmandu, 2005
15. United Nations, *UNCTAD Handbook of Statistics 2006*, New York and Geneva, 2006
16. World Bank, website: http://ddp-ext.worldbank.org/ext/GMIS/gdmis.do?siteId=2&contentId=Content_goals_by_region&menuId=LNAV01HOME3
17. WTO web site: www.wto.org
18. SAARC Secretariat, Kathmandu, Nepal, As of August 2007 website: <http://www.saarc-sec.org/old/freepubs/conv-trafficking.pdf>
19. SAARC Secretariat, Kathmandu, Nepal, As of August 2007 website: <http://www.saarc-sec.org/old/freepubs/conv-children.pdf>
20. UNCTAD Globstat database
21. United Nations Treaty Collection, website: http://www.unhchr.ch/html/menu3/b/treaty3_.htm
22. United Nations, *Rome Statute of the International Criminal Court*, website: <http://www.icc-cpi.int/asp/statesparties/country&id=41.html>
23. ICRC, *International Humanitarian Law - Treaties & Documents*, website: <http://www.cicr.org/ihl.nsf/CONVPRES?OpenView>
24. National Aids Control Organisation, Government of India & UNAIDS
25. UNAIDS, *Report of the Global AIDS Epidemic 2006*, Geneva, website: www.unaids.org
26. UNICEF Regional Office South Asia, *Juvenile Justice in South Asia, Improving Protection for Children in Conflict with the Law*, Kathmandu, 2006
27. DevInfo
28. UNHCR, *Statistical Yearbook, 2006 (provisional) (table 1)*

29. Population and Housing Census of Bhutan 2005
30. National Accounts & Price Division, Royal Government of Bhutan
31. Statistical Yearbook for 2007, Maldives
32. MaldivelInfo
33. World Bank, <http://web.worldbank.org>
34. UNICEF, *The State of The World's Children 2007*, New York

Notes:

- ^ Value includes workers' remittances and compensation of employees
- # **Early achiever** - Has already met the target; **On track** - Expected to hit the target by 2015; **Slow** - Expected to hit the target after 2015; **Regressing** - Slipping backwards, or stagnating
- + The number of children that would be born per women if she were to live to the end of her childbearing years and bear children at each age in accordance with prevailing age-specific fertility rates.
- ++ Persons recognised as refugees under the 1951 UN Convention/ 1967 Protocol, the 1969 OAU Convention, in accordance with the UNHCR Statute, persons granted a complementary form of protection and those granted temporary protection.
- +++ Persons who are displaced within their country and to whom UNHCR extends protection and / or assistance.
- CFC Chlorofluorocarbons
- * Data refer to the most recent year available during the period specified
- ** According to Huddod Ordinance 1997
- *** With reservations on Article 44 and Article 68 Para 2 on death penalty
- (-) Less than half the unit shown
- a Accession
- acp Acceptance
- b The average age of those children who were killed is 10 years
- c During the reporting period of 1 August 2005 to 30 September 2006. 40 % of them are girls
- d During the reporting period from 1 November 2005 to 31 October 2006
- e Estimated figure
- f Data refer to an earlier year than that specified; from 2000 onwards
- g Data refer to 2003
- k Afghanistan and Bhutan not included
- n National household survey data
- n.a. Not available or not applicable
- n.r. Not ratified
- n.s. Not signed
- r Ratified
- s Signature only
- x Indicates data that refer to years or periods other than those specified, differ from the standard definition, or refer to only part of a country
- y Indicates data that differ from the standard definition or refer to only part of the country, but are included in the regional and global calculations

