

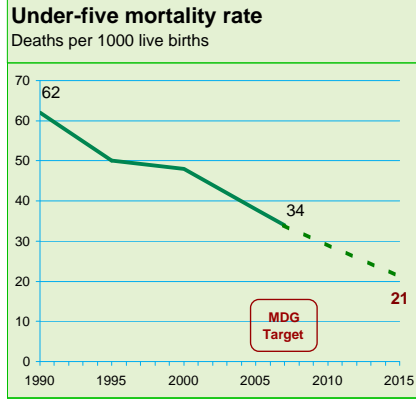
# Vanuatu

## Maternal, Newborn & Child Survival

November 2008

## DEMOGRAPHICS

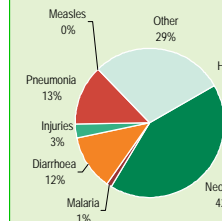
Total population (000)	226 (2007)
Total under-five population (000)	31 (2007)
Births (000)	7 (2007)
Under-five mortality rate (per 1000 live births)	34 (2007)
Infant mortality rate (per 1000 live births)	28 (2007)
Neonatal mortality rate (per 1000 live births)	18 (2004)
Total under-five deaths (000)	0 (2007)
Maternal mortality ratio (per 100,000 live births)	-
Lifetime risk of maternal death (1 in N)	-
Total maternal deaths (number)	-



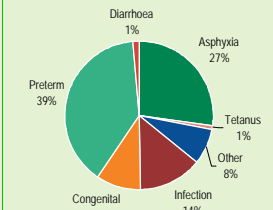
## Causes of under-five deaths

Globally more than one third of child deaths are attributable to undernutrition

### Causes of under-five deaths



### Causes of neonatal deaths



## INTERVENTION COVERAGE FOR MOTHERS, NEWBORNS AND CHILDREN

### NUTRITION 1

Stunting prevalence (based on 2006 WHO reference population, moderate and severe, %)

Stunting prevalence (based on NCHS/WHO reference population, moderate and severe, %)

Wasting prevalence (based on 2006 WHO reference population, moderate and severe, %)

Wasting prevalence (based on NCHS/WHO reference population, moderate and severe, %)

Complementary feeding rate (6-9 months, %)

Low birthweight incidence (%) 6 (2001)

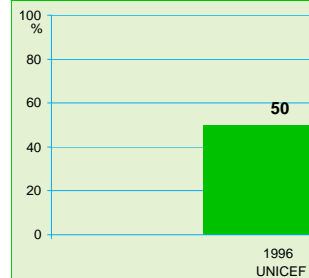
**Underweight prevalence**  
Percent children < 5 years underweight for age  
Based on 2006 WHO reference population

No Data

**Underweight prevalence**  
Percent children < 5 years underweight for age  
Based on NCHS/WHO reference population

No Data

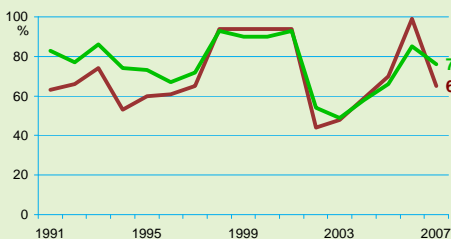
**Exclusive breastfeeding**  
Percent infants <6 months exclusively breastfed



## CHILD HEALTH

### Immunisation

Percent of children immunised against measles  
Percent of children immunised with 3 doses DPT  
Percent of children immunised with 3 doses of Hib



### Malaria prevention

Percent children < 5 years sleeping under ITNs  
*Malaria endemicity is generally not a national problem in Asia*

No Data

### Vitamin A supplementation

Percent children 6-59 months receiving vitamin A doses

No Data

### Diarrhoeal disease treatment

Percent children < 5 years with diarrhoea receiving oral rehydration therapy or increased fluids, with continued feeding

No Data

### Malaria treatment

Percent febrile children < 5 years using anti-malarials  
*Malaria endemicity is generally not a national problem in Asia*

No Data

### Pneumonia treatment

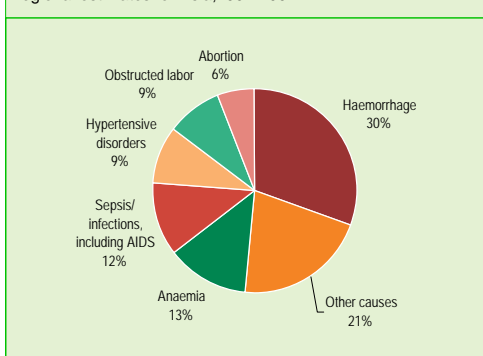
No Data

## MATERNAL AND NEWBORN HEALTH

Proportion of women with low BMI (< 18.5 Kg/m <sup>2</sup> , %)	-	-
Unmet need for family planning (%)	-	-
Total fertility rate	3.8	(2007)
Adolescent birth rate (births per 1000 woman aged 15-19 yr)	47	(2006)
Antenatal visit for woman (4 or more visits, %)	-	-
Early initiation of breastfeeding (within 1 hour of birth, %)	-	-
Institutional deliveries (%)	-	-
Postnatal visit for baby (within 2 days for home births, %)	-	-
Postnatal visit for mother (within 2 days, %)	-	-

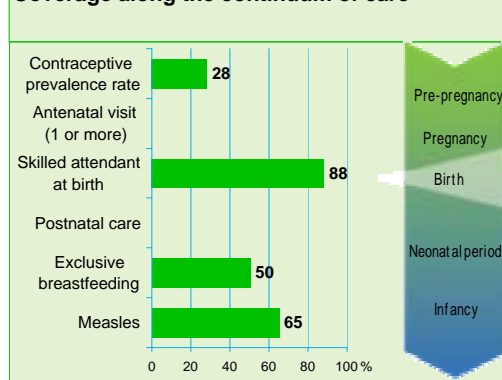
### Causes of maternal deaths

Regional estimates for Asia, 1997-2002



Source: Khan, Khalid S., et al, Lancet 2006;367:1066-74

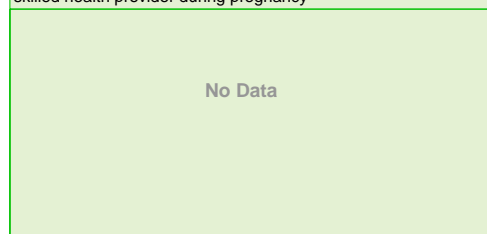
### Coverage along the continuum of care



Source: DHS, MICS, Other NS

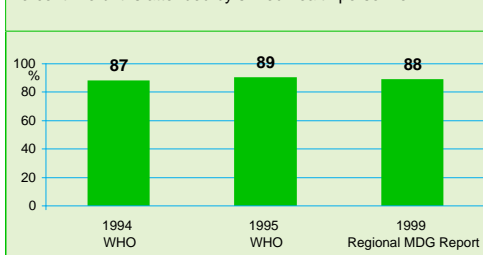
### Antenatal care

Percent women aged 15-49 years attended at least once by a skilled health provider during pregnancy



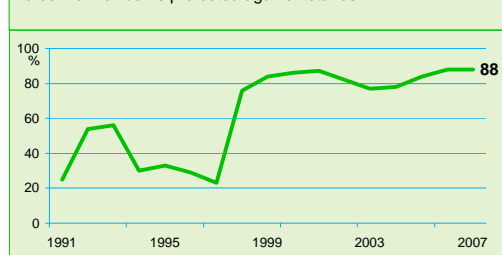
### Skilled attendant at delivery

Percent live births attended by skilled health personnel



### Neonatal tetanus protection

Percent of newborns protected against tetanus



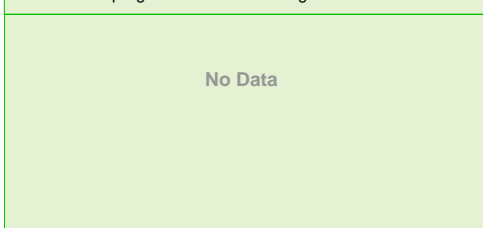
Source: WHO/UNICEF

## HIV AND AIDS

HIV prevalence among young women (15-24 yrs, %)	-	-
HIV prevalence among young men (15-24 yrs, %)	-	-
HIV+ children using ART (number)	-	-
Orphan school attendance ratio	-	-

### Prevention of mother to child transmission of HIV

Percent HIV+ pregnant women receiving ARVs for PMTCT



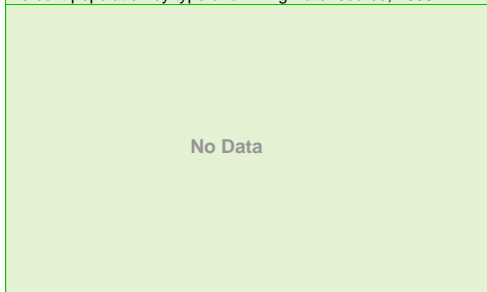
## EDUCATION

Survival rate to last grade of primary school (administrative data)	69	(1999)
Survival rate to last grade of primary school (survey data)	-	-
Primary school net enrolment or attendance ratio (total)	87	(2007)
Primary school net enrolment or attendance ratio (% male)	88	(2007)
Primary school net enrolment or attendance ratio (% female)	86	(2007)

## WATER AND SANITATION

### Drinking water coverage

Percent population by type of drinking water source, 2006



### Sanitation coverage

Percent population by type of sanitation facility, 2006



Source: WHO/UNICEF JMP, 2008

Source: WHO/UNICEF JMP, 2008

## CHILD PROTECTION

Women aged 20-24 years who were married or in union by age 18 (%)	-	-
Birth registration (%)	-	-

## POLICIES

International Code of Marketing of Breastmilk Substitutes	Partial	(2008)
New ORS formula and zinc for management of diarrhoea	No	(2008)
Community treatment of pneumonia with antibiotics	No	(2008)
IMCI adapted to cover newborns 0-1 week of age	No	(2008)
Costed implementation plan(s) for maternal, newborn and child health available	Partial	(2008)
Midwives to be authorised to administer a core set of life saving interventions	Partial	(2008)
Maternity protection in accordance with ILO Convention 183	No	(2008)
Specific notification of maternal deaths	Yes	(2008)

## SYSTEMS

Financial Flows and Human Resources

Per capita total expenditure on health (US\$)	139	(2006)
General government expenditure on health as % of total government expenditure (%)	13	(2005)
Out-of-pocket expenditure as % of total expenditure on health (%)	17	(2005)
Density of health workers (per 1000 population)	1.8	(2004)
Official Development Assistance to child health per child (US\$)	7	(2005)
Official Development Assistance to maternal and neonatal health per live birth (US\$)	4	(2005)
National availability of Emergency Obstetric Care services (%)	-	-

DISPARITIES IN INTERVENTION COVERAGE <sup>2</sup>

Indicator	Total	Gender			Residence			Wealth Quintile					Source	
		Male	Female	Ratio of Male to Female	Urban	Rural	Ratio of Rural to Urban	Poorest	Second	Middle	Fourth	Richest		Ratio of Richest to Poorest
<b>NUTRITION <sup>1</sup></b>														
Low birthweight incidence (%)	6	-	-	-	-	-	-	-	-	-	-	-	-	WHO 2001
Underweight prevalence (based on 2006 WHO reference population, %)	-	-	-	-	-	-	-	-	-	-	-	-	-	-
Underweight prevalence (based on NCHS/WHO reference population, %)	-	-	-	-	-	-	-	-	-	-	-	-	-	-
Stunting prevalence (based on 2006 WHO reference population, %)	-	-	-	-	-	-	-	-	-	-	-	-	-	-
Stunting prevalence (based on NCHS/WHO reference population, %)	-	-	-	-	-	-	-	-	-	-	-	-	-	-
Wasting prevalence (based on 2006 WHO reference population, %)	-	-	-	-	-	-	-	-	-	-	-	-	-	-
Wasting prevalence (based on NCHS/WHO reference population, %)	-	-	-	-	-	-	-	-	-	-	-	-	-	-
Exclusive breastfeeding (0-5 months, %)	50	-	-	-	-	-	-	-	-	-	-	-	-	UNICEF 1996
Complementary feeding (6-9 months, %)	-	-	-	-	-	-	-	-	-	-	-	-	-	-
<b>CHILD HEALTH</b>														
Careseeking for pneumonia (%)	-	-	-	-	-	-	-	-	-	-	-	-	-	-
Antibiotic use for pneumonia (%)	-	-	-	-	-	-	-	-	-	-	-	-	-	-
ORT (ORS or RHF) or increased fluids, with continued feeding (%)	-	-	-	-	-	-	-	-	-	-	-	-	-	-
Children sleeping under ITNs (%)	-	-	-	-	-	-	-	-	-	-	-	-	-	-
Children with fever receiving any anti-malarial medicines (%)	-	-	-	-	-	-	-	-	-	-	-	-	-	-
<b>MATERNAL AND NEWBORN HEALTH</b>														
Proportion of women with low BMI (< 18.5 Kg/m <sup>2</sup> %)	-	-	-	-	-	-	-	-	-	-	-	-	-	-
Antenatal care coverage at least one visit (%)	-	-	-	-	-	-	-	-	-	-	-	-	-	-
Antenatal care coverage (4 or more visits, %)	-	-	-	-	-	-	-	-	-	-	-	-	-	-
Skilled attendant at delivery (%)	88	-	-	-	-	-	-	-	-	-	-	-	-	Regional MDG Report 1999
Early initiation of breastfeeding (%)	-	-	-	-	-	-	-	-	-	-	-	-	-	-
<b>WATER AND SANITATION <sup>3</sup></b>														
Use of improved drinking water sources (%)	-	-	-	-	-	-	-	-	-	-	-	-	-	-
Use of improved sanitation facilities (%)	-	-	-	-	-	-	-	-	-	-	-	-	-	-
<b>EDUCATION</b>														
Survival rate to last grade of primary school (administrative data, %)	69	67	71	0.9	-	-	-	-	-	-	-	-	-	UIS 1999
Survival rate to last grade of primary school (survey data, %)	-	-	-	-	-	-	-	-	-	-	-	-	-	-
Primary school net enrolment or attendance ratio	87	88	86	1.0	-	-	-	-	-	-	-	-	-	UIS 2007
<b>CHILD PROTECTION</b>														
Women aged 20-24 years who were married or in union by age 18 (%)	-	-	-	-	-	-	-	-	-	-	-	-	-	-

**Note:** The format for this Country Profile has been adapted from the Countdown to 2015, 2008 report (UNICEF, 2008). Coverage data have been largely derived from national household surveys such as the Multiple Indicator Cluster Surveys (MICS) and Demographic and Health Surveys (DHS). For the majority of coverage indicators, UNICEF global databases were used. Other organizations such as the World Health Organization, UNAIDS, United Nations Population Fund, London School of Hygiene and Tropical Medicine and Saving Newborn Lives also provided data. Details on indicators, data sources, and definitions of indicators, can be found at [www.childinfo.org](http://www.childinfo.org).

**1. Anthropometric indicators - Reference Standards for Underweight, Stunting and Wasting** New international Child Growth Standards for infants and young children were released by WHO in 2006, replacing the older NCHS/WHO reference population. During this transition period, the Country Profile provides underweight, stunting and wasting data based on both the 2006 WHO reference population and the older NCHS/WHO reference population, where available. In using the 2006 WHO reference population, estimates generally change in the following manner: stunting is greater throughout childhood; underweight rates are higher during the first half of infancy and lower thereafter; and, wasting rates are higher during infancy.

**2. Disparities.** Disparity information is only available for data directly derived from household surveys such as MICS and DHS. Therefore, disparity data are not available for the following indicators: mortality, vitamin A supplementation, immunization, and for HIV/AIDS. In addition, neither UNICEF Global Databases nor databases from partner organizations maintain disparity data for the following indicators: total fertility rate, unmet need, institutional deliveries, contraceptive prevalence, adolescent birth rate.

**3. Water and sanitation wealth quintile data** are derived from a MICS or DHS survey from 2005 or 2006. Urban, rural and total coverage estimates provided are for 2006 and are those published by the WHO/UNICEF Joint Monitoring Program for Water Supply and Sanitation.