

Albania



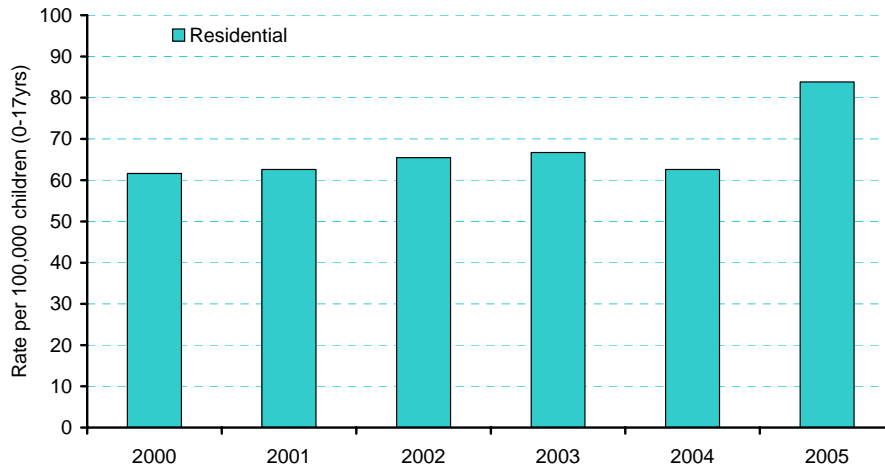
Total Population (2005)	3,135,000
Child Population, 0 – 17 (2005)	1,021,000
Children as proportion of Total Population	33%

Poverty Rate, \$PPP 2.15/day ¹ (2002)	24%
Child Poverty rate (<16 yrs), \$PPP 2.15/day ² (2002)	30%

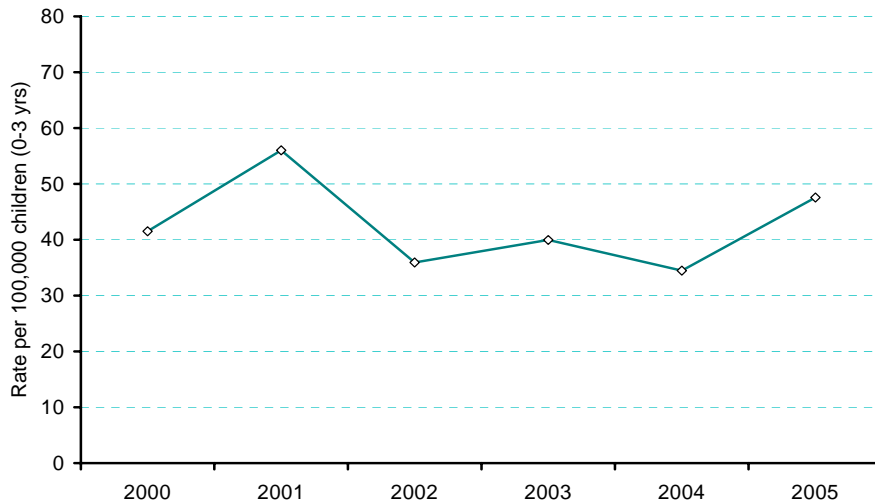
	2000	2001	2002	2003	2004	2005
Children in Residential Care (Absolute Number) ³	671	675	695	694	639	835
Infants (0 – 3 yrs) as proportion of total number of Children in Residential Care	25%	25%	22%	23%	19%	15%
Adoption (Absolute Number) ⁴	99	119	75	82	69	91

*Data on Children in guardianship and/or Foster care not available.

Rate of Children in Residential Care



Adoption Rate



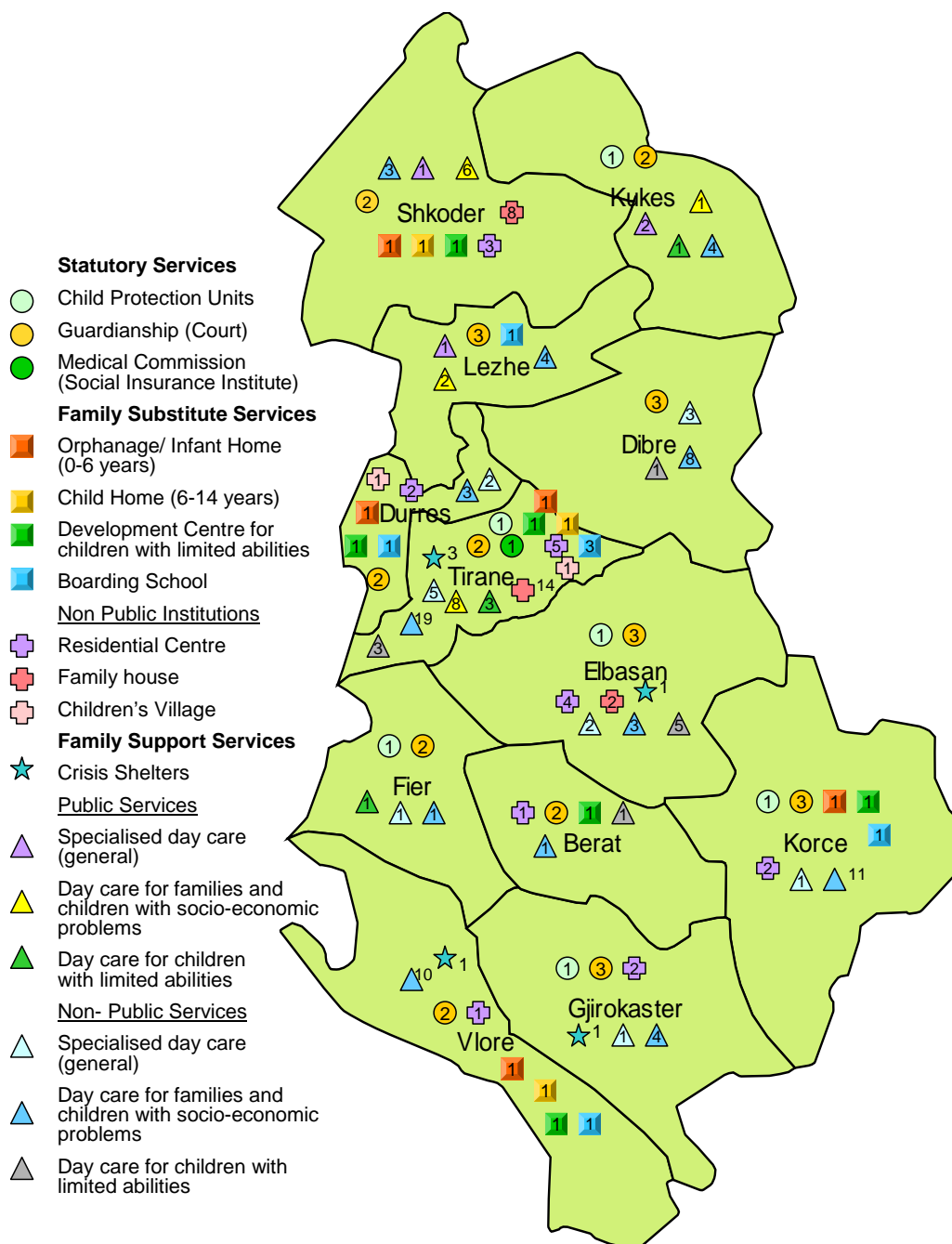
¹ World Bank, "Growth, Poverty and Inequality: Eastern Europe and the Former Soviet Union", 2005

² Ibid

³ Data for 2005 include children in non-public residential care

⁴ Including adoptions within the family

Child Care Services in Albania⁵



Definitions

Boarding schools: (fully state funded) at which the children receive board and lodging during the school term and sleep most nights at the school.

Crisis Shelters: Shelters and structures for children and families with socio-economic problems, including street children, victims of violence, abuse, trafficking.

Specialised day care: Refers ONLY to day care that is part of child protection services, such as day care for children and families with socio-economic problems and children with special needs. **General** refers to day care providing both types of services.

⁵ Data Collected by UNICEF Country Offices