

All data are from the National Statistical Committee and the Ministry of Education of Belarus

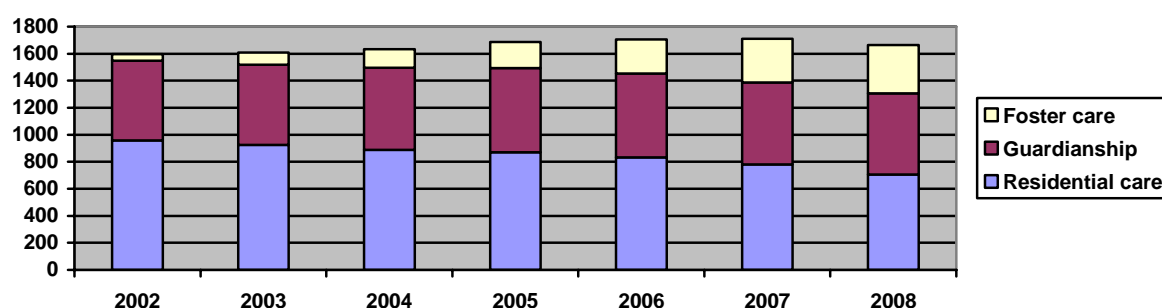
## REPUBLIC OF BELARUS



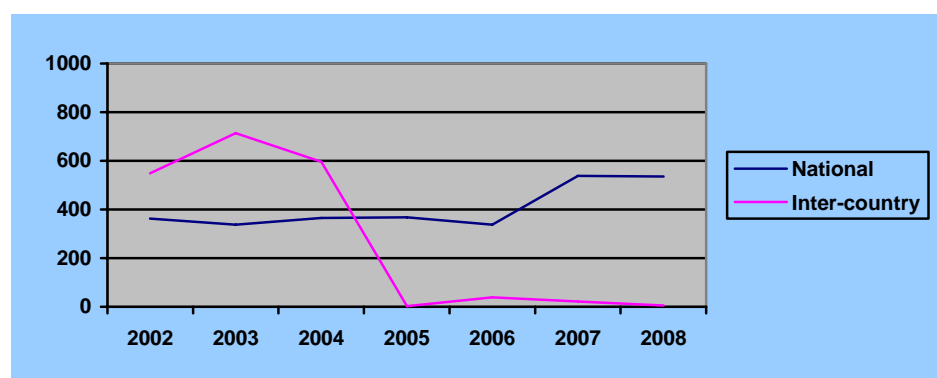
<b>Total population (2009)</b>	<b>9 671 912</b>
<b>Child population, 0-17 years (2009)</b>	<b>1 785 387</b>
<b>Children as proportion of total population</b>	<b>19%</b>
<b>Poverty rate, \$PPP 4/day, 2009</b>	<b>0.4%</b>
<b>Child poverty rate, \$PPP 4/day, 2009</b>	<b>0.8%</b>

	2002	2003	2004	2005	2006	2007	2008
<b>Children in all types of residential care, absolute number</b>	20803	19368	17853	16855	15559	14204	12624
<b>Infants below 4 in residential care, absolute number</b>	1688	1621	1617	1707	1707	1551	1535
<b>Children in guardianship families, absolute number</b>	12802	12423	12184	12026	11577	11038	10687
<b>Children in foster families, absolute number</b>	1087	1906	2768	3731	4733	5845	6414
<b>Adoption, absolute number</b>	912	1051	961	370	376	561	541
<b>Proportion of children placed in alternative family based care to residential care</b>	42 :58%	44:56%	47:53%	49:51%	52:48%	55:45%	58:42%

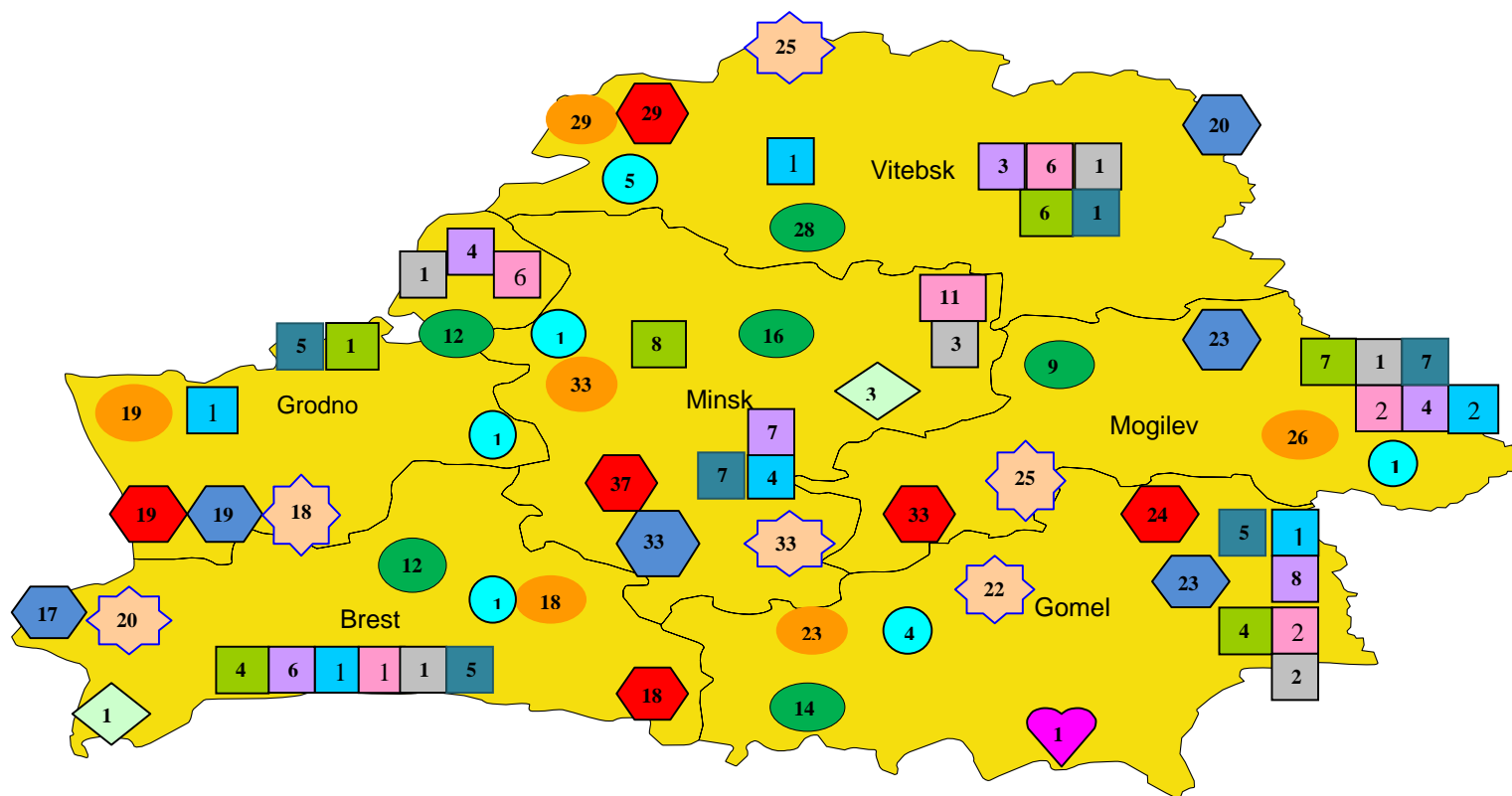
Rate of children in formal care by type (per 100 000 children)



Absolute number of adoptions



## Child care services in the Republic of Belarus



### Statutory services:

- Child Protection Units with Education Departments
- Commissions on Minors
- Medical Rehabilitation Expert Commissions

### Residential institutions:

- Infant Home 0-3
- Boarding school for child. without parental care
- Home for children without parental care
- Institution for children with disabilities
- Boarding school for children with mental disability
- Boarding school for different categories

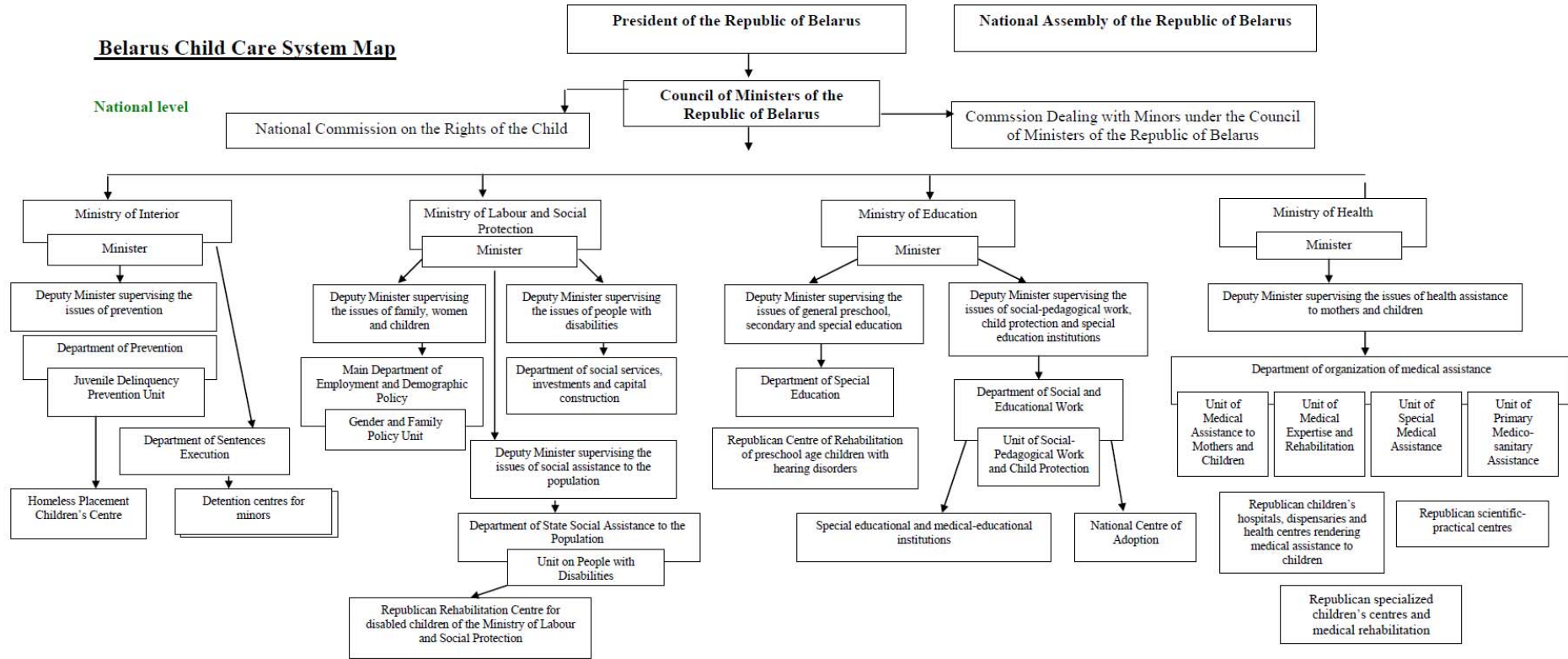
- ◇ Children's Villages

### Family support services:

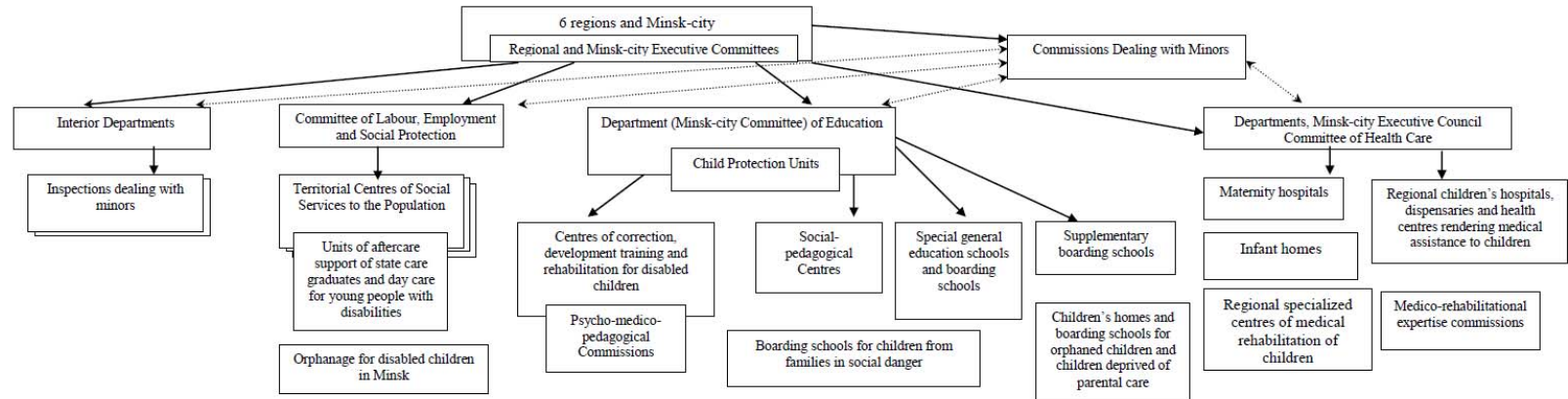
- ⬡ Territorial Social Service Centres
- ⬡ Correction, Development & Training Centres for disabled children
- ⬡ Social Pedagogical Establishments
- ♥ Day Care Centre for children with disabilities

# Belarus Child Care System Map

## National level



## Regional Level



District level

