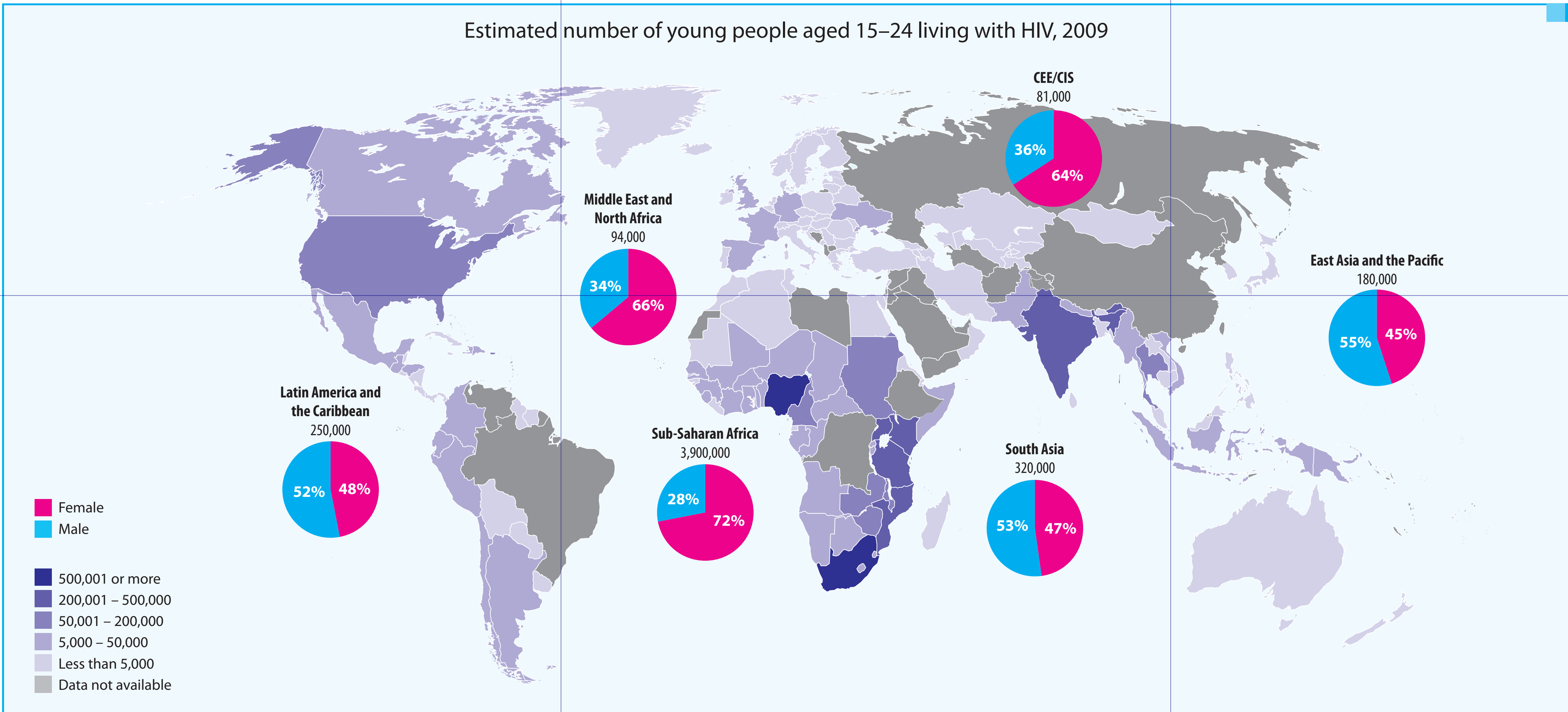


A GLOBAL VIEW of HIV INFECTIONS in ADOLESCENTS and YOUNG PEOPLE

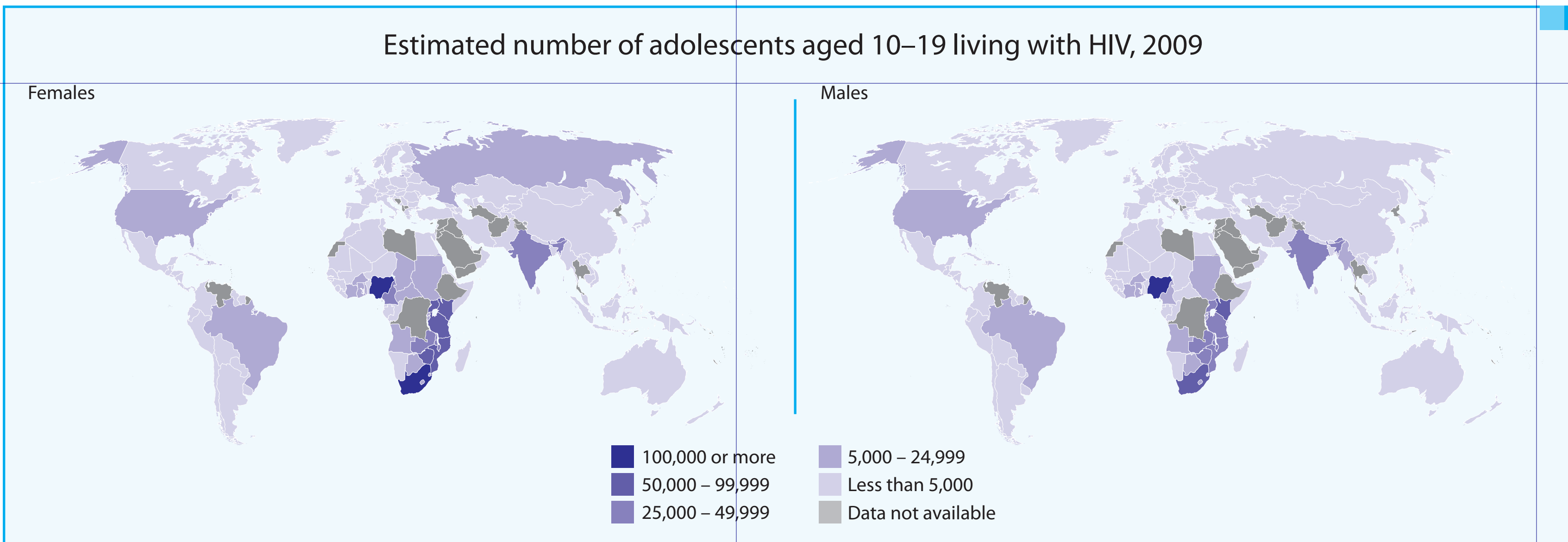
5 million [4.3 million–5.9 million] young people aged 15–24 living with HIV;
890,000 [810,000–970,000] new infections among young people aged 15–24 in 2009

Estimated number of young people aged 15–24 living with HIV, 2009



2 million [1.8 million–2.4 million] adolescents aged 10–19 living with HIV in 2009

Estimated number of adolescents aged 10–19 living with HIV, 2009



Twenty countries with the largest numbers of adolescents aged 10–19 living with HIV, 2009

Country	Female	Low-high estimate	Male	Low-high estimate
South Africa	210,000	[190,000 – 230,000]	82,000	[74,000 – 92,000]
Nigeria	180,000	[150,000 – 250,000]	100,000	[76,000 – 130,000]
Kenya	82,000	[61,000 – 110,000]	54,000	[39,000 – 71,000]
Uganda	78,000	[63,000 – 100,000]	49,000	[38,000 – 61,000]
United Republic of Tanzania	76,000	[61,000 – 100,000]	47,000	[36,000 – 61,000]
Mozambique	63,000	[51,000 – 88,000]	26,000	[20,000 – 36,000]
Zimbabwe	60,000	[47,000 – 82,000]	44,000	[34,000 – 60,000]
Malawi	49,000	[38,000 – 66,000]	32,000	[24,000 – 43,000]
Zambia	49,000	[40,000 – 66,000]	31,000	[24,000 – 41,000]
India	46,000	[41,000 – 53,000]	49,000	[43,000 – 56,000]
Cameroon	29,000	[23,000 – 40,000]	14,000	[11,000 – 19,000]
Côte d'Ivoire	20,000	[13,000 – 29,000]	15,000	[10,000 – 24,000]
Sudan	19,000	[14,000 – 28,000]	6,700	[4,900 – 9,900]
Lesotho	13,000	[11,000 – 18,000]	6,800	[5,100 – 9,300]
Ghana	12,000	[9,100 – 17,000]	6,800	[4,900 – 9,600]
Angola	11,000	[8,000 – 15,000]	5,400	[3,800 – 7,500]
United States	11,000	[6,500 – 21,000]	17,000	[9,700 – 31,000]
Burundi	10,000	[8,100 – 14,000]	7,300	[5,800 – 9,200]
Chad	9,400	[6,400 – 20,000]	4,700	[3,200 – 9,600]
Botswana	9,200	[7,100 – 12,000]	5,400	[3,800 – 7,600]

Estimated number of young people aged 15–24 living with HIV, 2009

Country	Female	Low-high estimate	Male	Low-high estimate
Angola	29,000	[21,000 – 40,000]	12,000	[8,200 – 16,000]
Botswana	26,000	[20,000 – 35,000]	12,000	[8,300 – 16,000]
Burundi	20,000	[15,000 – 26,000]	9,200	[7,300 – 12,000]
Comoros	<100	[<100 – <100]	<100	[<100 – <100]
Eritrea	2,100	[1,200 – 3,600]	<1,000	[<1,000 – 1,500]
Ethiopia	160,000	[120,000 – 220,000]	73,000	[54,000 – 97,000]
Kenya	1,800	[<1,000 – 2,800]	2,700	[1,200 – 7,600]
Madagascar	100,000	[81,000 – 140,000]	48,000	[36,000 – 64,000]
Mauritius	<500	[<200 – <500]	<500	[<200 – <500]
Mozambique	200,000	[160,000 – 280,000]	71,000	[55,000 – 100,000]
Namibia	14,000	[8,700 – 20,000]	5,300	[3,100 – 8,600]
Rwanda	17,000	[12,000 – 21,000]	11,000	[7,400 – 13,000]
Seychelles	5,500	[3,800 – 9,200]	3,600	[2,400 – 6,000]
Somalia	700,000	[630,000 – 770,000]	230,000	[210,000 – 260,000]
South Africa	23,000	[18,000 – 31,000]	9,500	[7,100 – 13,000]
Swaziland	170,000	[140,000 – 220,000]	99,000	[61,000 – 98,000]
Uganda	170,000	[140,000 – 230,000]	76,000	[58,000 – 99,000]
United Republic of Tanzania	120,000	[94,000 – 160,000]	55,000	[42,000 – 72,000]
Zambia	110,000	[86,000 – 150,000]	52,000	[40,000 – 71,000]
Zimbabwe	6,500	[4,600 – 9,200]	2,700	[1,800 – 4,000]
Berlin	12,000	[8,300 – 17,000]	6,900	[5,100 – 9,400]
Burkina Faso	79,000	[63,000 – 110,000]	32,000	[24,000 – 43,000]
Cameroon	2,100	[<1,000 – 3,500]	3,000	[1,100 – 9,100]
Cape Verde	10,000	[6,200 – 14,000]	4,400	[2,700 – 6,100]
Central African Republic	27,000	[19,000 – 57,000]	11,000	[7,400 – 22,000]
Congo	10,000	[8,100 – 14,000]	4,800	[3,700 – 6,300]
Côte d'Ivoire	33,000	[23,000 – 49,000]	16,000	[10,000 – 24,000]
Democratic Republic of the Congo	3,600	[1,900 – 5,700]	1,400	[<1,000 – 2,300]
Equatorial Guinea	5,400	[3,200 – 8,000]	2,200	[1,300 – 3,200]
Gabon	3,600	[2,100 – 6,200]	1,500	[<1,000 – 2,500]
Ghana	30,000	[23,000 – 42,000]	13,000	[8,900 – 18,000]
Guinea	9,400	[6,100 – 13,000]	4,200	[2,700 – 6,200]
Guinea-Bissau	3,000	[2,200 – 4,300]	1,200	[<1,000 – 1,700]
Liberia	2,700	[<1,000 – 5,000]	1,100	[<500 – 2,100]
Mali	6,500	[2,800 – 12,000]	2,800	[1,200 – 5,300]
Mauritania	<1,000	[<500 – 1,500]	1,500	[<1,000 – 4,500]
Niger	6,700	[6,500 – 6,800]	3,000	[3,000 – 3,100]
Nigeria	440,000	[360,000 – 600,000]	190,000	[140,000 – 250,000]
Sao Tome and Principe	8,700	[6,500 – 12,000]	3,400	[2,400 – 4,800]
Senegal	7,600	[4,700 – 13,000]	2,800	[1,700 – 4,900]
Sierra Leone	15,000	[11,000 – 21,000]	6,100	[4,200 – 8,500]
Togo	1,400	[<1,000 – 2,600]	2,200	[<1,000 – 6,500]
Algeria	1,800	[<1,000 – 2,700]	<1,000	[<500 – 1,200]
Egypt	<1,000	[<1,000 – 1,500]	1,600	[1,000 – 2,400]
Iran (Islamic Republic of)	1,700	[1,200 – 2,500]	2,300	[1,500 – 2,800]
Jordan	<1,000	[<1,000 – 1,500]	1,500	[<1,000 – 4,500]
Kuwait	<200	[<200 – <500]	<500	[<200 – <500]
Lebanon	<200	[<200 – <500]	<500	[<200 – <500]
Libyan Arab Jamahiriya	2,000	[<1,000 – 3,500]	2,900	[1,100 – 9,900]
Morocco	<100	[<100 – <200]	<200	[<200 – <200]
Qatar	<100	[<100 – <100]	<100	[<100 – <100]
Saudi Arabia	54,000	[39,000 – 78,000]	22,000	[16,000 – 32,000]
Sudan	<500	[<100 – <500]	<500	[<200 – <1,000]
Syrian Arab Republic	<1,000	[<1,000 – 1,500]	1,600	[1,000 – 2,400]
Tunisia	<1,000	[<1,000 – 1,500]	1,600	[1,000 – 2,400]
United Arab Emirates	<1,000	[<1,000 – 1,500]	1,600	[1,000 – 2,400]
Yemen	<1,000	[<1,000 – 1,500]	1,600	[1,000 – 2,400]
Afghanistan	<1,000	[<500 – 1,100]	1,000	[<500 – 2,900]
Bangladesh	<100	[<100 – <100]	<100	[<100 – <100]
Bhutan	140,000	[120,000 – 160,000]	150,000	[130,000 – 180,000]
India	<100	[<100 – <100]	<100	[<100 – <100]
Maldives	3,900	[1,900 – 6,400]	5,500	[2,400 – 16,000]
Nepal	7,200	[3,300 – 12,000]	12,000	[4,800 – 36,000]
Pakistan	<200	[<200 – <500]	<500	[<500 – <1,000]
Sri Lanka	<1,000	[<500 – 1,100]	1,000	[<500 – 2,900]
Brunei Darussalam	2,200	[<1,000 – 5,200]	1,400	[<1,000 – 2,900]
Cambodia	<1,000	[<1,000 – 1,500]	1,600	[1,000 – 2,400]
China	<1,000	[<1,000 – 1,500]	1,600	[1,000 – 2,400]
Cook Islands	<1,000	[<1,000 – 1,500]	1,600	[1,000 – 2,400]
Democratic People's Republic of Korea	<100	[<100 – <100]	<100	[<100 – <100]
Fiji	9,800	[5,700 – 17,000]	13,000	[7,800 – 21,000]
Indonesia	1,300	[<1,000 – 2,200]	1,000	[<1,000 – 1,600]
Kiribati	<1,000	[<1,000 – 1,500]	1,600	[1,000 – 2,400]
Laos People's Democratic Republic	<1,000	[<1,000 – 1,500]	1,600	[1,000 – 2,400]
Malaysia	<1,000	[<1,000 – 1,500]	1,600	[1,000 – 2,400]
Marshall Islands	<1,000	[<1,000 – 1,500]	1,600	[1,000 – 2,400]
Micronesia (Federated States of)	<100	[<100 – <100]	<100	[<100 – <100]
Mongolia	15,000	[13,000 – 18,000]	18,000	[15,000 – 21,000]
Myanmar	<1,000	[<1,000 – 1,500]	1,600	[1,000 – 2,400]
Nauru	<1,000	[<1,000 – 1,500]	1,600	[1,000 – 2,400]
Niue	<1,000	[<1,000 – 1,500]	1,600	[1,000 – 2,400]
Palau	5,000	[3,600 – 7,200]	2,000	[1,300 – 2,900]
Papua New Guinea	<1,000	[<500 – 1,700]	1,400	[<500 – 4,100]
Philippines	<1,000	[<500 – 1,700]	1,400	[<500 – 4,100]
Republic of Korea	<1,000	[<500 – 1,700]	1,400	[<500 – 4,100]
Samoa	<200	[<200 – <500]	<200	[<100 – <1,000]
Singapore	<1,000	[<1,000 – 1,500]	1,600	[1,000 – 2,400]
Solomon Islands	<1,000	[<1,000 – 1,500]	1,600	[1,000 – 2,400]
Thailand	30,000	[22,000 – 38,000]	24,000	[19,000 – 29,000]
Timor-Leste	<1,000	[<500 – 1,900]	<500	[<200 – <1,000]
Tonga	<500	[<200 – <500]	<200	[<200 – <500]
Tuvalu	<1,000	[<500 – 1,900]	<500	[<200 – <1,000]
Vanuatu	<1,000	[<500 – 1,900]	<500	[<200 – <1,000]
Viet Nam	5,900	[3,900 – 8,800]	7,500	[5,300 – 11,000]
Antigua and Barbuda	5,900	[2,600 – 10,000]	9,000	[3,400 – 29,000]
Argentina	<1,000	[<500 – 1,900]	<500	[<200 – <1,000]
Bahamas	<500	[<200 – <500]	<200	[<200 – <500]
Barbados	<1,000	[<500 – 1,900]	<500	[<200 – <1,000]
Belize	<1,000	[<500 – 1,900]	<500	[<200 – <1,000]
Bolivia (Plurinational State of)	<1,000	[<500 – 1,900]	<500	[<200 – <1,000]
Brazil	2,100	[1,000 – 3,700]	3,200	[1,300 – 10,000]
Chile	6,000	[2,600 – 10,000]	9,000	[3,200 – 30,000]
Colombia	<1,000	[<500 – 1,900]	<1,000	[<1,000 – 1,200]
Costa Rica	<1,000	[<500 – 1,900]	<1,000	[<1,000 – 1,200]
Cuba	<1,000	[<500 – 1,900]	<1,000	[<1,000 – 1,200]
Dominica	6,200	[3,600 – 8,900]	2,600	[1,400 – 3,800]
Dominican Republic	2,200	[1,000 – 3,700]	3,400	[1,400 – 11,000]
Ecuador	2,100	[1,000 – 3,700]	2,600	[1,000 – 8,800]
El Salvador	4,800	[2,300 – 8,400]	6,700	[2,700 – 21,000]
Grenada	<1,000	[<500 – 1,900]	<500	[<200 – <1,000]
Guatemala	14,000	[10,000 – 20,000]	17,000	[13,000 – 25,000]
Guayana	<1,000	[<500 – 1,900]	<500	[<100 – <1,000]
Haiti	14,000	[11,000 – 20,000]	6,200	[4,600 – 8,300]
Honduras	2,100	[<1,000 – 3,500]	3,000	[1,100 – 9,100]
Jamaica	1,900	[<1,000 – 3,900]	2,700	[1,000 – 8,500]
Mexico	3,000	[2,300 – 4,200]	3,800	[2,900 – 4,600]
Nicaragua	<1,000	[<500 – 1,900]	<500	[<100 – <1,000]
Panama	<1,000	[<500 – 1,900]	<500	[<100 – <1,000]
Paraguay	<1,000	[<500 – 1,900]	<500	[<100 – <1,000]
Peru	3,400	[2,200 – 5,100]	6,100	[3,900 – 9,000]
Saint Kitts and Nevis	<1,000	[<500 – 1,900]	<500	[<100 – <1,000]
Saint Lucia	<1,000	[<500 – 1,900]	<500	[<100 – <1,000]
Saint Vincent and the Grenadines	<1,000	[<500 – 1,900]	<500	[<100 – <1,000]
Suriname	<200	[<100 – <500]	<500	[<100 – <1,000]
Trinidad and Tobago	<1,000	[<500 – 1,900]	<500	[<100 – <1,000]
Uruguay	<1,000	[<500 – 1,900]	<1,000	[<500 – <2,600]
Venezuela (Bolivarian Republic of)	<1,000	[<500 – 1,900]	<1,000	[<500 – <2,600]
Albania	<100	[<100 – <100]	<100	[<100 – <100]
Armenia	<100	[<100 – <100]	<100	[<100 – <100]
Azerbaijan	<1,000	[<500 – 1,900]	<500	[<200 – <500]
Belarus	<1,000	[<500 – 1,900]	<500	[<200 – <500]
Bosnia and Herzegovina	<100	[<100 – <100]	<100	